

12/2011 PiquÃ© cropped jacket

By: burda style magazine

<http://www.burdastyle.com/projects/122011-piqu%C3%A9-cropped>



Piqu cropped jacket burda style magazine patterns FAQ

Materials

Piqu

Step 1 — Preparation



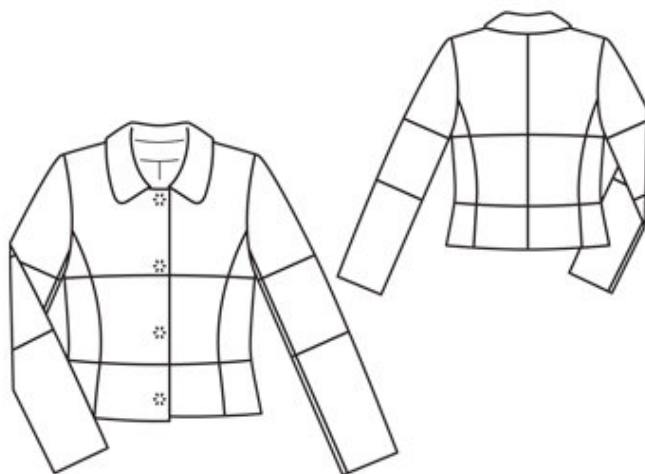
Paper cut for ANSI A (German DIN A4) prints:

This pattern is printed on 8.5 × 11 sheets of plain paper. Do not scale or center pages before printing. Wait until all sheets are printed out before beginning to tape them together. **Do not cut out pattern pieces yet**— Arrange the sheets on a large, hard, flat surface so that they fit together, matching up like numbers and letters (i.e. 6A to 6A). To tape pattern together, fold under the margin of one piece (6A) and tape right against the line of it's matching number/letter (6A).

burda style magazine pattern do not have seam allowance included.

Seam and hem allowances to be added: Seams and edges 1.5 cm (5/8 in).

Step 2 — Cutting out



Piqu:

- 1 upper front 2x
- 2 middle front 2x
- 3 lower front 2x
- 4 upper back, cut apart, each 2x
- 5 lower back 2x
- 6 upper side piece,
- cut apart each 2x
- 7 lower side piece 2x
- 8 upper sleeve piece 2x
- 9 centre sleeve piece 2x
- 10 lower sleeve piece 2x
- 11 collar, on a fold 2x
- 12 back facing, on a fold 1x

Lining: pieces 1, 2 and 3 minus width of facing; piece 4 minus width of facing and with an ease pleat of approx. 2 cm (3/4 in) at centre back; piece 5 with an ease pleat of approx. 2 cm (3/4 in) at centre back; pieces 6 to 10.

Interfacing: See pattern layout. Also interface hem allowances.

Step 3 — Front

Stitch upper front pieces to middle front pieces and middle front pieces to lower front pieces. Stitch horizontal seams on back and side units. Press seam allowances open. Stitch centre back seam. Stitch side pieces to fronts and to back. Stitch shoulder seams.

Step 4 — Collar and neck edge

Turn front self-facings to outside and stitch to back facing. Stitch facing to neck edge, from front edge (fold) to marking (seam number 9). Leave facing lying right sides together with jacket for now. Stitch collar pieces together along outer edge, building a little extra fullness into top collar and beginning and ending stitching on front, exactly at seam line. Turn collar right side out. Lay collar between jacket and facing. Stitch under collar to neck edge and stitch top collar to facing. Press seam allowances open. Turn facing to inside. Pin collar joining seams together exactly. Turn back facing up and stitch seam allowances together, close to collar joining seam. Turn facing down. To make the collar stand well, stitch in back, 1.5 cm (5/8 in) above collar joining seam, beginning and ending 2 cm (3/4 in) before shoulder seams.

Step 5 — Facings

Unfold facings at hem. Press hem allowance to inside but do not yet sew in place. Turn facings to inside again.

Step 6 — Sleeves

Stitch horizontal seams on sleeves. Stitch front sleeve seams. Press sleeve hem allowances to inside and sew in place by hand.

Step 7 — Sleeve caps

Set in sleeves, easing sleeve caps.

Step 8 — Construct lining

Stitch horizontal seams on lining pieces. On back lining pieces, stitch allowances of centre seam together, 1 cm (3/8 in) from edge. For the ease pleat, stitch along centre back at top and bottom, each approx. 5 cm (2 ins) long, and baste in between. Press pleat to one side. Stitch remaining seams of lining. Set in sleeve linings.

Step 9 — Sew lining in jacket, hem jacket

Stitch lining to inside facing edges, first turning hem allowance of facings down. Lay lining inside jacket, with wrong sides together, pulling linings into sleeves. Turn hem allowance to inside and sew in place by hand. Turn in lining along lower edge of jacket. Press fold edge lightly, push upward in a shallow curve, and pin to hem allowance. Sew facings and lining in place. Lay extra length of lining down and press lightly. Above each sleeve hem, pin a fold, approx. 1 cm (3/8 in) deep, in lining. Turn in sleeve linings and sew to hem allowance. Lay extra length down and press lightly.

Step 10 — Snap fasteners

Cover snap fastener pieces with lining fabric. Sew top halves of snap fasteners to right front facing as marked, taking even stitches and exiting needle on outer side. Sew bottom halves of snaps to left front to match.

BurdaStyle

12/2011 PiquÃ© cropped jacket