

# Alberta Ferretti Dress 04/2012

By: burda style magazine

<http://www.burdastyle.com/projects/alberta-ferretti-dress-042012>

---



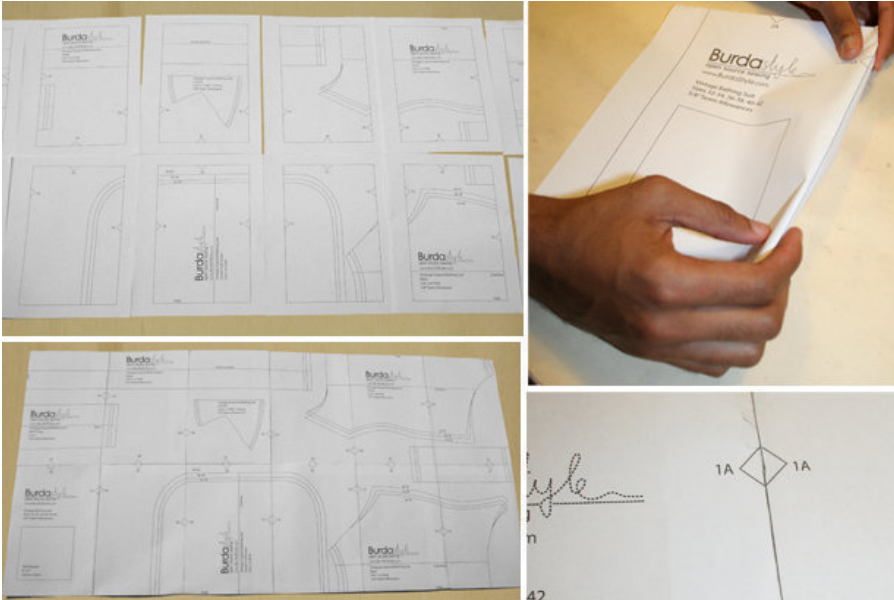
This exclusive dress was designed by renowned fashion designer Alberta Ferretti and is now available for all of us to recreate. This classic Alberta Ferretti dress features all her signature details from the draping at the shoulder, to the layering of the skirt and decorative waist embellishment. Now you can make your own designer dress, perfect for a fancy evening or cocktail party.

## Materials

Burda sizes 36, 38, 40, 42, 44 Back length from waist Overdress 63 cm (24 3/4 ins), Underdress 62 cm (24 1/2 ins)

---

## Step 1 — Preparation



This pattern is printed on 8.5 × 11 sheets of plain paper. Do not scale or center pages before printing. Wait until all sheets are printed out before beginning to tape them together. **Do not cut out pattern pieces yet**— Arrange the sheets on a large, hard, flat surface so that they fit together, matching up like numbers and letters (i.e. 6A to 6A). To tape pattern together, fold under the margin of one piece (6A) and tape right against the line of it's matching number/letter (6A).

Trace the pattern pieces from the pattern sheet following the lines and markings for the correct size. Lengthen piece 3 as indicated. Glue pieces 6 and 6a together on the joining lines.

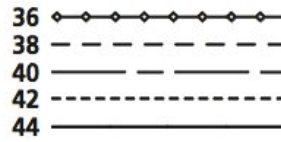
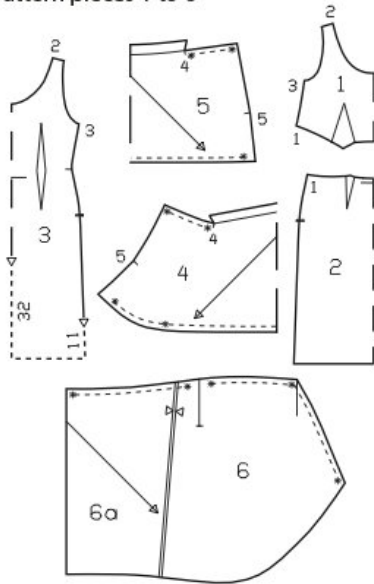
**burda style magazine pattern do not have seam allowance included.**

Seam and hem allowances to be added: Seams and edges of overdress 1 cm (3/8 in) and of underdress 1.5 cm (5/8 in); hem of underdress 4 cm (15/8 ins).

---

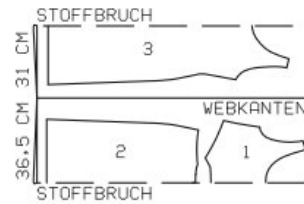
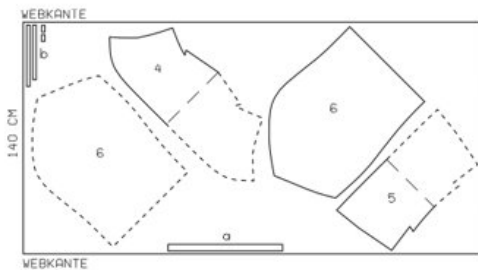
## Step 2 — Cutting Out

Pattern pieces 1 to 6



Chiffon, (single layer of fabric), width 140 cm

Satin, (double layer of fabric)  
Width: 135 cm



Webkante = Selvage, Stoffbruch = Fabric fold

Note: The overdress and underdress for this style are each first sewn separately and then sewn together at the shoulder seams and at the waist seam at centre front. The illustration (at right) shows the overdress and underdress each separately for a better understanding of the sewing instructions.

Underdress

Satin:

- 1 front, on a fold 1x
- 2 front skirt panel, on a fold 1x
- 3 back, on a fold 1x

Overdress

Chiffon:

- 4 front, on a fold 1x
- 5 back, on a fold 1x
- 6 skirt panel 2x

Draft the following pieces not included in the pattern.

a) binding strip for side fastening, 70 cm (27<sup>3</sup>/<sub>4</sub> ins) long, 4 cm (1<sup>5</sup>/<sub>8</sub> ins) wide (incl. allowances),

b) backing strips

lower front edge, width: 2 cm (3/4 in)

length: 39 41 43 45 47 cm (15 1/2 16 1/4 17 17 3/4 18 1/2 ins)

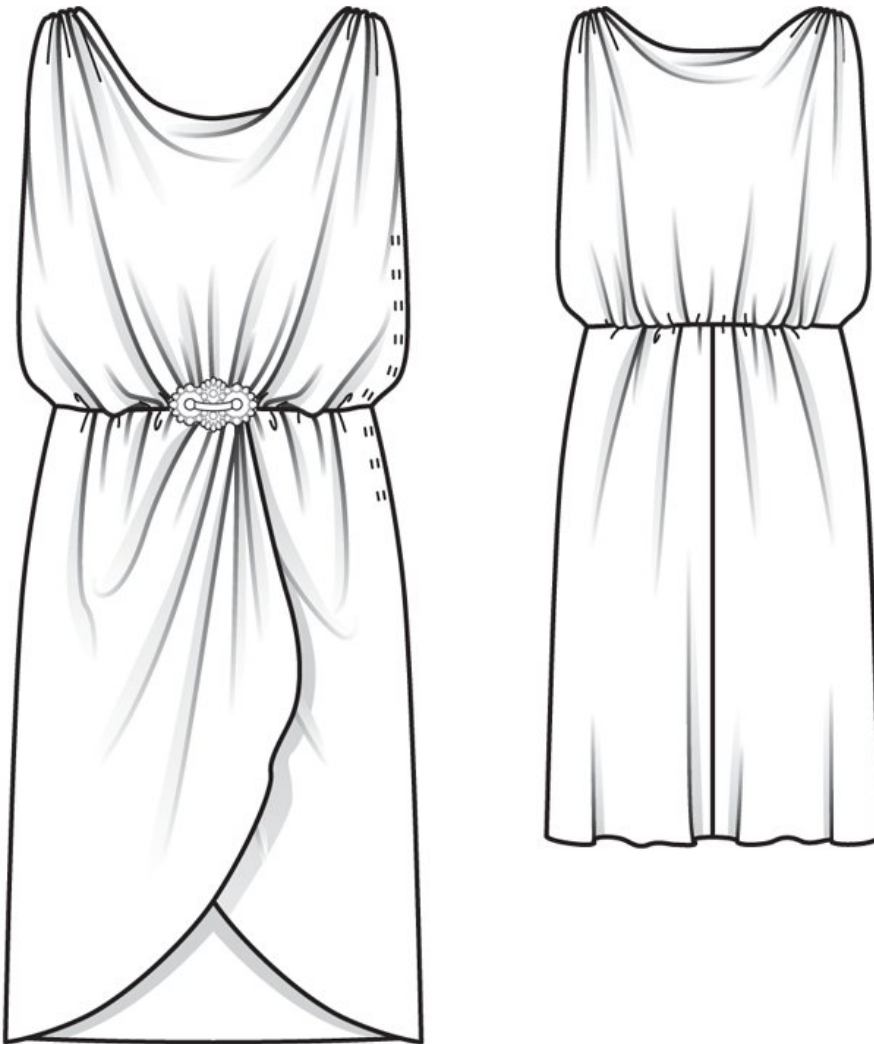
lower back edge, width: 2 cm (3/4 in)

length: 35 37 39 41 43 cm (13 3/4 14 1/2 15 1/2 16 1/4 17 ins)

shoulder seam edges 2 cm (3/4 in) wide x 5 cm (2 ins) long (incl. allowances).

---

### Step 3 — Sewing



**Underdress**

Stitch all darts. Trim allowances of wide front darts to 1 cm (3/8 in) wide and neaten. Press the darts toward the centre. Stitch the front skirt panel to the front (seam number 1). Press the seam allowances down. Stitch the shoulder seams and the right side seam. Press the seam allowances open.

Finish neck and armhole edges with closely spaced zigzag stitching: Press allowance to wrong fabric side. Work from right side to stitch along fold edge with short, closely spaced zigzag stitching. On inside, carefully trim allowance close to stitching.

Sew the invisible zipper to the left opening edges. Begin at the armhole edge and leave the zipper tapes extending at the top. Stitch the left side seam from the lower edge to the zipper. Turn under top ends of the zipper tapes and sew to the edge of the armhole, with the seam allowances.

Press the hem allowance to the inside. Sew hem by hand.

### **Overdress**

On the skirt, sew the centre back seam as a French seam (double seam), as follows: First lay the fabric pieces wrong sides facing and stitch the 1 cm (3/8 in) wide seam allowances together, 4 mm (a generous 1/8 in) from the edge. Press the seam allowances open. Then lay the pieces together, with right sides facing, and stitch 6 mm (1/4 in) from the edge so the first seam lies exactly along the fold. Press the allowances to one side.

Finish the lower edge of the skirt with closely spaced zigzag stitching as described for the underdress. On the left skirt piece, slash the slit as marked.

On the bodice, sew the right side seam, below the seam mark, as a French seam, clipping the seam allowances at the seam mark.

Gather the lower edge of the front on each side, between the 1st and 2nd asterisks, to:

10 11 12 13 14 cm (4 4 3/8 4 3/4 5 1/4 5 1/2 ins),

and in the centre to 9 cm (3 1/2 ins). Gather the lower edge of the back between the asterisks to:

25 27 29 31 33 cm (10 10 3/4 11 1/2 12 1/4 13 ins).

Stitch the backing strips for the front and back together to one long strip, stitching seam 1 cm (3/8 in) from edge. Baste the strip under lower edge of the front and back. Gather the upper edge of the skirt between pairs of asterisks to:

in the back: 12.5 13.5 14.5 15.5 16.5 cm (5 5 3/8 5 3/4 6 1/4 6 1/2 ins),

in the front: 14.5 15.5 16.5 17.5 18.5 cm (5 3/4 6 1/4 6 1/2 7 1/4 ins)

and to 4 cm (1 5/8 ins) from the centre front.

Lay right front edge of skirt on left front edge, with wrong side facing right side, and matching centre fronts. Pin the upper edges together. Stitch the skirt to the bodice allowances of bodice extend past edges of skirt slit. Neaten the seam allowances of the skirt joining seam together. On the sides, press the seam allowances down, ending at gathers and not pressing gathers flat.

Turn in one end of the binding strip. Pin the binding strip to the side edge of the front, below the seam mark, with long edge of the binding meeting the edge of the allowance. Slightly above the skirt attachment seam, slide the binding strip to the inside so that it extends past the cut edge of the skirt by 8 mm (a generous 1/4 in). Spread the slash edges apart to a straight line and pin the binding strip to the other edge of the skirt and bodice respectively. Turn upper end under at the seam mark. Stitch on the inside of dress as follows: 1 cm (3/8 in) from edge on bodice (marked seam line), then slightly inside the seam line toward skirt joining seam,

and 2 mm (a scant 1/8 in) from cut edges of skirt, tapering stitching toward end of slash. On bodice, clip the seam allowances diagonally, from the lower edge to the seam mark.

Press allowances on armhole edges to inside and finish edges with closely spaced zigzag stitching.

Press the binding strip over the joining seam into the opening, then fold edge under to a width of 1 cm (3/8 in), turn in, and sew to the joining seam. At the lower end of opening, topstitch binding diagonally, working from the inside. On the front opening edge, turn the binding to the inside, baste upper end in place. Sew 9 upper snap halves to inside of front opening edge, evenly spaced. Take even stitches and exit needle on the right fabric side. Sew lower snap halves to binding on back opening edge to match.

On front and back, neaten vertical edges of self-facing with closely spaced zigzag stitching. At each corner between shoulder edge and self-facing, clip diagonally into seam allowance. On front and back, gather shoulder seam edges to 4 cm (15/8 ins) wide. Baste backing strip to wrong side of back shoulder edges. Turn self-facing of front to inside on fold line but do not press fold edge. Baste side facing ends to wrong side of shoulder edges. Pin front shoulder edges right sides together with back shoulder edges. Lay self-facing of back on front and pin side facing ends to shoulder edges. Stitch shoulder seams. Neaten seam allowances together. Turn back facing to inside.

Pull overdress over underdress, with wrong side facing right side. Sew together by hand along shoulder seams. At centre front, hand sew skirt attachment seams of overdress and underdress together, approx. 10 cm (4 ins) long. Attach the decorative clasp (or brooch) to centre front, over the skirt joining seam.

---

**BurdaStyle**

Alberta Ferretti Dress 04/2012