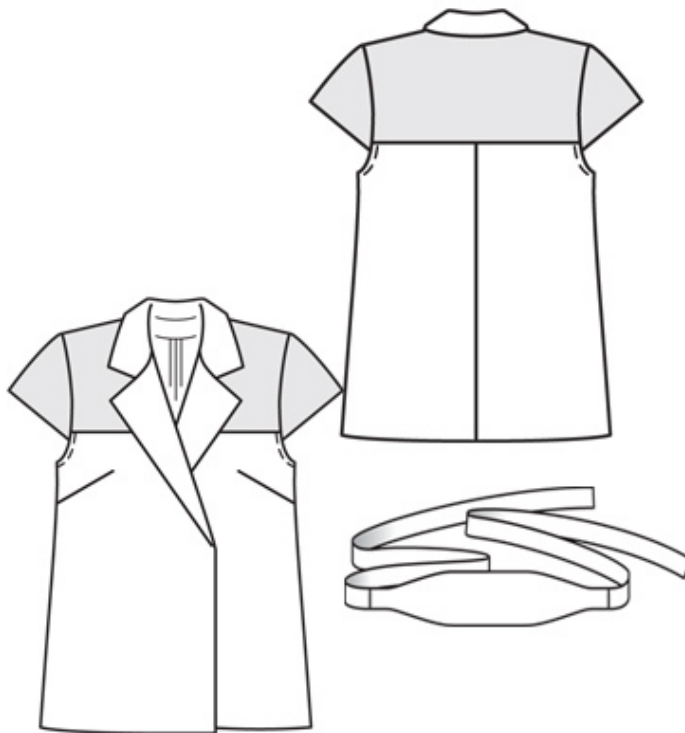


burda style magazine 02/2010 Blouse-like Jacket

By: burda style magazine

<http://www.burdastyle.com/projects/burda-style-magazine-022010-1>

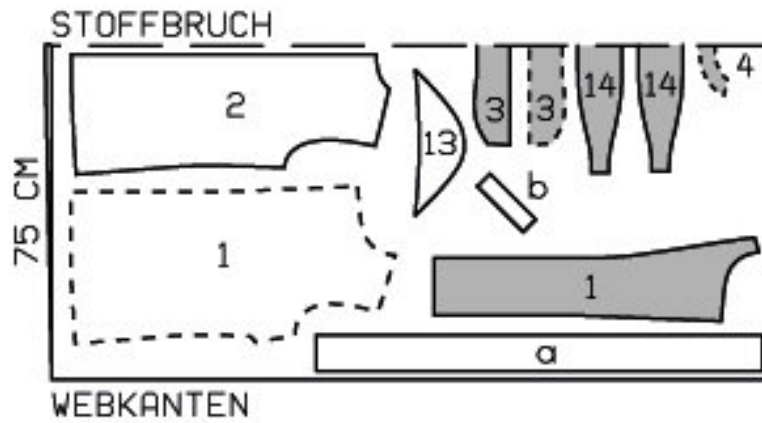


Blouse-like Jacket burda style magazine patterns FAQ

Materials

Satin and Sequinned Fabric

Step 1 — Preparation



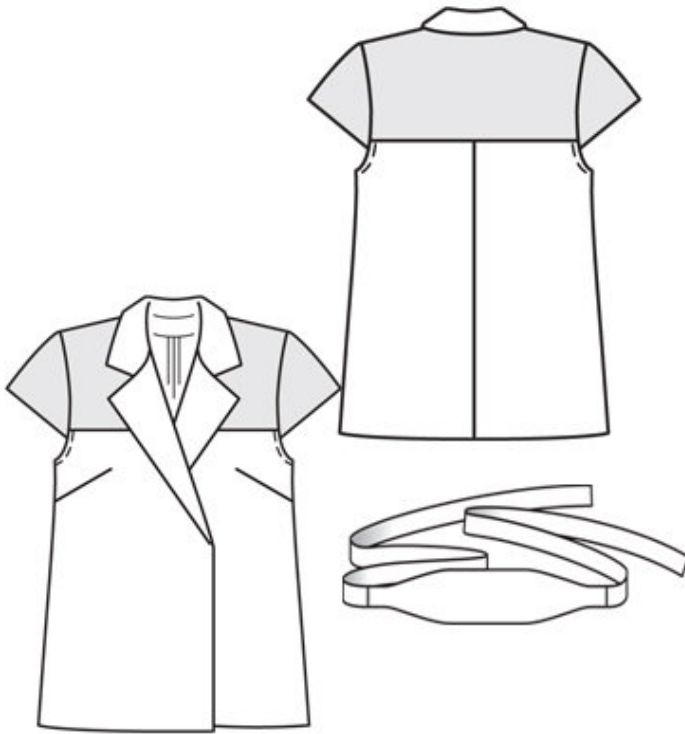
131 36-44
SATIN

Trace the pattern pieces from the pattern sheet. Follow lines and details for style 131. Trace the front facing from piece 1 as a separate pattern piece. Trace front yoke from piece 1 and back yoke from piece 2 each as a separate pattern piece.

Seam and hem allowances:

Seams and edges 1.5 cm (5/8 in), hem 4 cm (15/8 ins).

Step 2 — Cutting Out



Satin:

- 1 front 2x
- 1 front facing 2x
- 2 back 2x
- 3 collar, on a fold 2x
- 4 back facing, on a fold 1x
- 1 sleeve 2x
- 1 belt piece, on a fold 2x

- a) 2 tie bands, 96 — 100 — 104 — 108 — 112 cm (37³/₄ — 39¹/₂ — 41 — 42¹/₂ — 44¹/₄ ins) long, 8 cm (3¹/₄ ins) wide, finished width 4 cm (1⁵/₈ ins),
- b) 2 bias strips for armholes, 15 cm (6 ins) long, 4 cm (1⁵/₈ ins) wide (incl. allowance).

Sequined fabric (contrasting fabric):

- 1 front yoke 2x
- 2 back yoke, on a fold 1x
- 1 sleeve 2x

Interfacing: See pattern layout.

Step 3 — Bust Darts

Stitch bust darts. Press darts down. Stitch centre back seam. Press seam allowances open

Step 4 — Front Yokes

Stitch lower edge of front yokes and back yoke each to front and back pieces along marked line — with right sides facing and yokes pointing down. Lay yokes up over joining -seam and baste at edges.

Step 5 — Side Seams, Shoulder Seams and Facing Seams

Stitch side seams, shoulder seams and facing seams.

Step 6 — Notched collar and front edges

Lay two lapel pieces each right sides together, stitch along front lengthwise edges and upper edges of lapels to marking (seam number 2). Clip seam allowances at marking. Do not yet turn lapel pieces right side out. Stitch collar pieces right sides together on outer edges, beginning and ending stitching exactly on seam line of joining edge. Turn collar right side out and press. Lay ends of collar between lapel pieces, stitch ends of top collar and undercollar piece each to upper lapel edges. Press seam allowances open. Turn lapel pieces right side out. Press edges. Baste joining edges of lapel pieces together and stitch to front from seam number 3 to marking, go on to stitch edges of collar to front and back neck edge from marking. Clip diagonally into seam allowances of front at bottom corners. Press seam allowances of joining seam onto front and back. Fold lapel pieces outward on fold line, baste lower edges of each together. Lay bottom right end of lapel on bottom left end. Baste ends together and stitch to front from corner to corner. Press seam allowances down. Topstitch front close to lapel joining seam and go on to topstitch back 7 mm (1/4 in) wide next to collar joining seam, beginning and ending about 12 cm (5 ins) above lower end of lapel.

Step 7 — Sleeves

Lay sleeves of contrasting fabric on sleeves of main fabric, with right side facing wrong side. Stitch lower edges together. Trim seam allowances. Turn contrasting sleeves to right side of sleeves. Baste edges together. Stitch sleeves to fronts and back, above markings, eased to fit.

Step 8 — Bias Strips for Armholes

Fold bias strips for armholes in half lengthwise and press, right side facing out. Stitch doubled strips to armhole edges, below sleeves, so that fold edge of strips lies on garment -piece, 1 cm (3/8 in) past seam line and ends of strips lie over lower edges of sleeves. Trim seam allowances. Lay bias strips over seam allowances into armholes and stitch to -seam allowances, close to seam. Turn strips to inside. Press edges. Topstitch edges of armholes 7 mm (1/4 in) wide.

Step 9 — Shoulder Pads

Sew in shoulder pads.

Step 10 — Hems

Unfold facings at hem. Press hem allowance to inside. Sew on by hand. Lay facings to inside again and sew to hem allowance.

Step 11 — Snaps

Sew tops halves of snaps to right front facing as marked, not exiting needle on right side of fabric. Sew bottom halves of snaps to left front to match.

Step 12 — Belt

Press allowances at ends of one belt piece (underside) to inside. Lay belt pieces right sides facing. Stitch upper and lower edges together. Turn belt right side out and press edges. Fold tie bands lengthwise, right side facing in. Stitch lengthwise edge and across one end each. Trim seam allowances. Turn tie bands right side out and press. Stitch tie bands to ends of right side of belt. Lay seam allowances onto belt piece and press. Sew on ends of underside of belt by hand.

BurdaStyle

burda style magazine 02/2010 Blouse-like Jacket