

3/2011 Sleeveless Column Wedding Dress

By: burda style magazine

<http://www.burdastyle.com/projects/32011-sleeveless-column-wedding-dress>



Sleeveless Column Dress Please Note – The pattern layout associated with this pattern is identical to the layout for 3/2011 Drop-waisted Dress with Embellished Border. burda style magazine patterns FAQ

Materials

Silk crpe

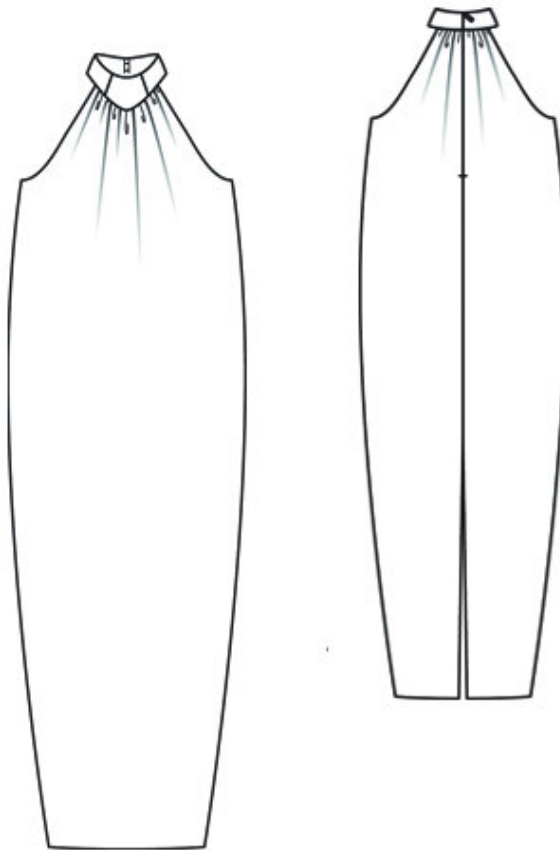
Step 1 — Preparation

Trace the pattern pieces from the pattern sheet. Glue pieces 1 and 1a and pieces 2 and 2a together on the joining lines. Cut piece 4 apart on the marked seam line = front and back collar pieces.

Seam and hem allowances:

Seams and edges 1.5 cm (5/8 in), hem 4 cm (15/8 ins), lining 1.5 cm (5/8 in).

Step 2 — Cutting Out



1 front, on a fold 1x

â– front lining piece, on a fold 1x

2 back 2x

â– back lining piece 2x

4 front collar piece, on a fold 2x

â– back collar piece 4x

Interfacing: See pattern layout. Iron Vilene Bias Tape (stay tape) to edges of arm-holes.

Step 3 — Stitch side seams

Stitch side seams.

Step 4 — Gather front and back neck edges

Gather front neck edge to 19.5 â– 20 â– 20.5 â– 20.7 â– 21 cm (73/4 â– 8 â– 81/8 â– 81/4 â– 83/4 ins) and gather each back neck edge to 6.5 â– 6.5 â– 6.7 â– 7.0 â– 7.0 cm (25/8 â– 25/8 â– 23/4 â– 27/8 â– 27/8 ins).

Step 5 — Stitch one back collar piece to neck edge of each back piece

Stitch one back collar piece to neck edge of each back piece, from back edge (seam number 6), about 4 cm (15/8 ins) long. Press seam allowances onto collar pieces.

Step 6 — Zipper

Sew invisible zip to back slit edges, from marked upper edge of collar. Stitch centre back seam from vent to zip.

Step 7 — Stitch seams of lining

Stitch seams of lining. Leave slit open for zip. Gather neck edges.

Step 8 — Stitch lining to dress along armhole edges

Lay lining right sides together with dress. Stitch lining to dress along armhole edges. Trim seam allowances. Turn lining to inside. Press edges. Turn lining edges under and sew to zip tapes. Baste lining to neck edge and to collar joining seams.

Step 9 — Stitch the attached back collar pieces to one front collar piece

Stitch the attached back collar pieces to one front collar piece. Stitch collar piece to remaining back neck edge and to front neck edge. Back edges of armholes meet back seam marks on collar and front edges of armholes meet front seam marks. Press seam allowances of joining seams and of the collar edges which lie between onto collar.

Step 10 — Inside Collar

Stitch remaining collar pieces together (= inside collar). Lay inside collar right sides together with attached outer collar and pin. Stitch along upper edge of collar. Turn collar right side out and press. Turn in narrow edges of collar and sew to zip tapes. Turn in inside edge of collar- and sew to joining seams. Turn in open edges of collar in between and sew them together.

Step 11 — Hem

Press hem allowance to inside but do not yet sew. Hem lining so that it is about 2 cm (3/4 in) shorter than -outer fabric. Pin edges of outer fabric and lining together at top of slit. Reach between outer fabric and lining, from below. First, on one side of slit, pull out edges. Pin edges together, right sides facing. Turn hem allowance to outside and pin over lining. Stitch along slit edge. Turn seam allowances onto lining and stitch close to seam. Push edge in place again and turn hem allowance to inside. Stitch remaining slit edges closed

in same manner. Sew hem allowance in place by hand.

BurdaStyle

3/2011 Sleeveless Column Wedding Dress