

Jocelyn

By: burdastyle

<http://www.burdastyle.com/projects/jocelyn>



This lovely little number comes to us thanks to member joclin, a winner from our Summer in the City competition. Depending on your fabric, you can make this top elegant and dressy or fun and casual, without even falling down the rabbit hole. We used a silk satin for the main self and belt, and silk charmeuse for the

sleeves. Instead of Velcro, we used wide flat hook and eyes, with a big sparkly button on top. This top would also be very nice in light cottons. Thanks again, joclin!

Materials

silk satin, silk charmeuse, silk lining, 2 sets hook and eye, big button.

Step 1

burda Download-Pattern Top 6022 – Instructions

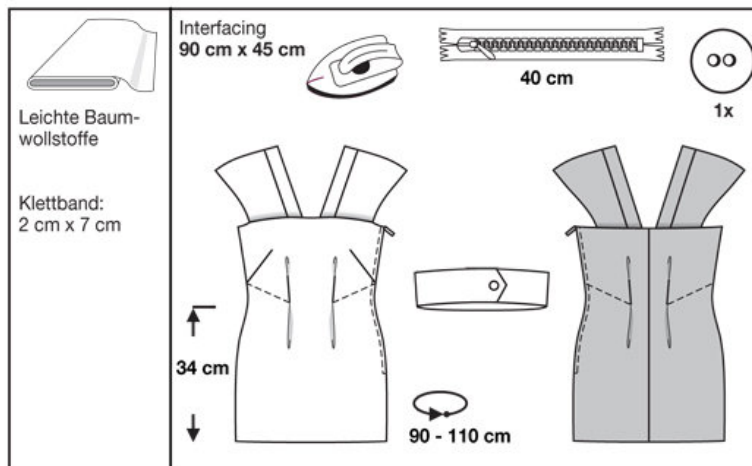


average

semi-fitted

burda sizes		55 ins / 140 cm					
		34	36	38	40	42	44
	yds	1 ³ / ₄	1 ³ / ₄	1 ³ / ₄	1 ³ / ₄	1 ³ / ₄	1 ³ / ₄
	m	1.50	1.50	1.50	1.50	1.50	1.50
Lining	yds	⁷ / ₈	⁷ / ₈	⁷ / ₈	⁷ / ₈	⁷ / ₈	⁷ / ₈
	m	0.65	0.65	0.65	0.65	0.65	0.65

→ with nap



PATTERN

- 1 Front piece 1x
- 2 Back piece 2x
- 3 Front facing 1x
- 4 Back facing 1x
- 5 Front placket (straps) 4x
- 6 Front straps 4x
- 7 Back placket (straps) 4x
- 8 Back straps 4x
- 9 Front belt 4x
- 10 Back belt 2x
- 11 Front piece – interlining 1x
- 12 Back piece – interlining 2x

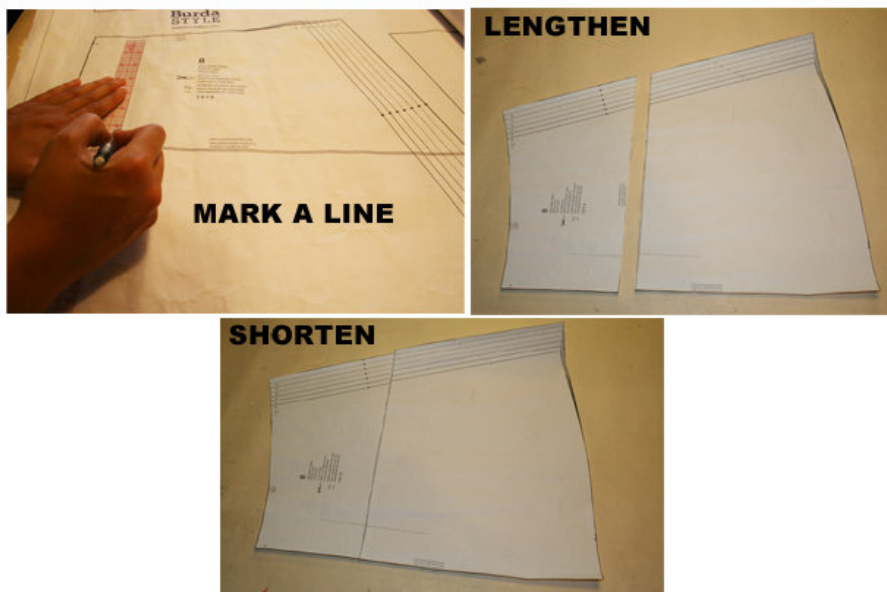
Fabrics: Light cotton fabrics, Velcro strip 1â– (2 cm) x 3â– (7 cm)

Step 2



The patterns can be printed out at the copy shop. If you decide to print them at home, follow the instructions: Paper cut for ANSI A (German DIN A4) prints: The patterns are printed out on 28 sheets with a thin frame. Wait until all sheets are printed out. Arrange the sheets so that they fit together (see additional page with the overview of the prints). Fold the single sheets on the upper and right edge along the thin frame lines. Begin with the left lower sheet and then tape the frame lines together precisely.

Step 3



ADJUST PATTERN PIECES

Select your size according to the Burda-dimension table: dresses, blouses, jackets and coats according to the

bust size, trousers and skirts according to the hip width. Change the pattern to fit your measurements if they deviate from the Burda-size chart. Cut out the pattern according to your size.

Refer to our *Adjust patterns for mixed sizes* technique

LENGTHENING OR SHORTENING THE PATTERN PIECES

Our pattern is calculated for a height of 5'6" (168 cm). If you are taller or shorter, you can adjust the pattern pieces along the lines marked "lengthen or shorten here". This way the proper fit is maintained.

Always adjust all pattern pieces along the same line to the same degree.

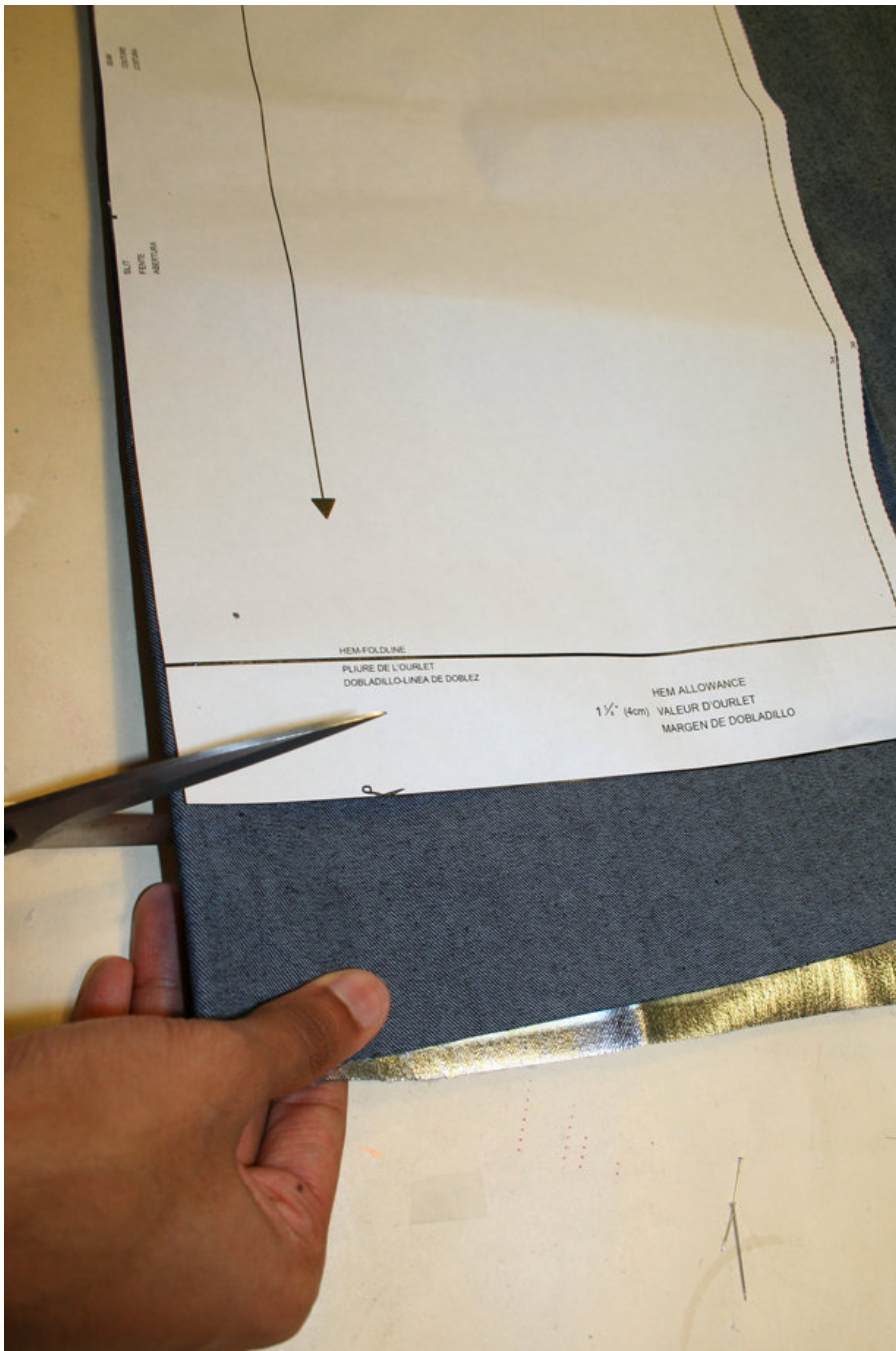
How to lengthen and shorten pattern pieces:

Cut the pattern pieces along the marked lines

To lengthen, slide the two halves of the pattern piece as far apart as necessary.

To shorten, overlap the two halves of the pattern piece as far as necessary. Blend the side edges.

Step 4



CUTTING OUT

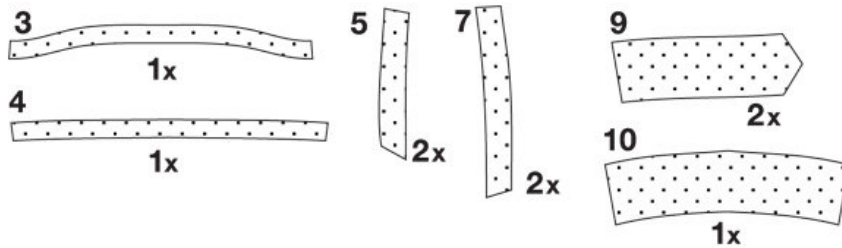
FOLD () means: Cut on the fold, the fold being the center of the pattern piece, but never a cut edge or seam. The piece should be cut double, with the fold line forming the center line. Pattern pieces that are outlined with a broken line in the cutting diagrams are to be placed face down on the fabric. The cutting diagrams on the pattern sheet show how the pattern pieces should be placed on the fabric.

The cutting diagrams show the placement of the pattern on the fabric.

For a single layer of fabric, the pattern pieces are pinned to the right side. For double layers of fabric, the right sides are facing and the pattern pieces are pinned to the wrong side. The pattern pieces that are shown extending over the fold of the fabric in the cutting diagram should be cut last from a single layer of fabric.

Step 5

INTERFACING



SEAM AND HEMLINE ALLOWANCES are included on an average: 1â– (3 cm) hemline, 5/8â– (1.5 cm) for all edges and stitches. Using BURDA copying paper, transfer the lines and signs of the pattern onto the wrong side of the fabric. Instructions can be found in the packaging.

Lining

Cut the lining according to piece 11 and 12 of the cutting diagram.

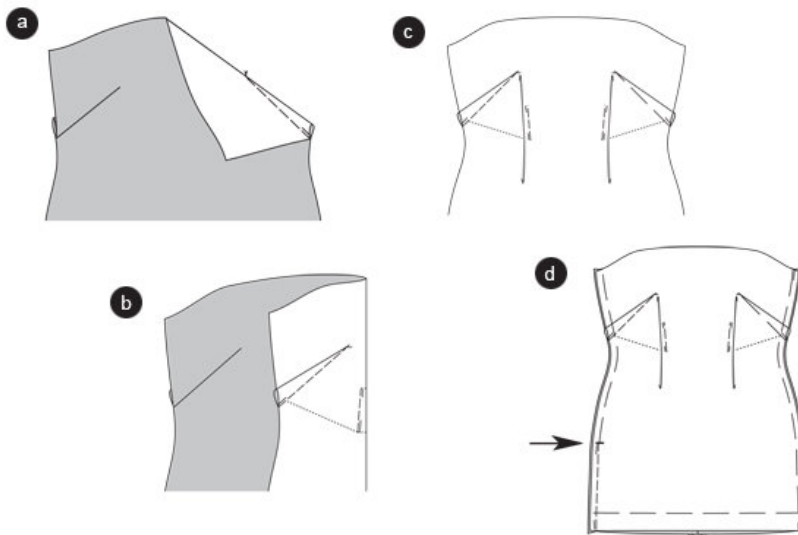
INTERFACING

Press the interfacing piece according to the cutting diagram onto the wrong side of the fabric.

Sewing

While sewing, the right sides of the fabric are facing. Transfer all lines of the pattern onto the right side of the fabric using basting stitches.

Step 6



Front piece

Darts

Pin the darts of the front piece and stitch to a point. Knot thread ends. Press the darts using an upwards motion (a).

Pleats

Fold the front piece (right sides facing) so that the lines of the pleat meet. Pin together the pleat lines between the cross lines and stitch. Secure seam ends(b). Press the pleats to the side ©.

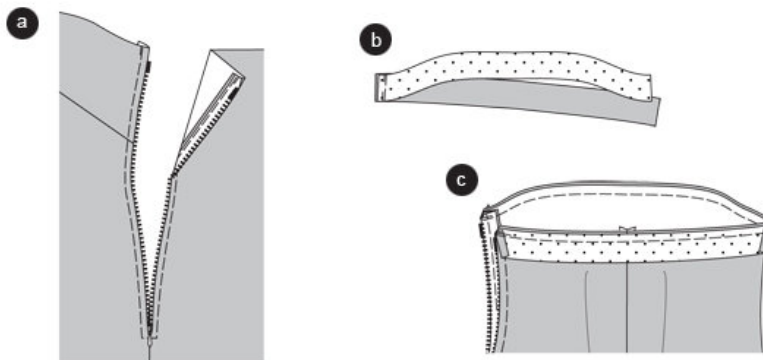
Back piece

Position the back pieces together, right sides facing. Pin the center seam and stitch. Neaten allowances and press apart. Stitch pleats.

Side seams

Position the front piece on the back piece, right sides facing. Baste the side seams (seam 4). Stitch the right side seam. Along the left side seam, stitch from the opening sign (arrow) to the bottom. Secure seam ends. Keep the opening basted. Neaten allowances and press apart. Open the basting stitches from the opening (d).

Step 7



Zipper

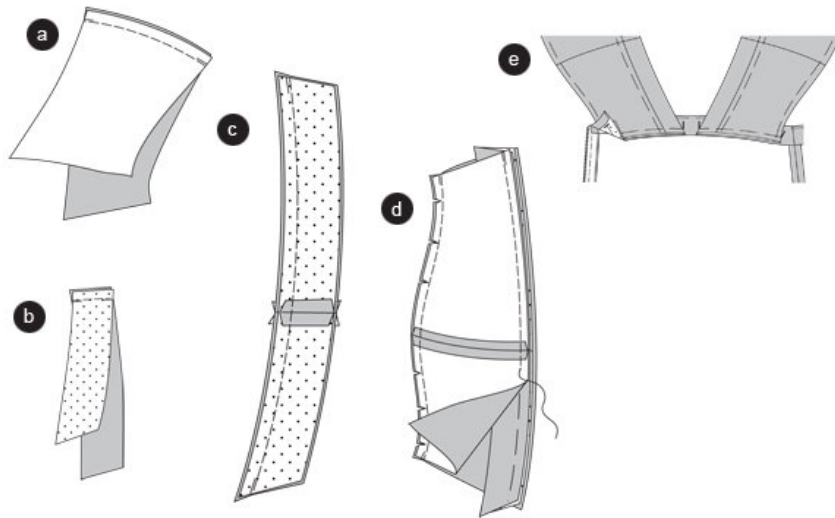
Pin the zipper under the opening edges so that the little teeth are hidden. Stitch the zipper using a zipper foot (a).

Top edge / facing

Position the front facing on the back facing, right sides facing; stitch the right side seam in reverse image to the top seam (seam 5). Press allowances apart (b).

Pin the facing on the upper top edge of dress, side seams meet. Turn the narrow facing edges along the zipper. Stitch facing to dress. Trim allowances. Fold the facing inside. Pin the top edge and press ©.

Step 8



Straps / plackets

Position the front straps on the back straps, right sides facing. Stitch shoulder seams (seam 1). Press allowances apart (a).

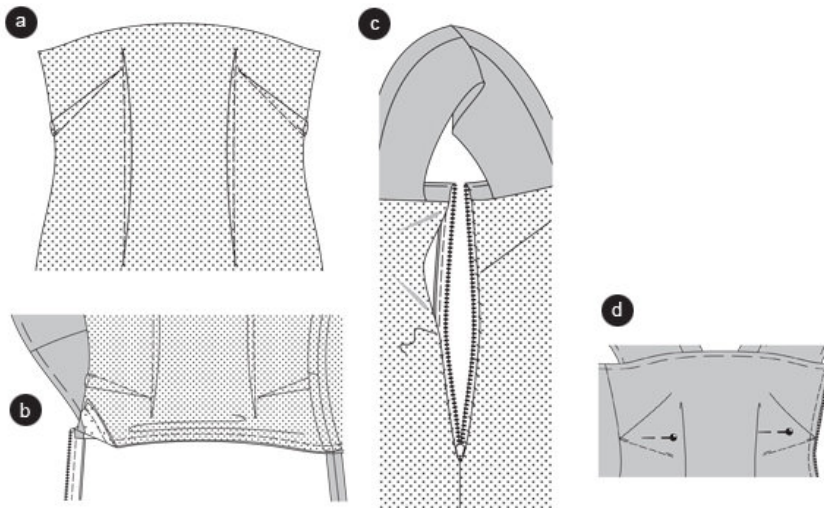
Position the front and back plackets together, both with interfacing, right sides facing. Stitch shoulder seams (seam 2). Press allowances apart. Stitch the plackets without interfacing in the same way (b).

Position a placket with interfacing and a placket without interfacing together, right sides facing. The shoulder seams meet. Stitch the plackets together along the front edges (seam 6 and 7). Trim allowances. Turn plackets. Pin edges and press ©.

Pin the plackets onto the front strap edge (seam 3), right sides facing. Position the second strap on top, right sides facing. The shoulder seams meet. Stitch the front strap edges together, sandwiching the placket. Stitch the side strap edges together. Trim allowances narrowly, snip in along the curves. Turn the straps. Flip the placket to the front (d).

Position the front ends of the straps onto the front placket, then pin between the cross lines onto the bottom placket edge (seam 6), leaving the front piece out. Pin the back strap ends onto the bottom edge of the back placket (seam 7). Note: pin the plackets around the straps at the front and back piece. Try the top on and adjust the strap length (e).

Step 9



Interlining

Stitch the center seam of the back piece. Neaten allowances and press apart. Stitch the bust darts of the front piece.

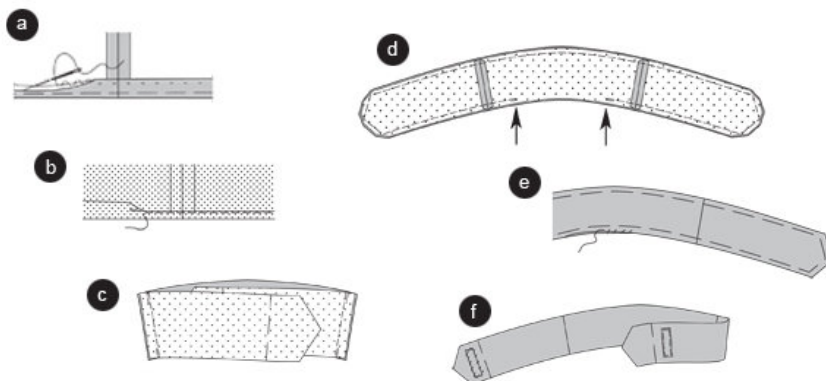
Stitch the waist darts of the front and back piece to a point. Knot thread ends. Press the darts towards the center. Stitch side seams (seam 8) thereby leaving the zipper opening at the left side seam open (a mirror image to the top). Neaten allowances and press apart (a).

Open the basting stitches at the plackets. Pin the lining onto the bottom placket edge (seam 9), right sides facing. The side seams meet. Stitch the lining onto the placket, sandwiching the straps. Press the allowances inside the lining. Place the interlining inside the top, the wrong sides of both pieces are facing (b).

Turn the placket ends and opening edges of the lining and stitch onto the zipper straps ©.

Pin the top onto the lining according to the marked stitch lines, then stitch. So the top will be fixed on the lining to give support to the placket and the straps. Note: additionally you could stitch the allowances of fabric and lining together, from the waist sign to the top for about 2 cm (6 cm) (d).

Step 10



Hemline

Neaten hemline, fold inside; press. Sew the hemline by hand (a).

Fold the hemline of the lining 1.5 cm inside and press. Fold again and stitch (b).

Belt

Position the front and back belt pieces with interlining together, right sides facing. Stitch side seams (seam 10). Press allowances apart. Stitch the belt pieces without interlining together the same way ©.

Position the belt pieces together, right sides facing. Stitch the edges together. Allow an opening of 15 cm on the back of the belt for turning (arrows). Secure thread ends, trim allowances, cut the corners on a slant (d). Turn the belt. Pin the edges and press. Sew the opening by hand (e).

Stitch the Velcro onto the right belt end at the button marking (X) through the inner layer of the fabric; to avoid stitching through to the outer fabric which would then be visible. Try belt on. Then stitch the other half of the Velcro on the outer layer of the left belt end. Sew the button onto the right belt end on the marking (X) (f).

BurdaStyle

Jocelyn