

# 06/2010 Tunic Top with Crochet Flowers

By: burda style magazine

<http://www.burdastyle.com/projects/062010-tunic-top-with-crochet->

---



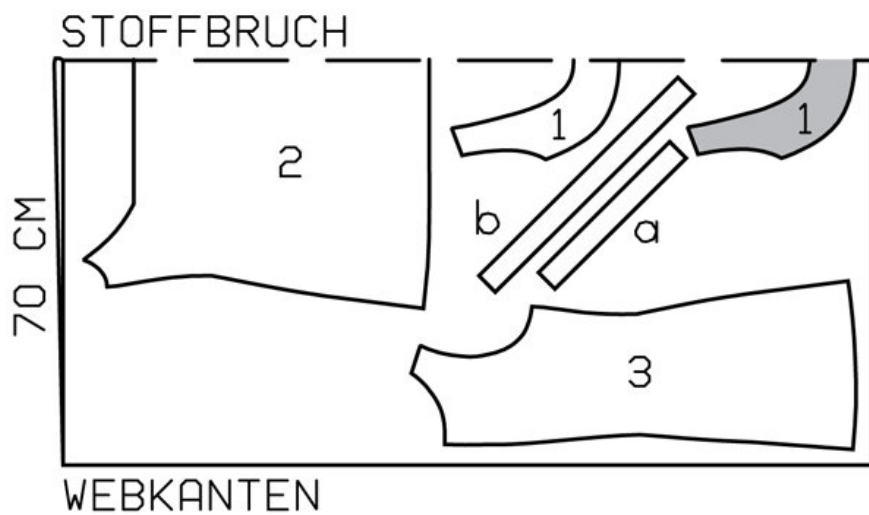
Tunic Top burda style magazine patterns FAQ

## Materials

batiste

---

## Step 1 — Preparation



102 17-21

Trace the pattern pieces from the pattern sheet. Pattern piece 4 is a template for the front pleats, it is not required to cut the fabric pieces.

Seam and hem allowances: Seams, edges and hem 1.5 cm (5/8 in).

---

## Step 2 — Cutting out



1 front yoke, on a fold 2x

2 front, on a fold 1x

3 back 2x

4 template for front pleats

a) bias strip for back neck edge, 30 — 31 — 32 — 33 — 33 cm (12 — 12 1/4 — 12 3/4 — 13 ins) long, 4 cm (1 5/8 ins) wide (incl. allowance),

b) 2 bias strips for armholes, 46 — 47 — 49 — 50 — 52 cm (18 1/8 — 18 1/2 — 19 1/4 — 19 3/4 — 20 1/2 ins) long, 4 cm (1 5/8 ins) wide (incl. allowance).

Interfacing: See pattern layout.

### Step 3 — Pleats

Hand-baste along marked pleat folds on front to make these lines visible on right side of fabric. Fold front on first pleat fold, wrong side facing in. Press pleat and topstitch as marked on pattern. Then press and topstitch remaining pleats, one after the other. Lay pleats toward left side and press.

### Step 4 — Yoke

Lay template (piece 4) over pleats on right side of fabric so that right side edge of template meets seam of first pleat and left side edge meets fold of last pleat. Lower edge of template lies on bottom end of pleat seams. Pin template in place. Mark seam line for yoke joining seam along upper edge of template. Trim front to 1.5 cm (5/8 in) from yoke joining line. Match buttonholes and as marked.

## **Step 5 — Interface outer yoke**

Baste the two yoke pieces together, with wrong side facing right side, and treat as one layer of fabric. Stitch this outer yoke piece to upper edge of front. Press seam allowances onto yoke.

---

## **Step 6 — Back seam and backdarts**

Stitch centre back seam and backdarts. Trim centre seam allowances to 7 mm (1/4 in) wide, neaten together and press to one side. Press darts toward centre.

---

## **Step 7 — Back neck edge**

Baste trim under neck edge. Edgestitch trim in place. Stitch lace trim along outside of neck edge. n Stitch shoulder seams, leaving allowances of front neck edge extending. Press seam allowances forward.

---

## **Step 8 — Yoke and neck**

Lay inside yoke right sides together with attached yoke. Stitch along neck edge. Trim seam allowances. Clip curves several times. Turn yoke right side out and press edge. Turn in inside yoke. Sew to shoulder seams and baste to yoke joining seam. Baste edges of armholes together without turning in. Topstitch yoke close to joining seam.

---

## **Step 9 — Armholes**

Face armholes with doubled bias strips as for neck edge.

---

## **Step 10 — Right side seam**

Stitch right side seam. Trim seam allowances, neaten together, and press onto back. Sew upper ends of seam allowances in place.

---

## **Step 11 — Zip**

Sew invisible zip to left opening edges. Stitch left side seam from lower edge to zip. Turn in top ends of zip tapes and sew in place.

---

## **Step 12 — Hem allowances**

Lay hem allowances to inside, fold half under, press, and stitch.

---

## **Step 13 — Tulle band**

Cut tulle band apart along centre, between rows of flitter. Trim edges of tulle strips to a width of about 5 mm (3/16 in). Sew 4 rows of flitter to neck edge of dress, by hand.

---

## Step 14 — Crochet flowers

Arrange crochet flowers on front yoke and sew in place by hand.

---

**BurdaStyle**

06/2010 Tunic Top with Crochet Flowers