

Doryon

By: burdastyle

<http://www.burdastyle.com/projects/doryon>



Weâ€™re in love! The Doryon romper is right in time for hot summer days. With sharp tailored details like the pleated shorts and the demure hand-sewn inset, this romper is calling for your special touch. You can accessorize this look with a contrasting belt or by tying a sash through the belt loops.

Materials

We used cotton to create our romper, fusible interfacing, 3 small snaps and a 40 cm. invisible zipper.

Step 1

**burda Download-Pattern
Romper 6045 - Instructions**

mittel körpernah

burda sizes		55 ins / 140 cm						
		32	34	36	38	40	42	44
Romper	yds	1 1/2	1 1/2	1 1/2	1 1/2	1 1/4	1 1/4	1 1/4
	m	1.30	1.30	1.30	1.30	1.40	1.40	1.40
		→	→	→	→	→	→	→
	yds	1/2	1/2	1/2	1/2	1/2	1/2	1/2
	m	0.35	0.35	0.35	0.35	0.40	0.40	0.45
		*	*	*	*	*	*	*

→ with nap * without nap

Interfacing 90 cm x 25 cm

Baumwollstoffe

3x

40 cm

right side

wrong side

interfacing

lining

batting

Patternpieces:

PATTERN

- 1 Front piece 1x
- 2 Front yoke 2x
- 3 Center back piece 1x
- 4 Back yoke 2x
- 5 Side back piece 2x
- 6 Front pants pieces 2x
- 7 Back pants pieces 2x
- 8 Pocket pouches 2x
- 9 Belt 1x
- 10 Bias strips (armhole) 2x
- 11 Loops 1x
- 12 Underlay / facing 2x

Fabrics: Cotton fabric

Step 2



The patterns can be printed out at the copy shop. If you decide to print them at home, follow the instructions: Paper cut for ANSI A (German DIN A4) prints: The patterns are printed out on 24 sheets with a thin frame. Wait until all sheets are printed out. Arrange the sheets so that they fit together (see additional page with the overview of the prints). Fold the single sheets on the upper and right edge along the thin frame lines. Begin with the left lower sheet and then tape the frame lines together precisely.

Step 3



ADJUST PATTERN SIZES

Select your size according to the Burda-dimension table: dresses, blouses, jackets and coats according to the bust size, trousers and skirts according to the hip width. Change the pattern to fit your measurements if they deviate from the Burda-size chart. Cut out the pattern according to your size. Refer to our "Adjust patterns for mixed sizes" technique

LENGTHENING OR SHORTENING THE PATTERN PIECES

Our pattern is calculated for a height of 5â€ 6â€ (168 cm). If you are taller or shorter, you can adjust the pattern pieces along the lines marked “lengthen or shorten here”. This way the proper fit is maintained. Always adjust all pattern pieces along the same line to the same degree.

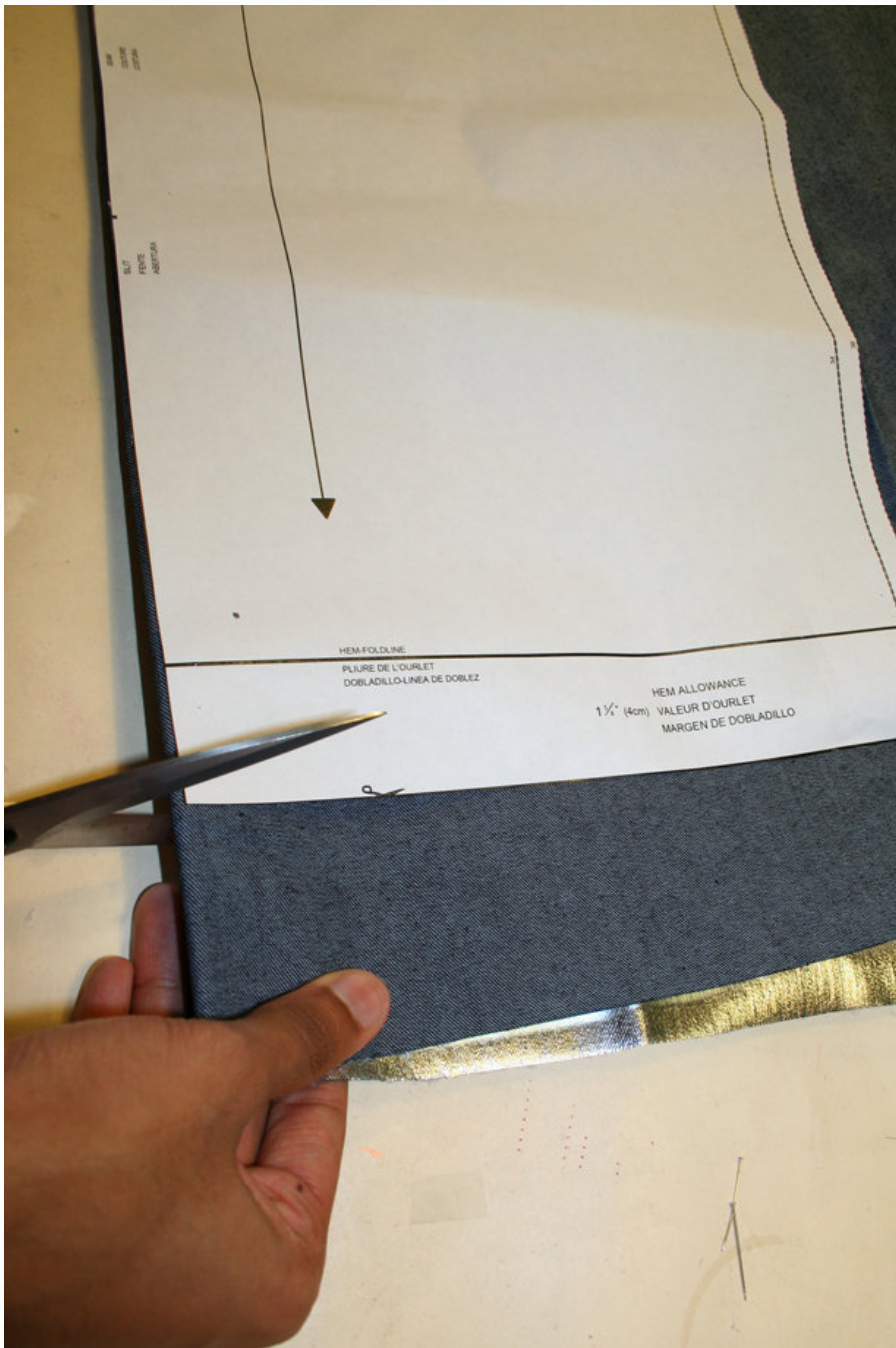
How to lengthen and shorten pattern pieces:

Cut the pattern pieces along the marked lines

To lengthen, slide the two halves of the pattern piece as far apart as necessary.

To shorten, overlap the two halves of the pattern piece as far as necessary. Blend the side edges.

Step 4



CUTTING OUT

FOLD () means: Cut on the fold, the fold being the center of the pattern piece, but never a cut edge or seam. The piece should be cut double, with the fold line forming the center line. Pattern pieces that are outlined with a broken line in the cutting diagrams are to be placed face down on the fabric. The cutting diagrams on the pattern sheet show how the pattern pieces should be placed on the fabric.

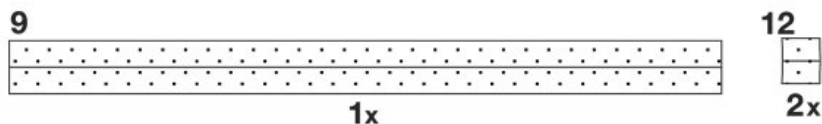
The cutting diagrams show the placement of the pattern on the fabric.

For a single layer of fabric, the pattern pieces are pinned to the right side. For double layers of fabric, the right sides are facing and the pattern pieces are pinned to the wrong side. The pattern pieces that are shown extending over the fold of the fabric in the cutting diagram should be cut last from a single layer of fabric.

Contrasting fabric: Cut pieces 2 and 4 twice from the contrasting fabric.

Step 5

INTERFACING



SEAM AND HEMLINE ALLOWANCES are included on an average:

1 5/8" - 8" (4 cm) for hem, 5/8" (1.5 cm) for all edges and stitches. Using BURDA copying paper, transfer the lines and signs of the pattern onto the wrong side of the fabric. Instructions can be found in the packaging.

Sewing

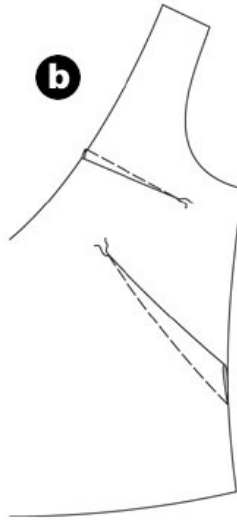
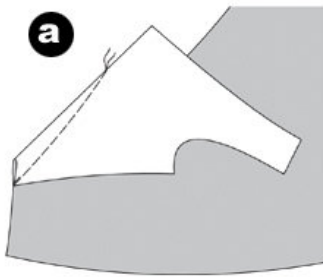
While sewing, the right sides of the fabric are facing.

Transfer all lines of the pattern onto the right side of the fabric using basting stitches.

Interfacing

Cut the interfacing according to the cutting diagram and press it onto the wrong side of the fabric.

Step 6

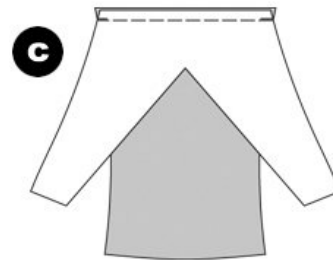
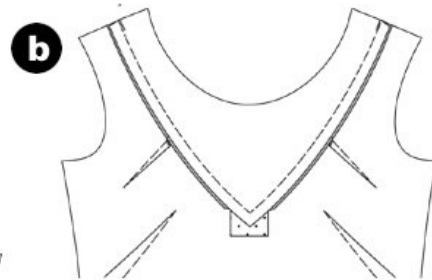
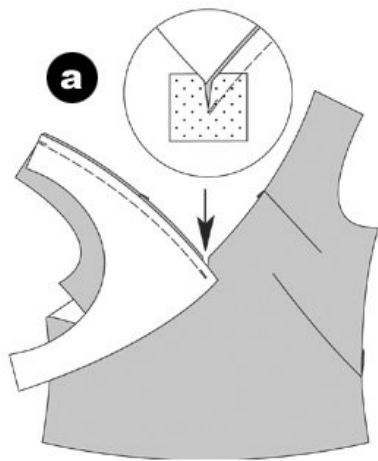


ROMPER SUIT

Top piece/ darts

Pin the darts on the front piece and stitch to a point. Knot thread ends. (a) Press the front darts downwards and the side darts upwards. (b)

Step 7



FRONT YOKE

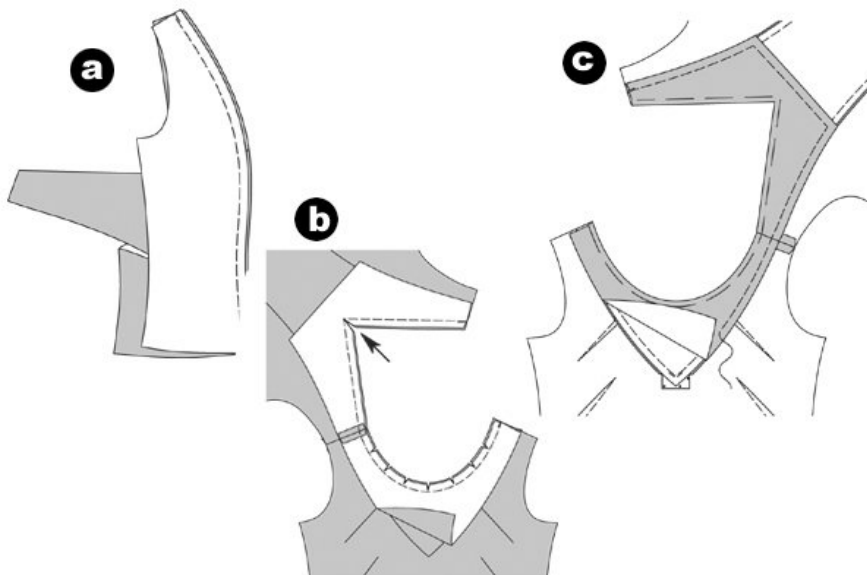
Press interfacing onto the corner of the center front.

Pin a front yoke onto the corner of the front piece (seam 1). Stitch. Secure seam ends. Snip in the corner of the allowances, close to the end of the seam line (arrow). Stitch the yoke. (a) Trim allowances, neaten and press inside the front piece (b).

BACK YOKE

Pin a back yoke onto the center back piece (seam number 2), right sides facing and stitch. Trim allowances, neaten and press downwards. ©

Step 8



BACK PRINCESS SEAMS

Position the side and back pieces together, right sides facing. Pin princess seams (seam 3), stitch. Trim allowances, neaten and press inside the side back piece. (a)

RIGHT SHOULDER SEAM

Position the front and back piece together, stitch right shoulder seam (seam number 4), the yoke seam lines meet. Trim allowances, neaten and press apart.

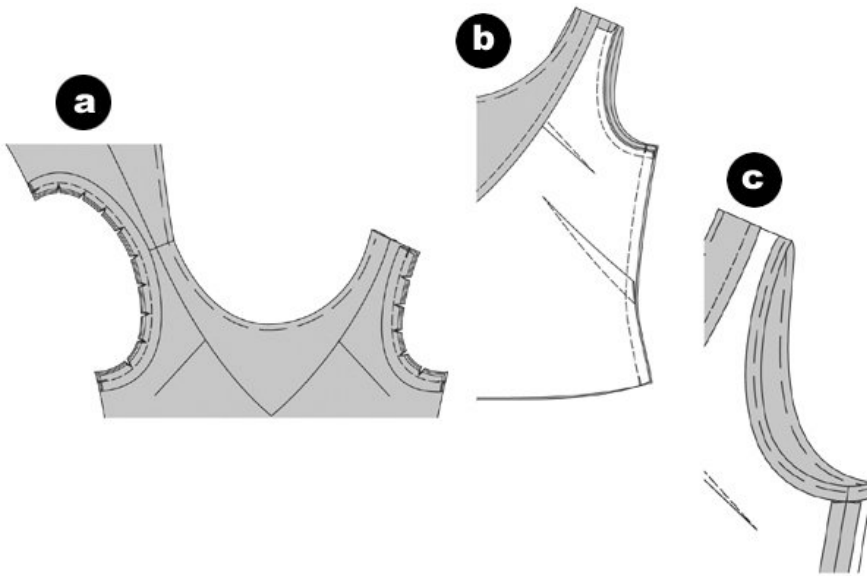
INNER YOKE / FACING

Position the front and back yoke together, right sides facing. Stitch the right shoulder seam as a mirror image to the top piece (seam number 4). Trim allowances and press apart. Neaten edges.

Position the facing onto the neckline, right sides facing. The right shoulder seams meet. Neckline edges meet. Trim allowances, snip in and cut in the corner of the center back piece (arrow) (b)

Turn the facing inside. Pin the neckline edge. Pin the inner facing edge and the yoke edge together. From the outside, stitch along the seam line, enclosing the facing. ©

Step 9



ARMHOLE / BIAS STRIPS (PIECE 10)

Fold the bias strips lengthwise in half, wrong sides facing. Press. Cut the bias strip into two pieces for the front and back armhole edges. Trim the armhole allowances to 1 cm.

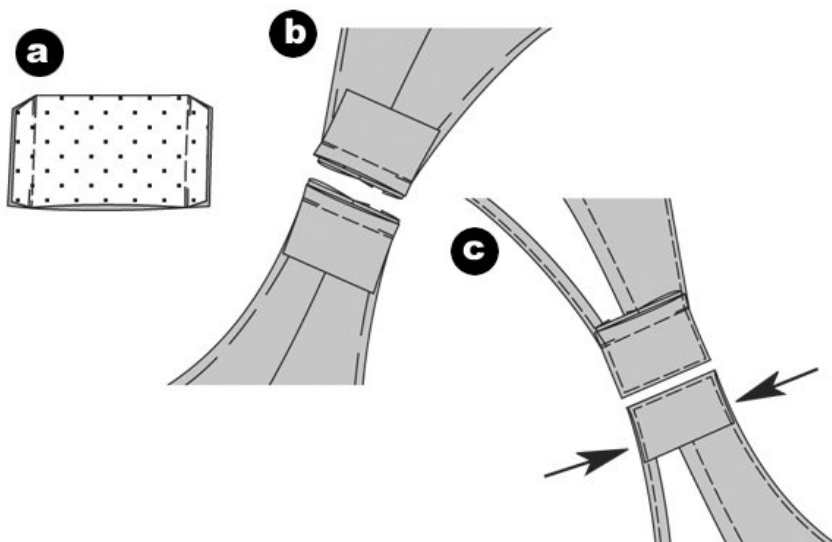
Pin the bias strip onto the armhole edge, right sides facing. The open edges are positioned on the allowance. Stitch the bias strips 1 cm. Trim allowances, snip in. Press the bias strips over the seam line into the armhole. (a)

RIGHT SIDE SEAM

Position the front and back piece together, right sides facing. Pin the right side seam (seam number 5). Stitch. Secure seam ends. Neaten allowances and press apart. (b)

Turn the bias strips inside the armhole, pin and press. ©

Step 10



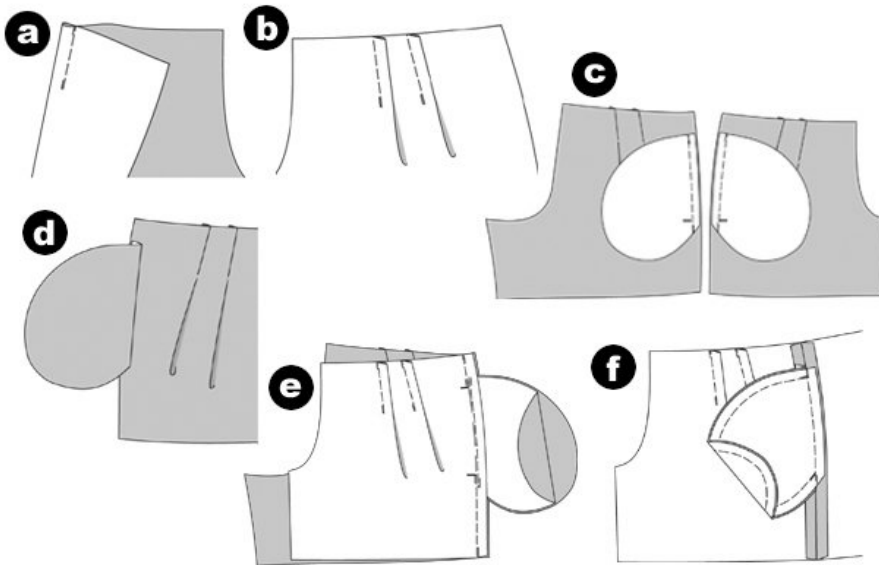
UNDERLAY / FACING

Fold underlay and facing along the fold line, right sides facing. Stitch side edges together. Trim allowances. Turn underlay and facing inside out and pin the edges. Press. Pin the open edges together. (a)

Stitch the underlay and facing onto the left shoulder edges of front and back piece, right sides facing. Trim allowances, neaten and press inside the front and back piece. (b)

Turn the facing at the front piece to the inside, pin along the side edges (arrow). Topstitch the armhole and neckline edges as well as underlay and shoulder edges narrowly, enclosing the facing. ©

Step 11



PANTS

Pleats

Fold the front pleats so the pleat lines meet, right sides facing. Stitch the pleat lines together from the top to the arrow. (a) Press the pleats towards the side edge (b). Stitch the pleats at the back pieces of the pants the same way. Press.

RIGHT SIDE SEAM / SEAM POCKETS

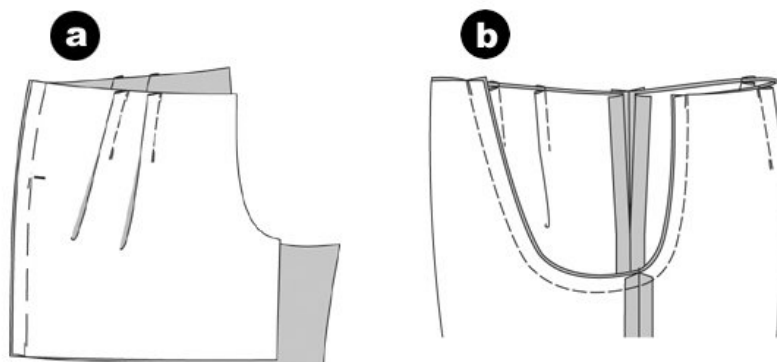
Pin the pocket pouch between the cross lines onto the right front and back pants pieces. Stitch and secure seam ends. ©

Turn the pocket pouches over the seam lines and press. (d)

Position the right front and back pants pieces together, right sides facing. Pin the side seams (seam number 6). Stitch, and leave the pocket openings between the cross lines open, but pinned. Secure seam ends. Neaten allowances and press apart. (e)

Press the pocket pouches inside the front pants pieces, pin together and stitch. Neaten allowances. (f)

Step 12



LEFT SIDE SEAM / ZIPPER OPENING

Position the left front and back pants pieces together, right sides facing. Pin the left side seam (seam number 6) and stitch from the opening sign to the bottom. Secure seam ends. Keep opening pinned. Neaten allowances and press apart. (a)

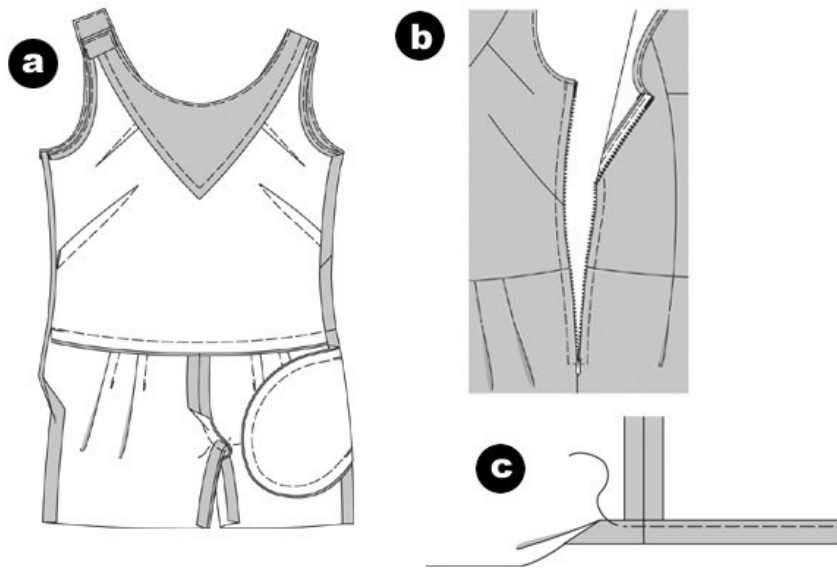
INNER PANTS LEGS

Fold the pants legs lengthwise, right sides facing. Stitch inner pants legs (seam line 7). Neaten allowances and press apart.

CENTER SEAM

Turn the pants leg inside out. Move one pants leg inside the other, right sides facing. Pin the center seam, inner leg seams meet. Stitch. Neaten allowances and press apart from the top to the edge of the curve. (b)

Step 13



STITCH PANTS

Position the zipper onto the zipper opening.

Position the pants on the top piece (seam number 8), right sides and center meet. Stitch, the right side seams meet. Neaten allowances and press inside the pants. (a)

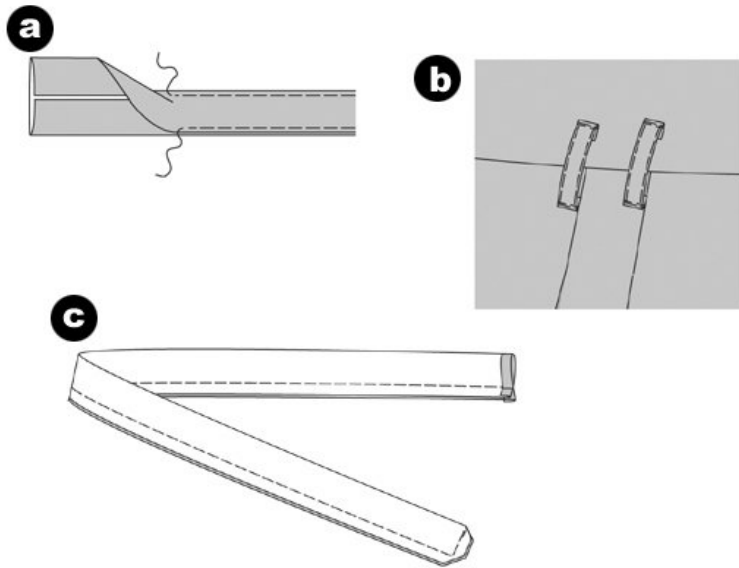
ZIPPER / LEFT SIDE SEAM

Neaten opening edge allowances, turn inside and press. Pin the zipper under the opening edges so that the little teeth are covered. At the armhole, turn the zipper straps to the inside and move under the allowances. Stitch the zipper using a zipper foot. (b)

HEMLINE

Neaten hemline, turn inside and press. Topstitch the bottom pants edges 1/2" (1.2 cm) wide, enclosing the hemline. ©

Step 14



BELT LOOPS (PIECE 11)

Fold the long edges of the strip towards the center line and press. Fold again in half, wrong sides facing. Topstitch the edges narrowly. Topstitch the fold line. Cut the strip into 8 equal pieces. (a)

Neaten the loop ends and fold inside. a loop should measure 3" (4.5 cm) long. Pin the loops, the marked lines meeting, over the pants seam line. Topstitch the ends narrowly. (b)

Apply a snap button to the left shoulder. Stitch the top piece at the front facing 1/2" (1.3 cm) from the top edge, neckline edge and armhole edge. Accordingly, stitch the bottom pieces along the under lay.

BELT

Turn the allowances along the narrow edge inside and press. Fold the belt along the fold line, right sides facing. Stitch the edges together. Trim allowances and cut the corners at a slant. Turn the belt inside out, Pin the edges and press. Topstitch the edges, closing the open edges. ©

Apply a SNAP BUTTON on the center front to the marked spot. Apply the top of the snap button to the inside of the right edge and the bottom piece to the outside of the left edge.

BurdaStyle

Doryon