

04/2011 Layered maxi dress

By: burda style magazine

<http://www.burdastyle.com/projects/042011-layered-maxi-dress>



Layered maxi dress burda style magazine patterns FAQ

Materials

cotton batiste with one embroidered border and scalloped edge

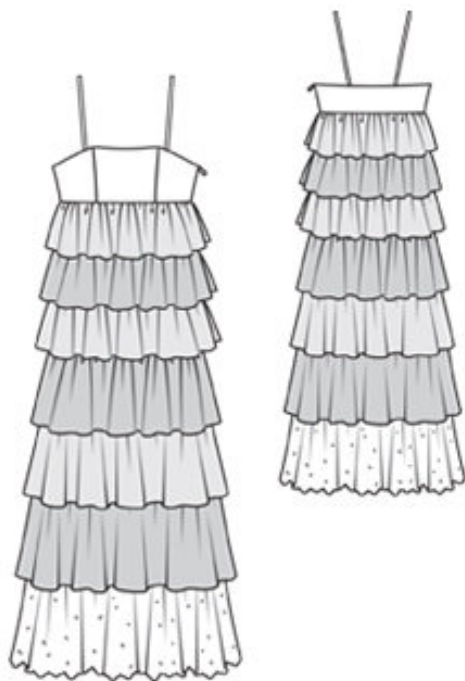
Step 1 — Preparation

Trace pattern pieces from pattern sheet. Follow lines and details for views A and B. For view A, lengthen pieces 24 and 25 as indicated.

Seam and hem allowances:

Seams, edges and hem 1.5 cm (5/8 in), flounces 1 cm (3/8 in), no allowances on lower edges of flounces.

Step 2 — Cutting out



Batiste with embroidered border:

21 centre front, on a fold 2x

22 side front 4x

23 back, on a fold 2x

24 skirt front, on a fold 1x

25 skirt back, on a fold 1x

a) 2 straps, 43 — 44 — 45 — 46 — 47 cm (17 — 17 1/4 — 17 3/4 — 18 1/8 — 18 1/2 ins) long, 4 cm (1 5/8 ins) wide (incl. allow.),

h) 7th (bottom) flounce, 180 — 184 — 188 — 192 — 196 cm (71 — 72 1/2 — 74 — 75 3/4 — 77 ins) wide, 27 cm (10 3/4 ins) long.

Scalloped edge = lower flounce edge.

Silk batiste:

b) 1st (top) flounce, 114 — 118 — 122 — 126 — 130 cm (45 — 46 1/2 — 48 — 49 3/4 — 51 1/4 ins) wide, 13 cm (5 1/4 ins) long,

d) 3rd flounce, 140 — 144 — 148 — 152 — 156 cm (55¼ — 56¾ — 58¼ — 60 — 61½ ins) wide, 18 cm (7 ins) long,

f) 5th flounce, 162 — 166 — 170 — 174 — 178 cm (63¾ — 65½ — 67 — 68½ — 70 ins) wide, 23 cm (9¼ ins) long.

Cut 5th flounce from wider border of fabric — selvedge = the lower edge of flounce.

Cotton batiste:

c) 2nd flounce, 2 pieces, 68 — 70 — 72 — 74 — 76 cm (26¾ — 27¾ — 28½ — 29¼ — 30 ins) wide, 18 cm (7 ins) long,

e) 4th flounce, 2 pieces, 76 — 78 — 80 — 82 — 84 cm (30 — 30¾ — 31½ — 32½ — 33 ins) wide, 23 cm (9¼ ins) long,

g) 6th flounce, 2 pieces, 88 — 90 — 92 — 94 — 96 cm (34¾ — 35½ — 36¼ — 37 — 37¾ ins) wide, 26 cm (10¼ ins) long.

Vilene Bias Tape/ stay tape: Iron onto upper edges of inside fronts and back.

Step 3 — Side seams

Stitch side fronts to centre fronts. Press allowances onto centre pieces. Stitch right side seam of bodice. Stitch side seam on inner layer as mirror image. Stitch right side seam on skirt.

Step 4 — Flounces

Stitch pieces for 2nd, 4th and 6th flounces together, each to one long piece.

Step 5 — Flounces

On the 3 upper flounces (b, c and d), press allowances on narrow edges to inside, turn in, and stitch. Topstitch 5 mm (3/16 in) from lower edge of each flounce — leave edge to fray slightly. Neaten upper edges of 2nd and 3rd flounces and gather. Stitch flounces to skirt, along respective joining lines, — leaving allowances of side skirt edges extending. Gather top flounce and baste to upper edge of skirt, leaving allowances of side skirt edges extending.

Step 6 — Bodice

Stitch skirt to bodice. Press seam allowances up.

Step 7 — Straps

Fold straps lengthwise, right side facing in. Stitch 1 cm (3/8 in) from fold edge. Turn straps right side out and press. Baste front ends of straps to upper edge of dress as marked.

Step 8 — Bodice

Lay inside unit on bodice, right sides facing. Stitch upper edges together. Trim seam allowances. Turn inside piece up and stitch to seam allowances, close to seam. Turn inside piece to inside, turn edge under, and sew to skirt joining seam. Baste side edges together, not turned under.

Step 9 — Zip

Sew invisible zip to left slit edges. Leave top ends of zip tapes extending. Stitch left side seam from lower edge to zip. Turn in top ends of zip tapes and sew in place.

Step 10 — Hem

Stitch a narrow hem.

Step 11 — Stitch flounces

On remaining flounces, stitch narrow edges together. Topstitch 5 mm (3/16 in) from lower edges of 4th and 6th flounces, leaving edges to fray slightly. Neaten upper edge of 4th, 5th, 6th, and 7th flounces. Gather these edges. Stitch flounces in place, along respective joining lines.

Step 12 — Straps

Pin back ends of straps under upper back edge, between seam marks. Try on dress to determine correct strap length. Sew straps in place.

BurdaStyle

04/2011 Layered maxi dress