

Kristen

By: burdastyle

<http://www.burdastyle.com/projects/kristen>



We love this dress! With its vintage feel, full back, and center front insets, it has enough lovely details to

satisfy the most fashion-obsessed sewers. Depending on your fabrication choices, it's sweet enough for a summer party or sophisticated enough for the office. We also added extra chiffon details at the neck and sleeves.

Materials

cotton, chiffon, one button, zipper, interfacing

Step 1

**burda Download-Pattern
6046 - Instructions**

●●●●● mittel normal weit

burda sizes		55 ins / 140 cm												
		32	34	36	38	40	42	44	46	48	50	52	54	56
Dress	yds	1 1/4	1 1/2	1 3/4	1 7/8	2 1/8	2 1/4	2 1/2	2 3/4	2 3/4	2 3/4	2 3/4	2 3/4	
	m	1.50	1.65	1.70	1.75	1.85	1.90	1.95	2.10	2.25	2.30	2.40	2.40	
Contrasting fabric	yds	3/4	3/4	3/4	3/4	3/4	3/4	3/4	3/4	3/4	3/4	3/4	3/4	
	m	0.65	0.65	0.65	0.70	0.70	0.70	0.70	0.70	0.70	0.70	0.70	0.70	
Lining	yds	1 1/4	1 1/4	1 1/4	1 1/4	1 1/4	1 1/4	1 1/4	1 1/4	1 1/4	1 1/4	1 1/4	1 1/4	
	m	1.60	1.60	1.60	1.60	1.60	1.60	1.60	1.60	1.60	1.60	1.60	1.60	

→ with nap

Interfacing
90 cm x 25 cm

Satin
Garniturstoff:
Chiffon, Georgette

Patternpieces:

32-42

44-56

PATTERN

Sizes 4 to 14 (EU 32 to 42)

- 1 Front piece 2x
- 2 Back piece 1x
- 3 Front placket 1x
- 4 Back placket 1x
- 5 Front skirt panel 2x
- 6 Back skirt panel 2x
- 7 Collar 2x
- 8 Placket (sleeve) 2x
- 9 Placket I (front piece) 2x
- 10 Placket II (front piece) 2x
- 11 Placket I (skirt) 2x
- 12 Placket II (skirt) 2x
- 13 Loops 1x
- 14 Bias strips (sleeve) 2x

Sizes 16 to 28 (EU 44 to 56)

- 15 Front piece 2x
- 16 Back piece 1x
- 17 Front placket 1x
- 18 Back placket 1x

- 19 Front skirt panel 2x
- 20 back skirt panel 2x
- 21 Collar 2x
- 22 Placket (sleeve) 2x
- 23 Placket I (front piece) 2x
- 24 Placket II (front piece) 2x
- 25 Placket I (skirt) 2x
- 26 Placket II (skirt) 2x
- 27 Loops 1x
- 28 Bias strips (sleeve) 2x

Fabrics: Satin, contrasting fabric: chiffon, georgette

Step 2



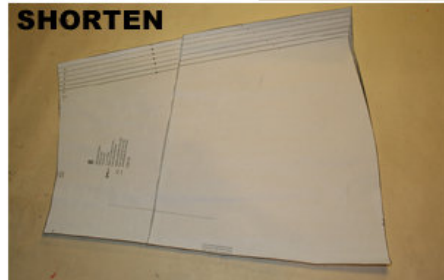
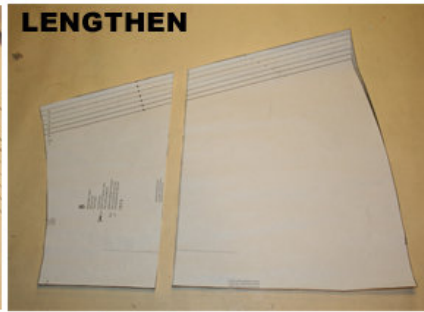
The patterns can be printed out at the copy shop. If you decide to print them at home, follow the instructions: Paper cut for ANSI A (German DIN A4) prints:

For sizes 4 to 14 (EU 32 to 42), the patterns are printed out on 30 sheets with a thin frame.

For sizes 16 to 28 (EU 44 to 56), the patterns are printed out on 40 sheets with a thin frame.

Wait until all sheets are printed out. Arrange the sheets so that they fit together (see additional page with the overview of the prints). Fold the single sheets on the upper and right edge along the thin frame lines. Begin with the left lower sheet and then tape the frame lines together precisely.

Step 3



ADJUST PATTERN SIZES

Select your size according to the Burda-dimension table: dresses, blouses, jackets and coats according to the bust size, trousers and skirts according to the hip width. Change the pattern to fit your measurements if they deviate from the Burda-size chart.

Cut out the pattern pieces according to your size.

Sizes 4 to 14 (EU 32 to 42): pattern pieces 1 to 14, Sizes 16 to 28 (EU 44 to 56): pattern pieces 15 to 28.

Refer to our 'Adjust patterns for mixed sizes' technique

LENGTHENING OR SHORTENING THE PATTERN PIECES

Our pattern is calculated for a height of 5' 6" (168 cm). If you are taller or shorter, you can adjust the pattern pieces along the lines marked "lengthen or shorten here". This way the proper fit is maintained.

Always adjust all pattern pieces along the same line to the same degree.

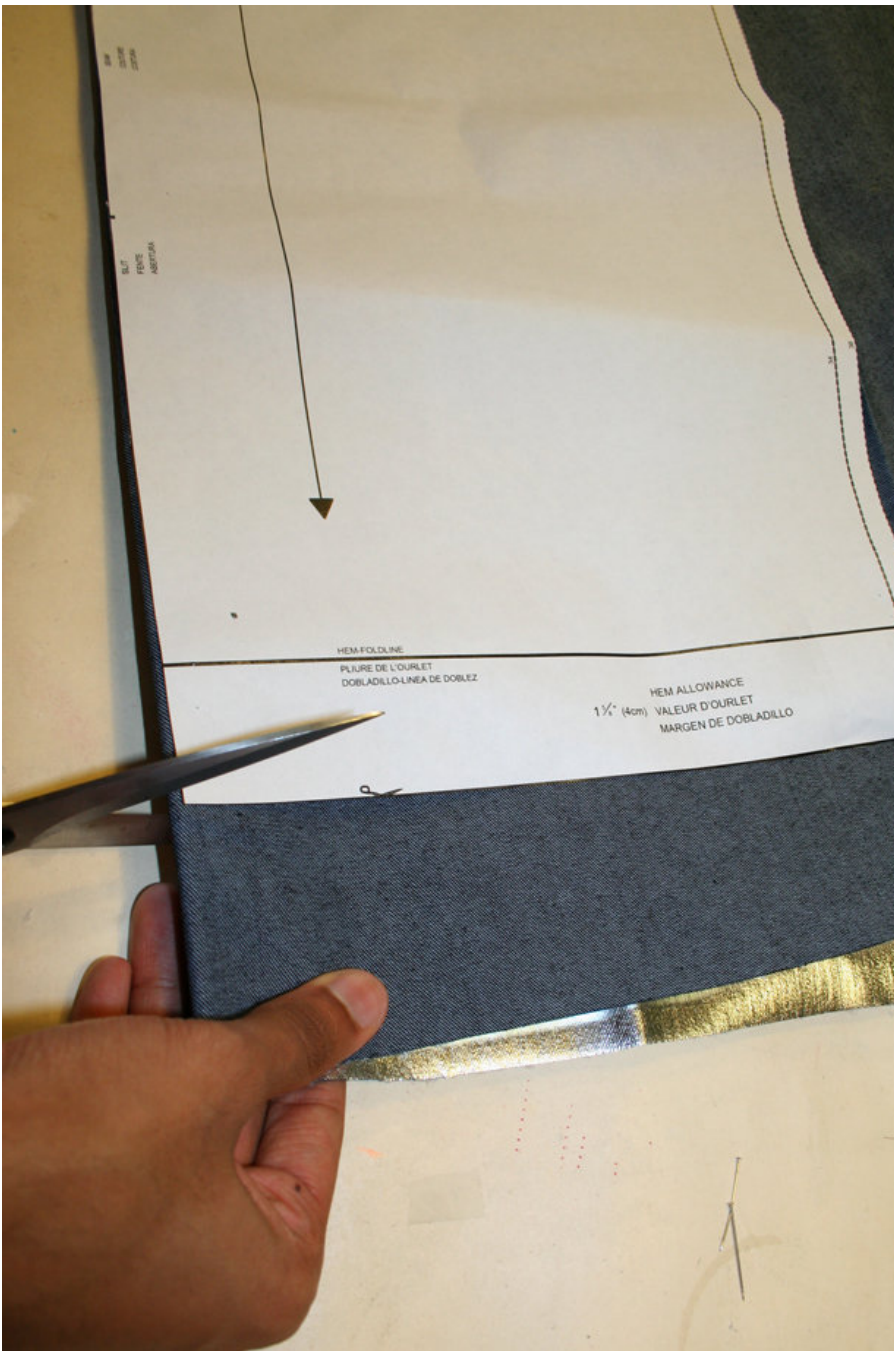
How to lengthen and shorten pattern pieces:

Cut the pattern pieces along the marked lines

To lengthen, slide the two halves of the pattern piece as far apart as necessary.

To shorten, overlap the two halves of the pattern piece as far as necessary. Blend the side edges.

Step 4



CUTTING OUT

FOLD (â’ â’ â’ â’) means: Cut on the fold, the fold being the center of the pattern piece, but never a cut edge or seam. The piece should be cut double, with the fold line forming the center line. Pattern pieces are outlined with a broken line in the cutting diagrams are placed face down on the fabric. The cutting diagrams on the pattern sheet show how the pattern pieces should be placed on the fabric.

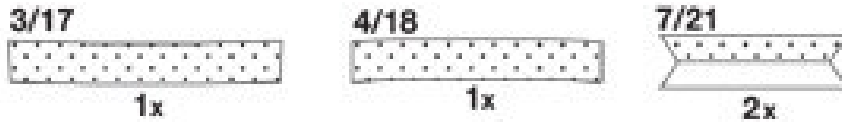
The cutting diagrams show the placement of the pattern on the fabric.

For a single layer of fabric, the pattern pieces are pinned to the right side. For double layers of fabric, the right sides are facing and the pattern pieces are pinned to the wrong side. The pattern pieces that are shown extending over the fold of the fabric in the cutting diagram should be cut last from a single layer of fabric. Cut the scarf (Pieces 9 to 18) from contrasting fabric according to the cutting diagram.

CONTRASTING FABRIC

For sizes 4 to 14 (EU 32 to 42) cut pieces 9 to 13,
for sizes 16 to 28 (EU 44 to 56) cut pieces 23 to 27
from the contrasting fabric (chiffon / georgette).

Step 5



SEAM AND HEMLINE ALLOWANCES are included:

1_â' (4 cm) for the hemline and 5/8â' (1.5 cm) for all edges and stitches. Using BURDA copying paper, transfer the lines and signs of the pattern onto the wrong fabric side. Instructions can be found in the packaging.

LINING

For sizes 4 to 14 (EU 32 to 42) cut the lining according to pattern pieces 1 to 6, 8 and 14 and
for sizes 16 to 28 (EU 44 to 56) according to 15 to 20, 22 and 28 according to the cutting diagram.

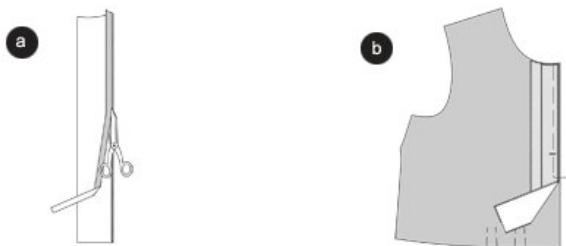
SEWING

While sewing, the right sides of the fabric are facing. Transfer all lines of the pattern onto the right side of the fabric using basting stitches.

INTERFACING

Cut the interfacing according to the cutting diagram and press it onto the wrong side of the fabric.

Step 6



DRESS

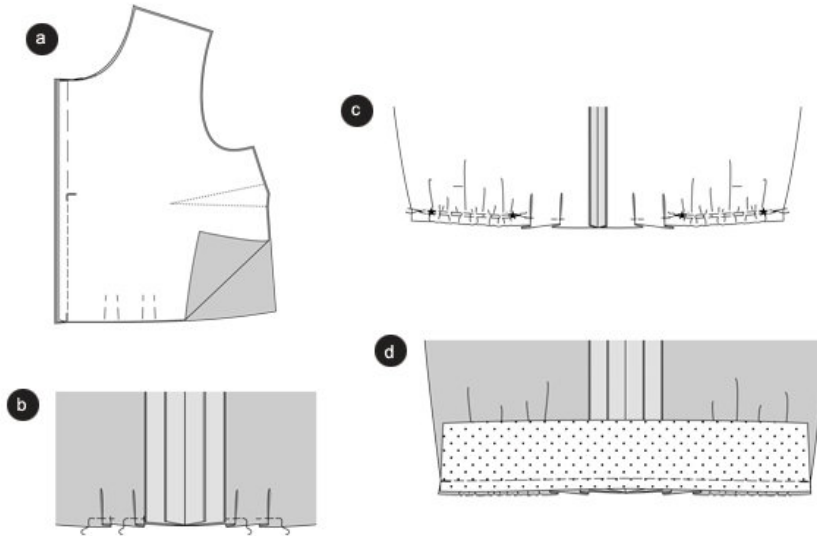
PLACKET I and II (front piece)

Fold the allowances of the outer edge of the plackets, and press. Topstitch the fold line using a narrowly adjusted zigzag stitch. Trim the overlapping allowance close to the seam line. (a)

ADVICE: make a test using waste fabric. Test the stitch adjustment and thread tension.

Pin plackets II on plackets I according to the picture. The opening edges positioned together. Pin the plackets on the front edges of the front pieces (4/12). The opening edges are positioned together. (b)

Step 7



CENTER FRONT SEAM

Position the front pieces together, right sides facing. Pin the center seam and baste the opening edges together. Stitch the center seam from the opening sign to the bottom. Press allowances apart. Open the basting stitches along the opening. (a)

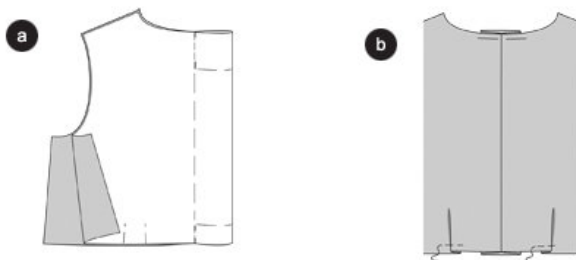
Pin BUST DARTS and stitch to a point. Knot thread ends. Press the bust darts.

From the right side of the fabric, fold the PLEATS on the front piece into position (arrow), and pin. (b)

Double stitch the bottom edge from * to * narrowly using basting stitches. Tighten bobbin threads until the length of the front piece adjusts to the front placket. Knot threads. Distribute the width equally. ©

Pin the front placket on the front piece (seam 1/9), right sides facing and centers meeting. Stitch. Trim allowances and press inside the placket. (d)

Step 8



BACK PIECE / PLEAT

Fold the back piece lengthwise in half, right sides facing. Pin the pleat lines together. Stitch along the pleat lines from the top to the arrow. Secure seam ends. (a)

Press the pleat. The pinned seam is positioned on the center back. Pin the pleat deepness along the top and bottom edge. Fold the side pleats along the bottom edge in position (arrow), and pin. Double stitch the back piece narrowly using basting stitches. Tighten the bobbin threads so that the pack piece adjusts to the length of the placket. (b)

Stitch the BACK PLACKET on the back piece (seam 1/10).

SKIRT

Pin the DARTS of the back skirt panels, right sides facing. Pin the center seam and stitch. Neaten allowances and press apart.

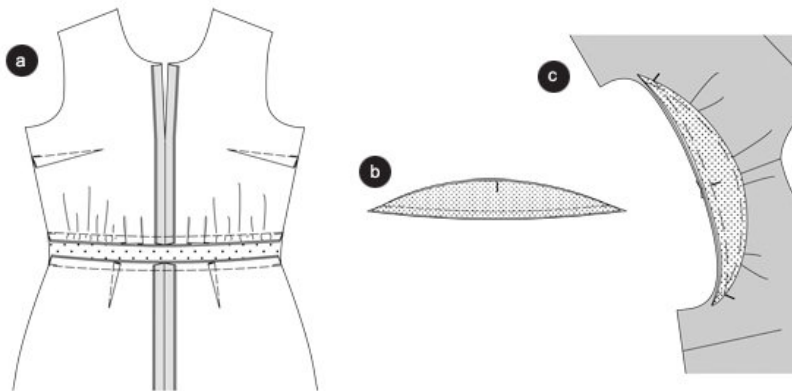
CENTER BACK SEAM

Position the back skirt panels together, right sides facing. Pin the center seam and stitch. Neaten allowances and press apart.

PLACKET I and II (SKIRT)

Neaten the plackets according to the text and picture 1. Position the plackets together according to the text and picture 2 and 3. Pin the plackets on the front edge of the front skirt panels. Pin the front skirt panels, right sides facing. Pin the center seam and stitch. Neaten allowances and press apart.

Step 9



STITCH SKIRT PANELS

Pin the front skirt panels on the front placket (seam 6/14), right sides facing and centers meeting. Stitch. Trim allowances and press.

Stitch the BACK SKIRT PANEL on the back placket (seam 7/15).

SHOULDER SEAMS

Position the front piece on the back piece, right sides facing. pin shoulder seams (3/11) and stitch. Press allowances apart.

SLEEVE PLACKETS

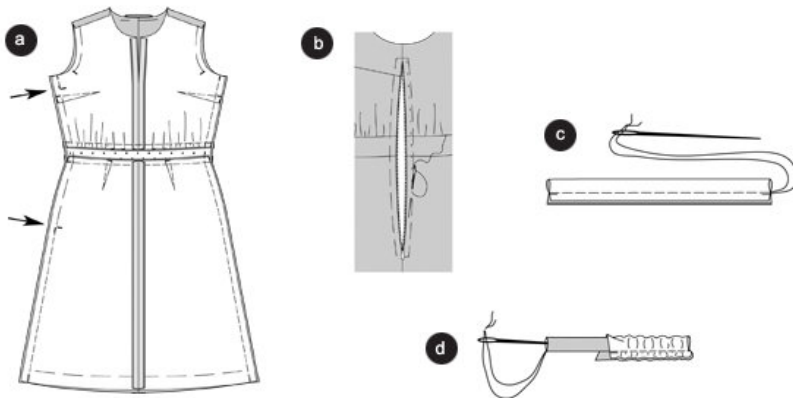
Position the fabric and lining plackets together, right sides facing. Pin the outer edges (edges without cross line) together and stitch. Trim allowances. Turn plackets. Pin edges and press. Pin the open edges together.

Pin the placket on the armhole (seam 5/13), right sides facing; the cross line meets the shoulder seam. (a)

SIDE SEAMS / LEFT OPENING

Position the front and back piece together, right sides facing. Pin side seams (seam 8/16). The plackets at the waist meet. Stitch right side seam. Stitch the LEFT side seam above and below the opening sign (arrows). Secure seam ends. (b)

Step 10



ZIPPER

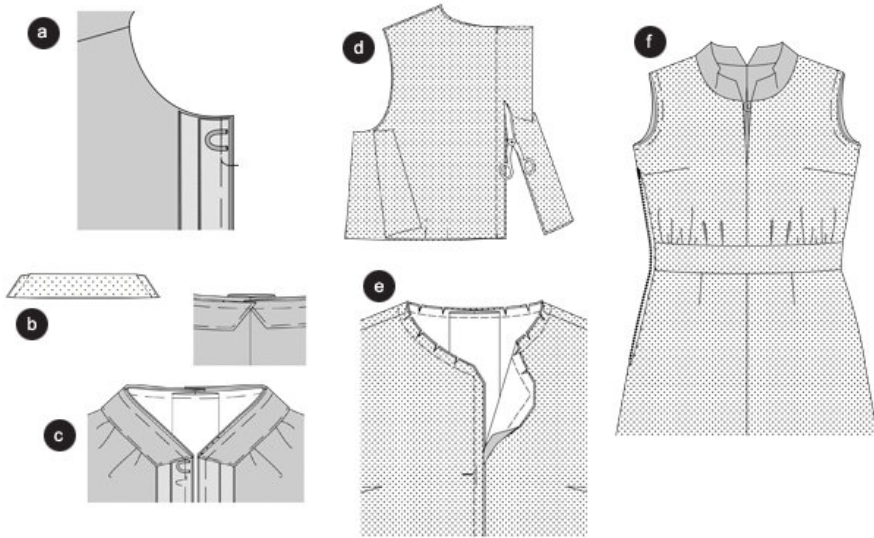
Pin the zipper under the opening edges so that the little teeth are hidden. Stitch the zipper using a zipper foot. (a)

LOOPS

Fold the strips lengthwise, right sides facing. Stitch $\frac{1}{2}$ " (0.7 cm) from the fold line. Trim allowances. Thread a needle and knot the threads (b). Push the needle, the eye of the needle ahead, through the tunnel ©.

Fold the loop and, from the neckline edge, pin on the right front edge. The size of the loop has to be slightly bigger than the button. (d)

Step 11



COLLAR

Fold the collar pieces along the fold line, right sides facing. Stitch the short sides together. Trim allowances and cut the corners at a slant. Turn the collar pieces. Pin edges and press. Pin the open edges together. (a)

Pin the collar pieces on the neckline (seam 4/12); the back edges meet at the center back. The allowances of the front edges overlap. (b)

LINING

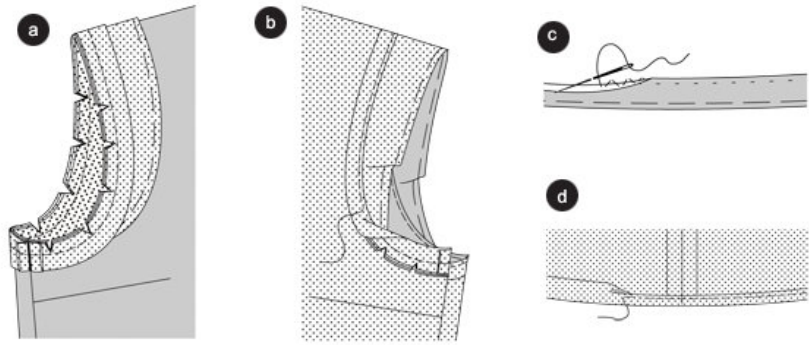
Fold the back piece in half, right sides facing. Pin the pleat lines together and stitch from the top to the bottom. Trim the allowances to 1 cm. Press allowances apart. ©

Stitch the lining as the dress. Same seam numbers meet. (d)

Pull the lining piece over the dress, right sides facing and same seams meet. At the end of the neckline opening, pin the front center seams together. Pin the neckline edges and front opening edges together and stitch. (e)

Position the lining dress on the fabric dress, wrong sides facing, and pin. Pin the neckline and press. Pin lining on the armhole edges. Pin the lining on the zipper strips and sew by hand. (f)

Step 12



ARMHOLES / BIAS STRIPS

Fold the bias strips in half, wrong sides facing. Press.

Pin the bias strips on the armhole edge above the sleeve placket, right sides facing. The open edges are positioned on the allowances. Turn the strip ends and topstitch narrowly. Trim allowances and snip in. (a)

Turn the bias strips inside and pin. Press the edge. Fold the placket inside the armhole and press. Topstitch the armhole narrowly, enclosing the bias strip. OR sew the bias strip by hand on the lining. (b)

HEMLINE

Neaten the hemline, fold inside and press. Sew the hemline by hand. ©

LINING HEMLINE

Turn the hemline, fold again and pin. Topstitch the hemline narrowly. The lining dress needs to be slightly shorter than the fabric dress (1/2" or 1.5 cm) to prevent the lining from being visible later on. (d)

BurdaStyle

Kristen