

Fatina Puff Dress Variation

By: burdastyle

<http://www.burdastyle.com/projects/fatina-puff-dress-variation>



We have added a pattern with a puff sleeve and lace yokes so you can make your Fatina Dress into a beautiful evening dress. Have fun!

Materials

Taffeta, with an invisible zipper.

Step 1

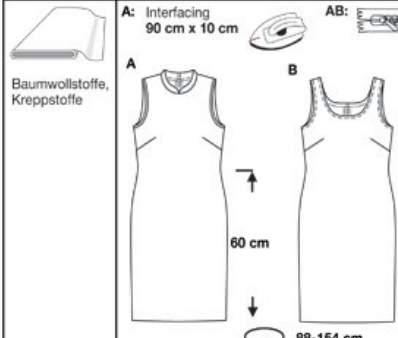
**burda Download-Pattern
6051- Instructions**

●●□□
easy körpernah

burda sizes		56 ins / 140 cm													
		34	36	38	40	42	44	46	48	50	52	54	56	58	60
A	yds	1 1/4	1 1/4	1 1/4	1 1/4	1 1/4	1 1/4	1 1/4	1 1/4	2 1/4	2 1/4	2 1/4	2 1/4	2 1/4	2 1/4
	m	1,35	1,35	1,35	1,65	1,65	1,65	1,65	1,65	2,15	2,15	2,15	2,15	2,25	2,25
B	yds	1 1/4	1 1/4	1 1/4	2	2	2	2 1/4	2 1/4	2 1/4	2 1/4	2 1/4	2 1/4	2 1/4	2 1/4
	m	1,65	1,70	1,70	1,75	1,75	1,80	2,25	2,30	2,30	2,30	2,30	2,35	2,35	2,35

→ with nap * without nap

A: Interfacing
90 cm x 10 cm

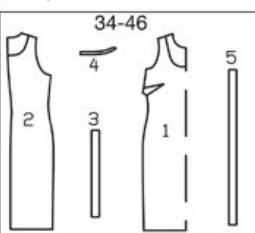


AB:

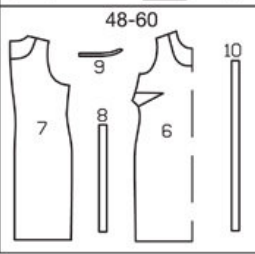
A: 34-38: 60 cm;
40-46: 65 cm;
48-60: 70 cm
B: 34-38: 50 cm;
40-46: 55 cm;
48-60: 60 cm

Patternpieces:

34-46



48-60



Baumwollstoffe, Kreppstoffe

PATTERN

Sizes 2 to 14 (EU 34 to 46)

A 1 Front piece 1x

A 2 Back piece 2x

Lace Yoke Back

Lace Yoke Front

Puff Sleeve

Cuff

Fabrics: Cotton fabric, crepe fabric

Step 2



The patterns can be printed out at the copy shop. If you decide to print them at home, follow the instructions: Paper cut for ANSI A (German DIN A4) prints:
 The patterns are printed out for sizes 2 to 14 (EU 34 to 46) on 24 sheets / for sizes 16 to 28 (EU 48 to 60) on 30 sheets with a thin frame. Wait until all sheets are printed out. Arrange the sheets so that they fit together (see additional page with the overview of the prints). Fold the single sheets on the upper and right edge along the thin frame lines. Begin with the left lower sheet and then tape the frame lines together precisely.

Step 3



ADJUST PATTERN SIZES

Select your size according to the Burda-dimension table: dresses, blouses, jackets and coats according to the bust size, trousers and skirts according to the hip width. Change the pattern to fit your measurements if they deviate from the Burda-size chart. Cut out the pattern according to your size.
 Sizes 2 to 14 (EU 34 to 46):

A: Pattern pieces 1 and 4, Lace Yoke Back, Lace Yoke Front, Puff Sleeve, Cuff

Refer to our “ Adjust patterns for mixed sizes” technique

LENGTHENING OR SHORTENING THE PATTERN PIECES

Our pattern is calculated for a height of 5’ 6” (168 cm). If you are taller or shorter, you can adjust the pattern pieces along the lines marked “lengthen or shorten here”. This way the proper fit is maintained.

Always adjust all pattern pieces along the same line to the same degree.

How to lengthen and shorten pattern pieces:

Cut the pattern pieces along the marked lines

To lengthen, slide the two halves of the pattern piece as far apart as necessary.

To shorten, overlap the two halves of the pattern piece as far as necessary. Blend the side edges.

Step 4



CUTTING OUT

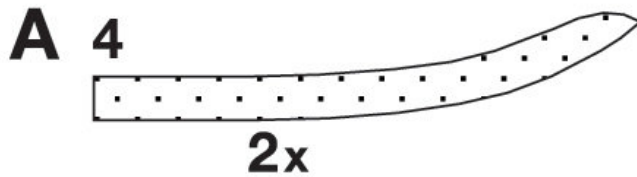
FOLD () means: Cut on the fold, the fold being the center of the pattern piece, but never a cut edge or seam. The piece should be cut double, with the fold line forming the center line. Pattern pieces that are outlined with a broken line in the cutting diagrams are to be placed face down on the fabric. The cutting diagrams on the pattern sheet show how the pattern pieces should be placed on the fabric.

The cutting diagrams show the placement of the pattern on the fabric.

For a single layer of fabric, the pattern pieces are pinned to the right side. For double layers of fabric, the right sides are facing and the pattern pieces are pinned to the wrong side. The pattern pieces that are shown extending over the fold of the fabric in the cutting diagram should be cut last from a single layer of fabric .

Step 5

INTERFACING



SEAM AND HEMLINE ALLOWANCES are included on an average:

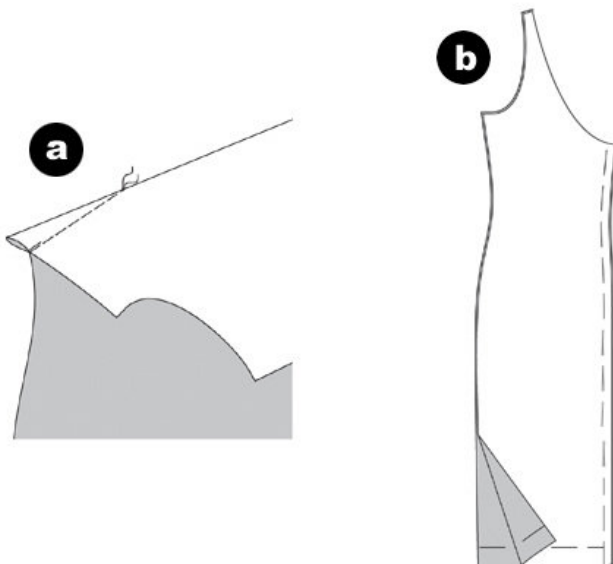
1 5/8" 8" (4 cm) for hem, 5/8" (1.5 cm) for all edges and stitches. Using BURDA copying paper, transfer the lines and signs of the pattern onto the wrong side of the fabric. Instructions can be found in the packaging.

Sewing

While sewing, the right sides of the fabric are facing.

Transfer all lines of the pattern onto the right side of the fabric using basting stitches. The seam numbers show how the pieces will be sewn together. The number after the slash is representative of the sizes 16 to 28 (EU 48 to 60).

Step 7



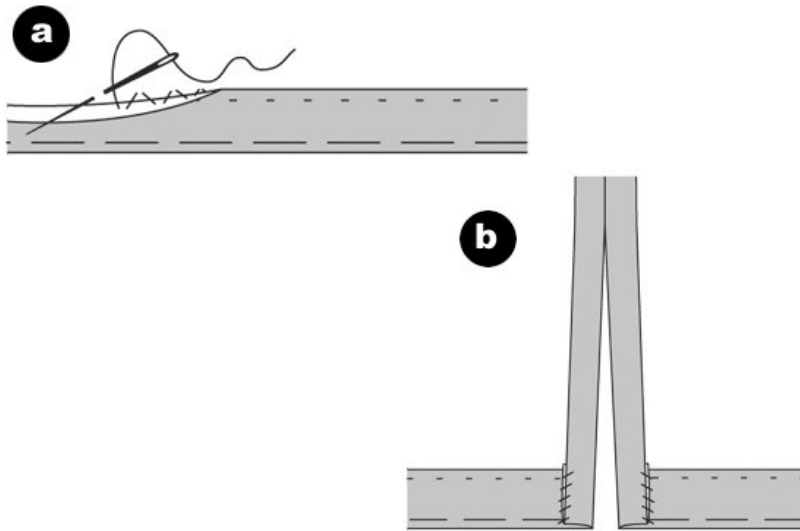
DRESS
BUST DARTS

Pin the bust darts and stitch to a point. Knot threads. Press the darts downwards. (a)

CENTER BACK SEAM / SLIT

Position the back pieces together, right sides facing. Pin the center seam. Stitch the center seam between the slit signs. Make sure you sew all the way from the slit to the yoke since the zipper is not in the back in this variation. Secure seam ends. Keep the slit pinned. Neaten allowances and press apart. Remove the pins from the slit. (b)

Step 13

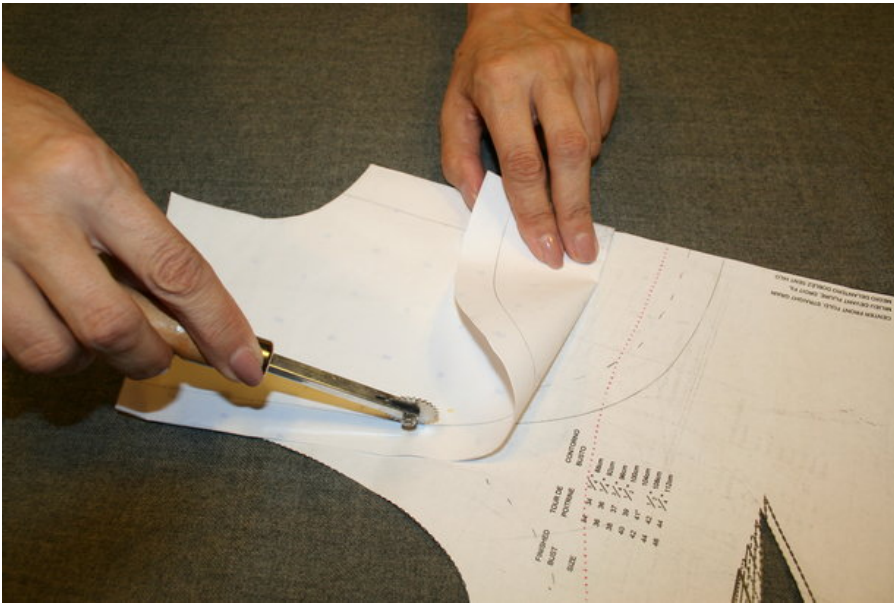


AB
HEMLINE / SLIT

Fold the slit allowances.

Neaten hemline, fold inside and press. Sew the hemline by hand (a). Turn the slit allowances inside and sew onto the hemline (b).

Step 6



MODIFY DRESS PATTERN

Once you have all you pattern pieces printed and cut, take the dress front piece and the front yoke and overlay them using the collar and shoulder lines for reference.

Use a tracing wheel to mark the sewing line from the yoke to the dress pattern and add 5/8 inch seam allowance. This will be your cutting line.

Follow the same steps for the dress back piece using the back yoke.

Step 8



SIDE SEAMS

Position the front and back pieces together, right sides facing. Pin the side seams (seam numbers 3 / 6) and stitch on right side. Neaten allowances and press apart. (b) For the left side sew seam from armhole down 1 1/2 inches and leave a 12 inch opening for the zipper. Continue side seam until hem.

ZIPPER

Position the zipper in the left side seam opening so that the little teeth are hidden. Fold the zipper strip ends inside. Stitch the zipper using a zipper foot and press it.

Step 9



YOKE

Cut yoke pattern pieces in lace.

Pin back yoke on dress back side and sew. Pin front yoke on dress front side and sew. Do a topstitch around sewing line on the right side.

SHOULDER SEAMS

Position the front and back pieces together, right sides facing. Pin shoulder seams (seam numbers 1 / 4) and stitch. Use French seam for lace. Neaten allowances and press apart.

NECKLINE

Fold lace \hat{A} $\frac{1}{4}$ inch and stitch close to edge. Turn again \hat{A} $\frac{1}{4}$ inch to cover the edge and baste. Finish with invisible hand stitch.

Step 10



SLEEVE

Mark pleat marks on the fabric. Pin pleats on armhole line as marked on the pattern. Fix it with a wide stitch. Follow the same steps for the bottom of the sleeve. Sew side seams, right sides facing. Press seams.

Step 11



CUFF

Sew side seam, right sides facing. Open seams and press. Fold the cuff in half and press. Unfold cuff and put inside sleeve, right sides facing, to match the raw edges. Pin and make seam all around. Make sure you are just sewing one edge of your cuff.

Step 12



Turn cuff inside out and turn the edge not attached to the sleeve for \hat{A} ½ inch. Fold the cuff over so the unfinished edge is on top of the hem of the sleeve. Pin and stitch in the ditch.

ARMHOLE

Put together sleeve to the armhole, right sides facing. Pin and sew.

BurdaStyle

Fatina Puff Dress Variation