

Wenlan Blouse, Design Twinkle by Wenlan

By: burdastyle

<http://www.burdastyle.com/projects/wenlan-blouse-design-twinkle->



If you were waiting for the blouse to go with last week's Twinkle by Wenlan skirt pattern, here it is!! The blouse pattern is another design by Twinkle, however it is not available in the book Twinkle Sews. It is a special for our members offered here on BurdaStyle by Twinkle by Wenlan This blouse not only works perfectly with the skirt, it also looks great over pants or leggings. This pattern is following the size chart of Twinkle by Wenlan, which you can find here on step 5 of the instructions.. Find out more about Twinkle by Wenlan Purchase the book here

Materials

Chiffon, Charmeuse, Silk, Georgette; Buttons,

Step 1

Materials:

Chiffon, Charmeuse,

Lining

Step1 Cutting Ticket

- 1-Front top panel 1x
- 2-Back top panel 2x
- 3-Top yoke 1x
- 4-Top collar 1x
- 5-Under collar 1x
- 6-Sleeves 2x
- 7-Tie 2x
- 8-Button loops strap 1x (no pattern, cut 9 $\frac{3}{4}$ inch x 1 inch)

Lining

- 9-Front top panel 1x
- 10- Back top panel 2x

Fabrics: Chiffon, Charmeuse, silk, crepe fabric

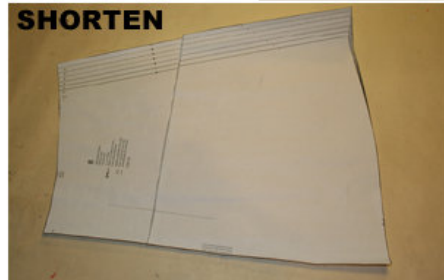
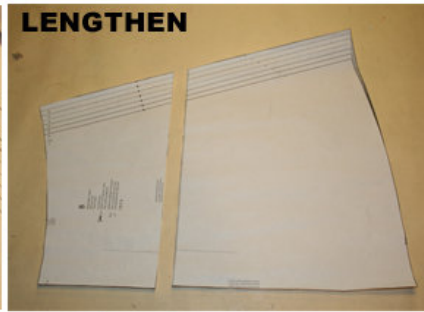
3 buttons

Step 2



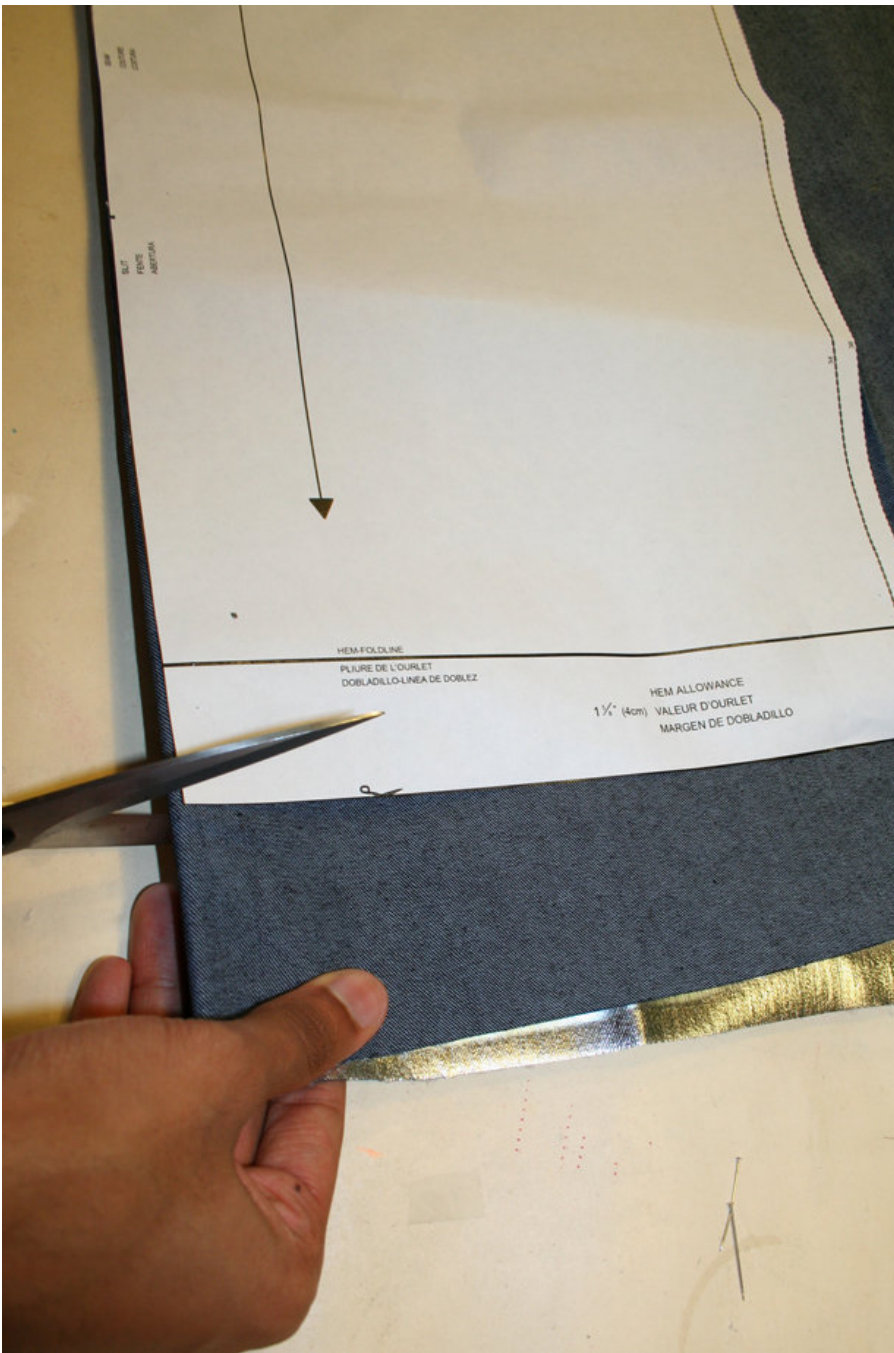
The patterns are printed out in letter sized pages within a thin frame. Wait until all sheets are printed out. Arrange the sheets so that they fit together (see additional page with the overview of the prints) following the markers. Fold the single sheets on the upper and right edge along the thin frame lines. Begin with the left lower sheet and then tape the frame lines together precisely.

Step 3



ADJUST PATTERN SIZES Select your size according to the Burda-dimension table: dresses, blouses, jackets and coats according to the bust size, trousers and skirts according to the hip width. Change the pattern to fit your measurements if they deviate from the Burda-size chart. Cut out the pattern according to your size. Sizes 2 to 14 (EU 34 to 46): A: Pattern pieces 1 and 4, Lace Yoke Back, Lace Yoke Front, Puff Sleeve, Cuff Refer to our \hat{a} Adjust patterns for mixed sizes \hat{a} technique **LENGTHENING OR SHORTENING THE PATTERN PIECES** Our pattern is calculated for a height of 5 \hat{a} 6 \hat{a} (168 cm). If you are taller or shorter, you can adjust the pattern pieces along the lines marked \hat{a} lengthen or shorten here \hat{a} . This way the proper fit is maintained. Always adjust all pattern pieces along the same line to the same degree. **How to lengthen and shorten pattern pieces:** Cut the pattern pieces along the marked lines To lengthen, slide the two halves of the pattern piece as far apart as necessary. To shorten, overlap the two halves of the pattern piece as far as necessary. Blend the side edges.

Step 4



CUTTING OUT FOLD (â' â' â' â') means: Cut on the fold, the fold being the center of the pattern piece, but never a cut edge or seam. The piece should be cut double, with the fold line forming the center line. Pattern pieces that are outlined with a broken line in the cutting diagrams are to be placed face down on the fabric. The cutting diagrams on the pattern sheet show how the pattern pieces should be placed on the fabric. The cutting diagrams show the placement of the pattern on the fabric. For a single layer of fabric, the pattern pieces are pinned to the right side. For double layers of fabric, the right sides are facing and the pattern pieces are pinned to the wrong side. The pattern pieces that are shown extending over the fold of the fabric in the cutting diagram should be cut last from a single layer of fabric .

Step 5

Wovens

Size	Bust	Natural Waist	Hip
0	31	25	35
2	32	26	36
4	33	27	37
6	34	28	38
8	35	29	39
10	36	30	40

Knits

Size	Bust	Natural Waist	Hip
XS	31	25	35
S	33	27	37
M	35	29	39
L	37	31	41

Select the pattern size according to your hip measurement plus 2"â' 4" (5cmâ' 10cm) ease. Lay out the pattern pieces on the corresponding fabrics, fitting them on the fabric however works for you, and cut. Donâ' t forget to watch the grain lines.

Step 6 — Back



Use French seams throughout to make a neat finish to your garment, this also prevents the fabric fraying. (See related techniques)

Position two back panels (self and lining) together, right sides facing. Pin side seams to set in place. Pin back opening mark and sew back opening. Trim allowance.

Neaten the back opening edges:

Turn the allowances of the side edges inside and press, fold again and pin. Top stitch allowances narrowly onto the lining.

Step 7



Lining

Gather the front section of lining as marked by running two rows of stitches. Sew sides of front and back lining together.

Step 8



Front

Gather center section of the front self panel by running two rows of stitches across and pulling to the marked length.

Attach the front panel to the back panel by attaching sides

Place the yoke right sides facing on top of the self and place the lining piece on top to sandwich the yoke in between self and lining. Pin yoke line and stitch. Trim allowances and topstitch to the lining.

Sew the shoulders together.

Step 9



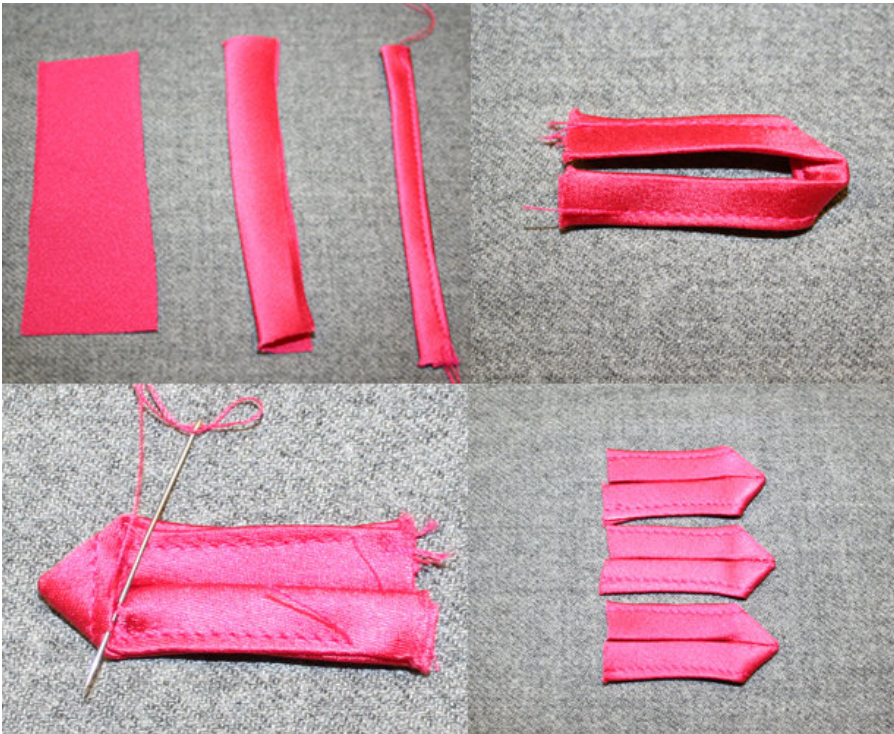
Ties

Fold each tie right sides facing, stitch around as indicated on the drawing leaving one side open.

Neaten the edges, turn and iron flat.

Repeat procedure for second tie.

Step 10



Button loops

Fold the rectangle in the length. Fold seam allowance of \hat{A} ¼ inch and topstitch along the length. Cut in three equal pieces. Fold and stitch as illustrated.

Form a loop; secure stitch in the back of the loop end as shown.

Step 11



Collar

Gather top collar self on each side to match the lining dimension of 2 inches.
Place self, right sides facing, onto the lining. Pin, stitch and press seam open and topstitch the seam allowance to the lining.
Turn work and lightly iron back of collar.

Step 13



Sleeves

To hem the edge of the sleeve neatly use the zig-zag baby hem technique. (see related techniques)
Attach both sleeves to the armhole and pin. Cut a bias strip of the self and place it on the sleeve along the armhole and sew. Trim seam allowance, fold bias once and then fold to the inside. Finish by hand stitch.

Step 14

Finish work

Hem the bottom of both lining and main section. Fix buttons

Step 12



Neckline

Place the collar on the neckline, tucking in the ties as indicated on the pattern. Stitch and turn work.

Place the collar on the neckline, right sides facing, tucking in the ties as indicated on the pattern. Pin and sew the chiffon layers together of the collar to the neckline. Trim the seam allowance. Fold the seam allowance of the lining up and hand stitch the lining to the neckline.

BurdaStyle

Wenlan Blouse, Design Twinkle by Wenlan