

Louisa

By: burdastyle

<http://www.burdastyle.com/projects/louisa>



The Louisa vest is an adorable separate to add to your necessities rack. We made ours in navy corduroy & leather and are in love. A simple layering piece with princess seams you can dress up or down- any time of the year.

Materials

Corduroy, leather, leather covered buttons

Step 1 — Pattern



PATTERN

A B 1 Center front piece 2x

A 2 Side front piece 2x

A 3 Center back piece 1x (A lining)

A 4 Side back piece A 4x (lining), B 2x

A 5 Front placket 2x

A 6 Strip 2x (A lining)

7 Collar 4x

A 8 Center front piece 2x (lining)

A 9 Center back piece 1x (lining)

Fabrics: Light wool fabrics

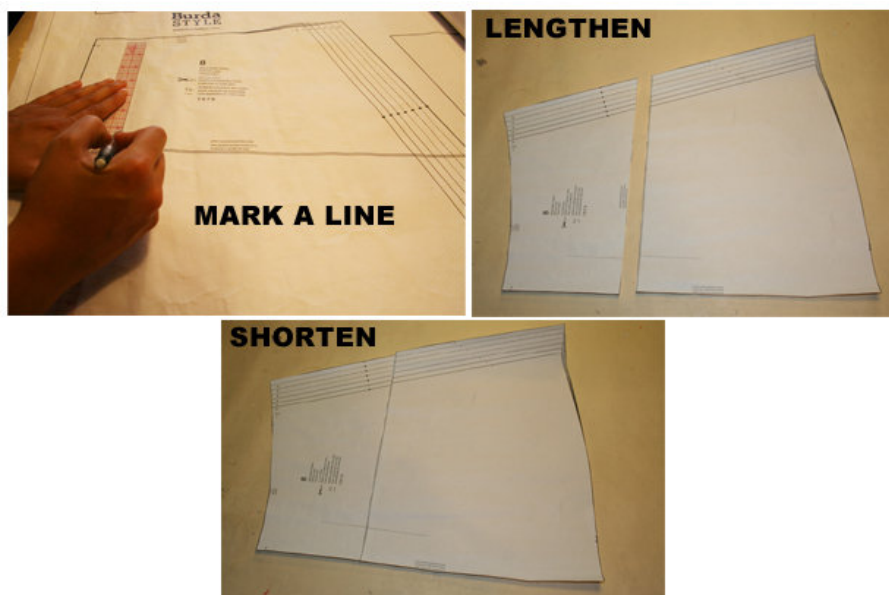
Vest A with silk lining back

The patterns can be printed out at the copy shop. If you decide to print them at home, follow the instructions:

Paper cut for ANSI A (German DIN A4) prints:

The patterns are printed out on 20 sheets with a thin frame. Wait until all sheets are printed out. Arrange the sheets so that they fit together (see additional page with the overview of the prints). Fold the single sheets on the upper and right edge along the thin frame lines. Begin with the left lower sheet and then tape the frame lines together precisely.

Step 2 — ADJUST PATTERN SIZES



Select your size according to the Burda-dimension table: dresses, blouses, jackets and coats according to the bust size, trousers and skirts according to the hip width. Change the pattern to fit your measurements if they deviate from the Burda-size chart. Cut out the pattern pieces according to your size.

Sizes 2 to 12 (EU 34 to 44): On piece 1, mark the same distance between the top edge and top button hole. Do the same for all sizes. The bottom button wholes are the same for all sizes. The middle button whole mark in between the top and bottom buttons.

Refer to our [Adjust patterns for mixed sizes](#) technique.

LENGTHENING OR SHORTENING THE PATTERN PIECES

Our pattern is calculated for a height of 5'6" (168 cm). If you are taller or shorter, you can adjust the pattern pieces along the lines marked "lengthen or shorten here". This way the proper fit is maintained. Always adjust all pattern pieces along the same line to the same degree.

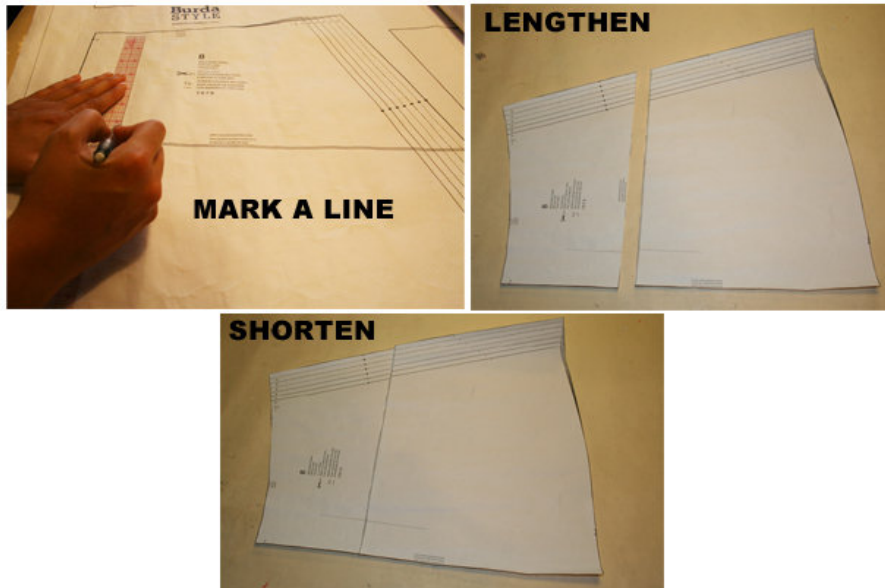
How to lengthen and shorten pattern pieces:

Cut the pattern pieces along the marked lines

To lengthen, slide the two halves of the pattern piece as far apart as necessary.

To shorten, overlap the two halves of the pattern piece as far as necessary. Blend the side edges.

Step 3 — CUTTING OUT

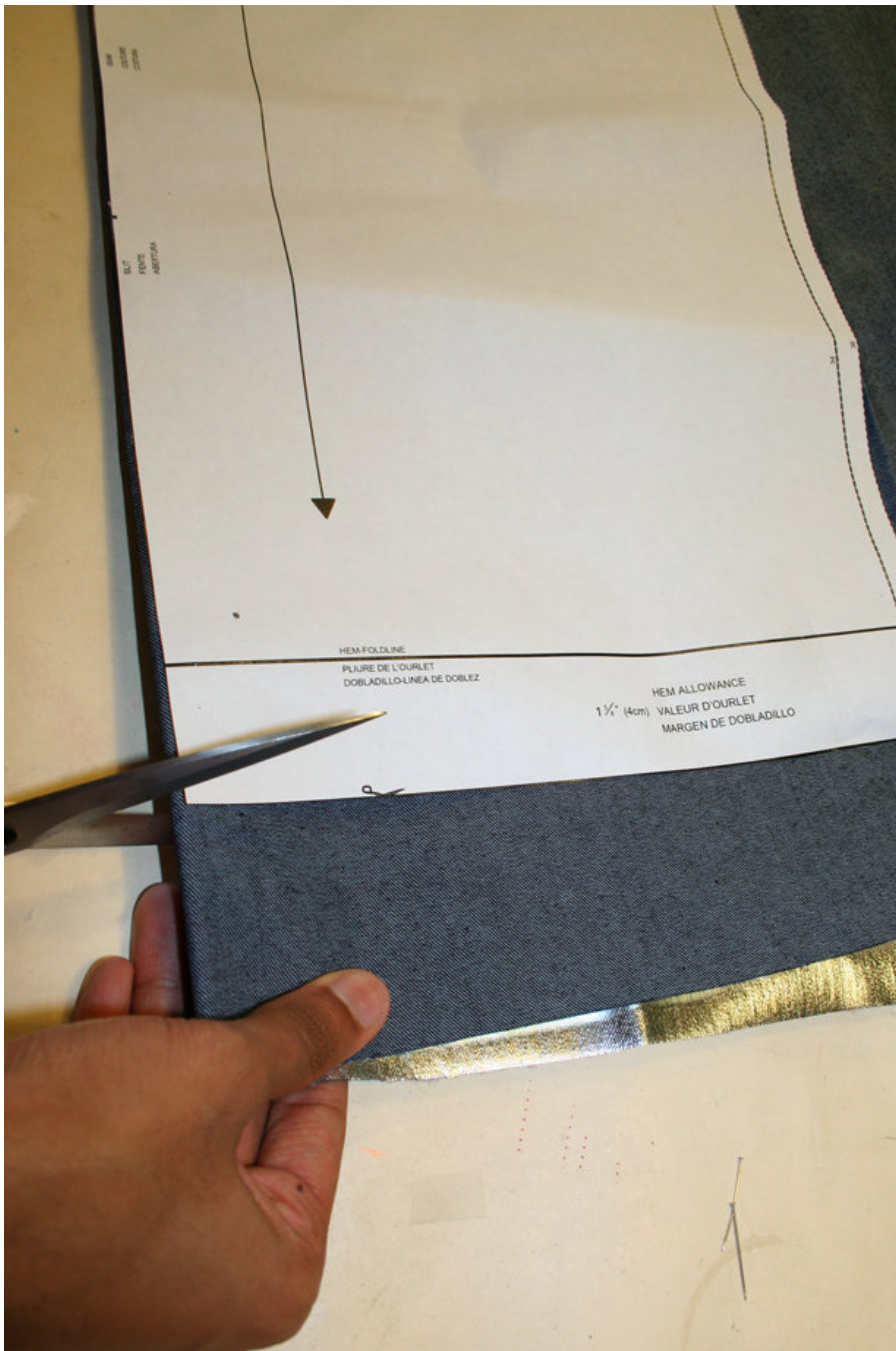


FOLD (— — —) means: Cut on the fold, the fold being the center of the pattern piece, but never a cut edge or seam. The piece should be cut double, with the fold line forming the center line. Pattern pieces that are outlined with a broken line in the cutting diagrams are to be placed face down on the fabric. The cutting diagrams on the pattern sheet show how the pattern pieces should be placed on the fabric.

The cutting diagrams show the placement of the pattern on the fabric.

For a single layer of fabric, the pattern pieces are pinned to the right side. For double layers of fabric, the right sides are facing and the pattern pieces are pinned to the wrong side. The pattern pieces that are shown extending over the fold of the fabric in the cutting diagram should be cut last from a single layer of fabric.

Step 4 — SEAM AND HEMLINE ALLOWANCES



SEAM AND HEMLINE ALLOWANCES are included on an average:

1 5/8" (4 cm) for hem, 5/8" (1.5 cm) for all edges and stitches. Using BURDA copying paper, transfer the lines and signs of the pattern onto the wrong side of the fabric. Instructions can be found in the packaging.

Vest A with silk lining back: Cut out the lining according to the pattern pieces 2, 3, 4, 6, 8 and 9.

B: Cut out the lining according to pattern pieces 2, 4, 8 and 9. See cutting diagram.

INTERFACING

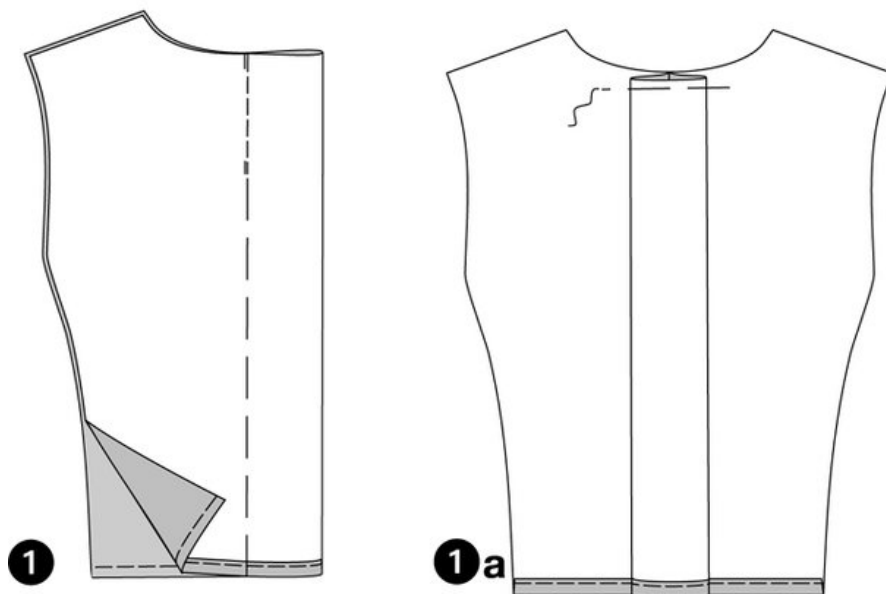
Cut out the interfacing pieces and press onto the wrong side of the fabric.

Sewing

While sewing, the right sides of the fabric are facing.

Transfer all lines of the pattern onto the right side of the fabric using chalk.

Step 5 — VEST B



VEST B

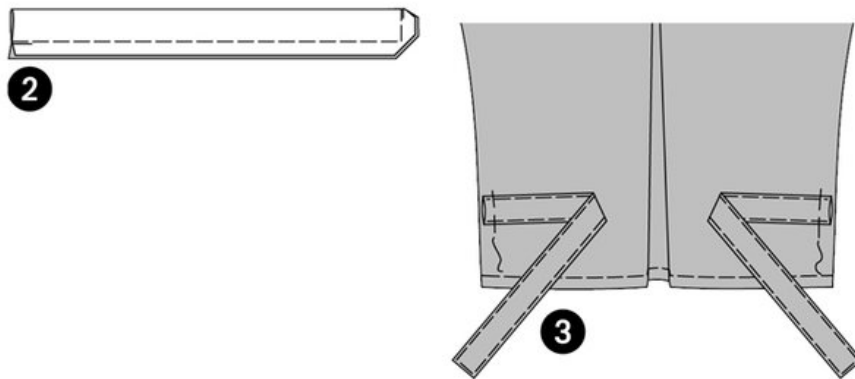
The images show the vest with a back made of vest fabric. Vest A has a lining back.

BACK PIECE / BOX PLEAT

At the center back piece, fold the hemline inside and press. Fold again and pin. Topstitch the hemline narrowly.

Fold the center back piece, right sides facing. Position the pleat lines together. Stitch the top 4" (10 cm) of the pleat together. Secure seam ends. Keep the pleat pinned. Press the pleat so that the seam line meets the center back (box pleat) (a). Pin the pleat at the top (b). Remove the pins.

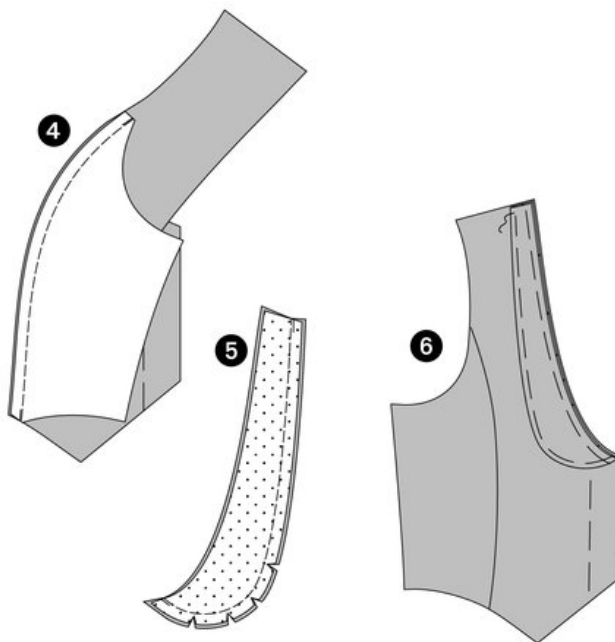
Step 6 — STRIPS



Fold the strips along the FOLD LINE, right sides facing. Stitch the edges together. Trim allowances and cut the corners. (a)

Position the strips between the cross lines onto the center back piece. Pin. (b)

Step 7 — PRINCESS SEAMS & COLLAR



PRINCESS SEAMS

Position the side and center front pieces together, right sides facing. Pin the princess seams (seam number 1) and stitch. Trim allowances and press apart. (a)

Stitch the back princess seams (seam number 2).

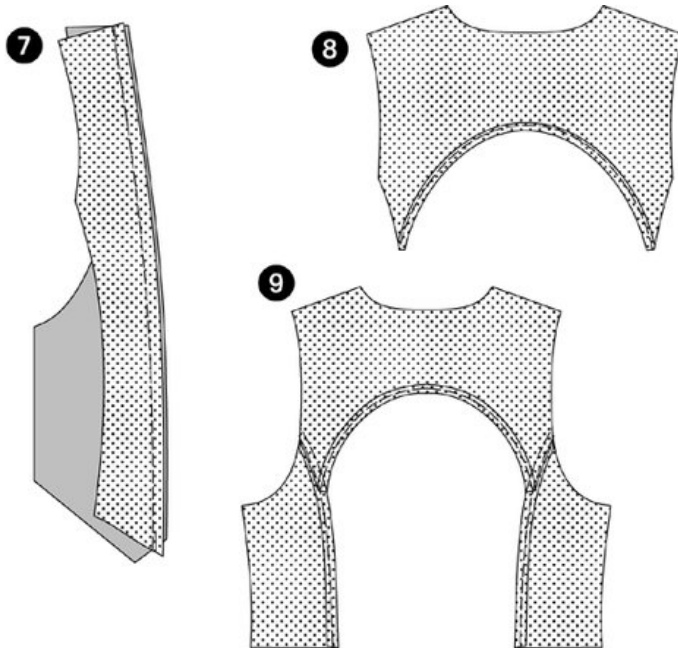
Important: The allowances of the side back piece is overlapping at the bottom. Trim allowances, neaten and press inside the side back piece.

COLLAR

Position an interfaced and a non-interfaced collar piece together, right sides facing. Pin the edges together and stitch. Trim allowances and snip in. Turn the collar inside out. Pin the edges and press. Pin the raw edges together. (b)

Position the collar pieces on the front piece. Pin along the neckline and shoulder edges (seam number 4). ©

Step 8 — AB SIDE SEAMS



AB SIDE SEAMS

Position the front and back pieces together, right sides facing. Stitch side seams (seam number 3). Press the allowances apart.

LINING

Position the center front lining pieces on the front plackets (seam number 5), right sides facing. Stitch. Trim allowances and press inside the lining.(a)

Stitch the front princess seams on the lining piece.

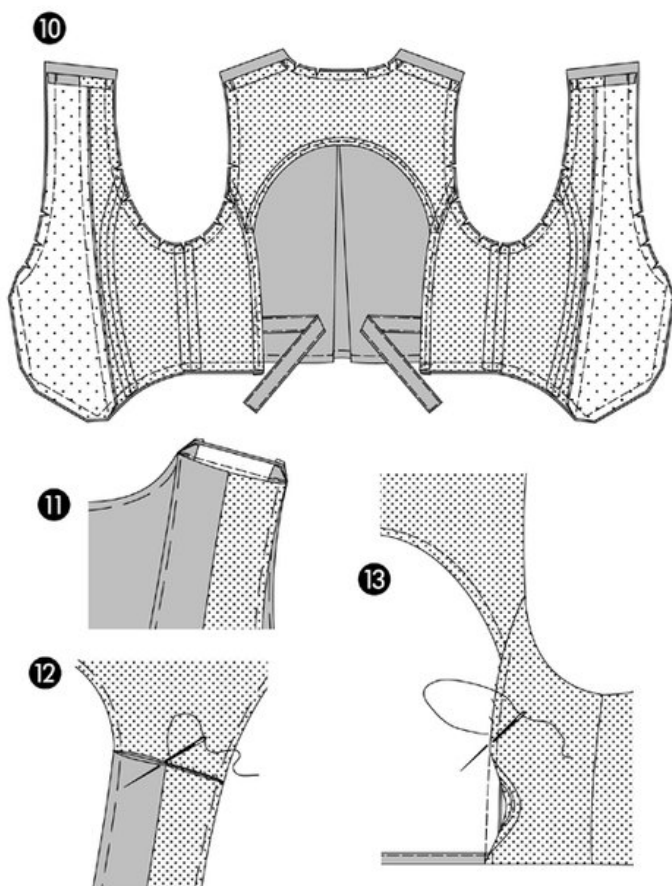
At the center back lining piece, trim the allowances of the bottom edge. Neaten and press. Topstitch the edge 1/4" (0.5 cm). (b)

Position the side back piece and the center back lining piece (seam number 2) together, right sides facing. Trim allowances, neaten and press inside the side back piece. Trim the allowance of the side back pieces and neaten. Turn the allowance and press. Stitch the edges 1/4" (0.5 cm) wide. ©

Stitch the side seams (seam number 3). Press allowances apart.

On front and back piece (lining/plackets), fold the allowances of the shoulder seams inside and press.

Step 9 — DOUBLE VEST WITH LINING



DOUBLE VEST WITH LINING

Position the lining onto the vest, right sides facing and side seams meeting. Position the armhole edges, back neckline edges, and front and bottom edges together. Stitch. Enclose the collar. Trim allowances, snip in the curves and cut the corners. Turn the vest inside out. (a)

SHOULDER SEAMS

Position the front and back pieces together, right sides facing. Stitch shoulder seams (seam number 6). Bias cut the allowances at the corners. Push the allowances inside and press apart. (b)

Position the edges of the lining piece along the shoulder seam line together (seam number 7). Sew by hand. Pin all vest edges and press. ©

Position the side edges of the back lining pieces on the back princess seams. Stitch by hand. Work **BUTTON HOLES** into the right front piece. Sew **BUTTONS** onto the center front of the left front piece. (d)

BurdaStyle

Louisa