

04/2010 Cargo Pants

By: burda style magazine

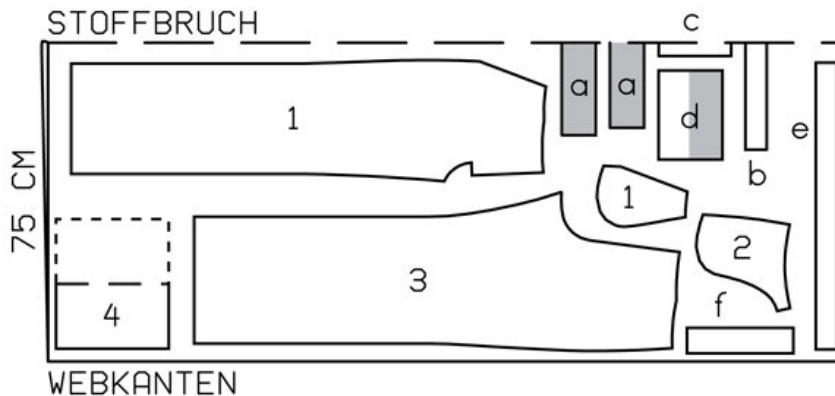
<http://www.burdastyle.com/projects/042010-cargo-pants>

Cargo Pants burda style magazine patterns FAQ

Materials

poplin

Step 1 — Preparation



118 36-40

Trace pattern pieces from the pattern sheet. Follow lines and details for style 118. Lengthen pieces 1 and 3 as indicated. Trace the pocket piece from -piece 1 as a separate pattern piece.

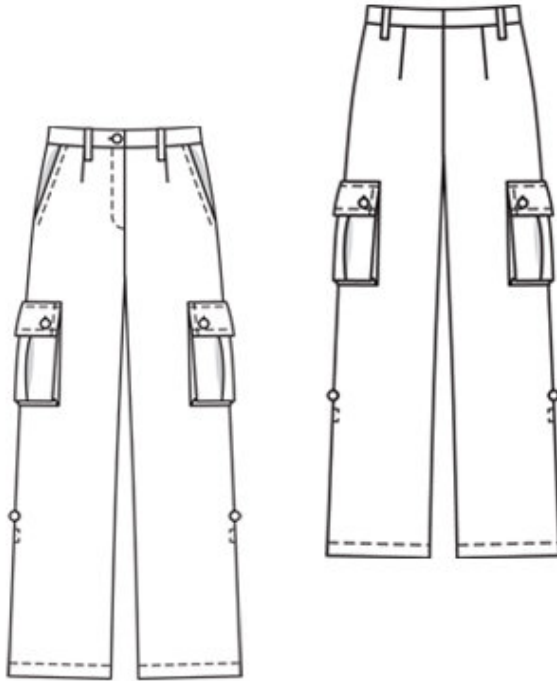
The stitching line at the front fly opening is marked for size 36. For sizes 38 — 44, remark the stitching lines the same distance from centre front as for size 36, noting length of opening. The joining line for the tab on pieces 1 and 3 is marked for size 36. Remark the joining line for the other sizes according to the size lines.

Seam and hem allowances:

Seams and edges 1.5 cm (5/8 in), hem 4 cm (15/8 ins).

Note: The waistband of this style is cut for a loose fit to allow the trousers to slip below the waist during wear-ing. If you prefer a -regular fit, make the pants and waistband tighter.

Step 2 — Cutting out



1 front trouser piece 2x

1 pocket piece 2x

2 side hip yoke with

1 integrated pocket piece 2x

3 back trouser piece 2x

4 pocket, on a fold 2x

a) right waistband, 38 — 40 — 42 — 44 — 46 cm (15 — 15³/₄ — 16¹/₂ — 17¹/₄ — 18¹/₈ ins) long and left waistband with 3.5 cm (1¹/₂ in) underlap, 41.5 — 43.5 — 45.5 — 47.5 — 49.5 cm (16³/₈ — 17¹/₈ — 18 — 18³/₄ — 19¹/₂ ins) long, each 8 cm (3¹/₄ ins) wide, finished width 4 cm (1⁵/₈ ins),

b) 4 belt carriers, a total of 50 cm (20 ins) long, 5 cm (2 ins) wide (incl. allowance),

c) left underlap piece, 17 — 17 — 17 — 19 — 19 cm (6³/₄ — 6³/₄ — 6³/₄ — 7¹/₂ — 7¹/₂ ins) long, 6 cm (2¹/₂ ins) wide, -finished width 3 cm (1¹/₄ ins),

d) 2 flaps, 21 cm (8³/₈ ins) long, 15 cm (6 ins) wide, finished width 7.5 cm (3 ins),

e) 2 side fold pieces for pockets, 64.5 cm (25¹/₂ ins) long, 2 cm (3/4 in) -wide,

f) 2 tabs, 25 cm (10 ins) long, 6 cm (2¹/₂ ins) wide, finished width 3 cm (1¹/₄ ins).

Interfacing: See pattern layout.

Step 3 — Stretch seam edges

Stretch inside leg seam edges of back trouser pieces above marking. Lay back trouser pieces right sides facing. Stretch inside leg edges above marking by steam-pressing or pressing under a damp cloth until they match corresponding edges on front trouser pieces.

Step 4 — Stitch Darts

Stitch darts. Press toward centre.

Step 5 — Hip Yoke Pockets

Stitch pocket -pieces right sides together with -pocket opening edges of front trouser pieces. Turn pocket pieces to inside. Topstitch close to pocket opening edges and 1 cm (3/8 in) from these edges. Pin pocket opening edges to side hip -yokes at placement lines. Stitch -pocket edges together. Baste pocket -pieces to wrong side of front trouser pieces, first trimming away allowance of right pocket piece at centre front.

Step 6 — Side Seams

Stitch side seams. Press seams open.

Step 7 — Bellows Pockets

Lay folds in arrow direction and press. Baste to upper and lower edge of pocket. Stitch close to fold edges of self-facings. Lay self-facing on upper edge of each -pocket to inside and stitch 3 cm (1 1/4 ins) -from fold edge. Press allowance on one length-wise edge of each side fold piece to inside. Stitch other lengthwise edges of side fold pieces right sides together with side and lower edges of -pockets, clipping allowance of fold pieces at bottom corners of pockets. Trim seam allowances to 5 mm (3/16 in) wide. Turn side fold pieces to inside and press pocket edges. Unfold side piece at upper edge of pocket out flat again. Press allowance on upper edge to inside. Lay side piece of pocket to inside again. Topstitch close to edges of -pockets. Lay pressed inside edge of each side pocket piece under outer edges of pocket and press. Pin side fold pieces to trousers at placement lines and edgestitch in place. Stitch folds, about 1.5 cm (5/8 in) long, at top corners of pockets.

Step 8 — Flaps

Fold flaps lengthwise, right side facing in. Stitch across ends. Turn flaps right side out and press. Top-stitch close to edges and 1 cm (3/8 in) from edges. Work two buttonholes in each flap, spaced 2 cm (3/4 in) from lower edge and 2.5 cm (1 in) from side edge. -Stitch flaps in place, 1.5 cm (5/8 in) above pockets. Press flaps down and stitch again next to joining -seams. Sew buttons to pockets to match buttonholes in flaps.

Step 9 — Side Tabs

Fold each tab in half length-wise, right side facing in. Stitch long edge and one narrow end closed. Turn tabs right side out and topstitch close to edges. Work a buttonhole in faced end of each tab. Lay tabs on inside of trouser legs, over side seams, as marked. Sew end of each tab in place with a square of -stitching. Sew button for tab to outside of trouser leg, over side seam, 2 cm (3/4 in) from tab attachment position.

Step 10 — Leg seams

Stitch inside leg seams. Stitch centre front seam from slit mark to inside leg seam.

Step 11 — Zip opening

Press self-facings on edges of openings to inside. Stitch on the right along centre front and stitch on the left 5 mm (3/16 in) before centre front. Stitch zip under left edge of opening (underlap), stitching close to teeth of zip. Pin opening closed, matching centres. Pin free zip tape to right facing, not catching skirt panel. Baste facing in place. Topstitch opening from upper edge to 3 cm (1 1/4 ins) before end, as marked. Fold underlap piece lengthwise, right side facing in. Stitch across bottom end. Turn right side out. Lay underlap under left edge of opening and pin to facing. Stitch facing to underlap, close to zip joining seam. Lay opening closed again and topstitch to the end, catching underlap.

Step 12 — Belt Carriers

Fold strip for belt carriers length-wise, right side facing in. Stitch 1.7 cm (a scant 3/4 in) from fold edge. Turn right side out. Topstitch close to edges. Cut into 4 pieces. Baste belt carriers to upper edge of trousers, placing one next to each front dart and 4 cm (15/8 ins) from each side seam in back.

Step 13 — Waistband and centre back seam

Stitch right and left waistband to ~~upper edge of trousers, stitching waistband~~ underlap to underlap piece. Press -seam allowances of join-ing seams onto waistband piece. Stitch centre back seam on trousers and waistband. Press allowances open from upper edge to beginning of curve. Do not press allowances flat along curve. Fold waistband length-wise, right side facing in and lay allow-ance on edge of inside waistband up at ends. Stitch ends of waistband closed and turn right side out. Turn in inside edge of waistband at ends and baste in place, about 5 cm (2 ins) long. Then lay waistband flat over joining seam without -turning in. Stitch from right side of garment in line of joining seam. Top-stitch close to edges of waistband. Work a buttonhole in right end of waistband.

Step 14 — Belt Carriers

Stitch across belt carriers 2 cm (3/4 in) below waistband joining seam. Lay belt carriers up, turn ends in, and stitch to upper edge of waistband.

Step 15 — Hem allowances

Press hem allowances to inside, turn in to 2 cm (3/4 in) wide, and stitch.

BurdaStyle

04/2010 Cargo Pants