

Celeste

By: burdastyle

<http://www.burdastyle.com/projects/celeste>



This dress is a variation of the Maddy top. As with the Maddy, you can play with different weights of fabric or patterns. The seams of the dress allow you to match up stripes or plaids in interesting ways. Go for a lighter fabric, but be aware that the gathering may be a bit harder to sew. Staystich the gathering before

attaching it to the next pattern piece to make things easier.

Materials

twill

Step 1

**burda Download-Pattern
Dress 8132 B - Instructions**

average **fitted**

Sizes	US	45 ins / 114 cm						55 ins / 140 cm							
		10	12	14	16	18	20	22	10	12	14	16	18	20	22
Fabric + lining, each	Est.	36	38	40	42	44	46	48	36	38	40	42	44	46	48
	yds	2 1/4	2 1/4	2 1/2	2 1/2	2 3/4	2 3/4	2 3/4	2	2	2 1/4	2 1/4	2 1/4	2 1/4	2 1/4
	m	2.25	2.25	2.30	2.30	2.35	2.35	2.60	1.80	1.80	1.85	1.85	1.90	2.00	2.00
		*	*	*	*	*	*	*	*	*	*	*	*	*	*

→ with nap

Interfacing
24" x 20" (60 cm x 50 cm)

Chiffon, georgette

24" (60 cm)

23 1/2" (60 cm)

79" - 89" (201-226 cm)

right side

wrong side

interfacing

lining

batting

Pattern pieces:

Pattern Pieces

- 1 Upper Front Piece 2x
- 2 Upper Side Front Piece 2x
- 3 Middle Front Piece 2x
- 4 Front Skirt Piece 1x
- 5 Inset 2x
- 6 Back Piece 2x
- 7 Back Skirt Piece 2x
- 8 Front Facing (Lining) 2x
- 9 Back Facing (Lining) 2x
- 10 Diagonal Strip (Lining) 2x
- 11 Stitching Pattern

Step 2



The patterns can be printed out at the copy shop. If you decide to print them at home, follow the instructions: Paper cut for ANSI A (German DIN A4) prints: The patterns are printed out on 24 sheets with a thin frame. Wait until all sheets are printed out. Arrange the sheets so that they fit together (see additional page with the overview of the prints). Fold the single sheets on the upper and right edge along the thin frame lines. Begin with the left lower sheet and then tape the frame lines together precisely.

Step 3



ADJUST PATTERN SIZES

Select your size according to the Burda-dimension table: dresses, blouses, jackets and coats according to the bust size, trousers and skirts according to the hip width. Change the pattern to fit your measurements if they deviate from the Burda-size chart. Cut out the pattern according to your size. Refer to our "Adjust patterns for mixed sizes" technique

LENGTHENING OR SHORTENING THE PATTERN PIECES

Our pattern is calculated for a height of 5â€ 6â€ (168 cm). If you are taller or shorter, you can adjust the pattern pieces along the lines marked “lengthen or shorten here”. This way the proper fit is maintained. Always adjust all pattern pieces along the same line to the same degree.

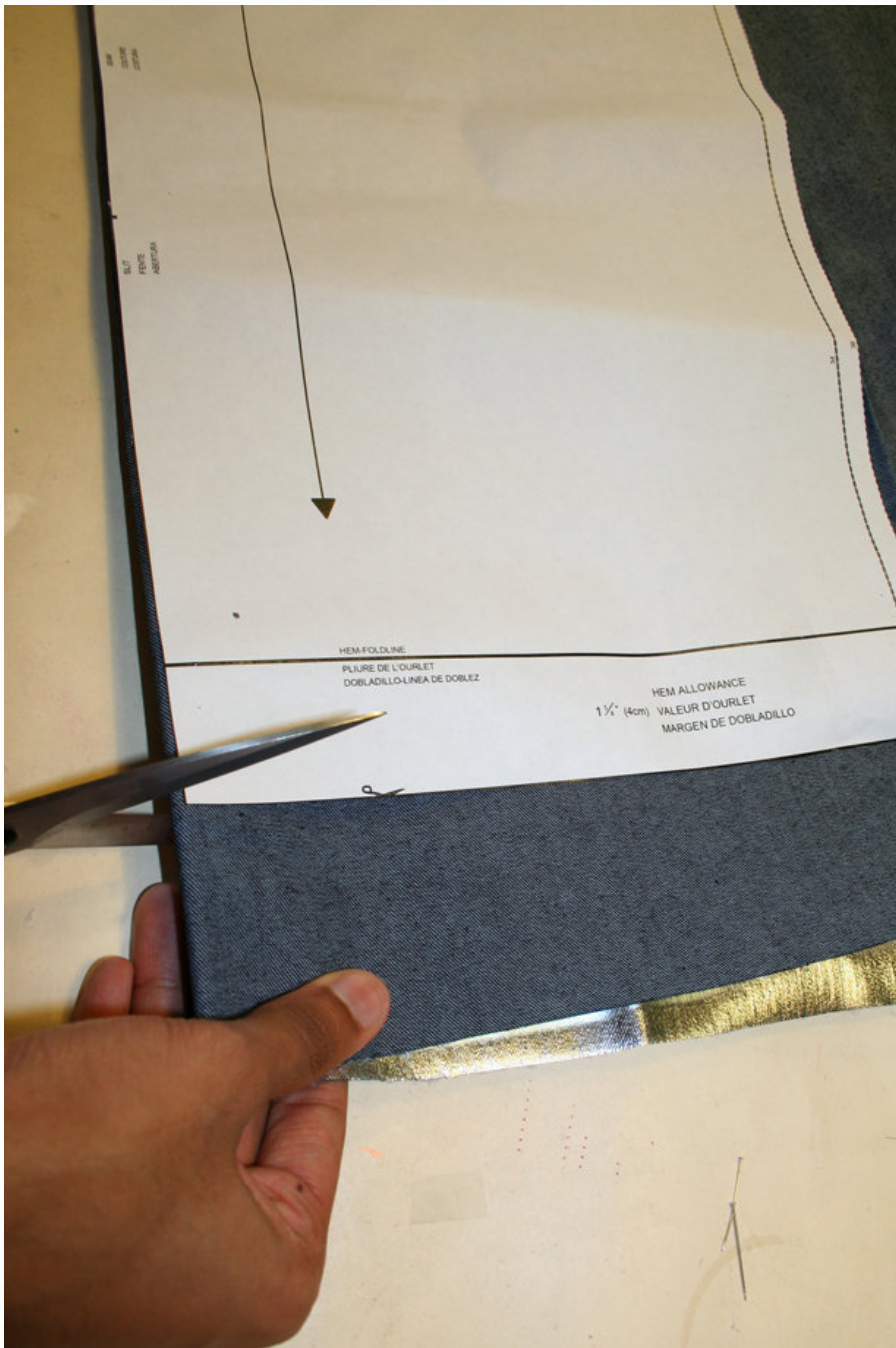
How to lengthen and shorten pattern pieces:

Cut the pattern pieces along the marked lines

To lengthen, slide the two halves of the pattern piece as far apart as necessary.

To shorten, overlap the two halves of the pattern piece as far as necessary. Blend the side edges.

Step 4



CUTTING OUT

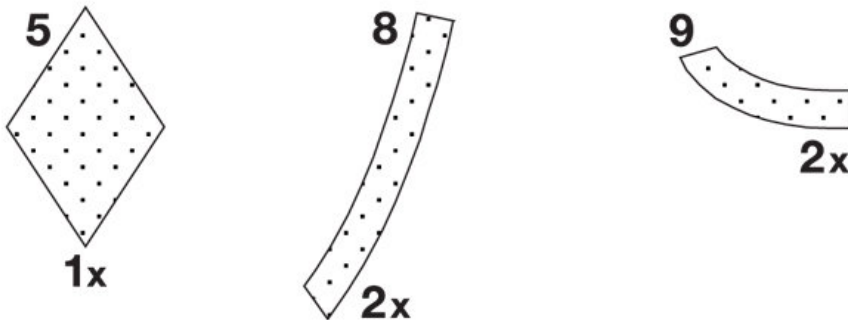
FOLD () means: Cut on the fold, the fold being the center of the pattern piece, but never a cut edge or seam. The piece should be cut double, with the fold line forming the center line. Pattern pieces that are outlined with a broken line in the cutting diagrams are to be placed face down on the fabric. The cutting diagrams on the pattern sheet show how the pattern pieces should be placed on the fabric.

The cutting diagrams show the placement of the pattern on the fabric.

For a single layer of fabric, the pattern pieces are pinned to the right side. For double layers of fabric, the right sides are facing and the pattern pieces are pinned to the wrong side. The pattern pieces that are shown extending over the fold of the fabric in the cutting diagram should be cut last from a single layer of fabric .

Step 5

INTERFACING



SEAM AND HEMLINE ALLOWANCES are included on an average:

1 5/8" - 8" (4 cm) for hem, 5/8" (1.5 cm) for all edges and stitches. Using BURDA copying paper, transfer the lines and signs of the pattern onto the wrong side of the fabric. Instructions can be found in the packaging.

Sewing

While sewing, the right sides of the fabric are facing.

Transfer all lines of the pattern onto the right side of the fabric using basting stitches.

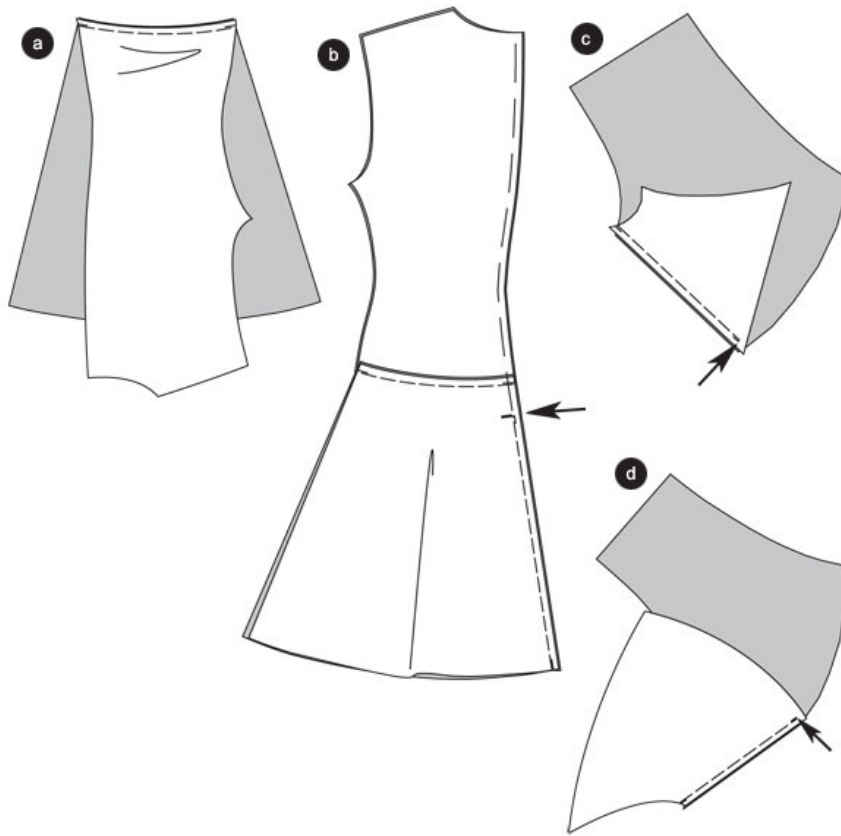
LINING

Cut lining according to pieces 1 to 10. – see cutting instructions on Pattern

INTERFACING

Cut interfacing according to drawings and iron onto the wrong side of the fabric and lining.

Step 6



Dress/ Backpiece

Stitch Skirt Pieces

Pin the back piece onto the skirt pieces right sides facing (seam number 9) and stitch. Cut seam allowances, finish them together and iron toward the back pieces. (a)

Back Middle Seam/ Slit

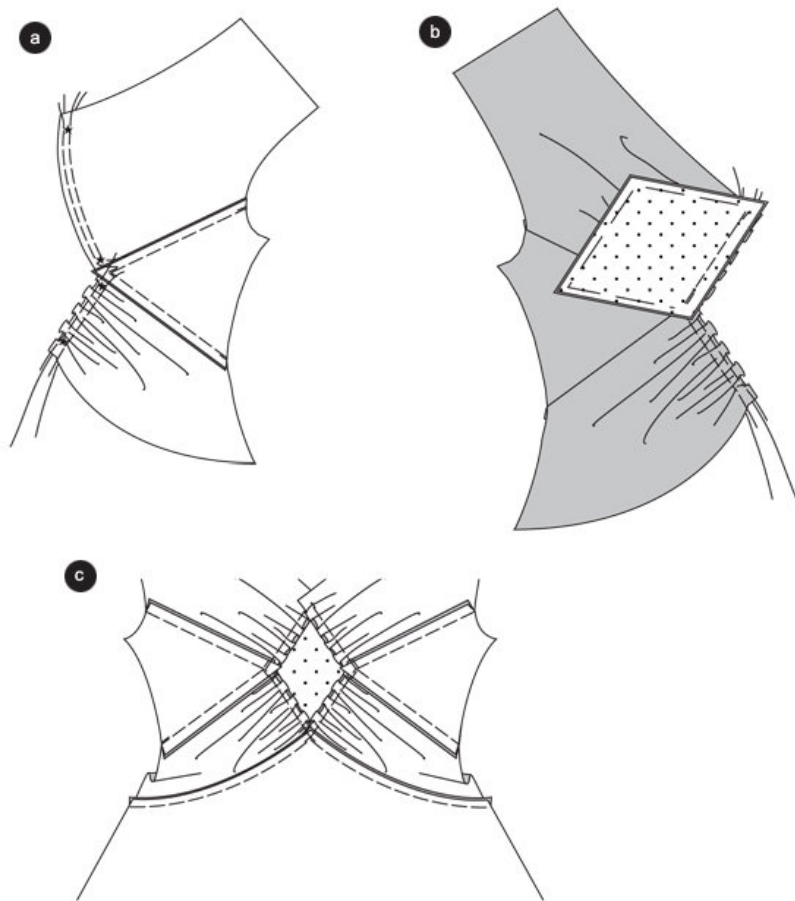
Place back pieces onto another right sides facing, pin middle seam with the skirt base seams meeting. Stitch the middle seam coming from the slit mark (arrow) downward. Secure seam ends. Leave slit pinned. Finish seam allowances. De-baste basting stitches at slit. (b)

Front Piece

Pin upper side front pieces right sides facing onto the upper front pieces. Pin and stitch seams (seam number 6), sew. The seam ends at the seam allowance (arrow). Iron seam allowances towards top. ©

Pin the middle front pieces right sides facing onto the upper side front pieces (seam number 7) and stitch. The seam ends at the seam allowance (arrow). Iron seam allowances toward bottom (d)

Step 7



Inset

Place fabric pieces onto another right side facing wrong side, the piece with the interfacing on the bottom. Pin edges.

To take in the upper and middle front pieces stitch twice each in between the star markings with large stitches. Pull bobbin thread to match the length of the edges.

Tie ends of thread. Distribute width evenly. (a)

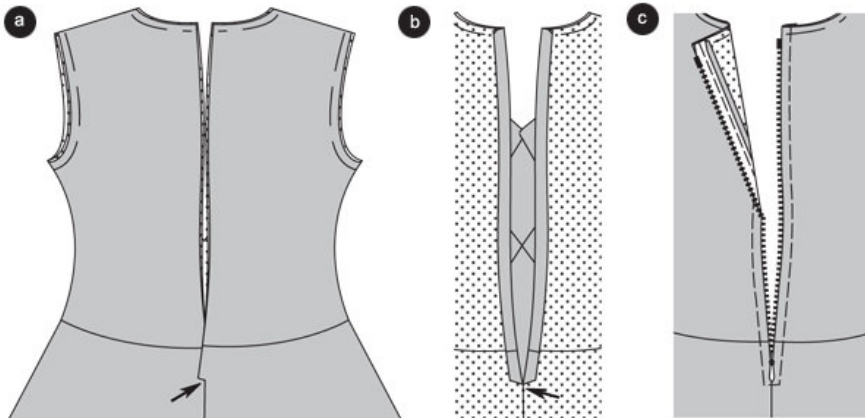
Stitch inset right sides facing onto one half of the front piece first (seam number 12) and then onto the other, stitching exactly to the edges/ seam allowances. Iron seam allowances towards the inset. (b)

Front Skirt Piece

Pin skirt piece right sides facing onto the bottom edge of the middle front piece, stitch, interrupting at the front middle. Secure seam ends. Cut at the seam allowance and iron towards the top.

©

Step 8



Shoulder/Side Seams

Place front piece right sides facing onto back piece, pin shoulder seams (seam number 10) and stitch. Cut seam allowances and trim held together and iron towards the back piece. Sew lining the same way you sewed the dress.

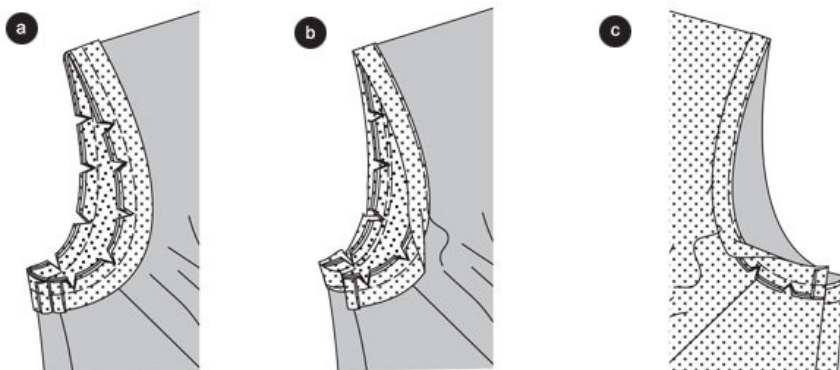
Pin lining onto dress wrong sides facing, seams meet. Pin neckline and sleeve lines onto another. Cut seam allowance of the edges in the back at the slit end all the way to the last stitch (arrow). (a) Turn the seam allowances inside around the lining's slit seam allowance (b)

Zipper

Pin zipper underneath the edges of the slit so that the teeth of the zipper are covered. Stitch zipper with the zipper foot

Pin zipper underneath the edges of the slit so that the teeth of the zipper are covered. Stitch zipper with the zipper foot. ©

Step 9



Sleeve Lines/ Diagonal Strip

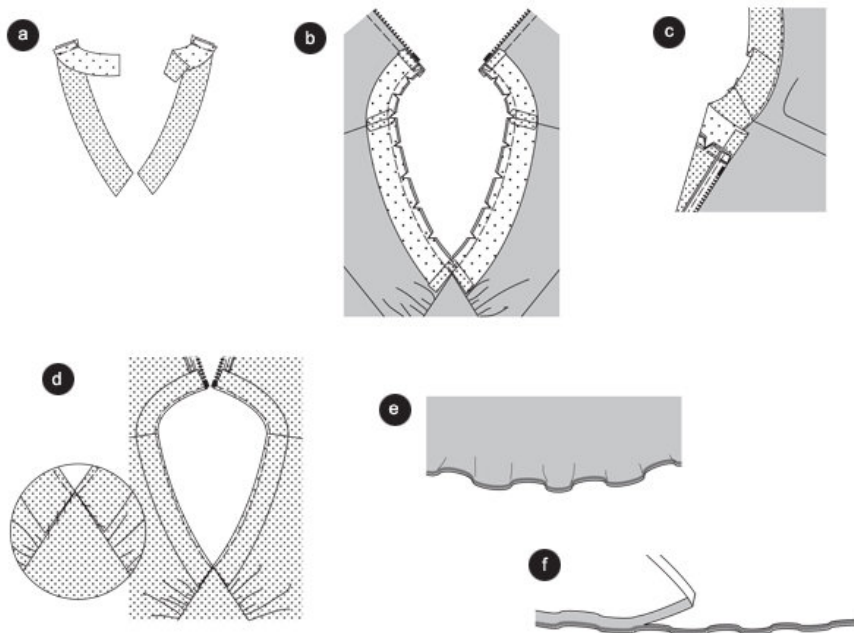
Cut the seam allowances of the sleeve lines back to 1 cm.

Fold diagonal strips lengthwise, iron. Pin diagonal strip onto the arm line rights sides facing, the open edges are lying atop the seam allowance. Stitch diagonal stripe allowing 1 cm. Trim seam allowances, cut in. (a)

Iron seam allowances into the diagonal strip. Stitch diagonal strip neatly at the base seam, stitching seam allowances. (b)

Fold the diagonal strip over to the inside and iron. Sew diagonal strip onto lining by hand. ©

Step 10



Neckline/ Facing

Place front facings onto back facings, right sides facing, stitch shoulder seams (seam number 11). Finish seam allowances. Trim lower edges of facing (a)

Pin facings onto the neckline's edges right sides facing, shoulder seams meet.(b)

Fold over the seam allowances of the front and back facing's edges. Stitch facing. © Trim seam allowances, cut in. Fold up facing, iron seam allowances into the facings and stitch neatly. (d)

Seam/Lining Seam

Fold over and iron seam allowance, stitch selvage with tight zigzag stitches. (e) Cut the overlapping seam allowance close to the stitches (f). The lining skirt should be about 1 cm (4/10 inch).

TIPP: Make a test on a leftover piece of fabric. Use darning thread. Test the thread tension and stitching settings. For experienced embroiderers: Embroider facing according to stitching pattern (Part 11) and add in pearls and sequins. To do this, use an embroidery hoop to hold the fabric and use stitching fabric. Pull away the lining.

