

Laura

By: burdastyle

<http://www.burdastyle.com/projects/laura>



Introducing your new office look. Perfectly dressed with a blouse or button down underneath, more casual with a stripy T or a tank. Make it special on the inside by choosing pretty lining fabric. Big pockets hold cell phones and all other necessities for a busy day...

Materials

Stretch cotton, printed cotton for the lining

Step 1

burda Download-Pattern Dress 6000 - Instructions

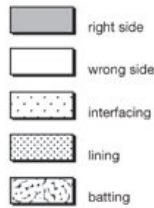
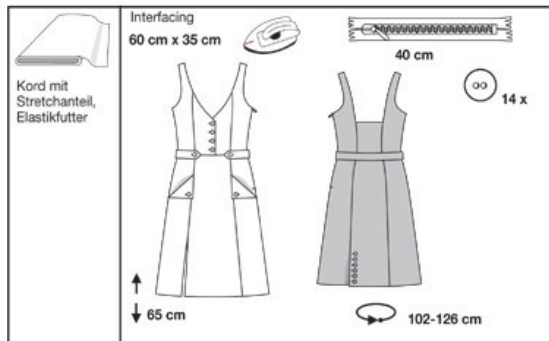


average

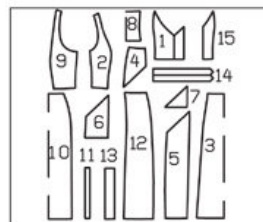
close fitting

burda sizes	55 ins / 140 cm						
	34	36	38	40	42	44	46
	yds 1 1/4	1 1/4	1 1/4	1 1/4	2	2	2
	m 1.55	1.55	1.55	1.55	1.75	1.75	1.75
Lining	yds 1/4	1/4	1/4	1/4	1/4	1/4	1/4
	m 0.55	0.55	0.55	0.55	0.55	0.55	0.55

→ with nap



Patternpieces:



PATTERN PIECES

- 1 Middle Front Piece 2x
- 2 Side Front Piece 2x
- 3 Front Middle Skirt 1x
- 4 Hip Yoke Piece 2x
- 5 Front Side Skirt 2x
- 6 Pocket/Lining 4x
- 7 Flap 2x
- 8 Middle Back Piece 1x
- 9 Side Skirt Piece 2x
- 10 Back Middle Skirt 1x
- 11 Facing
- 12 Back Side Skirt Piece 2x
- 13 Underlap
- 14 Belt 1x
- 15 Middle Front Piece/Lining 2x

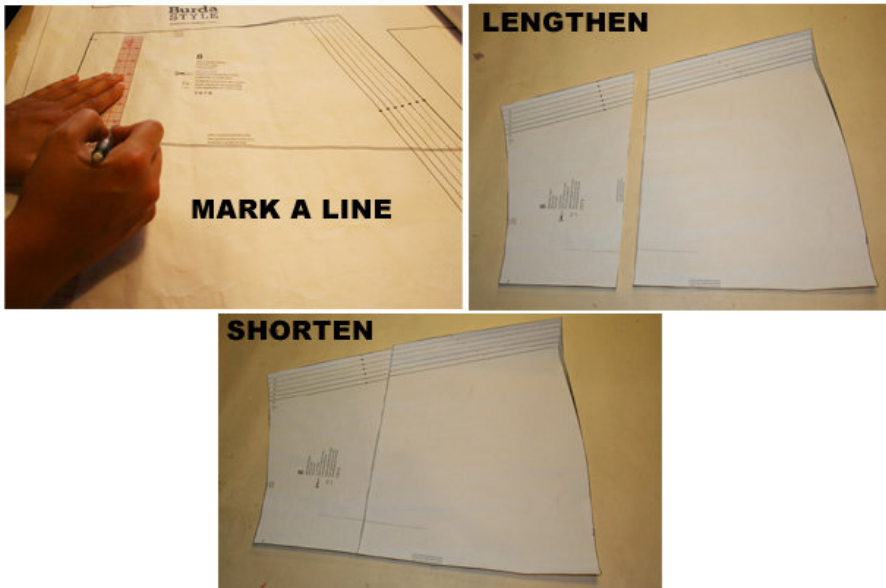
Fabrics: Stretchable corduroy, stretchable interlining

Step 2



The patterns can be printed out at the copy shop. If you decide to print them at home, follow the instructions: Paper cut for ANSI A (German DIN A4) prints: The patterns are printed out on 27 sheets with a thin frame. Wait until all sheets are printed out. Arrange the sheets so that they fit together (see additional page with the overview of the prints). Fold the single sheets on the upper and right edge along the thin frame lines. Begin with the left lower sheet and then tape the frame lines together precisely.

Step 3



ADJUST PATTERN SIZES

Select your size according to the Burda-dimension table: dresses, blouses, jackets and coats according to the bust size, trousers and skirts according to the hip width. Change the pattern to fit your measurements if they deviate from the Burda-size chart. Cut out the pattern according to your size. Refer to our â... Adjust patterns for mixed sizesâ... technique

LENGTHENING OR SHORTENING THE PATTERN PIECES

Our pattern is calculated for a height of 5â€¦ 6â€¦ (168 cm). If you are taller or shorter, you can adjust the pattern pieces along the lines marked “lengthen or shorten here”. This way the proper fit is maintained.

Always adjust all pattern pieces along the same line to the same degree.

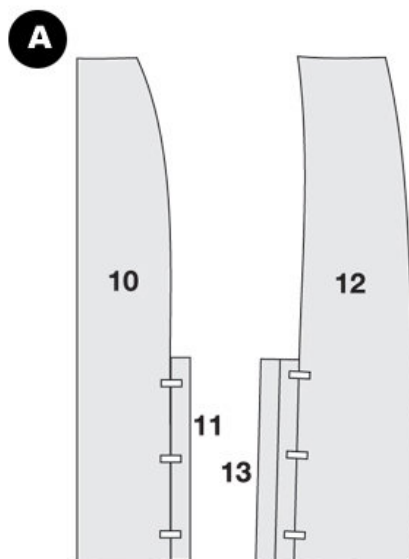
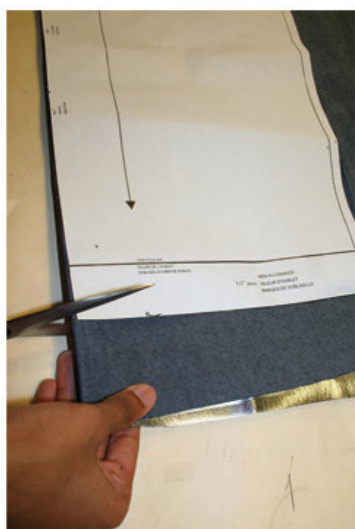
How to lengthen and shorten pattern pieces:

Cut the pattern pieces along the marked lines

To lengthen, slide the two halves of the pattern piece as far apart as necessary.

To shorten, overlap the two halves of the pattern piece as far as necessary. Blend the side edges.

Step 4



CUTTING OUT

FOLD (â€¦ â€¦ â€¦ â€¦) means: Cut on the fold, the fold being the center of the pattern piece, but never a cut edge or seam. The piece should be cut double, with the fold line forming the center line. Pattern pieces that are outlined with a broken line in the cutting diagrams are to be placed face down on the fabric. The cutting diagrams on the pattern sheet show how the pattern pieces should be placed on the fabric.

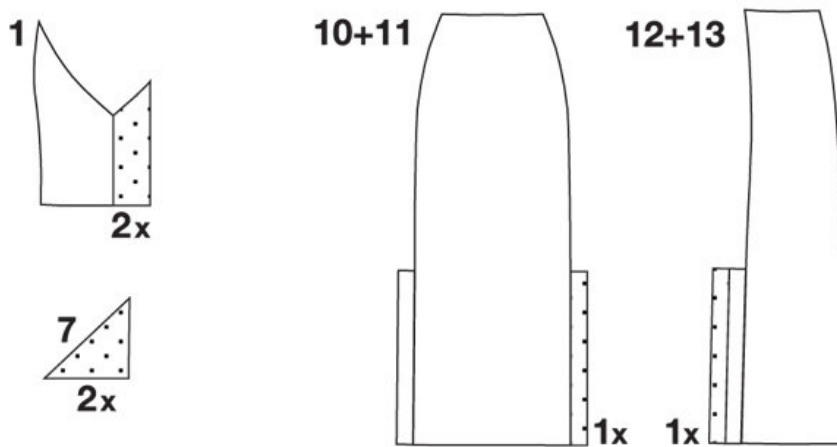
The cutting diagrams show the placement of the pattern on the fabric.

For a single layer of fabric, the pattern pieces are pinned to the right side. For double layers of fabric, the right sides are facing and the pattern pieces are pinned to the wrong side. The pattern pieces that are shown extending over the fold of the fabric in the cutting diagram should be cut last from a single layer of fabric .

ATTENTION: Before you cut, glue part 11 to part 10 and part 13 to part 12 (see page 2). Facing and underlap are only needed at the LEFT princess seam. After cutting the pattern piece, they are going to be trimmed at the right seam (A).

Step 5

INTERFACING



SEAM AND HEMLINE ALLOWANCES are included on an average:

1 5/8" (4 cm) for hem, 5/8" (1.5 cm) for all edges and stitches. Using BURDA copying paper, transfer the lines and signs of the pattern onto the wrong side of the fabric. Instructions can be found in the packaging.

Sewing

While sewing, the right sides of the fabric are facing.

Transfer all lines of the pattern onto the right side of the fabric using basting stitches.

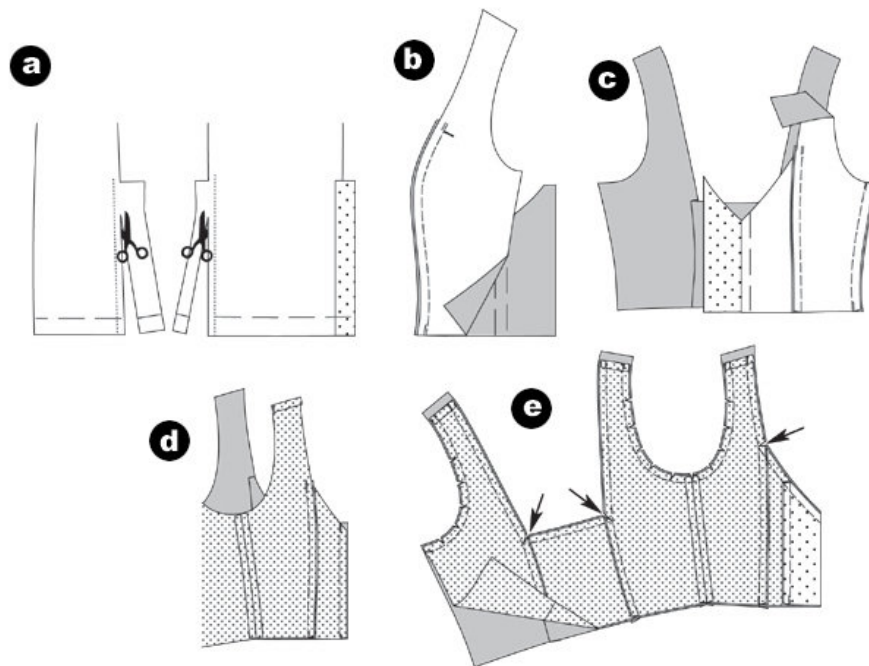
LINING

Cut lining according to pattern pieces 2, 6, 7, 8, 9 and 15. _See pattern

INTERFACING

Cut the interfacing according to the drawing and iron onto the wrong side of the fabric.

Step 6



DRESS

Trimming the back right side seam (skirt)

Cut the underlap at the back right side skirt piece. Cut the facing at the middle skirt on the right side. (a)

Bodice/ Seams

Place side front pieces right sides facing onto the middle front pieces, pin the front princess seams (seam number 1) and stitch. Pin the back dividing seams in the same way (seam number 2) and stitch. Trim seam allowances and iron toward the front middle and back middle. (b)

Right Side Seam

Place right front piece right sides facing onto the back piece, stitch the right side seam (seam number 3), fold apart and iron the seam allowances. ©

LINING

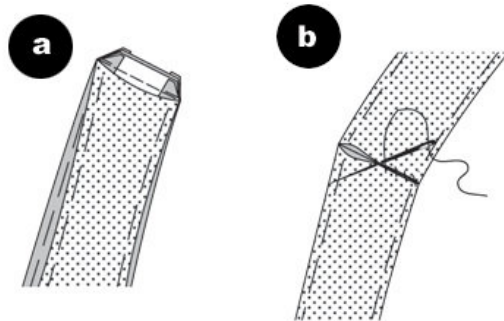
Stitch and iron the front side seams and side seams of the lining as you did with the fabric. At the lining, iron the seam allowance of the shoulder edges to the inside.

Doubling the Bodice with Lining

Stitch the lining right sides facing onto the cut facing of the front pieces (seam number 5). Iron the seam allowances into the lining. (d)

Turn the cut facings to the outside at the SELVAGE LINE. Pin the lining onto the bodice, right sides facing. Pin the neckline's edges and the sleeve line's edges together and stitch. Trim seam allowances, cut in at the rounded edges. Cut into the edges at the front and back neckline (arrows). Turn bodice. Pin lining wrong sides facing onto the bodice. Pin edges. Pin the open side and lower edges together. Unbaste the side edges (fabric and lining). (e)

Step 7

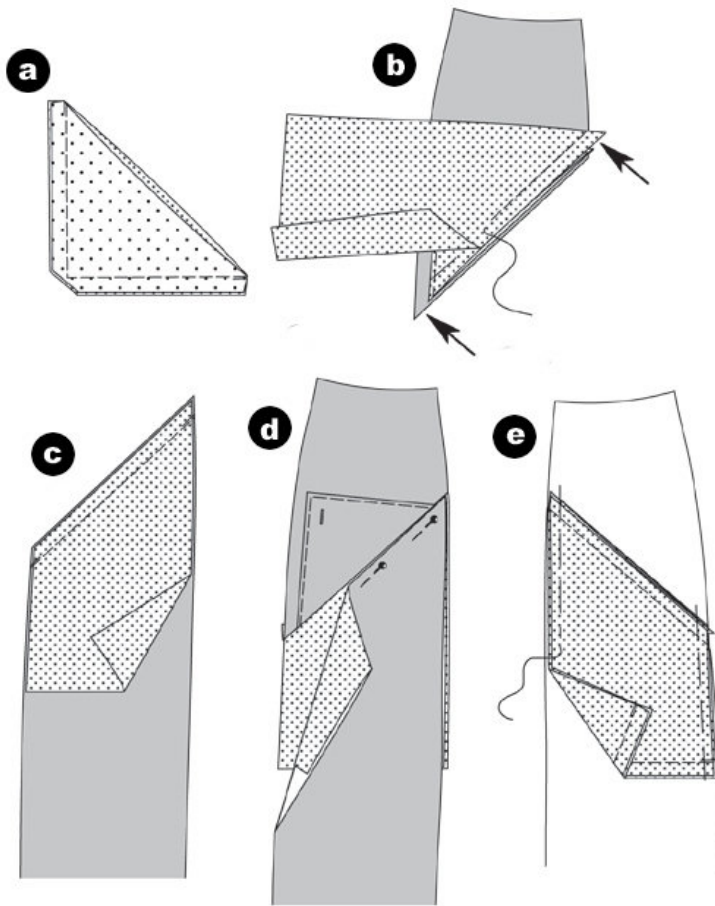


Shoulder Seams

Place front pieces right sides facing onto the back piece, stitch shoulder seams (seam number 4), do not take in lining. (a)

Trim seam allowances and cut diagonally at edges. Push the seam allowances under the lining, fold apart and iron. Sew edges of the lining together by hand. Stitch front edges, neck line edges and sleeve line edges neatly. (b)

Step 8



SKIRT

Pockets/Flaps

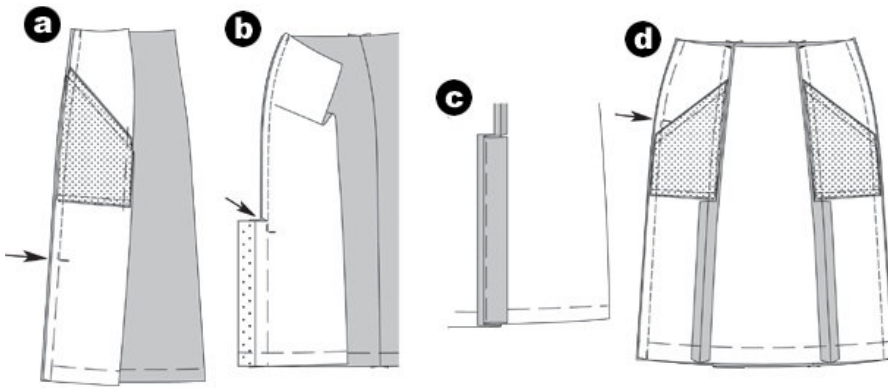
Place one fabric flap each onto a lining flap, right sides facing. Pin edges according to the drawing and stitch. Trim seam allowances, cut edges diagonally. Turn flaps. Pin edges, iron and stitch neatly. Add in **BUTTON HOLE**. (a)

Pin the flap with the upper end right sides facing onto the hip yoke piece (seam number 6). Pin the pocket above the flap. The seam allowances of the pocket and the hip yoke pieces should overlap at the flap (arrows). Stitch edges onto each other, taking in the flap. Trim seam allowances. Iron flap and pocket downward, seam allowances upward. (b)

Stitch the second pocket right sides facing onto them pocket opening of the front skirt piece. Pin pocket toward the inside. Iron edge. ©

Place the flap up. Pin the pocket opening at the flap base seam onto the pocket. Stitch the lower edges of the pocket right sides facing onto each other (d). Pin the side pocket edges onto the skirt (e).

Step 9



Front Side Seams/ Right Slit

Place the front side skirt pieces right sides facing onto the front middle skirt piece, pin dividing seams (seam number 7). Stitch seams, end right of the arrow mark (arrow). Secure seam ends. Leave the slit pinned. Trim seam allowances, fold them apart and iron them from the bottom to the pockets. Cut in the seam allowances at the lower pocket edges of the side skirt piece on both sides. Iron the seam allowances starting at the cuts into the middle front skirt piece (see also drawing d). (a)

Back Side Seams/ Left Slit

Place the right backside skirt right sides facing onto the back middle skirt, pin the dividing seam (seam number

8) and stitch. Fold apart and iron seam allowances.

Place the backside skirt piece right sides facing onto the back middle skirt piece, pin the dividing seam (seam number 9) from the top until you reach the arrow mark. Secure seam ends. Cut in the side skirt piece at the end of the underlap, ending at the stitching line (arrow) (b)

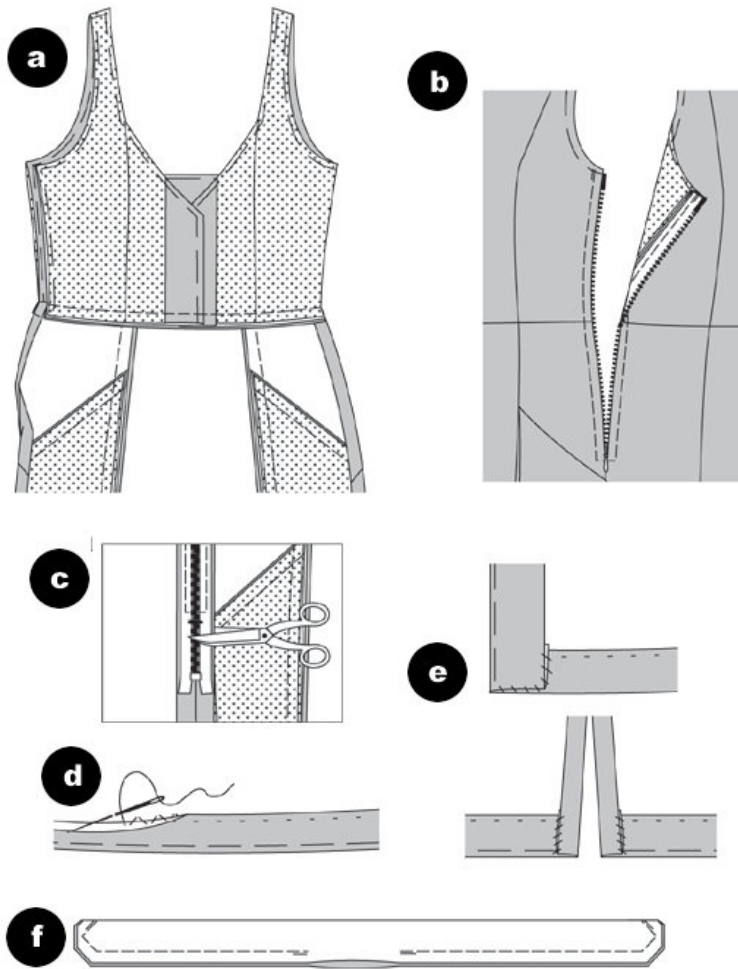
Trim seam allowances, facing and underlap. Fold apart and iron the seam allowances until you reach the cut. After the cut, iron the facing and underlap into the middle skirt piece. Fold over and pin, then iron the facing at the underlap near the selvage line. ©

Side seams/ left slit

Place front skirt piece right sides facing onto the back skirt piece, pin side seams (seam number 9) and stitch. (d)

ATTENTION: Pin at the left side seam from the arrow mark (arrow) downward. Leave slit pinned. Trim seam allowances, fold apart and iron. Tear basting stitches at the slit.

Step 10



Stitching Bodice

Add in **BUTTON** holes into the right front edge. Pin the right front piece middle on middle onto the left one, pin the lower edges onto each other.

Pin the bodice right sides facing onto the skirt edge, so that seams are meeting. Pin the waist seam (seam number 10) and stitch together. Trim seam allowances, serge them held together and iron them into the skirt. (a)

Zipper

Fold the seam allowances over to the inside at the slit.

Pin the zipper underneath the slit edges so that the teeth are covered up. Fold over the ends of the zipper band at the top. Stitch the zipper to the garment with the zipper foot. (b) Should the zipper be too long, tie it off at the slit end and cut it ©

Seam/Slit

Tear the basting stitches at the slits. Apply facing and addition to slit.

Trim seam allowance, fold over and iron. Attach the seam loosely by hand (d). Turn the slitâ... s seam allowances and facing back over to the inside, sew them onto the seam (e). Add the **BUTTON HOLES** into the back middle

skirt piece. Attach the **BUTTONS** at the underlap. Sew buttons in the front middle onto the left front piece. Also sew buttons onto the front side skirt piece to match the flaps.

Belts

Fold belt lengthwise, right side inside. Pin edges one to the other according to the drawing and stitch, leaving an opening to turn it later. Secure seam ends. Turn belt. Pin edges, iron. Stitch edges neatly, closing the opening.

Add in **BUTTON HOLES**. Sew the **BUTTONS** onto the waistband. Button belt. (f)

BurdaStyle

Laura