

12/2011 Dress with contrasting bow

By: burda style magazine

<http://www.burdastyle.com/projects/122011-dress-with-contrasting>

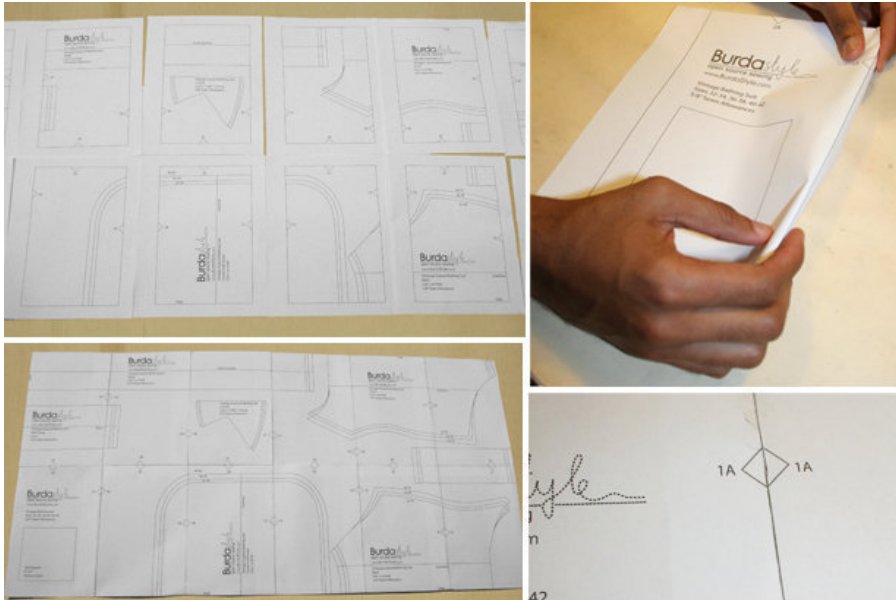


Dress with contrasting bow burda style magazine patterns FAQ

Materials

Crpe satin

Step 1 — Preparation



Paper cut for ANSI A (German DIN A4) prints:

This pattern is printed on 8.5 × 11 sheets of plain paper. Do not scale or center pages before printing. Wait until all sheets are printed out before beginning to tape them together. **Do not cut out pattern pieces yet**— Arrange the sheets on a large, hard, flat surface so that they fit together, matching up like numbers and letters (i.e. 6A to 6A). To tape pattern together, fold under the margin of one piece (6A) and tape right against the line of it's matching number/letter (6A).

burda style magazine pattern do not have seam allowance included.

Seam and hem allowances to be added: Seams and edges 1.5 cm (5/8 in).

Step 2 — Cutting out



Red fabric:

21front, on a fold 1x

22back, on a fold 1x

23front armhole facing 2x

24back armhole facing 2x

Pink fabric:

25front neck band, on a fold 2x

26back neck band, on a fold 2x

27band for bow, on a fold 1x

Interfacing: See pattern layout.

Step 3 — Pleats

Fold pleats in upper front and back edges in direction of arrows and baste.

Step 4 — Side seams

Stitch side seams on dress and on armhole facings. Press seam allowances open.

Step 5 — Facings

Stitch facings right sides together with armholes. Trim seam allowances. Turn facings over seam allowances into armholes and stitch to seam allowances, close to seams. Turn facings to inside. Baste upper ends of facings in place.

Step 6 — Neck

Stitch outer front neck band to front, between markings. Stitch outer back neck band to back, between markings. Press seam allowances onto bands. On inside neck band pieces, press allowances on shoulder seam edges to wrong side and baste. Lay inside band pieces right sides together with outer pieces — at shoulder edges, allowances of outer band pieces extend. Stitch neck edges together. Stitch lower edges of bands together, turning allowances of joining seam down again to do so. Trim seam allowances. Turn bands right side out. To do this, push ends into narrow fabric tubes to inside and then pull out toward the centre. Press seamed edges. Turn inside edges under and sew in place. Stitch shoulder seams of outer band. Press allowances of shoulder seams open and slip under inside band pieces. Sew shoulder edges of inside band together by hand.

Step 7 — Hem

Press hem allowance to inside and sew in place by hand.

Step 8 — Bow

Fold band for bow lengthwise, right side facing in. Stitch band edges together, leaving a section of seam open for turning. Trim seam allowances. Turn band right side out and press edges. Sew seam opening closed. Sew band for bow to neck band, at centre front, so that one is approx. 15 cm (6 ins) longer. Tie band in a bow.

BurdaStyle

12/2011 Dress with contrasting bow