

## 01/2012 Satin/chiffon slip dress

By: burda style magazine

<http://www.burdastyle.com/projects/012012-satinchiffon-slip-dress>

---



Satin/chiffon slip dress burda style magazine patterns FAQ

## Materials

Crpe satin, Chiffon

---

## Step 1 — Preparation



Paper cut for ANSI A (German DIN A4) prints:

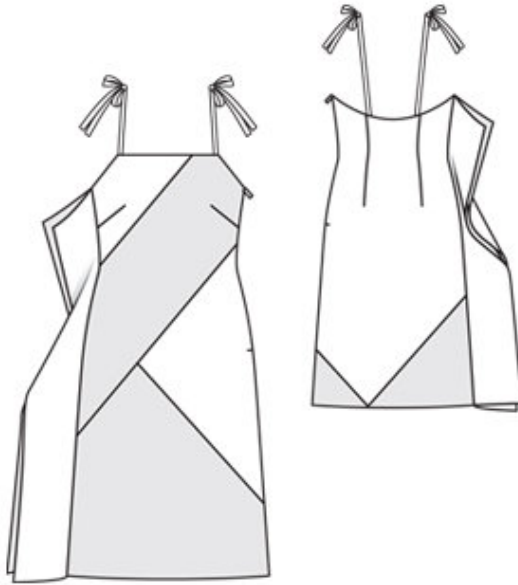
This pattern is printed on 8.5 × 11 sheets of plain paper. Do not scale or center pages before printing. Wait until all sheets are printed out before beginning to tape them together. **Do not cut out pattern pieces yet**— Arrange the sheets on a large, hard, flat surface so that they fit together, matching up like numbers and letters (i.e. 6A to 6A). To tape pattern together, fold under the margin of one piece (6A) and tape right against the line of it's matching number/letter (6A).

**burda style magazine pattern do not have seam allowance included.**

Seam and hem allowances to be added: Seams and edges 1.5 cm (5/8 in).

---

## Step 2 — Cutting out



Crpe satin:

1 front, divided 1x

2 back, divided 1x

3 back facing, on a fold 1x

4 flounce for side seam 2x

a) 4 straps, 60 cm (23<sup>3</sup>/<sub>4</sub> ins) long, 4 cm (1<sup>5</sup>/<sub>8</sub> ins) wide (incl. allowances).

Use the shiny satin side as the right fabric side for the pieces shown in grey on the pattern layout. Use the matte side as the right fabric side for the pieces shown in white on the pattern layout. The pattern layout shows how to place the pieces on the shiny satin side of the fabric.

Chiffon (lining): piece 1 to lining line, piece 2.

Interfacing: See pattern layout. Iron Vilene Bias Tape/ stay tape to wrong edges of zip opening.

---

### Step 3 — Front

On dress front, first stitch lower section seam (from lower left to upper right). Press seam allowances open. Then stitch the middle and upper section seams. Press seam allowances open. Stitch back section seams.

---

### Step 4 — Darts

Stitch darts. Press vertical darts toward centre. Press bust darts down.

---

## Step 5 — Flounce

Lay flounce pieces together, with shiny satin sides facing. Baste joining edges together to right side seam edge of front — seam allowance of neck edge extends.

---

## Step 6 — Side and bottom

Stitch right side seam. Trim bottom ends of seam allowances at angles. Press seam allowances open.

---

## Step 7 — Darts

Stitch darts and right side seam of lining. Lay lining on dress front and back, with right side facing wrong side. Baste lining to left side edges, above slit mark, and to neck edge. Stitch straight upper edge of front lining to facing, next to fold line.

---

## Step 8 — Zip

Sew invisible zip to left opening edges, see the "Helpful Hint" on page 12. On main fabric, clip seam allowances at end of zip slit. Stitch left side seams of dress and lining each separately.

---

## Step 9 — Face neck edge

Stitch right end of back facing to front self-facing, noting seam numbers. Turn front self-facing to outside, on fold line. Pin to side edges and pin back facing to back neck edge. At zip slit, turn facings back, approx. 5 mm (3/16 in) before edge of slit, and pin. At slit edges of dress, turn allowances to outside and pin to neck edge, over facing. Stitch along neck edge. Turn facing and allowances on slit edges to inside. Sew facings to zip tapes and to side seam.

---

## Step 10 — Straps

Fold each strap lengthwise, right side facing in. Stitch 1 cm (3/8 in) from fold edge. Turn straps right side out and press. Sew straps under corners of front neck edge and under upper back edge, next to darts.

---

## Step 11 — Hem

Finish hem edges of dress and lining with closely spaced zigzag stitching: Press allowance to wrong fabric side. Work from right side to stitch along fold edge with short, closely spaced zigzag stitching. On inside, carefully trim allowance next to stitching.

---

**BurdaStyle**

01/2012 Satin/chiffon slip dress