

# Dress With Knot Front 03/2012

By: burda style magazine

<http://www.burdastyle.com/projects/dress-with-knot-front-032012>

---



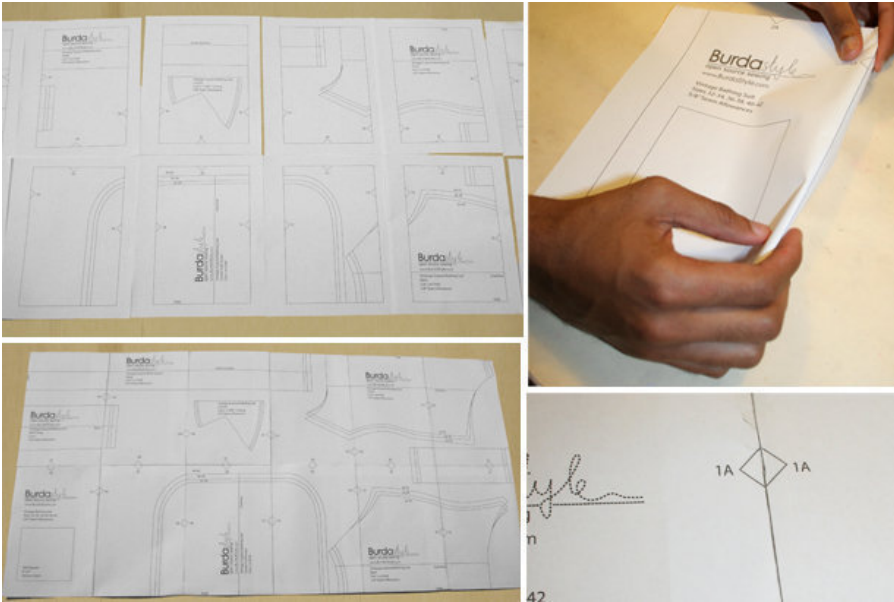
Dress sewing pattern. This dress is a fun challenge with a pattern magic style knot in the front. burda style magazine patterns FAQ

## Materials

Check batiste, width: 160 cm (63 ins), length: 2.15 m (21/2 yds) for all sizes. Plain batiste as lining, 140 cm (55 ins) wide: 0.50 m (5/8 yd). 0.35 m (1/2 yd) Vilene/Pellon G 785, 90 cm (36 ins) wide. Vilene Bias Tape/stay tape 1 invisible zip 40 cm long, and a special presser foot. Sewing thread.

---

## Step 1 — Preparations



Paper cut for ANSI A (German DIN A4) prints:

This pattern is printed on 8.5 × 11 sheets of plain paper. Do not scale or center pages before printing. Wait until all sheets are printed out before beginning to tape them together. **Do not cut out pattern pieces yet**— Arrange the sheets on a large, hard, flat surface so that they fit together, matching up like numbers and letters (i.e. 6A to 6A). To tape pattern together, fold under the margin of one piece (6A) and tape right against the line of it's matching number/letter (6A).

Trace the pattern pieces from the pattern sheet following the lines and markings for the correct size and the correct style (108B). (This pattern also includes pattern pieces, lines and markings for style 108A and C that should be ignored.)

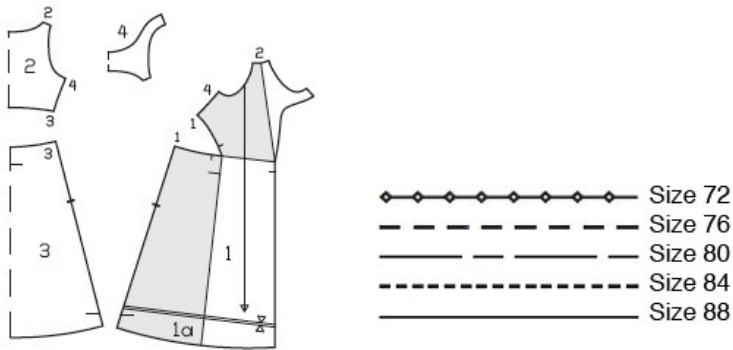
Tape pieces 1 and 1a together on the joining line.  
Trace the front lining marked on piece 1.

**burda style magazine pattern do not have seam allowance included.**

Seam and hem allowances to be added: 4 cm (15/8 ins) for hem, 1.5 cm (5/8 in) at all other seams and edges.

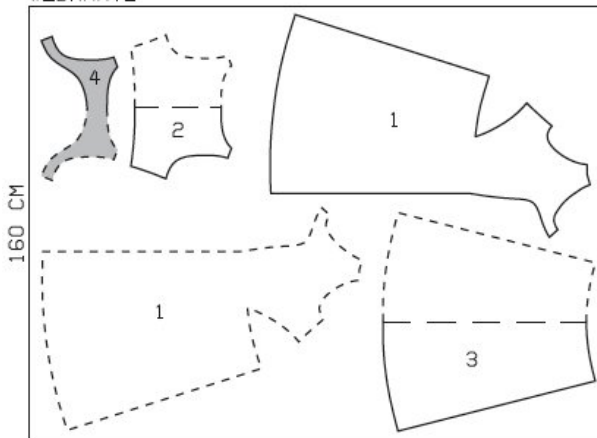
---

## Step 2 — Cutting out



Main fabric, 160 cm width, size 72 - 88

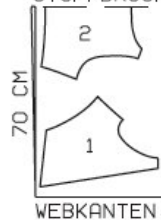
WEBKANTE



WEBKANTE

Lining, 140 cm width, size 72 - 88

STOFFBRUCH



Webkante = Selvage  
 Stoffbruch = Fabric fold

Main fabric:

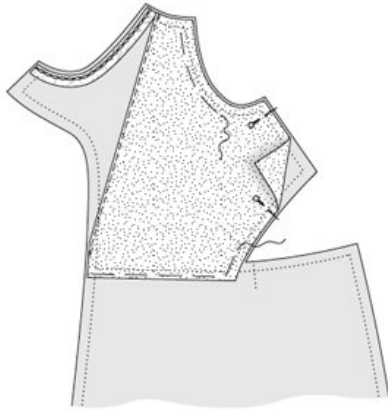
- 1 front (with front skirt panel) 2x
- 2 back, on a fold 1x
- 3 back skirt panel, on a fold 1x
- 4 back facing, on a fold 1x

Lining

- 1 front to lining line 2x
- 2 back, on fold 1x

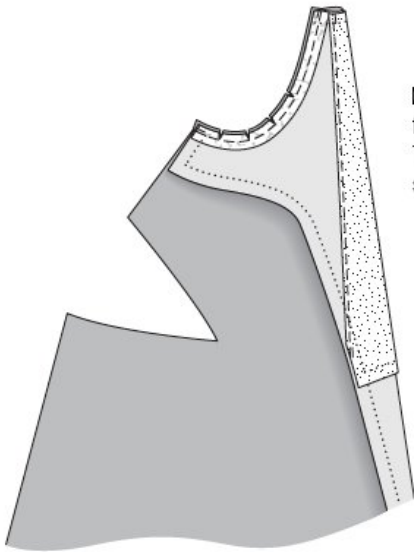
Interfacing: Iron to wrong side of armhole edges of integrated front facings so that the chain stitch of the Bias Tape lies on the seam allowance, close to the seam line.

### Step 3 — Sewing

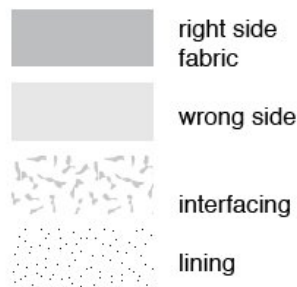


Place right sides of fabric together to baste and stitch.  
Secure start and end of seams by back-stitching.

☒ Lay front lining pieces on front pieces, with right side facing wrong side. Baste pieces together along lower and side edges and also along armhole and shoulder edges. Edgestitch allowance of front



☒ Fold front facings toward right side of front. Pin armhole edges together. Stitch. Trim seam allowances. Clip curves close to stitching.

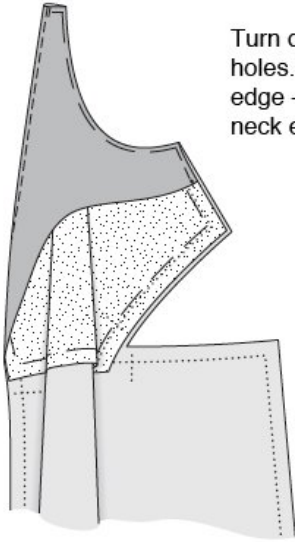


Follow instructions for sewing

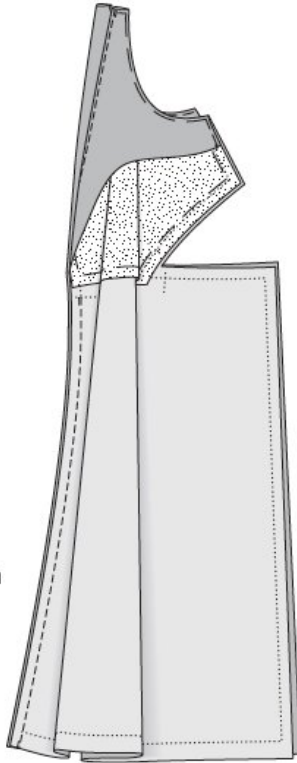
---

## Step 4 — Sewing

Turn dress bodice right side out. Baste edges of armholes. Press. Baste facing to shoulder edge and to side edge – the front is wider than the facing. Do not press neck edge



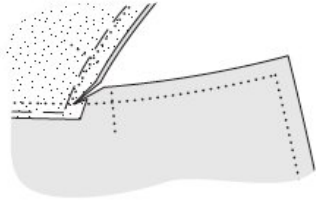
Lay front pieces right sides facing. Pin centre front seam from marking to lower edges. Stitch (4). Press seam allowances open and ne



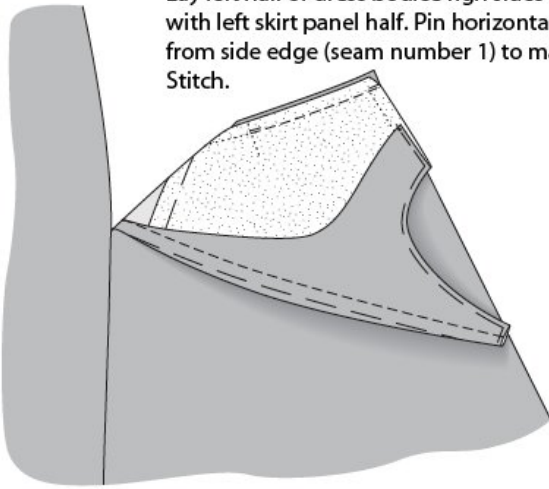
Follow instructions for sewing

---

## Step 5 — Sewing



Press seam allowances open and neaten edges.  
Clip each front into corner, to 5 mm (3/16 in) before the marked seam line.

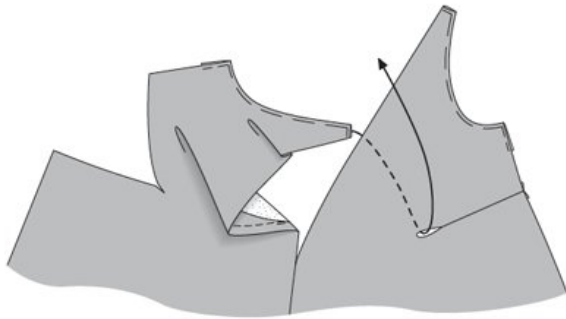


Lay left half of dress bodice right sides together with left skirt panel half. Pin horizontal seam from side edge (seam number 1) to marking. Stitch.

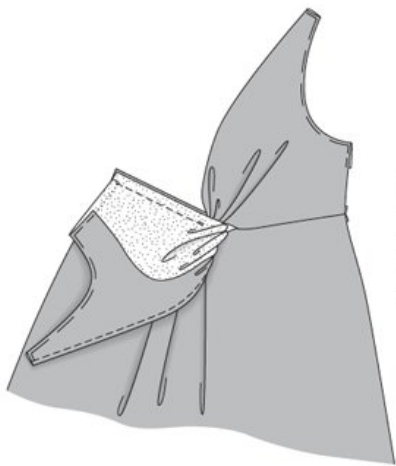
Follow instructions for sewing

---

## Step 6 — Sewing



Turn left half of dress bodice up again.  
☒ Pull right half of dress bodice through opening in seam, from inside to outside.



Fold right half of dress bodice down onto right skirt panel half, right sides facing. Pin horizontal seam from side edge (seam number 1) to seam mark. Stitch

Follow instructions for sewing

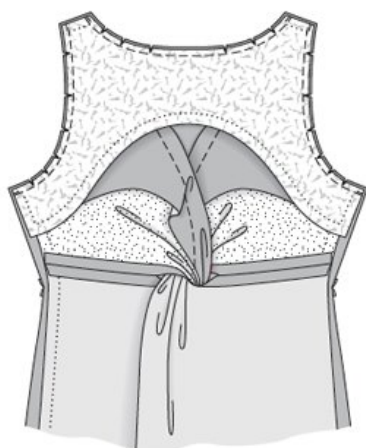
---

## Step 7 — Sewing



Turn right half of dress bodice up again. Press allowances of horizontal seams open and neaten edges.

- ☒ Lay back lining piece on back piece of outer fabric, with right side facing wrong side. Baste together along all edges. Lay back right sides together with back skirt panel. Pin horizontal seam. Stitch. Press seam allowances open and neaten edges.
- ☒ Back neck edges, shoulder seams: Lay facing right sides together with back. Pin together along neck and armhole edges. Stitch. Trim seam allowances and clip curves.

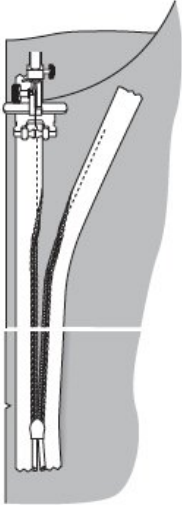


Leave facing lying right sides together with back. Slip front shoulder edges between facing and back, into shoulder edges – right fabric sides of dress lie together. Pin shoulder seams. Stitch

Follow instructions for sewing

---

## Step 8 — Sewing

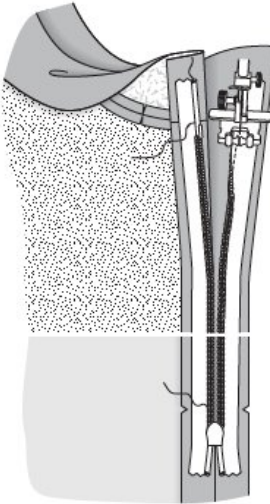


Pull front out of back again and the back facing will turn itself to the inside. Press back neck edges.

- ☒ Right side seam: Lay front right sides together with back. Pin right side seam, turning facing at armhole up again and pinning narrow edges of facing together. Stitch. Press seam allowances open and neaten edges.
- ☒ Invisible zip, left side seam: Turn facings at armholes up again. Open the zip and push the coil back with your thumbnail to reveal the marked seam line between the zip tape and the coil. Place the open zip face down on the right fabric side of one back slit edge (on outer side of dress). In order to stitch the zip in place exactly along the marked seam line, you must first calculate the distance between the edge of the zip tape and the edge of the fabric as follows:

Stitch zip in place from the top to the marked end of the slit. Close zip. Place the other zip tape face down on the front slit edge (on outer side of dress) and pin in place at the top. Open zip again. Place the presser foot on the top end of the zip so that the coil is in the notch to the left of the needle.

Sew the zip in place from the top to the end of the slit. Stitch left side seam from the lower edge to the zip. Press the seam allowances open and neaten edges of allowances. Fold armhole facings down again, turn edges under, and sew to zip tapes. Neaten edge of hem allowance. Press hem allowance to inside. Stitch hem in place loosely by hand



Follow instructions for sewing

---

## BurdaStyle

Dress With Knot Front 03/2012