

# Jersey Dress 03/2012

By: burda style magazine

<http://www.burdastyle.com/projects/jersey-dress-032012>

---



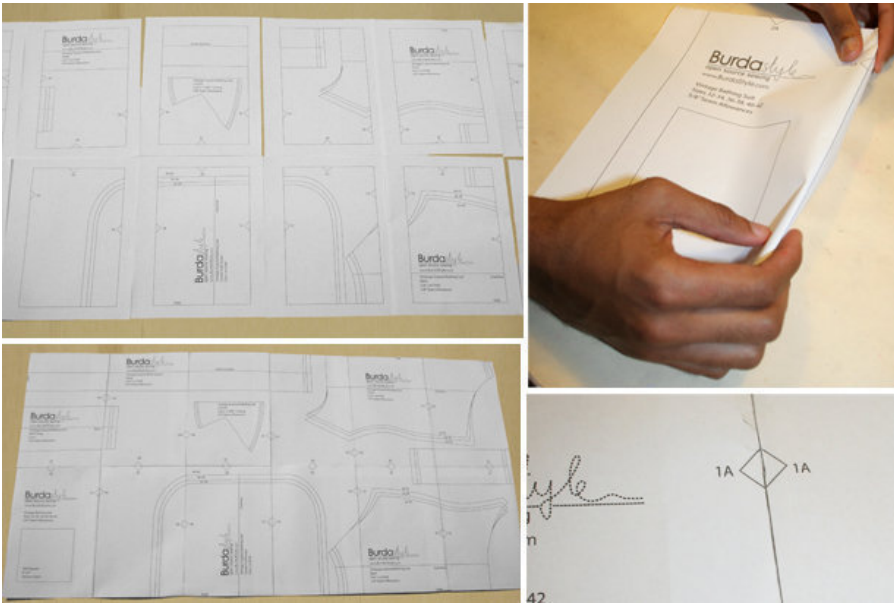
Jersey dress sewing pattern. burda style magazine patterns FAQ

## Materials

Stretch jersey, with: 148 cm (58 ins) Length: 1.40 m (1 5/8 yds). Vilene Bias Tape/stay tape.

---

## Step 1 — Preparations



Paper cut for ANSI A (German DIN A4) prints:

This pattern is printed on 8.5 × 11 sheets of plain paper. Do not scale or center pages before printing. Wait until all sheets are printed out before beginning to tape them together. **Do not cut out pattern pieces yet**— Arrange the sheets on a large, hard, flat surface so that they fit together, matching up like numbers and letters (i.e. 6A to 6A). To tape pattern together, fold under the margin of one piece (6A) and tape right against the line of it's matching number/letter (6A).

Trace the pattern pieces from the pattern sheet following the lines and markings for the correct size and the correct style (102). (This pattern also includes pattern pieces, lines and markings for style 101 that should be ignored.)

Trace the pocket piece from piece 21 as a separate pattern piece, it is the same for all sizes.

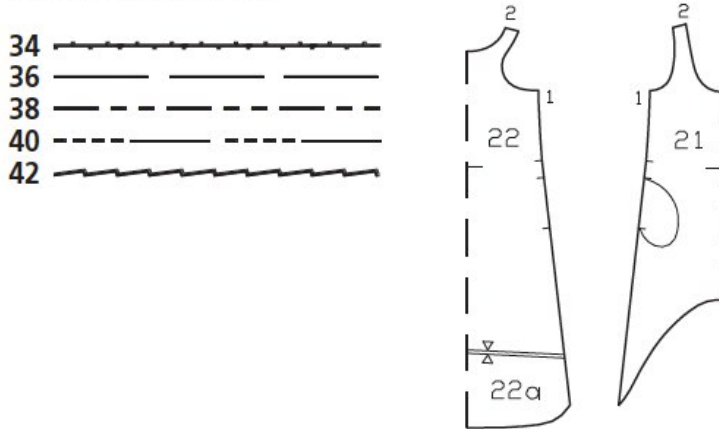
**burda style magazine pattern do not have seam allowance included.**

Seam and hem allowances to be added: Seams and edges 1 cm (3/8 in), no allowance at hem edges.

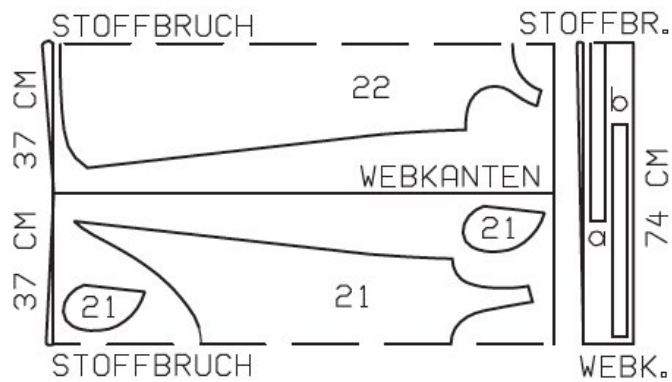
---

## Step 2 — Cutting out

Pattern Pieces 21 and 22



Fabric width 148 cm



Webkante = Selvage  
Stoffbruch = Fabric fold

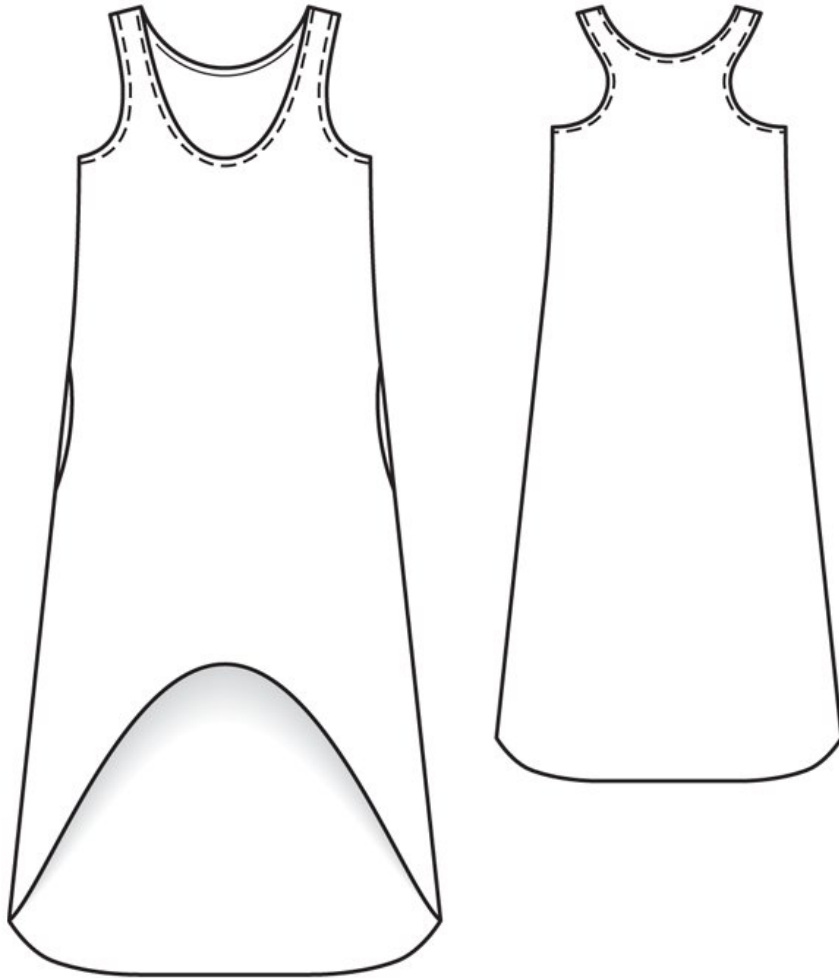
21 front, on a fold 1x  
pocket piece 4x  
22 back, on a fold 1x

Also draft and cut the following pieces not included in the pattern sheet:

- a) facing strip for neck edge, 80, 81, 83, 85, 86 cm (31 1/2, 32, 32 3/4, 33 1/2, 34 ins) long, 3.5 cm (1 1/2 ins) wide (incl. allowances),
- b) 2 facing strips for armholes, 50, 52, 53, 55, 57 cm (19 3/4, 20 1/2, 21, 21 3/4, 22 1/2 ins) long, 3.5 cm (1 1/2 ins) wide (incl. allowances).

Vilene Bias Tape/stay tape: Iron to neck and armhole edges, front shoulder seam edges, and pocket opening edges.

### Step 3 — Sewing



Stitch shoulder seams. Press seam allowances onto front.

Neck edge: Fold facing strip length wise, right side facing out, and press. Pin folded facing strip to neck edge so that fold edge of strip lies on garment piece, 7 mm (1/4 in) past seams line. Begin at left shoulder seam and turn beginning and end of facing strip under. Stitch along marked neck edge. Trim seam allowances. Turn facing strip to inside and press edge. Topstitch 5 mm (3/16 in) from neck edge.

Face armhole edges as for neck edge. Do not turn ends of facing strips under. Topstitch armhole edges.

Stitch side seams, not stitching across pocket openings.

Inseam pockets: Pin pocket pieces right sides together with seam allowances of pocket opening edges and stitch in place, directly along seam lines. Press pocket pieces forward and stitch together.

Hem: Finish the hem edges with an overlock seam.

---

**BurdaStyle**

Jersey Dress 03/2012