

One Shoulder Flounce Dress 05/2012

By: burda style magazine

<http://www.burdastyle.com/projects/one-shoulder-flounce-dress-05>



Shoulder flounce dress sewing pattern. This dress has a off the shoulder flounce detail and an elastic waist. It is a great pattern that is easy to sew.

Materials

Cotton satin with crosswise stretch, width: 140 cm (55 ins) length: 2.00 m (2 1/4 yds) for all sizes. Rigilene boning, 12 mm (1/2 in) wide, 2.25 2.35 2.35 2.45 2.45 m (2 5/8 2 5/8 2 5/8 2 3/4 2 3/4 yds) long. Elastic, 1 cm (3/8 in) wide, 0.70 0.75 0.80 0.80 0.85 m (7/8 7/8 7/8 7/8 1 yd) long . Elastic, 2 cm (3/4 in) wide: 1.65 1.70 1.80 1.85 1.90 m (1 7/8 1 7/8 1 2 1/8 2 1/8 yds) long.

Step 1 — Preparations



Paper cut for ANSI A (German DIN A4) prints:

This pattern is printed on 8.5 × 11 sheets of plain paper. Do not scale or center pages before printing. Wait until all sheets are printed out before beginning to tape them together. **Do not cut out pattern pieces yet**— Arrange the sheets on a large, hard, flat surface so that they fit together, matching up like numbers and letters (i.e. 6A to 6A). To tape pattern together, fold under the margin of one piece (6A) and tape right against the line of it's matching number/letter (6A).

Trace the pattern pieces from the pattern sheet following the lines and markings for the correct size.

Trace pieces from pattern sheet. Lengthen pieces 21 and 22 as indicated.

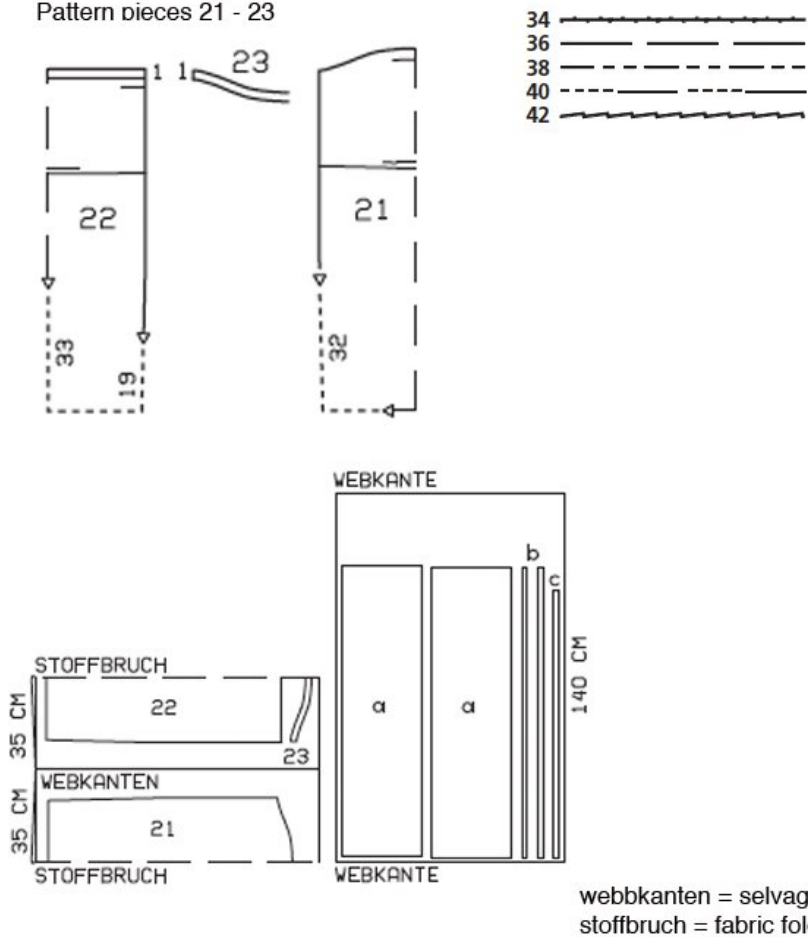
The stitching line for elastic casing (neck edge) on piece 21 is marked for size 34. For sizes 36-42, remark the stitching line at the same width.

burda style magazine pattern do not have seam allowance included.

Seam and hem allowances to be added: Seams and edges 1.5 cm (5/8 in), frill and band 1 cm (3/8 in), hem 4 cm (1 5/8 ins).

Step 2 — Cutting out

Pattern pieces 21 - 23

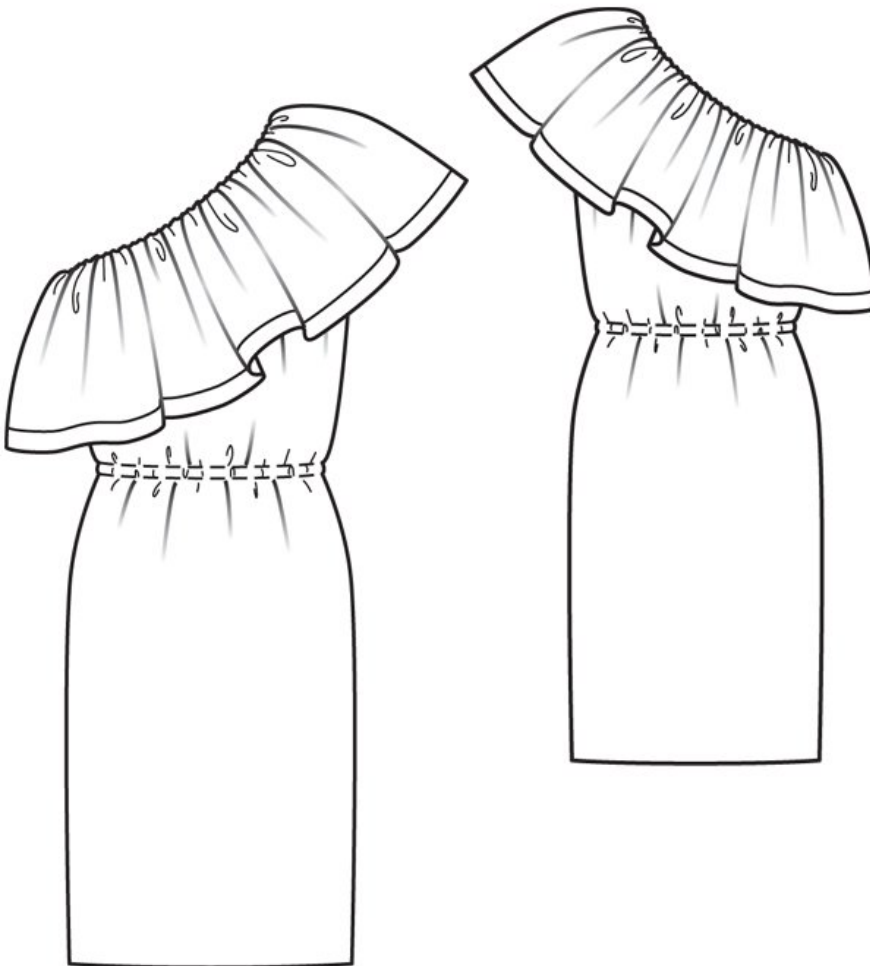


- 21 front, on a fold 1x
- 22 back, on a fold 1x
- 23 front neck facing, on a fold 1x

Also draft and cut the following pieces, not included in the pattern sheet:

- a) neck edge flounce, cut 2, each 110 115 115 120 120 cm (43 1/2 45 1/4 45 1/4 47 1/4 47 1/4 ins) long, 30.5 cm (12 ins) wide, incl. 2.5 cm (1 in) facing on upper edge,
- b) band for lower flounce edge, cut 2, each 110 115 115 120 120 cm (43 1/2 45 1/4 45 1/4 47 1/4 47 1/4 ins) long, 2 cm (3/4 in) wide,
- c) facing strip for waist casing, 97 101 105 109 113 cm (38 1/4 39 3/4 41 1/2 43 44 1/2 ins) long, 3.5 cm (1 1/2 ins) wide (incl. allowances).

Step 3 — Sewing



Stitch front facing to upper edge of front, right sides together. Trim seam allowances. Turn facing up and stitch to seam allowances, close to seam.

Stitch side seams (seam number 1). On one side seam, leave facing edge open, to pull elastic into. Press seam allowances open.

Turn facing on upper edges of front and back to inside, turn in, and stitch as marked, thereby forming casing. Cut a piece of 2 cm (3/4 in) wide elastic, 79 83 87 91 95 cm (31 1/4 32 3/4 34 1/4 36 37 1/2 in) long. Pull elastic into casing. Sew ends of elastic together to a circumference of 76 80 84 88 92 cm (30 31 1/2 33 34 3/4 36 1/4 ins).

For the waist casing, pin facing strip to inside of dress, over marked lines for elastic casing, and turn ends under. Baste facing strip in place then stitch from right side of dress, as marked. Pull 1 cm (3/8 in) wide elastic into casing and sew ends together to a circumference of 65 69 73 77 81 cm (25 3/4 27 1/4 28 3/4 30 1/2 32 ins).

Press hem allowance to inside and sew in place by hand.

On neck ruffle, stitch narrow edges together, on one seam leaving facing on upper edge open, for elastic. Press seam allowances open. Stitch band edges together. Press allowance on one long edge of band to inside. Work from inside to stitch band to lower flounce edge, with right side facing wrong side. Turn band to outside. Topstitch close to edge. Lay boning under band, overlapping ends. Edgestitch upper band edge in place.

On upper flounce edge, turn facing to inside and turn edge under. Stitch 2.5 cm (1 in) from edge, thereby forming elastic casing. Pull 2 cm (3/4 in) wide elastic into casing and sew ends together to a circumference of 80 83 86 89 92 cm (31 1/2 32 3/4 34 35 36 1/4 ins). Distribute flounce fullness evenly.

Lay right side seam of dress neck edge on one seam of flounce so that casings lie together, right sides facing, flounce points up. Beginning at side seam, pin casings together, 5 cm (2 ins) long, on each side. Stitch together along neck edge and along casing stitching line. Turn flounce down.

BurdaStyle

One Shoulder Flounce Dress 05/2012