

# Summer Top 05/2012

By: burda style magazine

<http://www.burdastyle.com/projects/summer-top-052012>

---



Summer top sewing pattern. An easy to sew top in two styles, A with a pleated neckline and B with a drapy neckline. Make it in a light cotton, linen or a soft jersey for summer.

## Materials

Top A: Silk satin, width: 130 cm (51 ins), length: 0.90 1.00 1.20 1.60 1.60 1.60 m (1 11/8 13/8 13/4 13/4 13/4 yds). Vilene Bias Tape/stay tape. (Note: See style 111 for the total fabric required to make both the top, 110 A, and skirt, 111.) Top B: Fine jersey, width: 140 cm (55 ins), length: 1.35 1.40 1.45 1.50 1.55 1.60 m (1

5/8 1 5/8 1 3/4 1 3/4 1 3/4 1 3/4 yds). Vilene Bias Tape/stay tape. A twin sewing machine needle.

---

## Step 1 — Preparations



Paper cut for ANSI A (German DIN A4) prints:

This pattern is printed on 8.5 × 11 sheets of plain paper. Do not scale or center pages before printing. Wait until all sheets are printed out before beginning to tape them together. **Do not cut out pattern pieces yet**— Arrange the sheets on a large, hard, flat surface so that they fit together, matching up like numbers and letters (i.e. 6A to 6A). To tape pattern together, fold under the margin of one piece (6A) and tape right against the line of it's matching number/letter (6A).

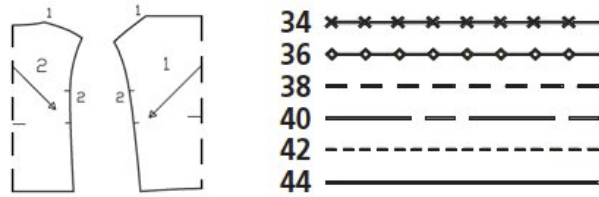
Trace the pattern pieces from the pattern sheet following the lines and markings for the correct size and style (A or B). Note different grain lines for style A and B.

**burda style magazine pattern do not have seam allowance included.**

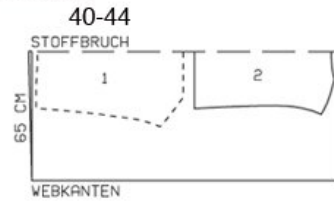
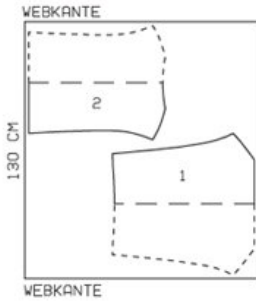
Seam and hem allowances to be added: Seams, edges, and hem 1.5 cm (5/8 in).

---

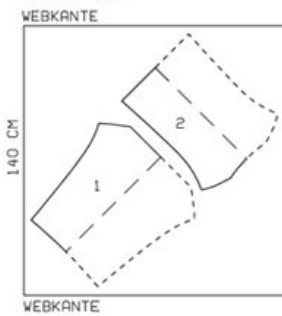
## Step 2 — Cutting out



Style A, silk satin 130 cm width  
Sz. 34-38



Style B, fine jersey, 140 cm width  
Sz. 34-44



webbkanten = selvage  
stoffbruch = fabric fold

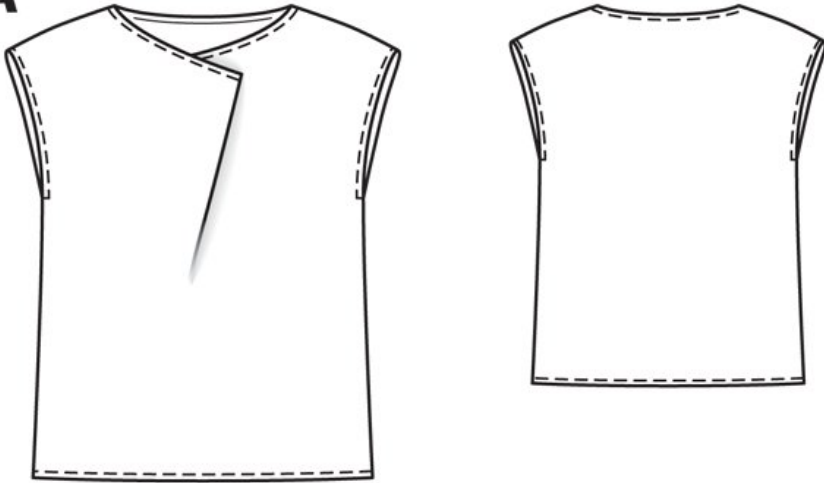
Style A, B:

- 1 front, on a fold 1x
- 2 back, on a fold 1x

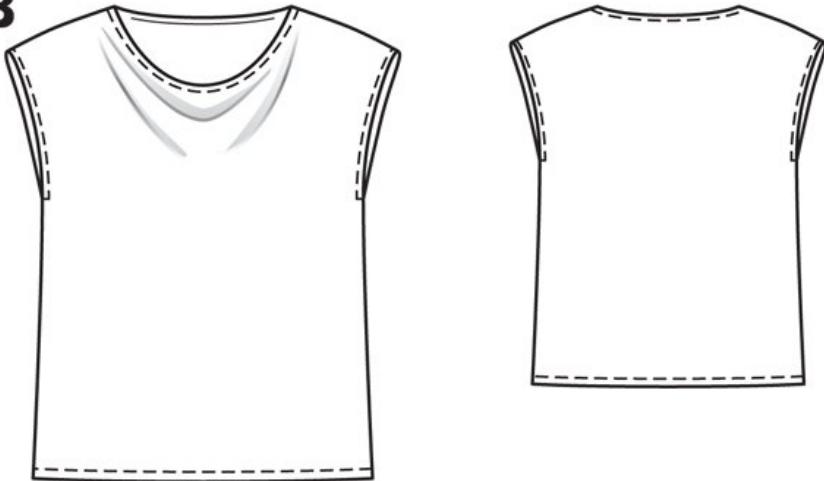
Vilene Bias Tape/stay tape: Iron to wrong side of front shoulder edges.  
Top B: Also iron to wrong side of back neck edge.

### Step 3 — Sewing

**A**



**B**



Style A

Press allowances on neck edges to inside, turn edges under to a width of 7 mm (1/4 in), and stitch.

Stitch shoulder seams. Trim seam allowances to 7 mm (1/4 in), neaten together, and press onto back.

Stitch side seams (seam number 2). Press seam allowances open. Press allowances on armhole edges to inside, turn edges under to a width of 7 mm (1/4 in), and stitch.

Press hem allowance to inside, turn edge under, and stitch.

Try top on. Fold extra fabric on front neck edge to one side and pin in place. Sew upper fold ends (on outside and inside) in place by hand.

Style B

Sew as for style A. Press hem allowance to inside. Work from right side and use the twin machine needle to stitch hem 1 cm (3/8 in) from lower edge. Omit fold at centre front.

---

**BurdaStyle**

Summer Top 05/2012