

# Liz

By: burdastyle

<http://www.burdastyle.com/projects/liz>

---



If you have a couple of hours on your hands and some rests of fabrics, this is the perfect project for you. The princess seams are ideal to get a perfect fit, since you can just try it on and adjust it once you have the main bodice assembled. The blouse doesn't have separate sleeves but an extension that works like a cap sleeve, which saves a lot of time and hassle.

## Materials

Linen blend, buttons

---





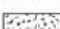
## Step 1

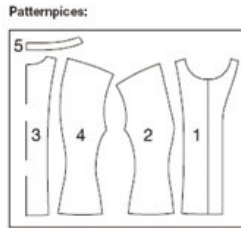
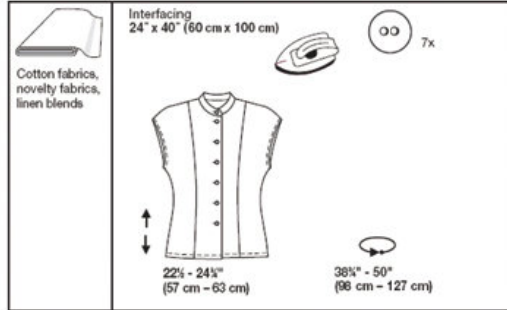
**burda Download-Pattern  
Blouse 7936 - Instructions**

●●●□  
easy

semi fitted

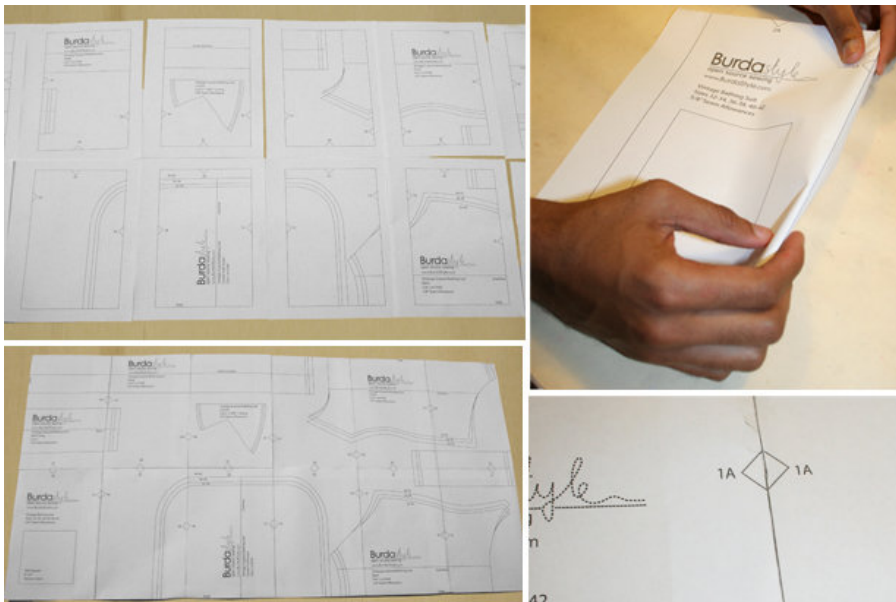
		45 ins / 114 cm								55 ins / 140 cm							
burda sizes		36	38	40	42	44	46	48	36	38	40	42	44	46	48		
		yds		1 1/2		1 1/4		1 1/4		1 1/2		1 1/4		1 1/4			
		m		1.25		1.25		1.40		1.50		1.50		1.25			
* without nap																	

-  right side
-  wrong side
-  interfacing
-  lining
-  batting



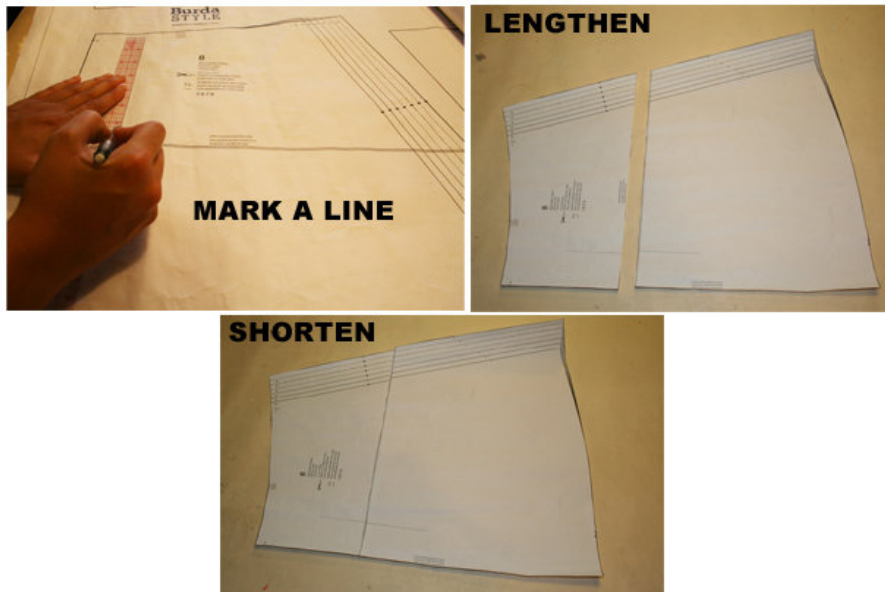
- 1 center front piece 2x
- 2 Sidway front piece 2x
- 3 Center back piece 1x
- 4 Sidway back piece 2x
- 5 Stand-up collar 2x

## Step 2



The patterns can be printed out at the copy shop. If you decide to print them at home, follow the instructions: Paper cut for ANSI A (German DIN A4) prints: The patterns are printed out on 20 sheets with a thin frame. Wait, until all sheets are printed out. Arrange the sheets so that they fit together (see extra page with the overview of the prints). Cut off the single sheets on the upper and right edge along the thin frame lines. Begin with the left lower sheet and then glue the parts in the frame lines together precisely.

## Step 3



### ADJUST PATTERN SIZES

Select your size according to the Burda-dimension table: Dresses, blouses, jackets and coats according to the bust size, trousers and skirts according to the hip width. Change the patterns according to size ( inches or cm) if necessary, to fit your measurements if they deviate from the Burda-dimension table. Cut out the pattern according to your size (a).

Refer to our *Adjust patterns for mixed sizes* technique

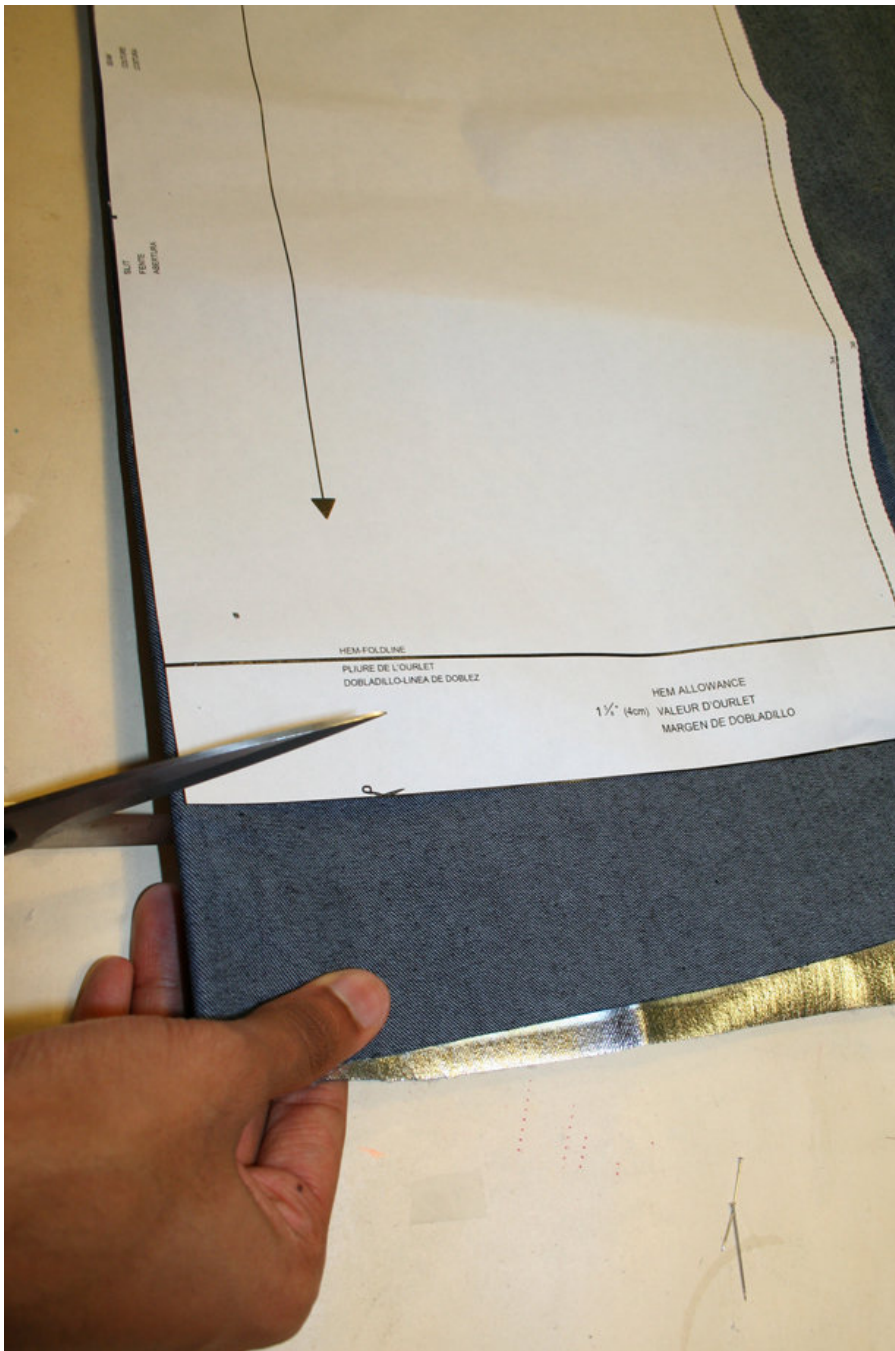
### LENGTHENING OR SHORTENING THE PATTERN PIECES

Our pattern is calculated for a height of 5â€™ 6â€™ (168 cm). If you are taller or shorter, you may adjust the pattern to fit your size at the lines marked “lengthen or shorten here”. Thus the fit is preserved. Extend all pattern pieces along the cutting lines for the same length. (b)

How to lengthen and shorten pattern pieces: Cut the pattern pieces along the marked lines. To lengthen, slide the two halves of the pattern piece as far apart as necessary. To shorten, overlap the two halves of the pattern piece as far as necessary. Even out the side edges. ©

---

## Step 4



CUTTING OUT FOLD (â’ â’ â’ â’ ) means: here is the center of a pattern piece but never a cut edge or a seam. The piece should be cut double, with the fold line forming the centre line. Pattern pieces that are outlined with a broken line in the cutting diagrams are to be placed face down on the fabric. The cutting diagrams on the pattern sheet show how the pattern pieces should be placed on the fabric. For a single layer of fabric, the pattern pieces are pinned to the right side of the fabric. For double layers of fabric, the right sides are facing and the pattern pieces are pinned to the left side. The pattern pieces that are shown in the cutting diagram, extending over the fold of the fabric, should be cut last from a single layer of fabric. (a) Important: Trim the skirt pattern pieces from the single layer of fabric, the pattern pieces are pinned to the right side of the fabric, the labeled pattern side on top (see cutting diagram).

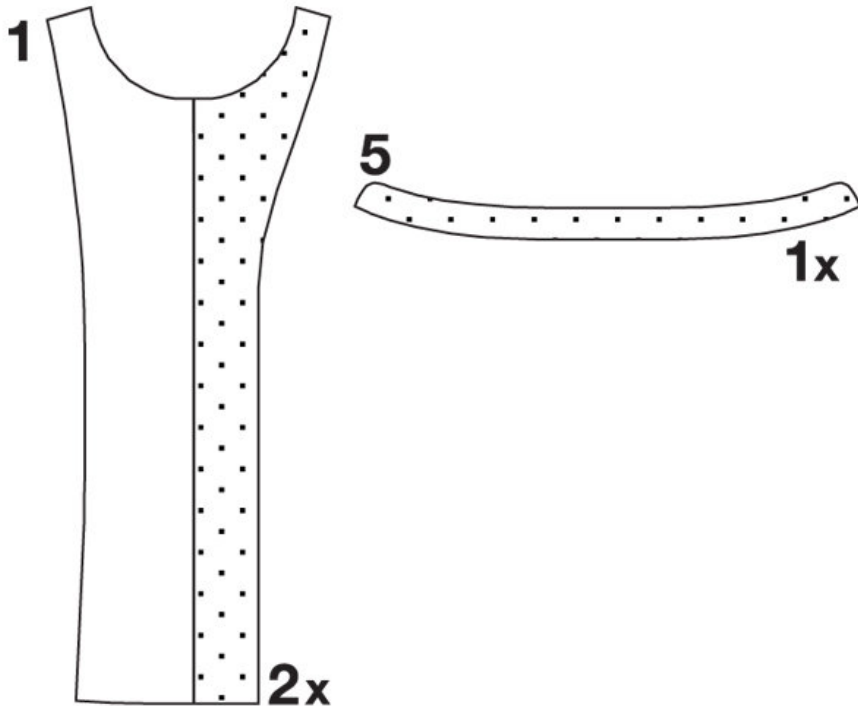
Cut out the pattern according to your size. Sizes is 6 â’ 16 (Burda Sizes: 38 to 48) The buttonholes in part 1

are marked according to size 4. For further sizes mark the top button hole in the same space length to the neckline like size 4. The position of the lowest button hole will be the same for all sizes. Distribute the other button holes equally. (b)

---

## Step 5

### INTERFACING



SEAM AND HEMLINE ALLOWANCES are included on an average: why on an average, they are included  $5/8$ " (1.5 cm) for all edges and seams. Use BURDA carbon paper to transfer all pattern lines and markings to the left side of the fabric pieces. You will find instructions in the packet.

#### Interfacing

Cut interfacing according to the drawing and press onto the left fabric side

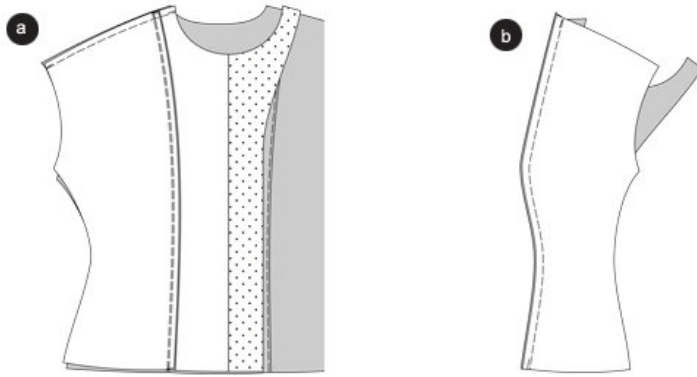
#### SEWING

When sewing the right fabric sides are facing.

Transfer all lines on the pattern using a basting stitch to the right fabric side.

---

## Step 6



## Blouse

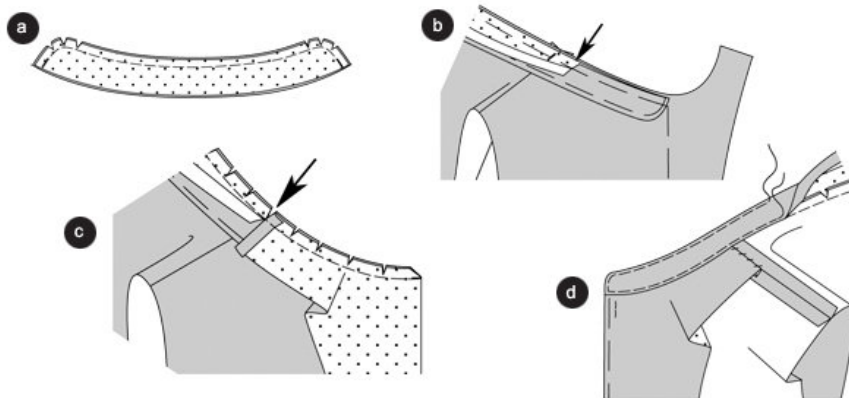
Position the sideways front pieces on top of the center front pieces, right sides facing, baste princess seam (seam 10) and stitch. (a)

Baste the back princess seam in the same way (seam 2) and stitch. Trim allowances, neaten altogether and press towards the center pieces. Stitch the dividing stitches narrowly, thus enclosing the allowances when stitching.

### Shoulder seams

Position the front piece onto the back piece, the right sides facing. Baste shoulder seams (seam 3). Princess seams meet. Stitch. Neaten allowances and press apart. (b)

## Step 7



### Stand up collar

Pin stand up collar pieces on top of each other, the right sides facing (a)

Pin the stand up collar onto the neckline, the right sides facing (seam 6), the notches meet the shoulder seams. The collar piece including the interfacing is laying on the front and back pattern piece. Cut in the inner stand up collar (without interfacing) at the notches (arrow). Baste stand up collar at the back neckline, only the outer collar piece. (b)

Neaten the truncated facing of the front pieces, turn outwards and baste over the collar. Tuck in the top facing

edges at the shoulder seams, stitch facing and outer collar piece. Trim allowances, cut in and cut the corners bias wise. Cut allowances at the cross lines, following the arrows, along the shoulder seams. ©

Fold inwards and baste the facing, press. Press the allowances of the back neckline in towards the collar. Tuck in the inner collar piece and baste. Stitch the collar narrowly all around, thereby stitching the inner piece. Sew the facing onto the shoulder seams by hand. (d)

---

## Step 8

Sleeve hem

Fold inwards and press the truncated hem, tuck in and stitch narrowly. (a)

Side seams

Position front piece onto the back piece, the right sides facing, baste side seams (seam 4) and stitch. Trim allowances and press apart (b). Stitch the allowances onto the sleeve hem ©.

Hem

Place facing on top. Fold and press the hem inside, fold again and baste. Turn the facing over again. Stitch the bottom edge narrowly about ¼" from the edge, at the same time enclose hem and facing. Stitch the front edge narrowly. (d)

Insert BUTTON HOLES into the right side edge and the stand-up collar. Apply the buttons into the front center of the left front piece.

---

**BurdaStyle**

Liz