

Hikaru

By: burdastyle

<http://www.burdastyle.com/projects/hikaru>



Need a jacket strong enough to match your determined personality! Try the Hikaru jacket, with its military style, yet feminine fit. It has a zip front, but with details like a buttoned cuff and decorative buttons along the princess lines, this jacket is practical and pretty!

Materials

Felted Fabrics, Wools, Tweeds

Step 1

**burda Download-Pattern
Jacket 8020 - Instructions**

●●●□
average

semi fitted

burda sizes	45 ins / 114 cm										55 ins / 140 cm									
	34	36	38	40	42	44	46	34	36	38	40	42	44	46						
A	2 1/4	2 1/4	2 1/4	2 1/4	2 1/4	2 1/4	2 1/4	2 1/4	2 1/4	2 1/4	2 1/4	2 1/4	2 1/4	2 1/4						
m	1.95	1.95	2.10	2.10	2.10	2.30	2.30	1.90	1.90	1.95	1.95	1.95	1.90	1.90						
A Lining	1 1/2	1 1/2	1 1/2	1 1/2	1 1/2	1 1/2	1 1/2	1 1/2	1 1/2	1 1/2	1 1/2	1 1/2	1 1/2	1 1/2						
m	1.30	1.30	1.30	1.50	1.50	1.50	1.50	1.10	1.10	1.10	1.10	1.15	1.15	1.20						

→ with nap

Interfacing:
36" x 30"
(90 cm x 75 cm)

24"
(61-64 cm)

20"
(50 cm)

36 1/2" - 48"
(93-122 cm)

right side

wrong side

interfacing

lining

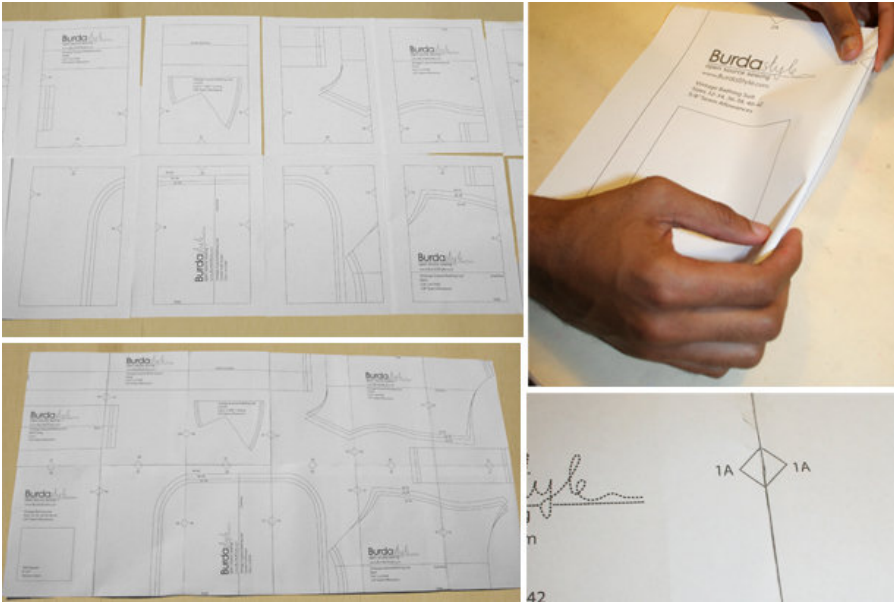
batting

Patternpieces:

Pattern Pieces

- A 1 Front 2x
- A 2 Center Front 2x
- A 3 Side Front 2x
- A 4 Center Back 2x
- A 5 Side Back 2x
- A 6 Front Peplum 2x
- A 7 Back Peplum 1x
- A 8 Upper Sleeve 2x
- A 9 Bottom sleeve 2x
- A 10 Cuff 2x
- A 11 Front Facing 2x
- A 12 Back Facing 1x
- A 13 Stand Collar 2x
- A 14 Pocket 2x
- A 15 Flap 2x
- A 16 Tab 2x
- Lining Pieces:
- A 22 Center Front 2x
- A 23 Side Front 2x
- A 24 Center Back 2x
- A 25 Side Back 2x
- A 26 Front Peplum 2x
- A 27 Back Peplum 1x
- A 28 Pocket 2x

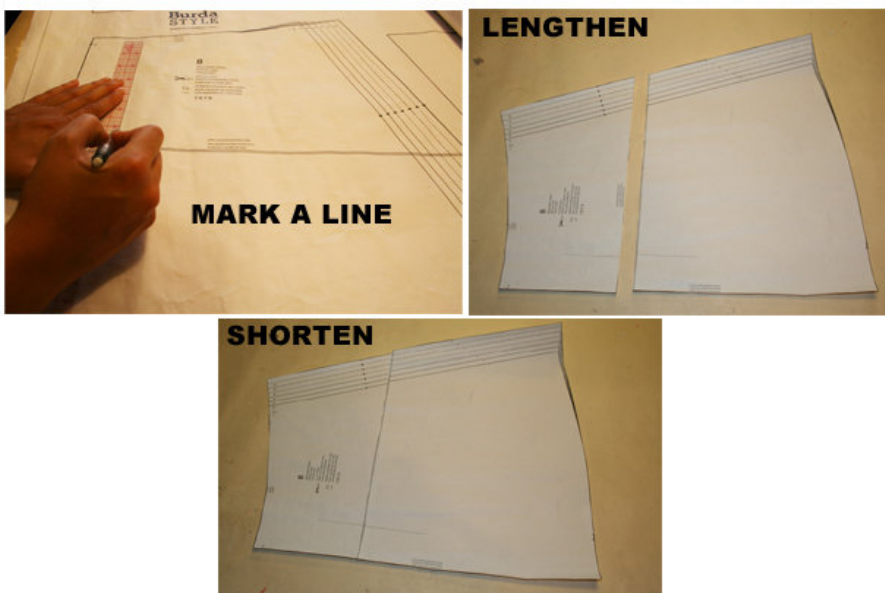
Step 2



The patterns can be printed out at the copy shop. If you decide to print them at home, follow the instructions: Paper cut for ANSI A (German DIN A4) prints:

The patterns are printed out with a thin frame. Wait until all sheets are printed out. Arrange the sheets so that they fit together (see additional page with the overview of the prints). Fold the single sheets on the upper and right edge along the thin frame lines. Begin with the left lower sheet and then tape the frame lines together precisely.

Step 3



ADJUST PATTERN SIZES

Select your size according to the Burda-dimension table: dresses, blouses, jackets and coats according to the bust size, trousers and skirts according to the hip width. Change the pattern to fit your measurements if they

deviate from the Burda-size chart. Cut out the pattern according to your size.
Refer to our “ Adjust patterns for mixed sizes” technique

LENGTHENING OR SHORTENING THE PATTERN PIECES

Our pattern is calculated for a height of 5’ 6” (168 cm). If you are taller or shorter, you can adjust the pattern pieces along the lines marked “lengthen or shorten here”. This way the proper fit is maintained.
Always adjust all pattern pieces along the same line to the same degree .

How to lengthen and shorten pattern pieces:

Cut the pattern pieces along the marked lines

To lengthen, slide the two halves of the pattern piece as far apart as necessary.

To shorten, overlap the two halves of the pattern piece as far as necessary. Blend the side edges.

Step 4



CUTTING OUT

FOLD () means: Cut on the fold, the fold being the center of the pattern piece, but never a cut edge or seam. The piece should be cut double, with the fold line forming the center line. Pattern pieces that are outlined with a broken line in the cutting diagrams are to be placed face down on the fabric. The cutting diagrams on the pattern sheet show how the pattern pieces should be placed on the fabric.

The cutting diagrams show the placement of the pattern on the fabric.

For a single layer of fabric, the pattern pieces are pinned to the right side. For double layers of fabric, the right sides are facing and the pattern pieces are pinned to the wrong side. The pattern pieces that are shown extending over the fold of the fabric in the cutting diagram should be cut last from a single layer of fabric.

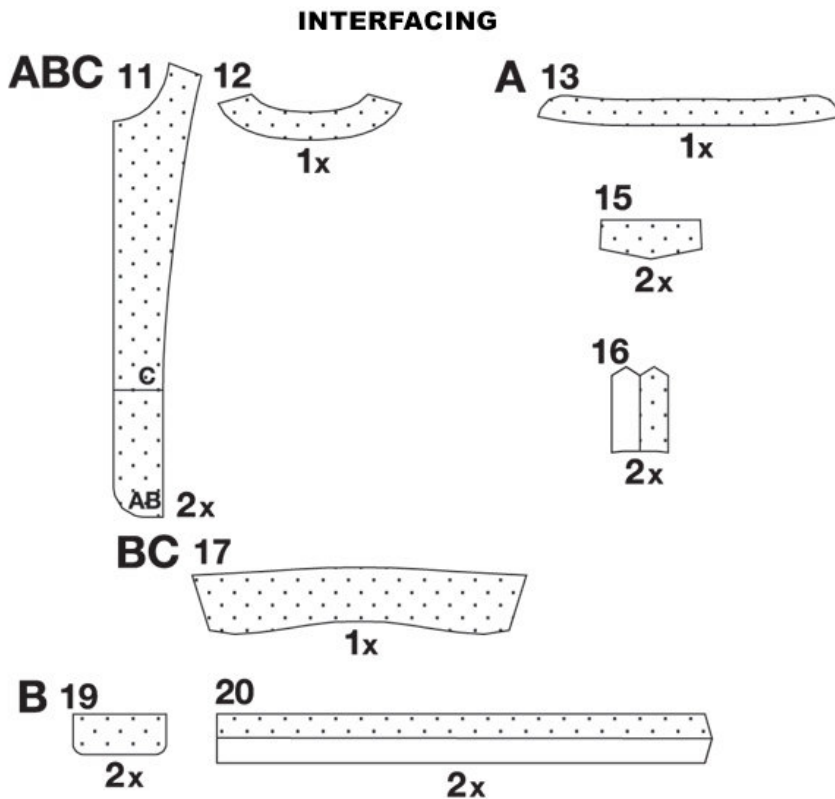
A

Cut out the following pattern pieces in the required size from the pattern sheet:

For the JACKET view A pieces 1 to 16 and 22 to 28, Sizes 4 to 12 (36 to 46)

For view A, mark the x for the button placement on piece 1 the same distance from the panel seam as for size 2 (34). Mark the top buttonhole in the same distance from upper edge as for size 2 (34), the buttonholes are placed the same way for all sizes. Mark the other buttonholes evenly in between.

Step 5



SEAM AND HEMLINE ALLOWANCES are included on an average:

1 5/8" 8" (4 cm) for hem, 5/8" (1.5 cm) for all edges and stitches. Using BURDA copying paper, transfer the lines and signs of the pattern onto the wrong side of the fabric. Instructions can be found in the packaging.

Sewing

While sewing, the right sides of the fabric are facing.

Transfer all lines of the pattern onto the right side of the fabric using basting stitches.

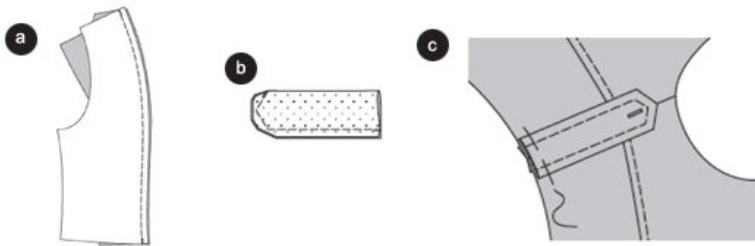
INTERFACING

Cut interfacing as illustrated and iron on the left side of the fabric pieces.

LINING

Use pieces 8, 9, 15 and 22 to 28 to cut lining for view A.

Step 6



A JACKET

Back Panel Seams

Position the right sides of the side back pieces next to the center back piece. Baste panel seams (seam number 4) and stitch. Press allowances towards the center back. Topstitch the seams 1 1/4" (0.7 cm) wide. (a)

Center Back Seam

Position the right sides of the back pieces together. Stitch center seam. Press allowances towards the side. Topstitch center seam 1 1/4" (0.7 cm) wide.

Front Panel Seams

Baste front panel seams (seam numbers 1 and 2) and stitch (see also illustration 1). Press allowances towards the center front. Topstitch seams 1 1/4" (0.7 cm) wide.

Baste shoulder seams (seam number 4), matching panel seams. Stitch. Press allowances apart.

Position the front facings onto the back facing. Stitch shoulder seams (seam number 6). Press seam allowances apart.

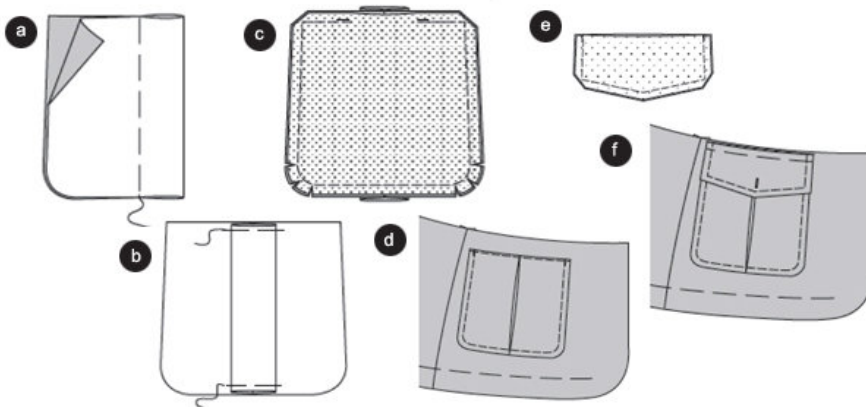
A

Shoulder Tabs

Fold tabs on FOLD LINE, right side facing. Stitch edges together as illustrated. Trim allowances, trim corners diagonally. Turn tabs, baste edges and press. Topstitch tabs 1 1/4" (0.7 cm) wide (b).

Apply the BUTTONHOLE. Pin tabs over the shoulder seams, baste on edge of armhole from marking ©.

Step 7



A

Side Seams

Lay fronts right sides together with back. Baste side seams (seam number 8) and stitch. Press allowances apart.

AB

Peplum

Lay front peplum piece right sides together with back peplum piece. Stitch side seams (seam number 9). Press allowances open.

A Pockets

Fold pockets lengthwise, right side facing in. Baste side pleat lines together. Press inverted pleat. (a) Baste pleat at the top and bottom (b).

Pin the right sides of the pocket lining onto the pocket. Baste and stitch edges together, leaving an open hole to turn it inside out later. Secure ends of stitching. Trim allowances, trim rounding. Turn pocket, baste edges and press. Topstitch upper edge, stitching up opening. ©

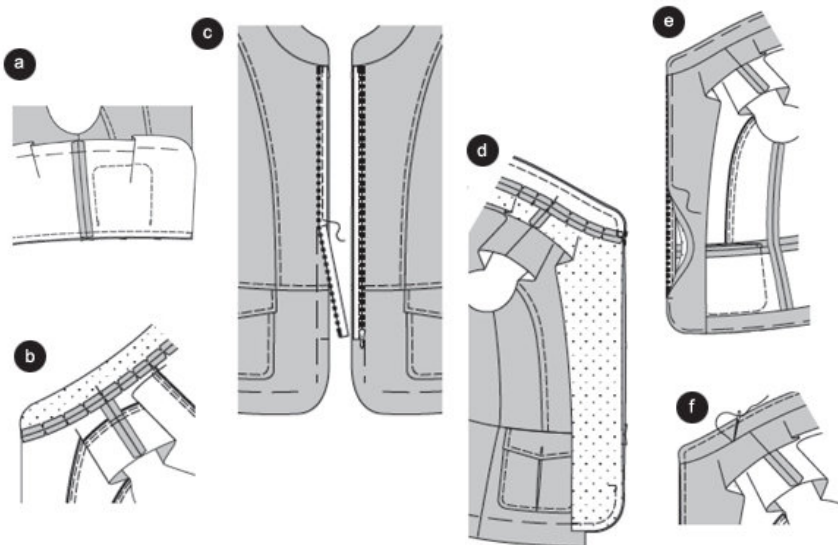
Baste pockets on front peplum at placement line and stitch 1 1/4" (0.7 cm) wide. (d)

Flaps

Pin the right sides of the flap lining pieces onto the fabric flaps. Stitch side and lower edges together. Trim allowances, trim corners diagonally. Turn flaps, baste edges and press. Topstitch flaps 1 1/4" (0.7 cm) wide. Baste open edges together. (e)

Baste flaps on upper edge of peplum over the pockets. (f)

Step 8



Stitch Peplum

Baste the right sides of the peplum onto the lower edge of jacket (seam number 10), matching side seams. Stitch, catching in flaps. Press seam allowances up. Topstitch seam 1 1/4" (0.7 cm) wide. (a)

A Stand Collar

Stitch interfaced stand collar piece onto the edge of the neckline (seam number 5). Stitch other stand collar piece onto the facing: likewise, the matching markings of the collar meet the shoulder seams. Trim seam allowances, trim curves and press apart. (b)

Zipper

Open the zipper and baste it facing down onto the front edges from the collar downwards. Important: To have the zipper concealed on the finished garment the zipper bands and teeth must be positioned onto the allowances. Fold the ends of the zipper bands inwards. Stitch zipper using the zipper foot of your sewing machine. ©

Baste stand collar pieces together for view A and baste facings on fronts. Baste collar pieces together along the joining seam. Stitch. Baste facings on fronts below zipper. Stitch. Trim seam allowances, also on collar. (d)

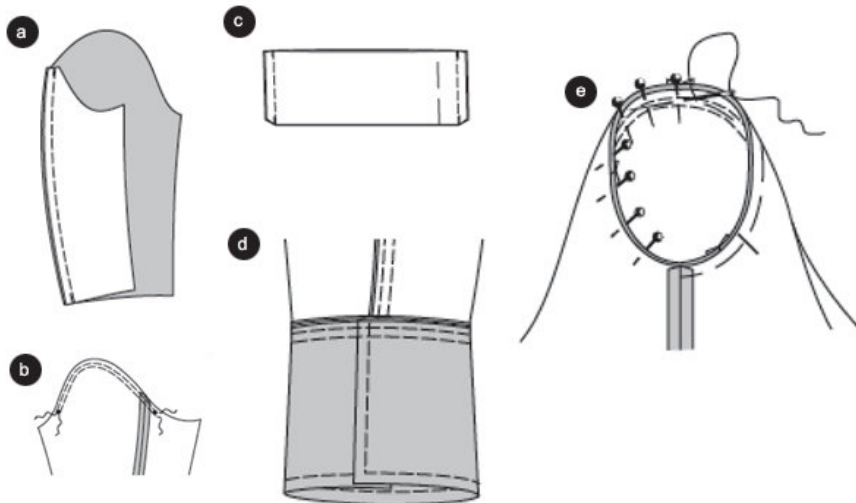
Turn collar. Turn facings and hem to the inside. Baste edges, press. Turn allowances including the zipper at the front edges towards the inside. Turn in the facings and baste onto the zipper bands. Topstitch the front edges (use a zipper foot) and collar 1 1/4" (0.7 cm) wide, enclose the zipper and the facings. End line of stitching

at inside edges of facing (e). Pin the collar seams together and sew them together by hand from the left side (f).

ABC

Stitch hem loosely by hand.

Step 9



Sleeves

Position the right sides of the under sleeve onto the upper sleeve. Baste back sleeve seam (seam number 11) and stitch. Press seam allowances onto upper sleeve. Topstitch seam 1 1/4" (0.7 cm) wide. (a)

To ease sleeve caps, stitch two closely spaced lines of machine basting (longest stitch setting) from _ to _
Fold sleeves lengthwise, stitch front sleeve seams (seam number 12). Press seam allowances apart. (b)

Cuff

Fold cuff on FOLD LINE, right facing in. Stitch side edges together. Trim allowances, trim corners diagonally. Turn cuff, baste edges, press and topstitch 1 1/4" (0.7 cm) wide. Apply 3 BUTTONHOLES into the front edge of cuff for view A the same distance from edge as marked for size 2. Pin front edge on back edge at placement line. Baste open edges together. ©

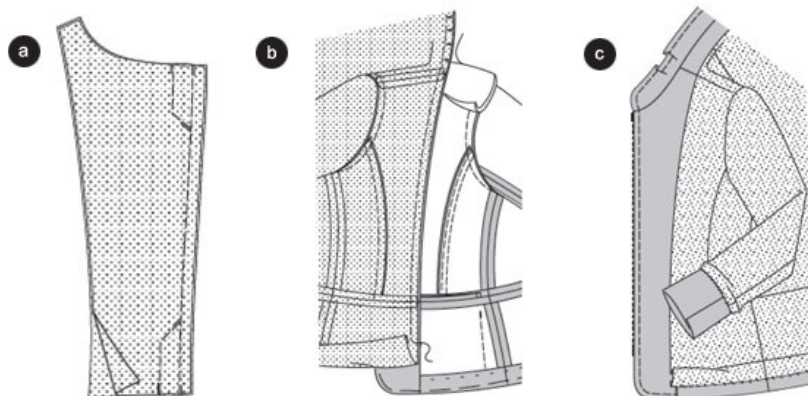
Baste cuff right sides together with lower edge of sleeve (seam number 13). Front edge meets with back sleeve seam. Stitch. Press allowances onto sleeve. Topstitch seam 1 1/4" (0.7 cm) wide. (d)

Setting in Sleeves

Tighten bobbin threads slightly to ease sleeve caps.

Pin sleeve into armhole right sides facing. When setting in sleeves, 4 points are important for proper fit:
_ Match cross marks 14 on upper sleeve and front. Match marking on under sleeve with side seam. Match marking at sleeve cap with shoulder seam. Distribute fullness evenly to avoid forming tucks. Baste and stitch sleeve from sleeve side. Press seam allowances onto sleeve. Try the jacket on. Insert SHOULDER PADS, pin and sew them onto the shoulder seam allowances. (e)

Step 10



LINING / Ease Pleat

Lay the right sides of the back pieces together. Stitch center seam. Stitch along the marked lines to ease the pleat. Press the pleat towards one side. Stitch seams on lining pieces, the same seam numbers meet. Set sleeves into lining. Stitch peplum to lining. Press allowances at lower edge of lining and lower edges of sleeves towards the inside. (a)

Pin the right sides of the lining onto the facing (seam number 20), shoulder seams meet. Stitch, beginning and ending about 4" (10 cm) above hem edge. Fix the lining at back neck edge. Press seam allowances onto lining. Pin lining inside the jacket, left sides facing. (b)

Push the lower edge of jacket lining up and sew it onto the hem. Baste sleeve linings onto the cuffs by hand. Illustration shows view A. Allow an extra length of lining to overlap. Sew lining at front facings. Sew facings at hem.

Sew the BUTTONS onto the front, pockets and onto the cuffs. ©

