

Jenny Variation C: Skirt with Suspenders

By: burdastyle

<http://www.burdastyle.com/projects/jenny-variation-c-skirt-with-sus>



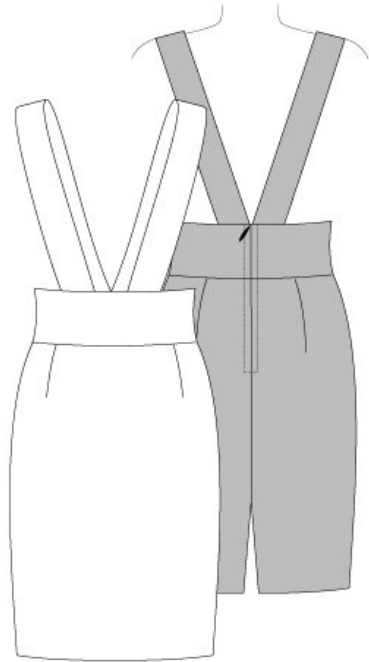
Make your basic skirt a little bit more sassy with suspenders! We chose a rich dark purple velvet to make this a winter-y style. Paired with a crisp white blouse this look is suited for the office and going out after. The Jenny pattern download includes instructions & supplemental pattern pieces for 4 projects: The basic skirt,

the skirt with bow, the skirt with suspenders (pictured above), and a dress! See the extras below: The Basic Skirt Variation B: Skirt with Bow Variation D: Make it into a dress!

Materials

Light-weight non-stretch fabrics, Interfacing 36" x 16" (EU 90 x 40 cm), Zipper 12" (EU 30 cm), 3 Buttons for dress option

Step 1 — PATTERN



Pattern

1 Front skirt panel 1x

2 Back skirt panel 2x

3 Front waistband 2x

4 Back waistband 4x

6 Suspender piece 4x

Fabrics: Light wool fabrics

Other: Interfacing 36" x 16" (EU 90 x 40 cm)

Zipper 12" (EU 30 cm)

The patterns can be printed out at the copy shop. If you decide to print them at home, follow these instructions:

Paper cut for ANSI A (German DIN A4) prints:

The patterns are printed out on 27 sheets with a thin frame. Wait until all sheets are printed out. Arrange the sheets so that they fit together (see additional page with the overview of the prints). Fold the single sheets on the upper and right edge along the thin frame lines. Begin with the left lower sheet and then tape the frame lines together precisely.

Step 2 — ADJUST PATTERN SIZES



ADJUST PATTERN SIZES

Select your size according to the Burda-dimension table: dresses, blouses, jackets and coats according to the bust size, trousers and skirts according to the hip width. Change the pattern to fit your measurements if they deviate from the Burda-size chart. Cut out the pattern pieces according to your size.

Refer to our *Adjust patterns for mixed sizes* technique.

LENGTHENING OR SHORTENING THE PATTERN PIECES

Our pattern is calculated for a height of 5'6" (168 cm). If you are taller or shorter, you can adjust the pattern pieces along the lines marked "lengthen or shorten here". This way the proper fit is maintained. Always adjust all pattern pieces along the same line to the same degree.

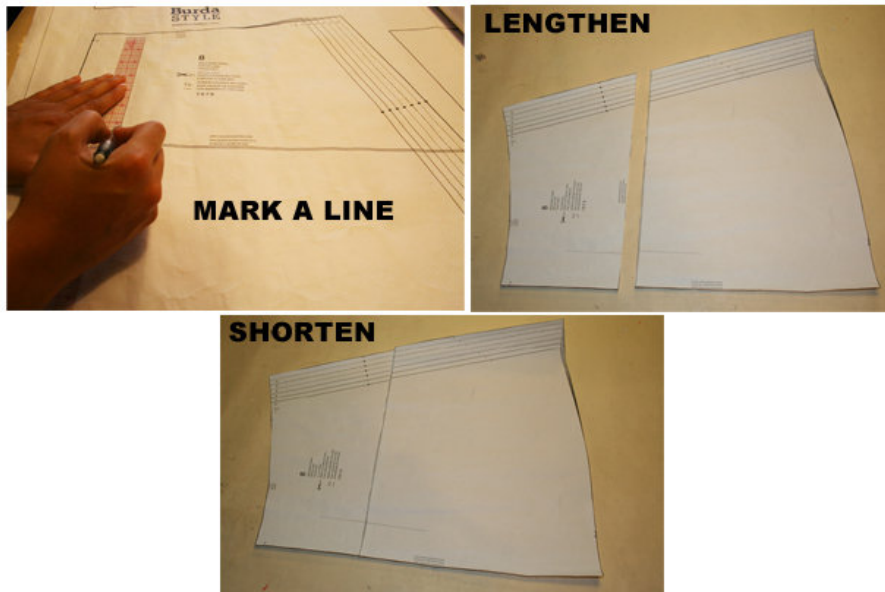
How to lengthen and shorten pattern pieces:

Cut the pattern pieces along the marked lines

To lengthen, slide the two halves of the pattern piece as far apart as necessary.

To shorten, overlap the two halves of the pattern piece as far as necessary. Blend the side edges.

Step 3 — CUTTING OUT



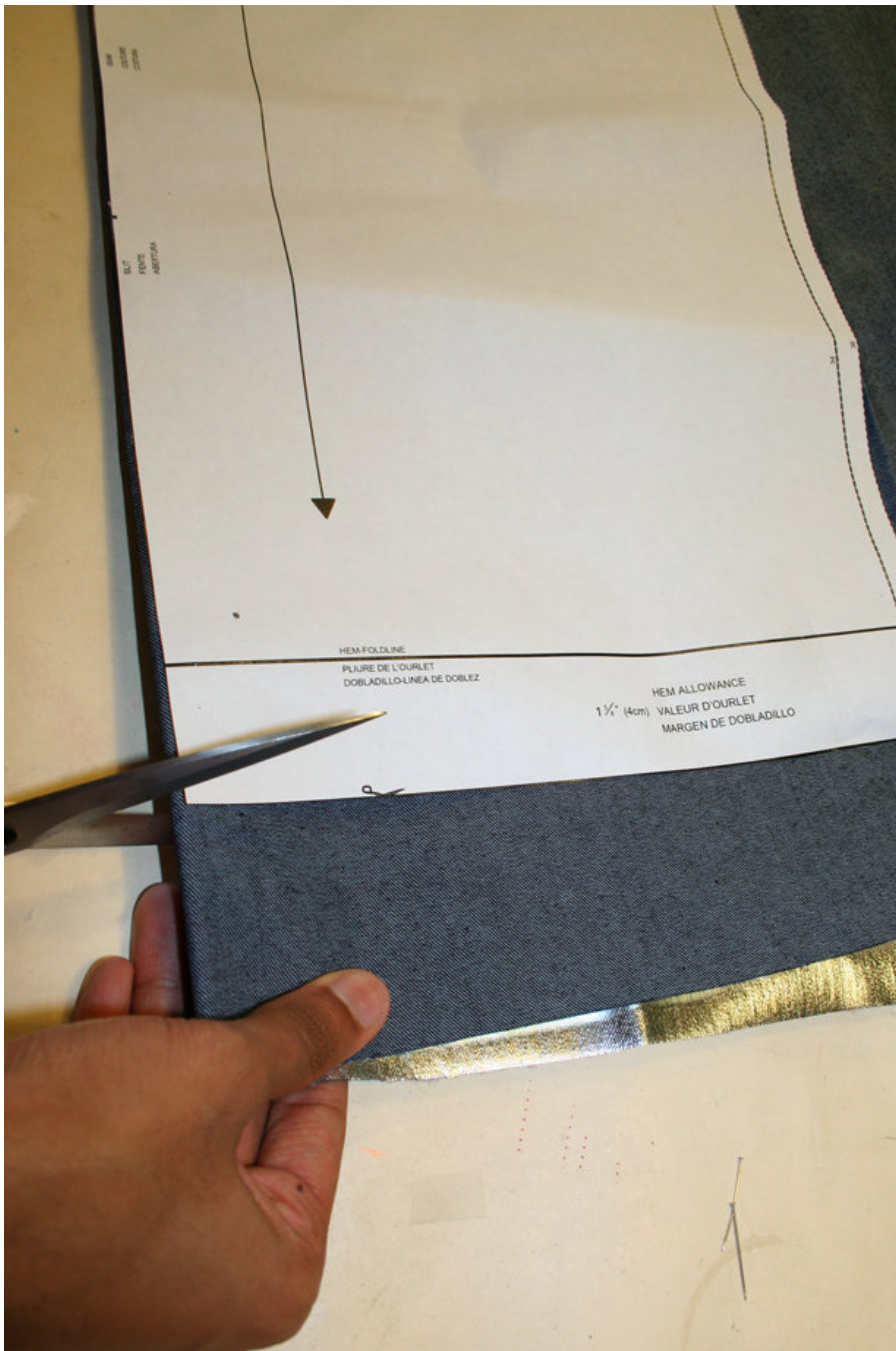
CUTTING OUT

FOLD (— — — —) means: Cut on the fold, the fold being the center of the pattern piece, but never a cut edge or seam. The piece should be cut double, with the fold line forming the center line. Pattern pieces that are outlined with a broken line in the cutting diagrams are to be placed face down on the fabric. The cutting diagrams on the pattern sheet show how the pattern pieces should be placed on the fabric.

The cutting diagrams show the placement of the pattern on the fabric.

For a single layer of fabric, the pattern pieces are pinned to the right side. For double layers of fabric, the right sides are facing and the pattern pieces are pinned to the wrong side. The pattern pieces that are shown extending over the fold of the fabric in the cutting diagram should be cut last from a single layer of fabric.

Step 4 — SEAM & HEM ALLOWANCES



Disregard steps 4, 5, 8, 9, 11 and 12 ON ORIGINAL PRINTED INSTRUCTIONS

INSTRUCTIONS BELOW ARE CORRECT FOR THE JENNY DRESS VARIATION.

SEAM AND HEMLINE ALLOWANCES are included on an average:
 1 5/8" 8" (4 cm) for hem, 5/8" (1.5 cm) for all edges and stitches. Using BURDA copying paper, transfer the lines and signs of the pattern onto the wrong side of the fabric. Instructions can be found in the packaging.

LINING

Cut the lining according to pattern pieces 1 and 2. See cutting diagram.

INTERFACING

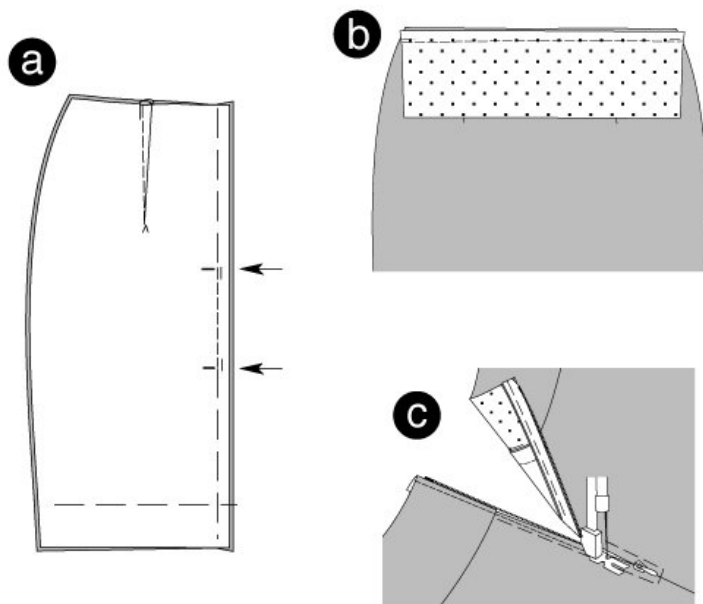
Cut out the interfacing pieces and press onto the wrong side of the fabric.

Sewing

While sewing, the right sides of the fabric are facing.

Transfer all lines of the pattern onto the right side of the fabric using chalk.

Step 5 — SKIRT



SKIRT

Pin the darts on front and back skirt panel. Stitch to a point. Knot thread ends. Press the darts towards the center of front and back skirt pieces.

CENTER BACK SEAM / SLIT

Position the back skirt panels together, right sides facing. Pin center seam. Stitch center seam between slit markings. Secure seam ends. Keep slit pinned. Neaten allowances and remove the pins. (a)

WAISTBAND

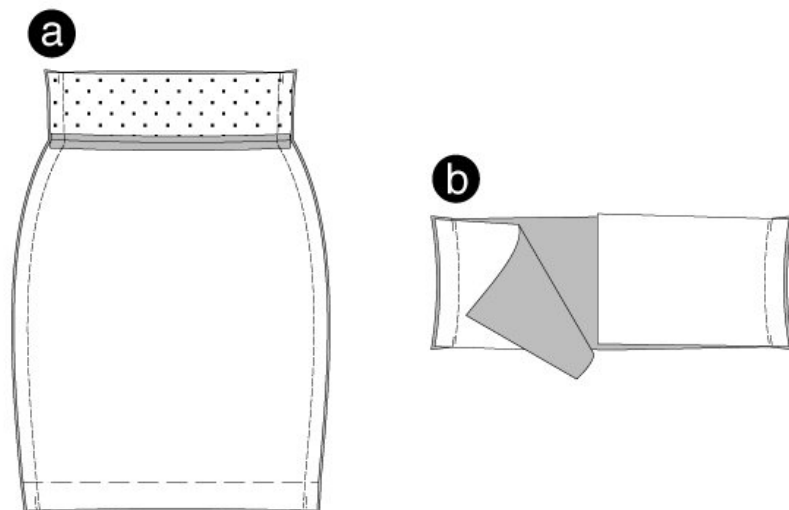
Position the interfaced front waistband piece and the front skirt panel together, right sides facing. When doing so, slightly stretch the waistband. Stitch. In the same way, stitch the interfaced back waistband piece on the back skirt panel (seam number 3). Press allowances apart. (b)

ZIPPER

Position the zipper under the slit edge in a way that the little teeth are hidden. Stitch the zipper using a zipper foot for your sewing machine. ©

Disregard points 4 and 5

Step 6 — SIDE SEAMS

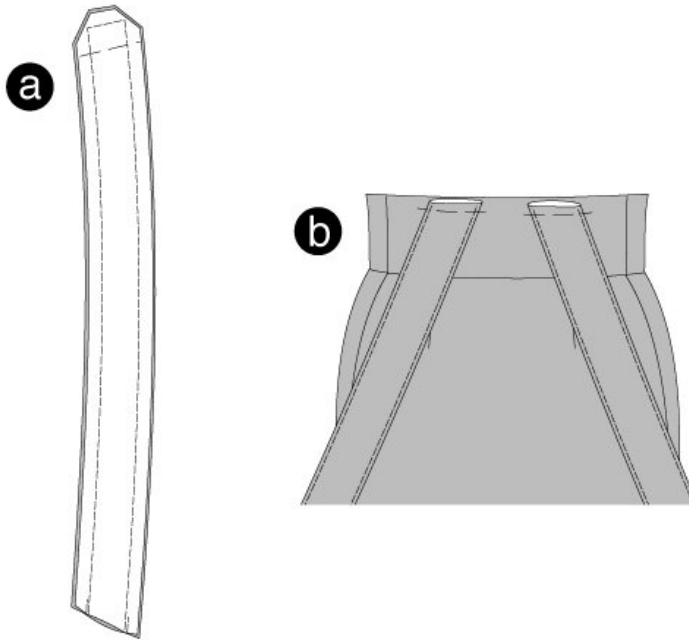


SIDE SEAMS

Position the front and back skirt panels together. Pin side seams (seam numbers 1, 2). The seam lines of the back and front waistbands meet. Stitch. Trim allowances and press apart. (a)

Position the back and front waistband pieces together, right sides facing. Stitch side seams. Press allowances apart. (b)

Step 7 — SUSPENDERS

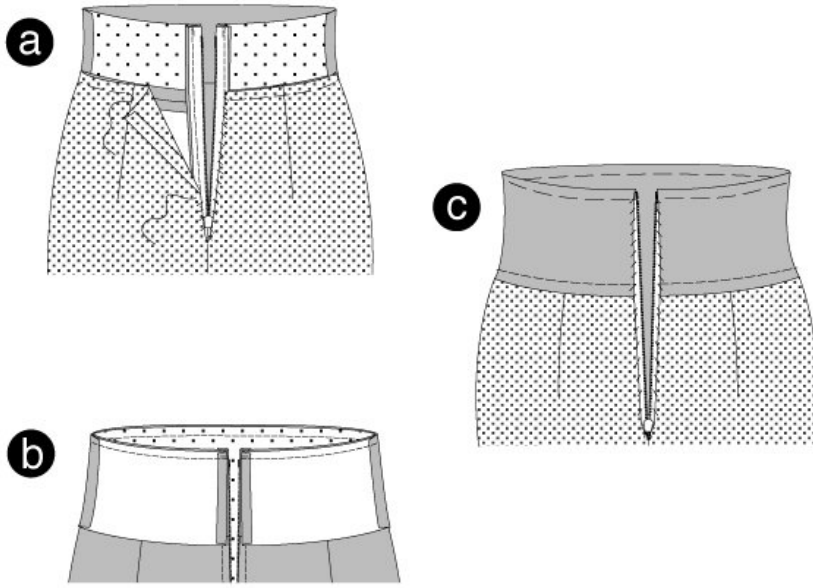


SUSPENDERS

8 Position suspender pieces together, right sides facing. Pin the long edges and end edges of the suspenders together. Stitch. Trim allowances and cut the corners at a slant. Turn suspenders inside out. Pin edges, press and topstitch.

9 Between the cross lines, pin the ends of the front suspender part onto the front waistband.

Step 8 — LINING / WAISTBAND



LINING

Stitch the darts, center back seam and side seams of the lining skirt as done to the fabric skirt. Press the opening allowances to the inside.

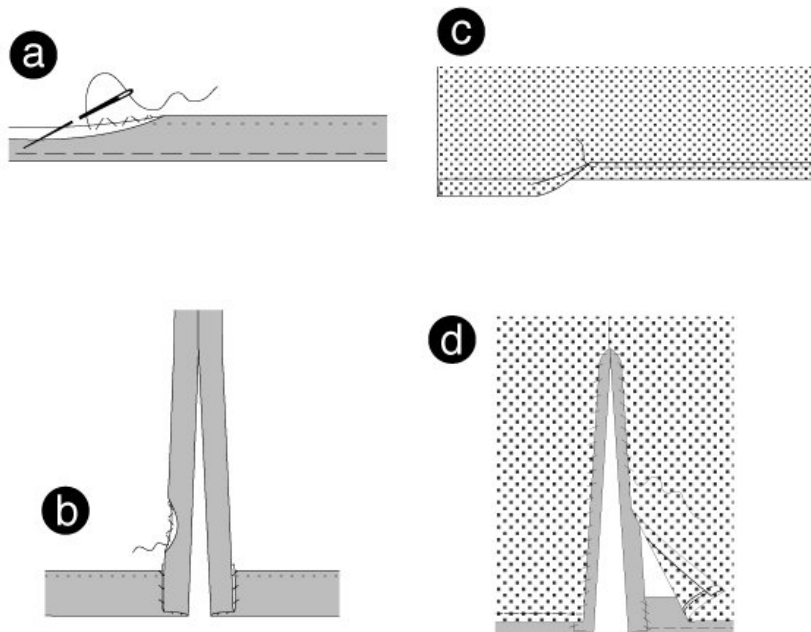
Position the lining on the skirt, wrong sides facing. Side seams meet. Position the top edges of skirt and lining together. Pin. Sew the opening edges by hand on the zipper strips. (a)

DOUBLE WAISTBAND

Position the non-interfaced waistband on the interfaced, already stitched waistband part, right sides facing. Pin. Side seams meet. Fold the allowance of the back waistband edges inside. Position the top edges together and pin. Stitch. Trim allowances. (b)

Turn the waistband inside, pin and press. Neaten the waistband edge. Fold it over the seam line and pin. Stitch along the seam line on the right side of the waistband, thereby slightly stretching the waistband and enclosing its inner part. ©

Step 9 — HEMLINE / LINING HEMLINE / SUSPENDERS



HEMLINE

Open slit allowances.

Neaten hemline. Fold and press. Sew the hemline by hand. (a) Turn the allowances and stitch onto the hemline (b).

LINING HEMLINE

Open allowances

Turn the hemline and press. Fold and pin. Topstitch hemline narrowly. © Turn allowances inside and press. Stitch slit edges on the slit allowances (d).

SUSPENDERS

Try the skirt on. Between the cross lines, pin the ends of the suspender under the back waistband. Check the length of the suspenders and sew by hand.

Disregard further steps

BurdaStyle

Jenny Variation C: Skirt with Suspenders