

4/2010 Drop-sleeve Dress

By: burda style magazine

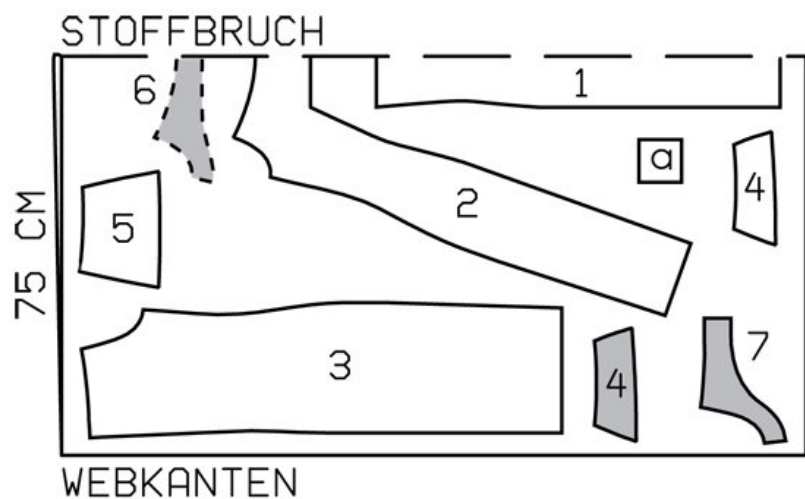
<http://www.burdastyle.com/projects/42010-drop-sleeve-dress>

Drop-sleeve dress burda style magazine patterns FAQ

Materials

Cotton satin with crosswise stretch

Step 1 — Preparation



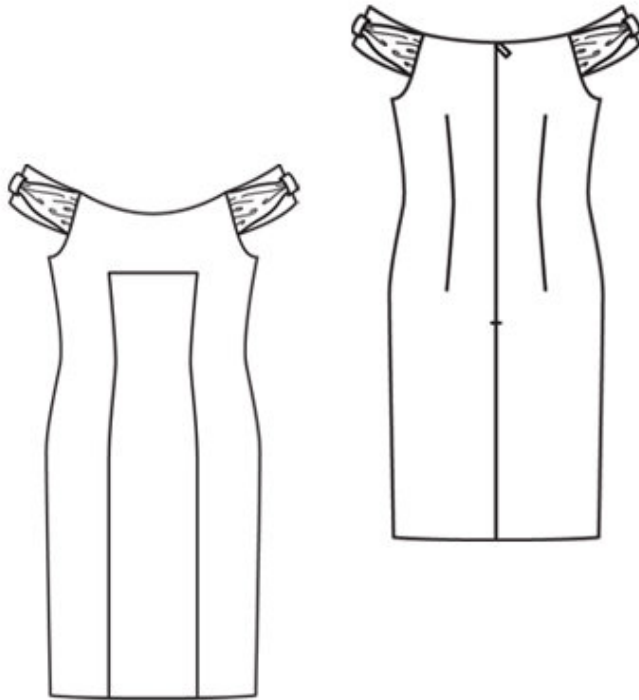
127 36-44

Trace the pattern pieces from the pattern sheet. Lengthen piece 1 as indicated

Seam and hem allowances:

Seams and edges 1.5 cm (5/8 in), hem 4 cm (15/8 ins).

Step 2 — Cutting Out



1centre front, on a fold 1x

2front, on a fold 1x

3back 2x

4strap 4x

5draping piece 2x

6front facing, on a fold 1x

7back facing 2x

a) 2 loops, 8 cm (3 1/4 ins) long, 8 cm (3 1/4 ins) wide, finished width 4 cm (1 5/8 ins).

Interfacing: See pattern layout. Also iron small pieces of interfacing to wrong side of front, at corners of -seams.

Step 3 — Vertical and horizontal seams

Stitch long edges and horizontal edge of centre front right sides together with front, clipping seam allowance of front into corners. Press seam allowances of vertical seams open. Press allowances of horizontal seam up.

Step 4 — Darts and zipper

Stitch darts in back pieces. Press darts toward centre back. Sew invisible zip to back opening edges. Stitch centre back seam from lower edge to zip. Stitch side seams.

Step 5 — Strap pieces, draping pieces

Lay each interfaced strap piece on strap piece with no interfacing, right sides together. Stitch lengthwise edges together. Turn straps right side out. Press allowances on upper and lower edges of draping pieces to wrong side. Gather draping pieces along the middle, 5 mm (3/16 in) to each side of marked line, to a length of 4 cm (15/8 ins). Gather side edges to match ends of each corresponding strap piece. Fold loop pieces lengthwise, right side facing in. Stitch along lengthwise edges. Turn right side out. Lay loops around gathered middle of draping pieces, Sew ends of loops together in back. Lay draping pieces on straps, with wrong side facing right side (note seam numbers 3 and 4), and baste to ends. Baste straps to armhole edges of front, above marking (seam number 3).

Step 6 — Stitch side seams of facing, opening edges of dress

Stitch side seams of facing. Pin facing right sides together with armholes and upper edges of dress. Turn facing at zip opening back, about 5 mm (3/16 in) before edge, and pin to upper edge. Lay allowances at opening edges of dress outward and pin to upper edge, over facing. Stitch along upper edges of dress and edges of armholes, leaving seam at back armholes open between top corner and marking and catching straps at front edges of armholes. Trim seam allowances. Lay facing and allowances at opening edges to inside and press edges. Slip back ends of straps into openings in seam and pin in place. Try on dress to check fit of straps. Then open facing out again to stitch remainder of seam, thereby catching back ends of straps. Lay facing to inside again and sew to zip tapes and to seams.

BurdaStyle

4/2010 Drop-sleeve Dress