

Jonny

By: burdastyle

<http://www.burdastyle.com/projects/jonny>



Jonny is a great Cocktail/Dinner Dress if made in Chiffons or Satins. Leaving out the lining of the sleeves gives the Dress more of an Evening look. If you are in desperate need of some new office clothes, try a wool or corduroy. Another variation would be to make it sleeveless. Wear a fun long sleeve underneath in a different color!

Step 1

burda Download-Pattern Dress 7979 – Instructions



average

fitted

Sizes	US	45 ins / 114 cm										55 ins / 140 cm									
		6	8	10	12	14	16	18	6	8	10	12	14	16	18						
	Eur.	32	34	36	38	40	42	44	32	34	36	38	40	42	44						
	yds	2 1/4	2 1/4	2 1/4	2 1/4	2 1/4	3	3 1/4	2 1/4	2 1/4	2 1/4	2 1/4	2 1/4	2 1/4	2 1/4						
	m	2.40	2.4	2.40	2.45	2.50	2.70	2.75	2.10	2.10	2.10	2.10	2.10	2.10	2.10						
Contrasting fabric	yds	1/4	1/4	1/4	1/4	1/4	1/4	1/4	1/4	1/4	1/4	1/4	1/4	1/4	1/4						
	m	0.45	0.45	0.45	0.45	0.45	0.45	0.45	0.45	0.45	0.45	0.45	0.45	0.45	0.45						
Lining	yds	1 1/2	1 1/2	1 1/2	1 1/2	1 1/2	1 1/2	1 1/2	1 1/2	1 1/2	1 1/2	1 1/2	1 1/2	1 1/2	1 1/2						
	m	1.20	1.20	1.20	1.20	1.20	1.20	1.20	1.20	1.20	1.20	1.20	1.20	1.20	1.20						

→ with nap

Interfacing
24" x 18"
(60 cm x 45 cm)

Velvet,
baby corduroy,
lightweight
flannel

9 x

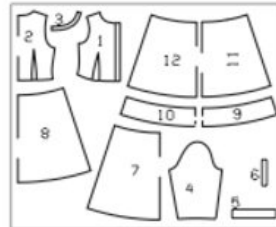
14" (35 cm)

24 1/2"
(63 cm)

74 - 83 1/2"
(188 cm -
212 cm)

- right side
- wrong side
- interfacing
- lining
- batting

Pattern pieces:



Pattern Pieces

- 1 Bodice Front 2x
- 2 Bodice Back 1x
- 3 Neck Band 2x
- 4 Sleeves 2x
- 5 Sleeve Flounce 2x
- 6 Facing for Slit 2x
- 7 Skirt Front 1x
- 8 Skirt Back 1x
- 9 Front Hem Band 1x
- 10 Back Hem Band 1x
- 11 Skirt Front/ Lining 1x
- 12 Skirt Back/ Lining 1x

Step 2



The patterns can be printed out at the copy shop. If you decide to print them at home, follow the instructions: Paper cut for ANSI A (German DIN A4) prints: The patterns are printed out on 28 sheets with a thin frame. Wait until all sheets are printed out. Arrange the sheets so that they fit together (see additional page with the overview of the prints). Fold the single sheets on the upper and right edge along the thin frame lines. Begin with the left lower sheet and then tape the frame lines together precisely.

Step 3



ADJUST PATTERN SIZES

Select your size according to the Burda-dimension table: dresses, blouses, jackets and coats according to the bust size, trousers and skirts according to the hip width. Change the pattern to fit your measurements if they deviate from the Burda-size chart. Cut out the pattern according to your size. Refer to our "Adjust patterns for mixed sizes" technique

LENGTHENING OR SHORTENING THE PATTERN PIECES

Our pattern is calculated for a height of 5â€ 6â€ (168 cm). If you are taller or shorter, you can adjust the pattern pieces along the lines marked “lengthen or shorten here”. This way the proper fit is maintained. Always adjust all pattern pieces along the same line to the same degree.

How to lengthen and shorten pattern pieces:

Cut the pattern pieces along the marked lines

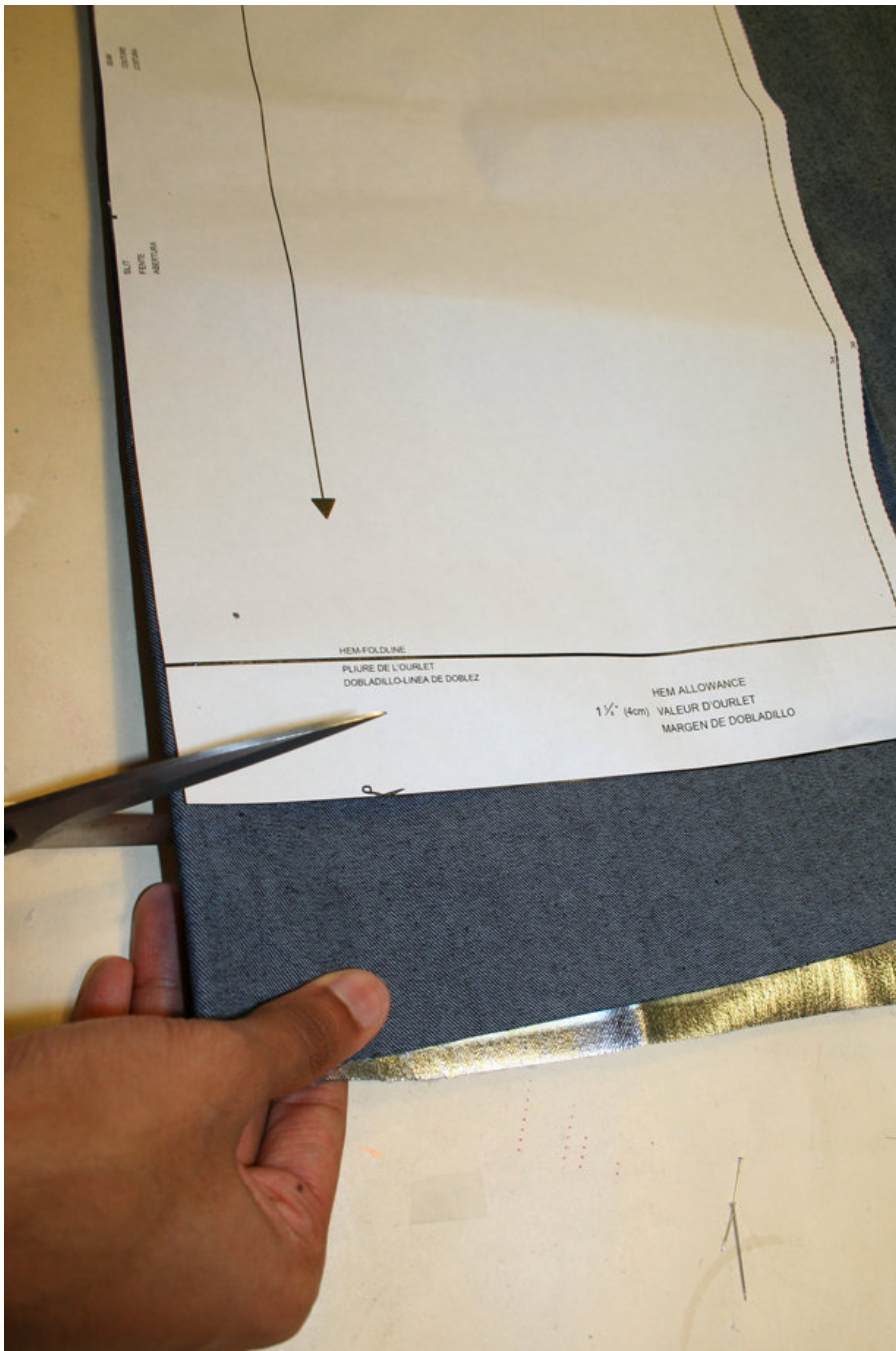
To lengthen, slide the two halves of the pattern piece as far apart as necessary.

To shorten, overlap the two halves of the pattern piece as far as necessary. Blend the side edges.

Sizes 34 to 44:

In piece 1 the buttonholes are marked for a size 32. For the other sizes, mark the top buttonhole at the same distance from the neckline as in a size 32. The lowest buttonhole is the same for all sizes. Mark the remaining four buttonholes, evenly spaced, between the upper and lower buttonhole.

Step 4



CUTTING OUT

FOLD () means: Cut on the fold, the fold being the center of the pattern piece, but never a cut edge or seam. The piece should be cut double, with the fold line forming the center line. Pattern pieces that are outlined with a broken line in the cutting diagrams are to be placed face down on the fabric. The cutting diagrams on the pattern sheet show how the pattern pieces should be placed on the fabric.

The cutting diagrams show the placement of the pattern on the fabric.

For a single layer of fabric, the pattern pieces are pinned to the right side. For double layers of fabric, the right sides are facing and the pattern pieces are pinned to the wrong side. The pattern pieces that are shown extending over the fold of the fabric in the cutting diagram should be cut last from a single layer of fabric.

Velvet, corduroy: Before you pin the pattern pieces to the fabric, you must determine the DIRECTION OF THE NAP. Velvet and corduroy should be cut against the nap. In other words, lay the pattern pieces on the fabric so that the fibers are smoothed down when you run your hand from the lower to upper edges of the pattern piece.

CONTRASTING FABRIC:

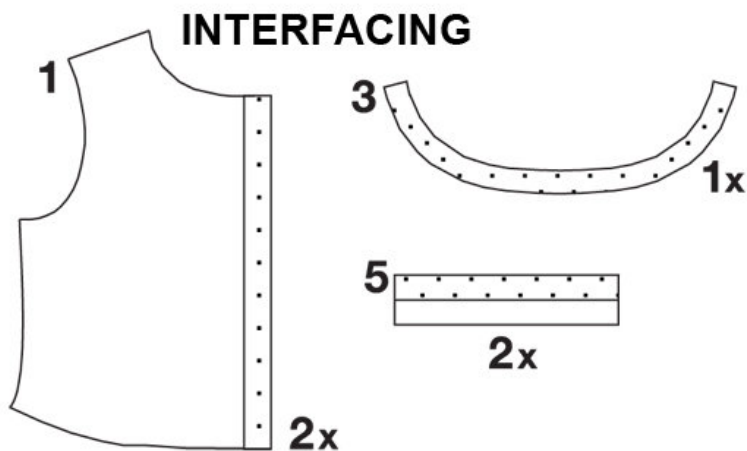
Cut pieces 8 and 9 from contrasting fabric, as shown in the cutting layout.

If fabric is not folded, pin the pattern pieces on the right side.

If fabric is folded, the right side is facing inside. Pin pattern pieces onto the wrong side.

Cut the pieces that are placed over the selvage in the copy paper last, with the fabric not folded.

Step 5



SEAM AND HEMLINE ALLOWANCES are included on an average:

1 5/8" - 8" (4 cm) for hem, 5/8" (1.5 cm) for all edges and stitches. Using BURDA copying paper, transfer the lines and signs of the pattern onto the wrong side of the fabric. Instructions can be found in the packaging.

Sewing

While sewing, the right sides of the fabric are facing.

Transfer all lines of the pattern onto the right side of the fabric using basting stitches.

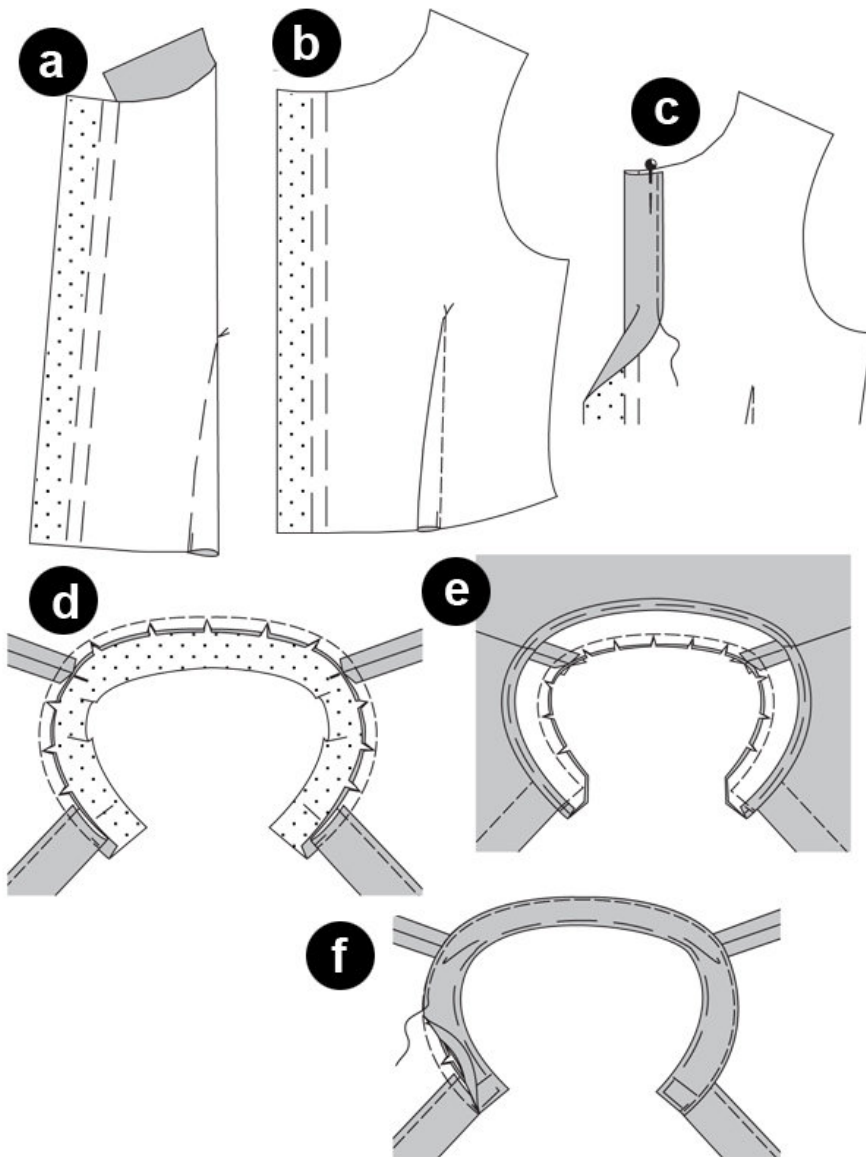
INTERFACING

Cut interfacing according to the drawing and iron onto the wrong side of the fabric.

LINING

Cut lining as in pieces 11 and 12.

Step 6



Dress

Baste waist darts on bodice fronts and back. Stitch each dart from edge toward point. (a) Press darts towards center front or center back (b)

Front Edges

Finish edges of front self-facings. Turn self-facings to inside along marked FOLD LINES, baste and edge stitch in place. © Stitch shoulder seams, matching seam numbers (1). Finish edges of seam allowances and press seams open.

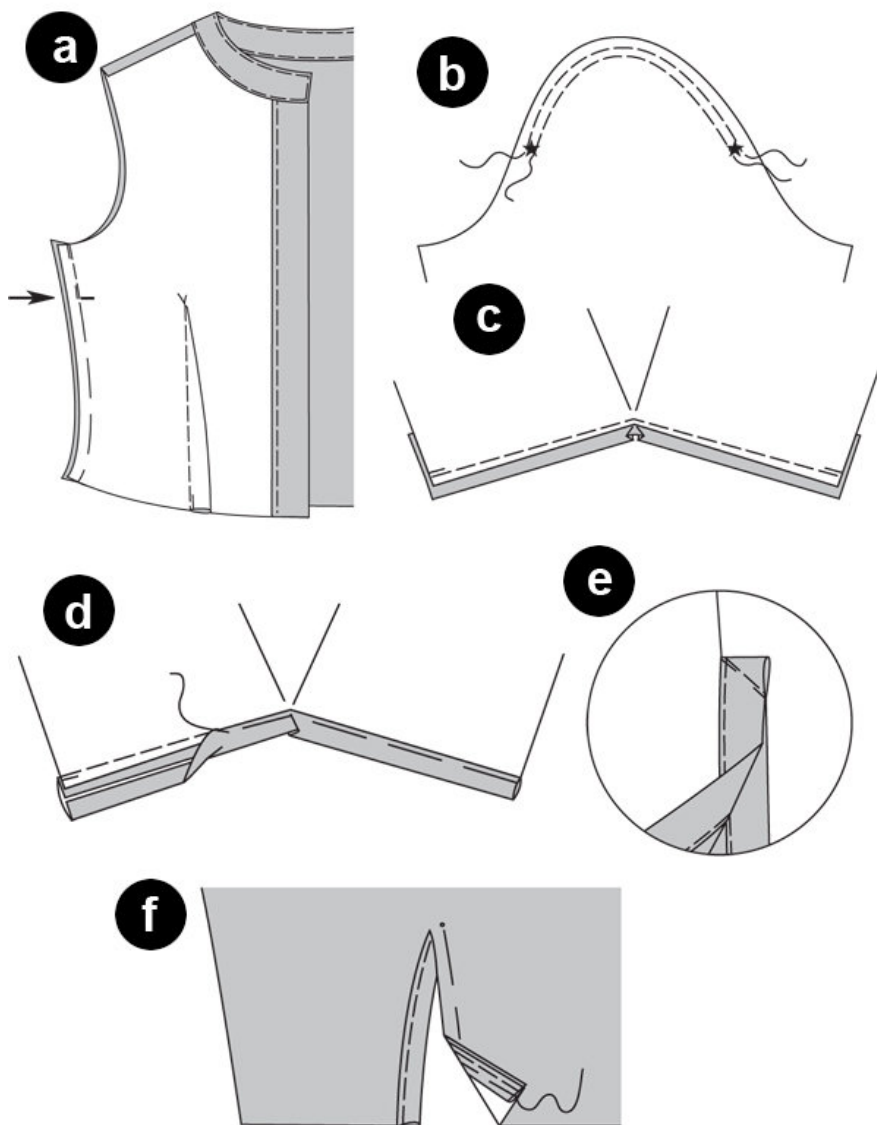
Neck Band

Baste interfaced neckband piece to neck edge, right sides facing, matching centers. Seam numbers (2) must match and horizontal marks must meet shoulder seams. Stitch. Trim seam allowances and clip curves. Press allowances toward neckband. (d)

On the neckband piece with no interfacing, trim allowance on lower edge. Turn this allowance to wrong side, baste, and press. Lay neckband pieces together, right sides facing. Baste edges together as illustrated, and stitch. Trim seam allowances, trimming diagonally across corners. Clip curves. (e)

Turn neckband right side out. Baste seamed edges and press. Baste inner edge to attachment seam. Topstitch close to all edges of neckband, thereby catching the inner edge. (f)

Step 7



Side Seams/ Left Slit

Lay bodice front on bodice back, right sides facing. Baste side seams, matching seam numbers (3). Stitch, stitching, left side seam from armhole edge to slit mark (arrow). Tie- off ends of seams. Leave slit basted. Finish edges of seam allowances and press seams open. Remove basting at slit. (a)

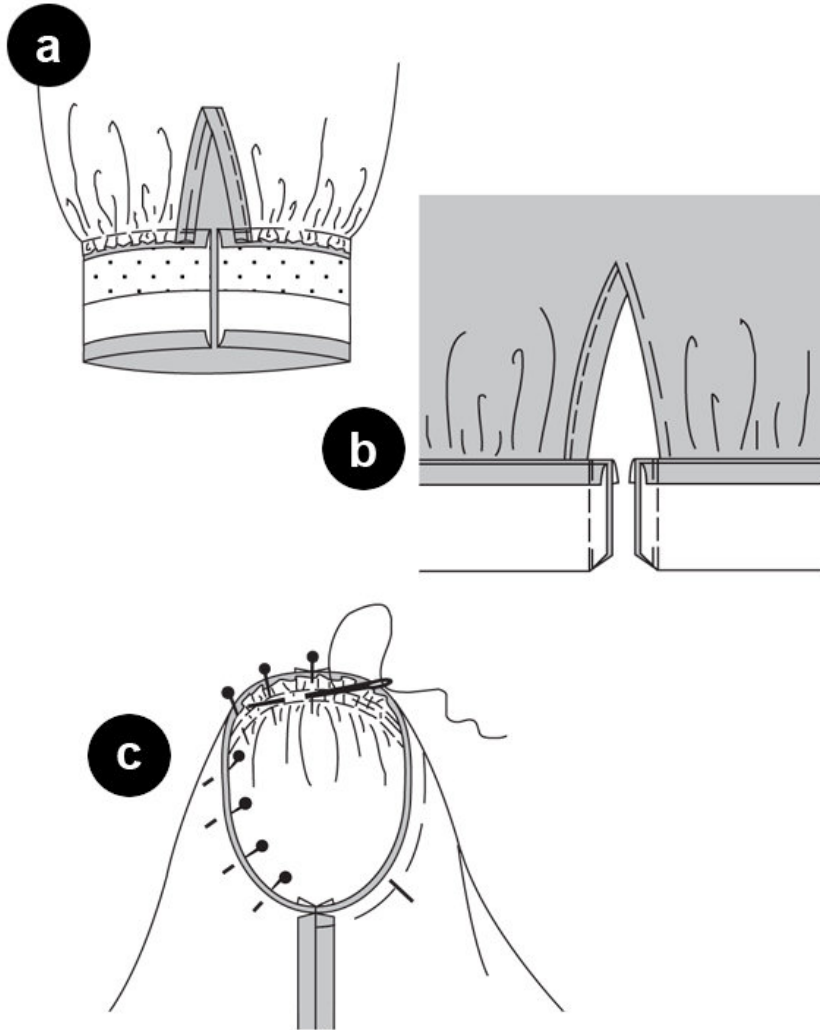
Sleeves with ruffles

To gather each sleeve cap, first stitch two closely spaced lines of machine basting from star symbol to star symbol. Fold each sleeve lengthwise, right side facing in. Stitch sleeve seams, matching seam numbers (4). Finish edges of seam allowances and press seams open. (b)

Cut into the edge of the lower sleeve, pull apart cut edges and place onto the slit facing as shown in the drawing. Baste. Iron facing over the base seam. ©

Turn facing inside halfway, fold and pin onto the base seam and baste. (d) Fold slit right sides facing, stitch facing diagonally at the end of the slit as shown in drawing (e)

Step 8



Fold over the facing at the front slit edge and pin to the inside. Iron. Fold sleeves lengthwise, right side inside. Baste sleeve seams (seam number 4). Trim seam allowances folded together and iron on one side. Pull in lower sleeve edge.

Pin sleeve flounces onto the lower sleeve edge (seam number 6) and stitch. Iron seam allowances into the flounce. Fold over and iron the seam allowance of the other long edges. (a)

Pin sleeve flounces onto the lower sleeve edge (seam number 6) and stitch. Iron seam allowances into the flounce. Fold over and iron the seam allowance of the other long edges. Add in buttonholes. Sew buttons. (b)

Setting in Sleeves

To gather each sleeve cap, bull bobbin threads of machine basting.

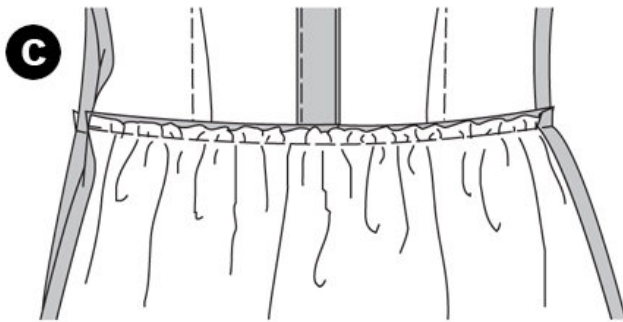
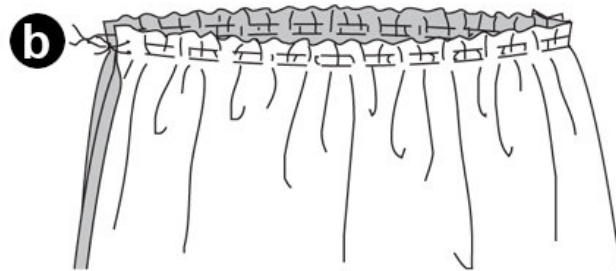
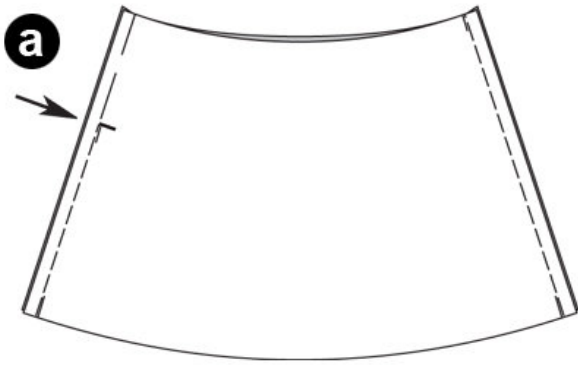
Pin each sleeve to armhole edge, right sides facing. ©

When setting in sleeves, 4 points are important for proper fit: The horizontal marks (7) on sleeve and bodice front must match. Sleeve seam and side seam must match. The horizontal mark on sleeve cap must match shoulder seam. The gathering must be distributed evenly. Working from the sleeve side, baste sleeve to armhole edge and stitch. Trim seam allowances. Finish seam allowances and press toward sleeve.

Work **BUTTONHOLES** in right front edge of bodice and neck band.

Sew **BUTTONS** to left front edge of bodice and neckband, at marked center front, to match buttonholes. Button bodice closed.

Step 9

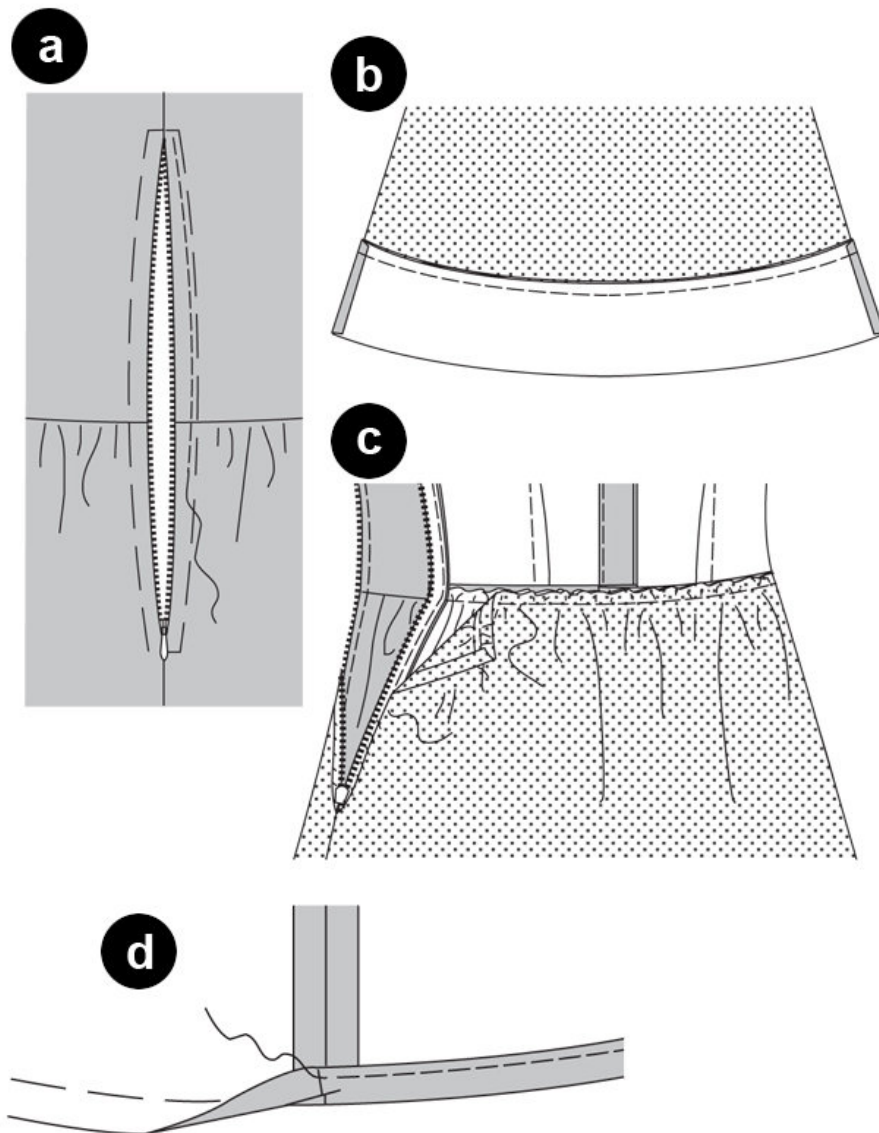


Lay skirt front on skirt back, right sides facing. Baste side seams, matching Seam numbers (8) and stitch, stitching left side seam from slit mark to lower edge. Tie-off edge of seams. Leave slit basted. Finish sedges of seam allowances and press seams open. (a)

To gather upper edge of skirt, first stitch two closely spaced lines of machine basting close to upper edge. Pull bobbin threads to gather skirt to match the lower edge of bodice. Knot gathering threads. Distribute evenly. Open allowances on slit edges on slit edges of bodice and skirt. (b)

Pin upper edge of skirt to lower edge of bodice right sides facing, matching side seams. Baste skirt to bodice, matching seam numbers (12), and stitch. Trim seam allowances. Finish edges of allowances together and press up. ©

Step 10



Zip

Turn seam allowances on slit edges to inside again.

Baste zipper under slit edges so that zipper teeth are covered. Sew zipper in place by machine, using the zipper foot. (a).

Lining: Stitch side seams as described skirt, matching seam numbers (9) and leaving slit open as mirror image to skirt.

Hem Band

Stitch side seams on hem band, matching seam numbers (10). Finish edges of seam allowances and press seams open.

Stitch hem band to lower edge of lining, with right side of hem band facing wrong side of lining. Seam numbers (11) must match and side seams must match. Finish edges of seam allowances together and press towards lining. Finish upper edge of lining and gather. (b)

Pull lining into skirt, wrong sides facing. Pin upper edge of lining to skirt attachment seam, matching side seams. Stitch lining in place, as close to zipper as possible. Sew lining edges to zipper tapes by hand. ©

Seam

Trim seam allowances at the skirt and seam band to 0.7 cm, de-baste, fold over, iron and stitch. (d)

BurdaStyle

Jonny