

burda style magazine 03/2010 Short-sleeve Tuxedo Blouse

By: burda style magazine

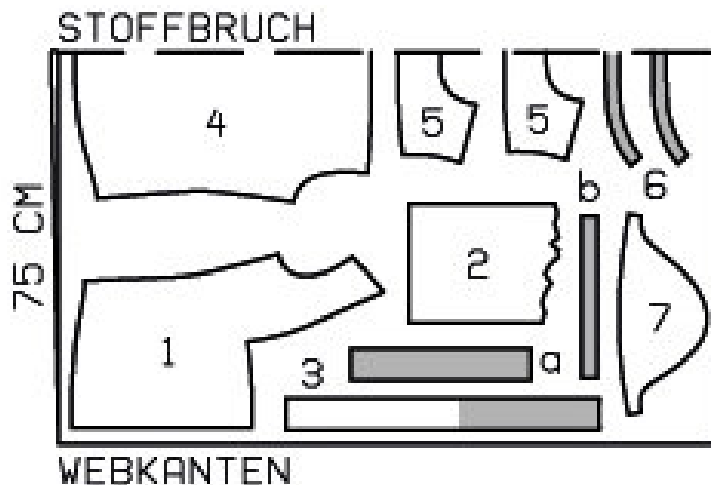
<http://www.burdastyle.com/projects/burda-style-magazine-032010-s>

Short-sleeve Tuxedo Blouse burda style magazine patterns FAQ

Materials

Cotton Chintz

Step 1 — Preparation



124 34-42

Trace the pattern pieces from the pattern sheet.

The buttonholes on piece 3 are marked for size 34. For sizes 36 — 42, mark the top buttonhole the same distance from upper edge as for size 34. The bottom buttonhole is in the -same place for all sizes. Mark the other buttonholes evenly in between. The asterisks on piece 7 (gathering) are for size 36. For the other sizes, mark the asterisks the same distance from sleeve seam line as for size 34.

Seam and hem allowances:

Seams and edges 1.5 cm (5/8 in), hem 2 cm (3/4 in).

Step 2 — Cutting Out



- 1 front 2x
- 2 front insert 2x
- 3 front band 2x
- 4 back, on a fold 1x
- 5 yoke, on a fold 2x
- 6 standing collar, on a fold 2x
- 7 sleeve 2x

- a) right buttonhole band, 35 cm (13³/₄ ins) long, 6 cm (2¹/₂ ins) wide, finished width 3 cm (1¹/₄ ins),
- b) 2 sleeve bands, 29 â— 30 â— 31 â— 32 â— 33 cm (11¹/₂ â— 12 â— 12¹/₄ â— 12³/₄ â— 13 ins) long, 3 cm (1¹/₄ ins) wide, finished width 1.5 cm (5/8 in).

Interfacing: See pattern layout.

Step 3 — Pressing Pleats

Fold front inserts and back piece on marked pleat fold lines, wrong side facing in, and topstitch as marked. Press pleats to one side.

Step 4 — Stitching Front Inserts

Gather fronts between asterisks. Stitch front inserts to fronts, from each seam number 1 to corner, not catching side pleat folds. Clip seam allowance of fronts into corners, close to end of seam. Stitch inserts to front, from corner to front edge. Press seam allowances onto inserts.

Step 5 — Yoke

Pin one yoke to outside of upper back edge and pin other yoke inside of this edge. Stitch yokes in place and press up. Stitch outer yokes to upper edge of fronts. Press seam allowances onto yoke. Turn in inside yokes and sew to joining seams. Baste edges of yoke to neck and armhole edges, without turning in.

Step 6 — Side Seams

Stitch side seams. Lay hem allowance to inside, turn in, and stitch 1 cm (3/8 in) from fold edge.

Step 7 — Bands

Stitch front bands to fronts. Press seam allowances onto bands. Fold buttonhole band lengthwise, right side facing in. Stitch across top end. Turn buttonhole band right side out and press. Baste buttonhole band on self-facing of right front band so that bottom end of buttonhole band lies on bottom end of band and fold edge meets facing fold line. Press allowance on inside edge of band to inside. Lay self-facings outward on fold line and stitch to lower edge, up to band joining seam. Turn bands right side out and baste inside edges in place. Topstitch bands close to joining seam.

Step 8 — Standing Collar

Lay collar pieces right sides together. Stitch together along front and upper edges, beginning and ending stitching in front, exactly at seam line of joining edge. Trim seam allowances. Turn collar right side out and press. Stitch outer collar piece to neck edge of blouse. Press seam allowances onto collar. Turn in inside collar piece and baste along joining seam. Topstitch collar close to joining seam.

Step 9 — Sleeves

Stitch sleeve seams. Gather lower edges of sleeves between asterisks. Stitch narrow edge of sleeve bands together. Stitch sleeve bands to lower edges of sleeves. Press seam allowances onto sleeve bands. Press allowances on opposite edges of sleeve bands to inside. Fold sleeve bands half to inside. Baste inside edges in place. Topstitch sleeve bands along joining seams.

Step 10 — Setting in sleeves

Set in sleeves, easing sleeve caps.

Step 11 — Buttonholes

Work buttonholes in right front band, then work 3 more buttonholes in the buttonhole band, spaced the same distance apart. Work one buttonhole in right end of collar. Stitch upper end of buttonhole band as marked.

