

# Megan

By: burdastyle

<http://www.burdastyle.com/projects/megan>

---



Not shorts, not skirt, this SKORT is perfect for all occasions, dressed down or up, on the beach or out at night. Show us your version!

# Materials

Stretch cotton, 3 x buttons, Zipper

## Step 1

**burda Download-Pattern  
Skort 6044 - Instructions**

●●□□ leicht normal weit

burda sizes		55 ins / 140 cm						
		34	36	38	40	42	44	46
Skort	yds	1 1/4	1 1/4	1 1/4	1 1/4	1 1/4	1 1/4	1 1/4
	m	0,95	0,95	1,10	1,10	1,20	1,20	1,20
→ with nap		→	→	→	→	→	→	→

Wollstoffe, Flanell

right side

wrong side

interfacing

lining

batting

**Patternpieces:**

### PATTERN

- 1 Front pant piece 2x
- 2 Back pant piece 2x
- 3 Front waistband 4x
- 4 Back waistband 4x
- 5 Pocket pouch 4x
- 6 Front skirt panel 1x

Fabrics: Wool fabric, flannel

## Step 2



The patterns can be printed out at the copy shop. If you decide to print them at home, follow the instructions: Paper cut for ANSI A (German DIN A4) prints:  
 The patterns are printed out on 18 sheets with a thin frame. Wait until all sheets are printed out. Arrange the sheets so that they fit together (see additional page with the overview of the prints). Fold the single sheets on the upper and right edge along the thin frame lines. Begin with the left lower sheet and then tape the frame lines together precisely.

### Step 3



#### ADJUST PATTERN SIZES

Select your size according to the Burda-dimension table: dresses, blouses, jackets and coats according to the bust size, trousers and skirts according to the hip width. Change the pattern to fit your measurements if they deviate from the Burda-size chart. Cut out the pattern pieces 1 to 6 for the skirt according to your size. Refer to our "Adjust patterns for mixed sizes" technique

## LENGTHENING OR SHORTENING THE PATTERN PIECES

Our pattern is calculated for a height of 5â€ 6â€ (168 cm). If you are taller or shorter, you can adjust the pattern pieces along the lines marked “lengthen or shorten here”. This way the proper fit is maintained. Always adjust all pattern pieces along the same line to the same degree.

How to lengthen and shorten pattern pieces:

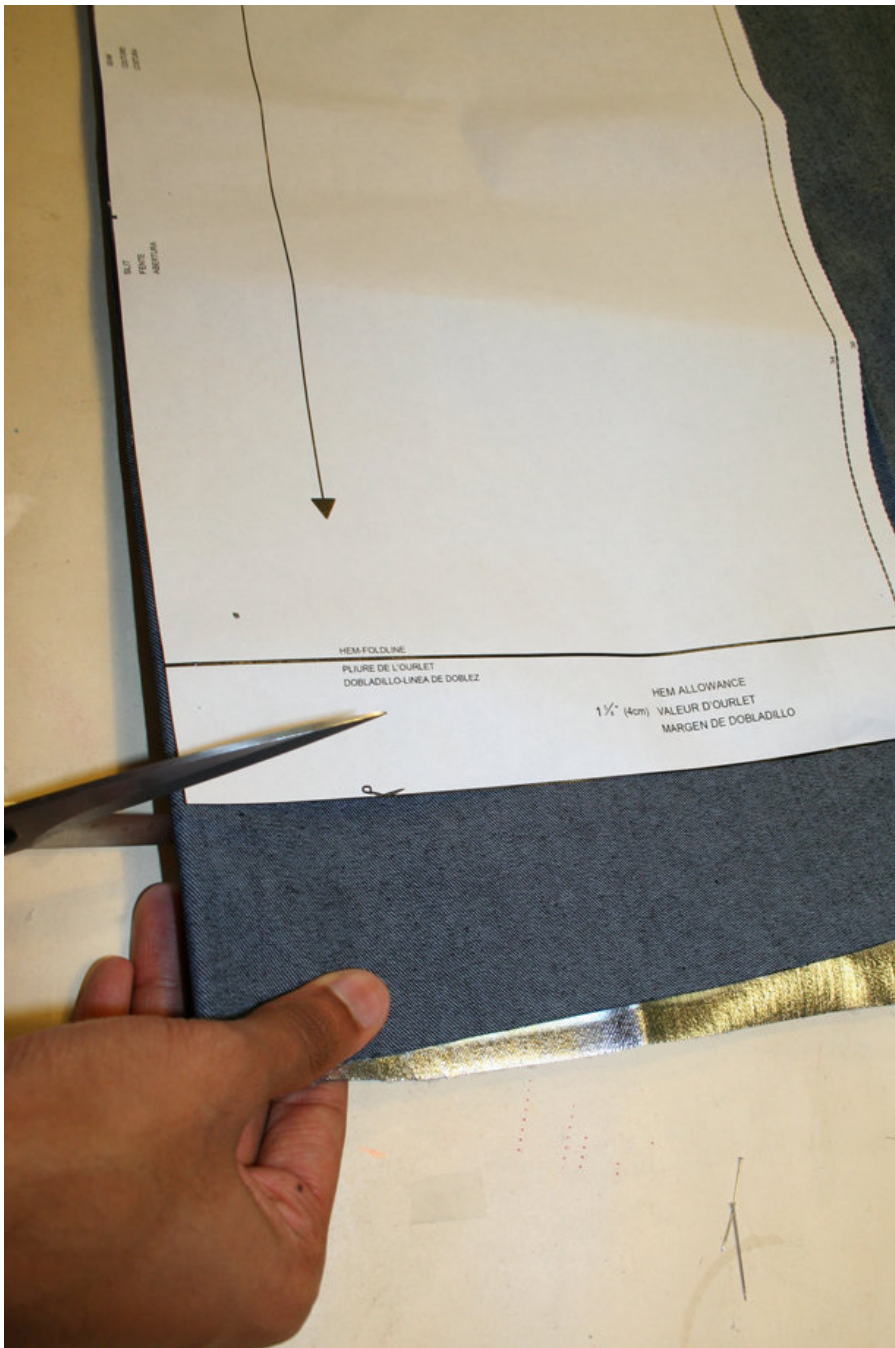
Cut the pattern pieces along the marked lines

To lengthen, slide the two halves of the pattern piece as far apart as necessary.

To shorten, overlap the two halves of the pattern piece as far as necessary. Blend the side edges.

---

## Step 4



## CUTTING OUT

FOLD ( ) means: Cut on the fold, the fold being the center of the pattern piece, but never a cut edge or seam. The piece should be cut double, with the fold line forming the center line. Pattern pieces that are outlined with a broken line in the cutting diagrams are to be placed face down on the fabric. The cutting diagrams on the pattern sheet show how the pattern pieces should be placed on the fabric.

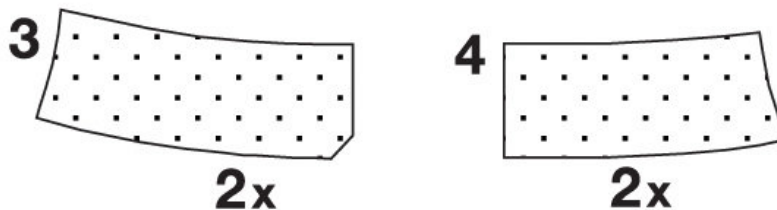
The cutting diagrams show the placement of the pattern on the fabric.

For a single layer of fabric, the pattern pieces are pinned to the right side. For double layers of fabric, the right sides are facing and the pattern pieces are pinned to the wrong side. The pattern pieces that are shown extending over the fold of the fabric in the cutting diagram should be cut last from a single layer of fabric .

---

## Step 5

### INTERFACING



SEAM AND HEMLINE ALLOWANCES are included on an average:

1 5/8" 8" (4 cm) for hem, 5/8" (1.5 cm) for all edges and stitches. Using BURDA copying paper, transfer the lines and signs of the pattern onto the wrong side of the fabric. Instructions can be found in the packaging.

#### Sewing

While sewing, the right sides of the fabric are facing.

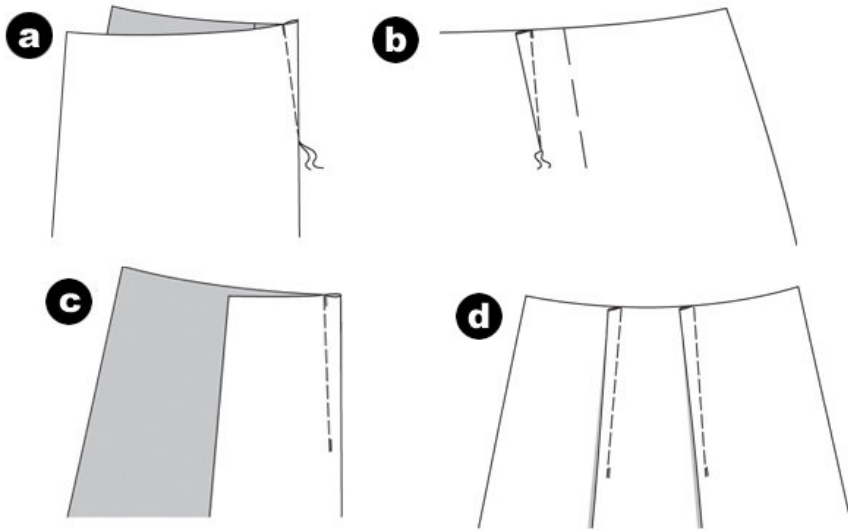
Transfer all lines of the pattern onto the right side of the fabric using basting stitches.

#### INTERFACING

Cut out the interfacing and press onto the wrong fabric side.

---

## Step 6



**SKORT**

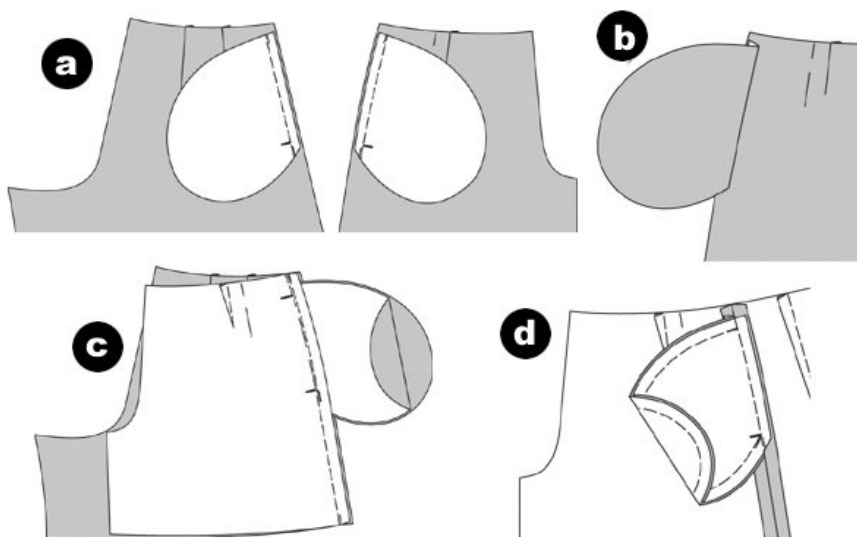
**Darts**

Stitch the darts on the front pant pieces to a point. Knot the thread ends (a). Press the darts towards the center front (b).

**PLEATS**

Fold the back pant pieces, right sides facing, so that the fold lines meet. Stitch the pleats from the top to the arrow. Secure seam ends ©. Press the inside of the pleats towards the side edges (d).

**Step 7**



**SIDE SEAMS / SEAM POCKETS**

Pin the pocket pouches on the front and back pant pieces, right sides facing and cross lines meeting. Stitch. Secure seam ends. (a)

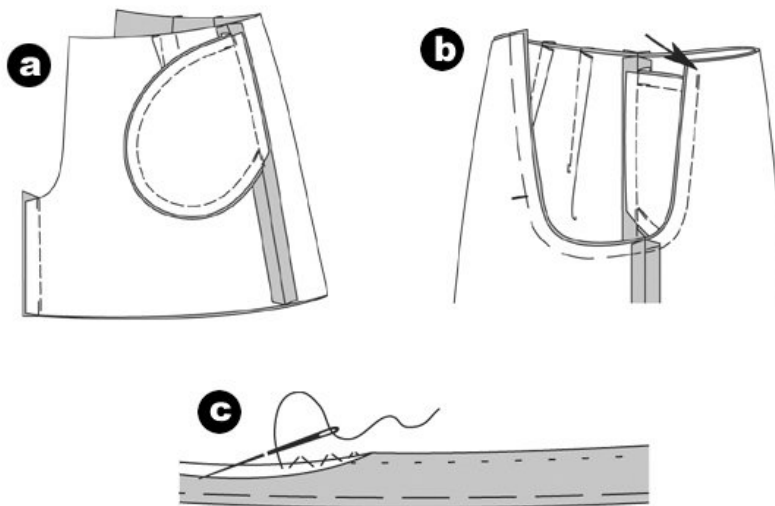
Turn the pocket pouches over the seam lines and press. (b)

Position the front and back pant pieces together. Pin the side seams (seam number 1). Stitch. Leave the pocket openings between the cross lines open, but pinned. Secure seam ends. Neaten allowances and press apart. (c)

Flip the pocket pouches inside the front pant pieces. Press. Then pin the edges and stitch. Neaten allowances. (d)

---

## Step 8



### INNER PANT LEGS

Fold the pant legs lengthwise, right sides facing. Pin inner pant leg edges (seam number 2) and stitch. Neaten allowances and press apart. (a)

### CENTER SEAM

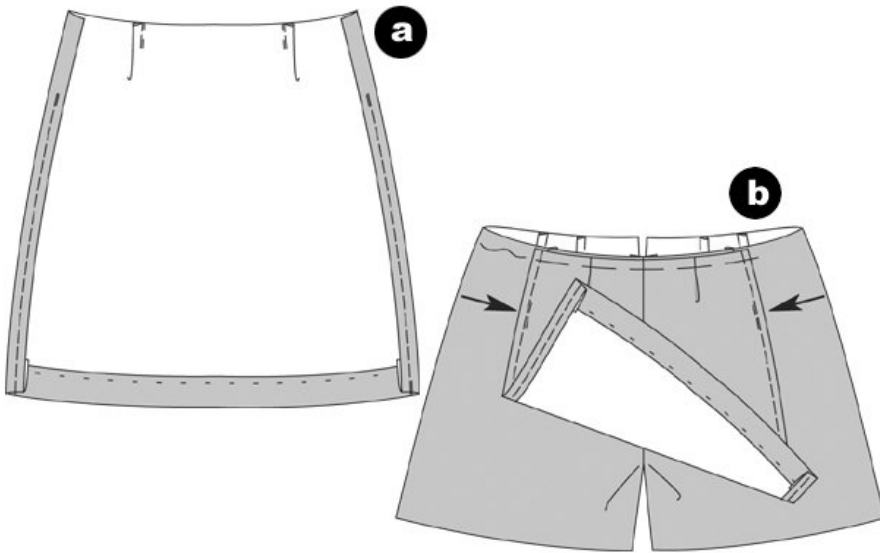
Turn one pant leg inside out. Then move one pant leg inside the other, right sides facing. Pin the center seam, the inner pant legs seams meet. Stitch the center front seam to the inner leg seams. Don't stitch over the allowance of the front top pant edge (arrow). Neaten all allowances and press apart from the top to the corner of the curve. (b)

### HEMLINE

Neaten hemline. Turn 1 1/2" (3cm) inside, pin and press. Sew hemline by hand. ©

---

## Step 9



### FRONT SKIRT PANEL

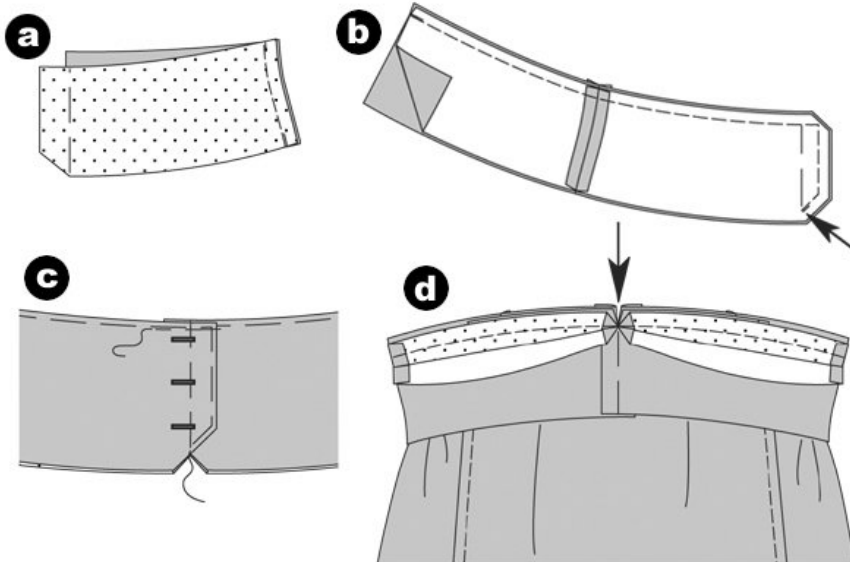
Stitch the pleats at the front skirt panel. Press the inside of the pleats towards the side edges. Stitch the hemline along the front skirt panel.

### SIDE EDGES

Neaten the allowances along the side edges, turn inside and pin. Then press. Topstitch the side edges  $\hat{\hat{}}$  (0.5 cm) wide from the bottom to  $3\hat{\hat{}}$  (7 cm) from the top edge. (a)

Position the front skirt panel, its edge meeting the seam line and the centers meeting, onto the front pant piece. Pin the top edge. Topstitch the side of the skirt panel  $\hat{\hat{}}$  (0.5 cm) wide onto the front pant piece; stitch to the end of the seam line ( $3\hat{\hat{}}$  / 7 cm). Secure seam ends (arrow). (b)

## Step 10



## WAISTBAND

Position the interfaced front and back waistband pieces together, right sides facing. Stitch side seams (seam number 3). Press allowances apart. Do the same with the non-interfaced waistband pieces. Neaten allowances of the bottom edge of the waistband. (a)

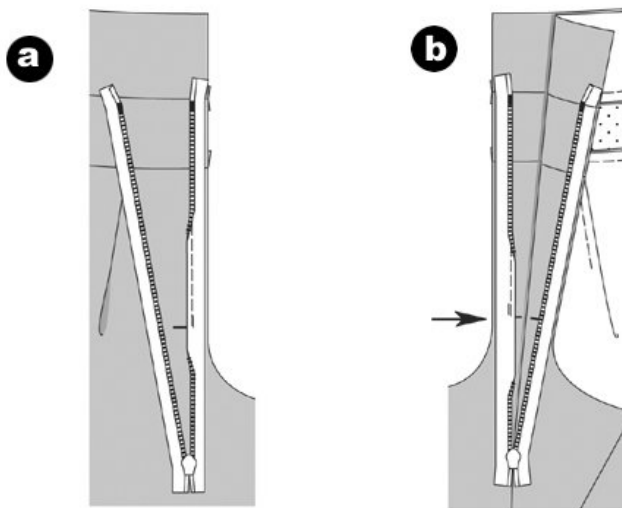
Position the waistband pieces with and without interfacing together, right sides facing. Stitch the front and top edges to the bottom waistband edge (arrow). Secure seam ends. Trim allowances and cut the corners at a slant. Turn waistband pieces inside out. Pin the edges and press. Work **BUTTON HOLES** into the right front waistband piece. (b)

Position the right and left waistband pieces together, the centers meet. Pin the pieces together. ©

Position the outer waistband piece on the top pant piece edge (seam number 4), right sides facing. The side seams meet. Stitch. Snip in the skirt allowances at the center front (arrow). Trim allowances and press inside the waistband. (d)

---

## Step 11



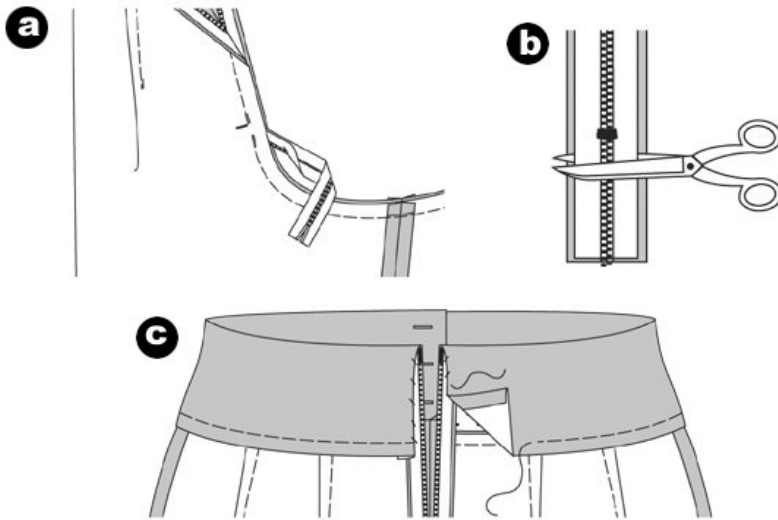
### ZIPPER (hidden)

The invisible zipper will be stitched from the right fabric side. The zipper should be slightly longer than the opening. It will be applied before the seam below the zipper will be stitched. You need a zipper foot for your sewing machine.

Open the zipper and position it with its right side facing the opening's seam allowance. Pin. The little teeth meet the marked opening edges. Topstitch the zipper narrowly along the teeth line, using the zipper foot (a). Stitch the other side of the zipper the same way (b). Stitch both sides from the top to the opening sign (arrow). Since the teeth tend to roll up, the zipper foot keeps them flat. Close zipper.

---

## Step 12



### CENTER BACK SEAM

Move one pant leg inside the other. Stitch the inner pant leg seam to the opening sign. Slightly pull the zipper. Secure seam ends. Tie up the zipper using sewing thread, so that the zipper is blocked and cannot be opened further. (a) Cut the zipper 1 cm below the tied up spot. (b)

Turn the back waistband inside. Fold the back edges and pin onto the zipper strips. Sew by hand. Pin the bottom waistband edge. Pin the bottom waistband edge. Stitch onto the right fabric side along the waistband seam line, enclosing the inner waistband. © Apply BUTTONS onto the center front of the left waistband piece.

---

**BurdaStyle**

Megan