

Judy

By: burdastyle

<http://www.burdastyle.com/projects/judy>

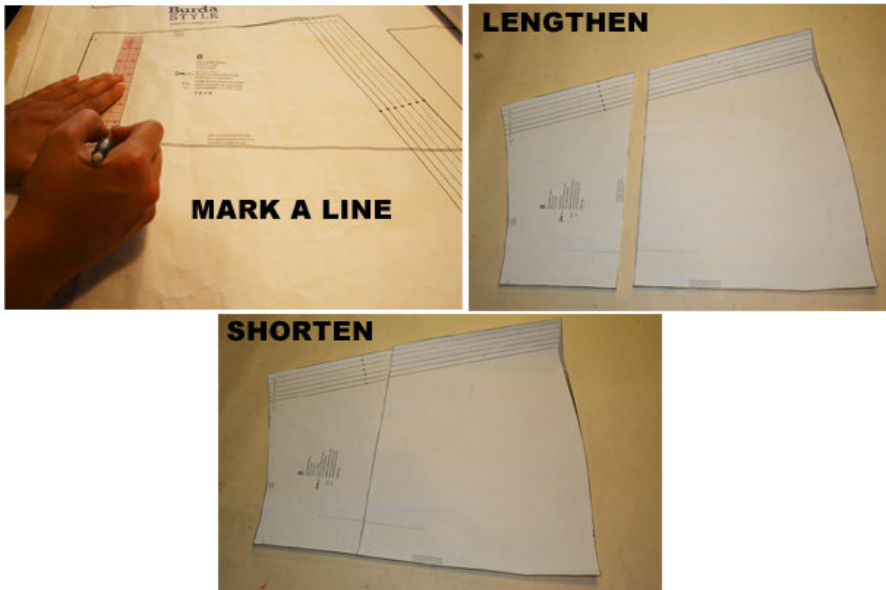


The Judy skirt is our take on a classic pleated skirt. While making the fabric choices for this skirt, we asked you, our dear BurdaStylers, for feedback, and we collectively decided to use the orange wool with purple accents. Originally, we thought to use a lovely tweed for edging the pleats, but we realized that would be too



The patterns can be printed out at the copy shop. If you decide to print them at home, follow the instructions: Paper cut for ANSI A (German DIN A4) prints: The patterns are printed out on 42 sheets with a thin frame. Wait until all sheets are printed out. Arrange the sheets so that they fit together (see additional page with the overview of the prints). Fold the single sheets on the upper and right edge along the thin frame lines. Begin with the left lower sheet and then tape the frame lines together precisely.

Step 3



ADJUST PATTERN SIZES

Select your size according to the Burda-dimension table: dresses, blouses, jackets and coats according to the bust size, trousers and skirts according to the hip width. Change the pattern to fit your measurements if they deviate from the Burda-size chart. Cut out the pattern according to your size.

Refer to our "Adjust patterns for mixed sizes" technique

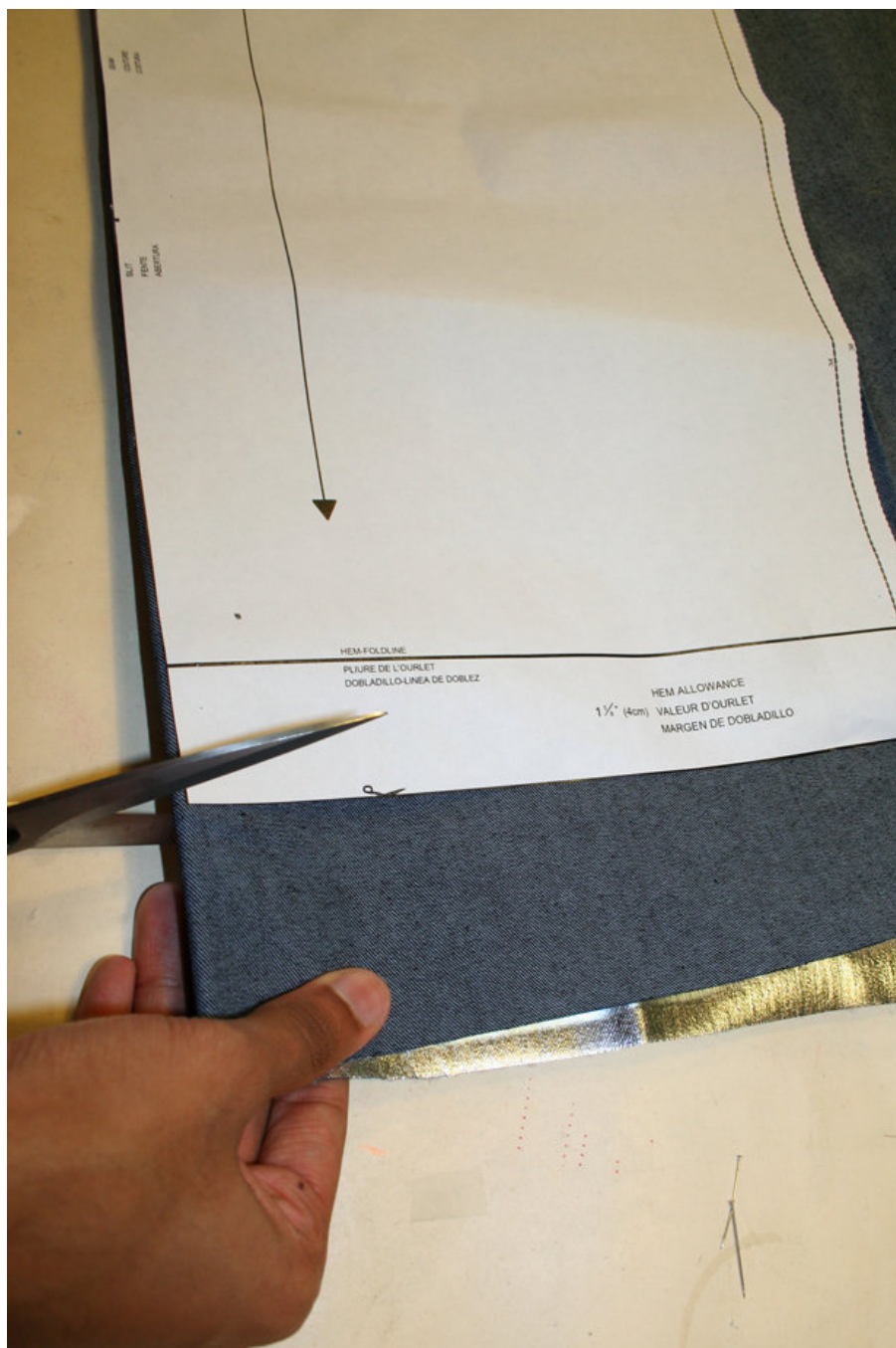
LENGTHENING OR SHORTENING THE PATTERN PIECES Our pattern is calculated for a height of 5â€ 6â€ (168 cm). If you are taller or shorter, you can adjust the pattern pieces along the lines marked “lengthen or shorten here”. This way the proper fit is maintained. Always adjust all pattern pieces along the same line to the same degree

How to lengthen and shorten pattern pieces: Cut the pattern pieces along the marked lines

To lengthen, slide the two halves of the pattern piece as far apart as necessary.

To shorten, overlap the two halves of the pattern piece as far as necessary. Blend the side edges.

Step 4



CUTTING OUT FOLD () means: Cut on the fold, the fold being the center of the pattern piece, but never a cut edge or seam. The piece should be cut double, with the fold line forming the center line. Pattern pieces that are outlined with a broken line in the cutting diagrams are to be placed face down on the fabric. The cutting diagrams on the pattern sheet show how the pattern pieces should be placed on the fabric.

The cutting diagrams show the placement of the pattern on the fabric. For a single layer of fabric, the pattern pieces are pinned to the right side. For double layers of fabric, the right sides are facing and the pattern pieces are pinned to the wrong side. The pattern pieces that are shown extending over the fold of the fabric in the cutting diagram should be cut last from a single layer of fabric.

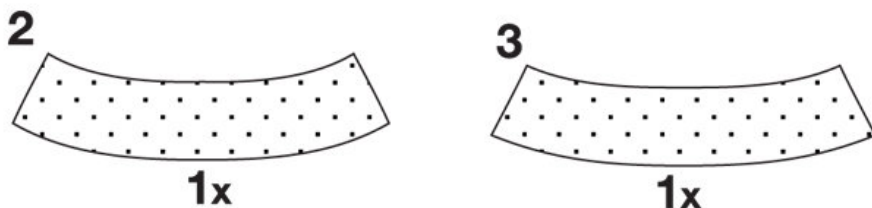
Application fabric: Cut pieces 18 to 21 from the application fabric according to the cutting diagram.

Fabric I and fabric II Cut pieces 1 to 4 from fabric I, pieces 5 and 6 from fabric II. See cutting diagrams.

Important: Pin pieces 5 and 6 onto the right side of a single layer of fabric with the labeled side of the pattern facing up.

Step 5

INTERFACING



SEAM AND HEMLINE ALLOWANCES are included on an average: 1 ¼" (3 cm) for the hemline, 5/8" (1.5 cm) for all edges and stitches. Using BURDA copying paper, transfer the lines and signs of the pattern onto the wrong fabric side. Instructions can be found in the packaging.

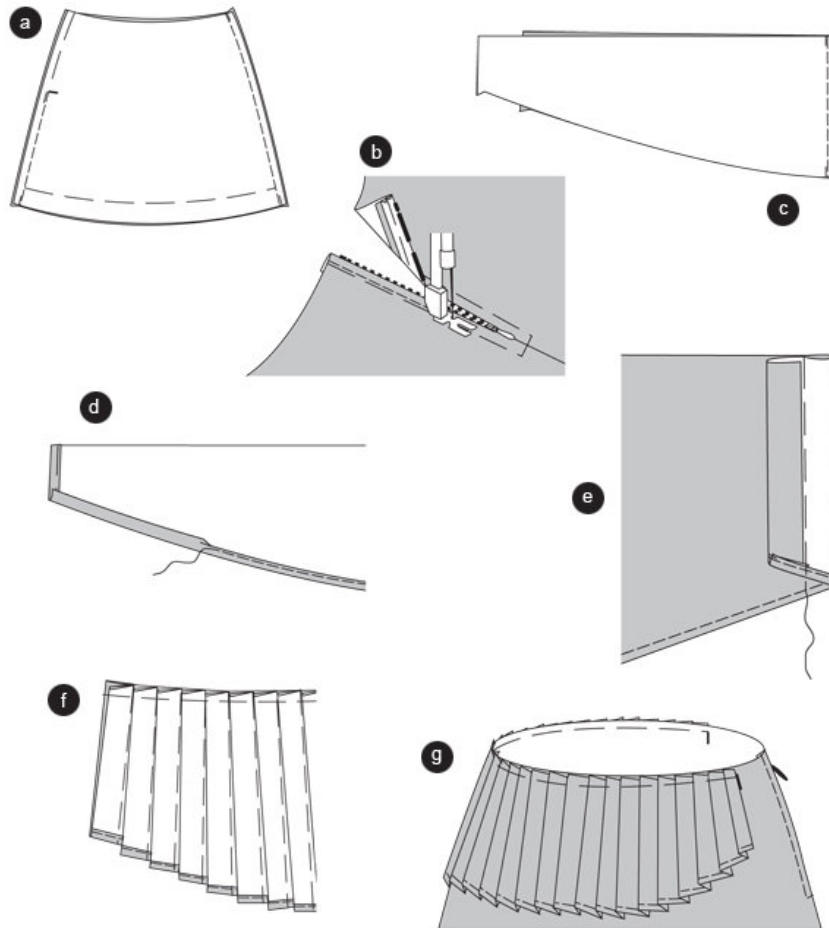
SEWING

While sewing, the right sides of the fabric are facing. Transfer all lines of the pattern, except the lines of the pleats (pieces 5 and 6) onto the right side of the fabric using basting stitches.

INTERFACING

Press the interfacing piece according to the cutting diagram onto the wrong side of the fabric.

Step 6



SIDE SEAMS / LEFT SLIT

Position the front skirt panel onto the back skirt panel; right sides facing. Pin the side seams. Stitch the right side seam. Stitch the LEFT side seam from the opening sign to the bottom. Secure seam ends. Leave the slit basted. Neaten allowances and press apart. Open the basting stitches along the opening (a).

ZIPPER

Position the zipper under the opening so that the little teeth are hidden. Stitch the zipper using a zipper foot (b).

PLEATED PIECE

Position the pieces to be pleated later, front and back, together, the right sides facing. Stitch the side seam (seam 1). Trim allowances and press inside the back piece ©.

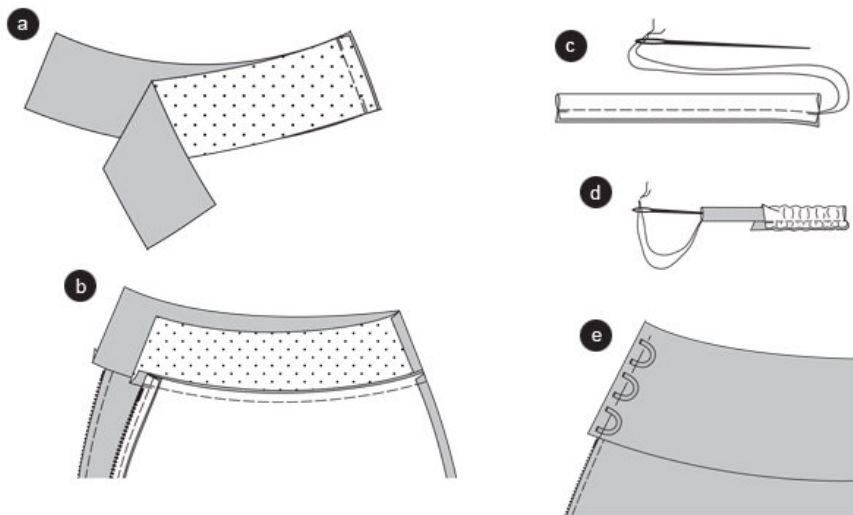
Neaten the short edges, along the FOLD LINE fold inside, pin and press. Fold and press the hemline; fold again and pin. Topstitch the hemline narrowly (d).

Fold the piece, so that 2 pleat lines (marked with an arrow) meet. Pin together from the top along the line to the bottom. Pin all pleats the same way (e).

Fold the pleats at the front piece towards the front edge; continuing on the back piece towards the side seam. Then pin the top edge. Press all pleats (f).

Pin the pleated piece on the upper skirt edge, right side seams meet. The ends meet the marked line; seam 2 at the front, seam 3 at the back (g).

Step 7



WAIST BAND / RIGHT SIDE SEAM

Position the interfaced front waist band on the back waist band, the right sides facing. Stitch the right side seam (seam 4). Stitch the side seam at the non-interfaced waist band. Press the allowances apart (a).

TOPSTITCH WAIST BAND

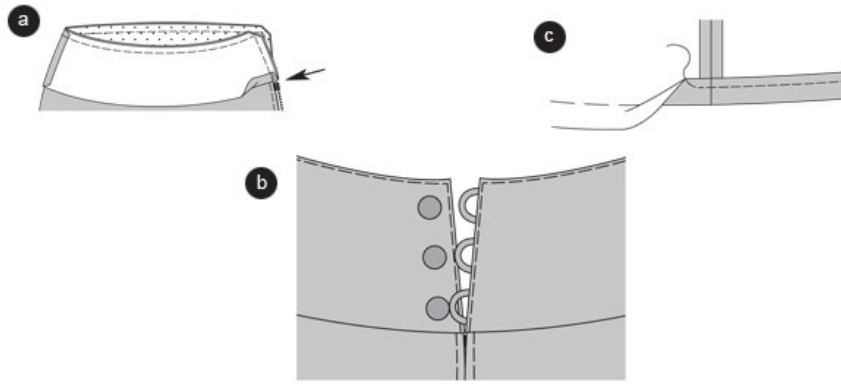
Pin the interfaced waist band on the top skirt edge, right sides facing. The side seams meet. The allowances of the side edges are overlapping the zipper. Stitch the waist band. Trim allowances and press inside the waistband (b).

LOOPS

Fold the strip for the loops lengthwise, right sides facing. Topstitch the edges $\hat{A}1/4\hat{A}$ (0.7 cm) wide. Trim allowances but leave the sewing threads long ©. Put the threads through a needle; then knot. Push the needle through the tube (d). Cut the strip into 3 equally long pieces.

Fold the loops and pin onto the cross lines on the back waist band. Make sure the size of the loops match the button size (e).

Step 8



DOUBLE WAIST BAND

Neaten the bottom edge of the non-interfaced waist band.

Position the waist band piece onto the already stitched down waist band piece. The side seams meet. Turn the bottom edge at the opening at an angle (arrow). Pin the top and side edges together and stitch, thereby sandwiching the loops. Turn the waistband. Pin the edges and press. Flip the inner side of the waistband over the seam line, pin. Stitch onto the right fabric side along the seam line, sandwiching the inner waist band. Topstitch the top and side edges narrowly (a).

Sew **BUTTONS** onto the front waistband. Make sure the size matches the loops (b).

HEMLINE

Neaten the hemline, fold inside and pin, press. Stitch the hemline 1 1/4" (2.5 cm) wide ©.

BurdaStyle

Judy