

# 11/2010 Trousers with front pleats

By: burda style magazine

<http://www.burdastyle.com/projects/112010-trousers-with-front-pleats>

---



Trousers with front darts burda style magazine patterns FAQ

## Materials

Crpe satin

---

## Step 1 — Preparation

Größen, Tailles, Sizes						2		3		4		
1	N		L		K		Oberweite Tour de poitrine Bust		Tailleweite Tour des taille Waist		Hüftweite Tour des hanches Hip	
	5'6" 168 cm		5'9" 176 cm		5'3" 160 cm		ins	cm	ins	cm	ins	cm
	US	Eur.	US	Eur.	US	Eur.						
	6	32	6	64	6	16	30	76	23	58	32 ½	82
	8	34	8	68	8	17	31 ½	80	24 ½	62	34	86
	10	36	10	72	10	18	33	84	26	66	35 ½	90
	12	38	12	76	12	19	34 ½	88	27 ½	70	37	94
	14	40	14	80	14	20	36 ½	92	29 ½	74	38 ½	98
	16	42	16	84	16	21	37 ½	96	30 ½	78	40 ½	102
	18	44	18	88	18	22	39 ½	100	32 ½	82	41 ½	106
	20	46	20	92	20	23	41	104	34	86	43 ½	110
	22	48	22	96	22	24	43 ½	110	36 ½	92	45 ½	116
	24	50	24	100	24	25	45 ½	116	38 ½	98	48	122
	26	52	26	104	26	26	48	122	41	104	50 ½	128
	28	54	28	108	28	27	50 ½	128	43 ½	110	52 ½	134
	30	56	30	112	30	28	52 ½	134	45 ½	116	55 ½	140
	32	58	32	116	32	29	55 ½	140	48	122	57 ½	146
	34	60	34	120	34	30	57 ½	146	50 ½	128	60	152

View A

Crpe satin,

View B

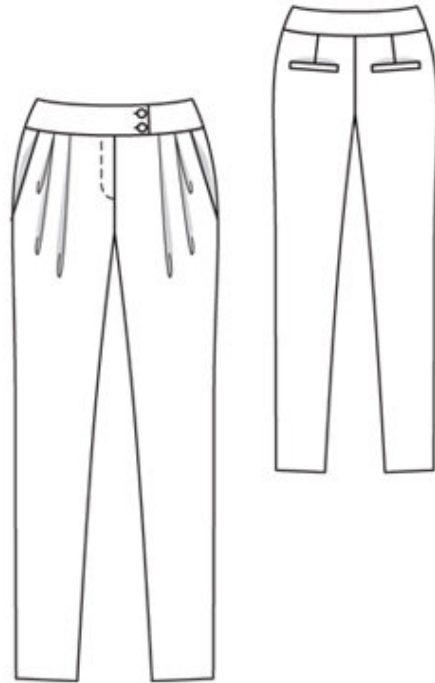
Fine corduroy

Trace the pattern pieces from the pattern sheet. Lengthen piece 23 as indicated. Trace the marked pocket piece from piece 22 to abutting line. Note different lines for right and left front edges of waistband. The pocket lines on piece 23 are marked in full on the pattern for size 72 only. For sizes 76 — 88, complete these lines accordingly.

Seam and hem allowances:

Seams and edges 1.5 cm (5/8 in), hem 4 cm (15/8 ins).

## Step 2 — Cutting out



#### View A

Crpe satin:

21 front trouser piece 2x

22 side hip yoke with

— integrated pocket piece 2x

— — pocket piece 2x

23 back trouser piece 2x

24 front waistband 4x

25 back waistband, on a fold 2x

a) 2 welt strips (back pockets), 15 cm (6 ins) long, 5 cm (2 ins) wide (incl. allowances),

b) 4 pocket pieces (back pockets), 15 cm (6 ins) wide, 15 cm (6 ins) long (incl. allowances),

c) left underlap piece, 13 cm (5 1/4 ins) long, 5 cm (2 ins) wide, finished width 2.5 cm (1 in).

Interfacing: See pattern layout. Iron interfacing to outer waistband —pieces. Iron strips of interfacing, 2 cm (3/4 in) wide, to wrong side of front trouser pieces, over pocket openings. Iron strips of interfacing, 4 cm (1 5/8 ins) wide, to wrong side of back trouser —pieces, over pocket markings.

#### View B

Fine corduroy:

21 front trouser piece 2x

22 side hip yoke with

— integrated pocket piece 2x

23 back trouser piece 2x

24 front waistband 4x

25 back waistband, on a fold 2x

a) 2 welt strips (back pockets), 15 cm (6 ins) long, 5 cm (2 ins) wide (incl. allowances),

b) 2 pocket pieces (back pockets), 15 cm (6 ins) wide, 15 cm (6 ins) long (incl. allowances),  
c) left underlap piece, 13 cm (5 1/4 ins) long, 5 cm (2 ins) wide, finished width 2.5 cm (1 in).

Lining: pocket piece (piece 22) twice, and also piece b.

Interfacing: See pattern layout. Iron interfacing to outer waistband pieces. Iron strips of interfacing, 2 cm (3/4 in) wide, to wrong side of front trouser pieces, over pocket openings. Iron strips of interfacing, 4 cm (1 5/8 ins) wide, to wrong side of back trouser pieces, over pocket markings.

---

### **Step 3 — Back darts**

Stitch back darts and press toward centre.

---

### **Step 4 — Single welt pockets**

Sew single welt pockets on back trouser pieces: Mark an abutting line for welts, 1.2 cm (1/2 in) from each welt joining line (= finished width of welt). Fold welt strips lengthwise, right side facing out, and press. Baste folded welts over welt joining line so that fold edge of welt meets abutting line and open lengthwise edges lie between pocket lines. Stitch welts in place along welt joining lines. Stitch one pocket piece to each pocket joining line. Slash between lines of stitching and clip diagonally toward each last stitch, not cutting into welts or pocket pieces. Lay welts into pocket opening and pull pocket pieces to inside. Stitch remaining pocket pieces to allowances of welt joining seams. Fold small triangles at pocket opening ends to inside and stitch to welt and pocket pieces, from seam end to seam end. Trim pocket pieces even and stitch together.

---

### **Step 5 — Pleats**

Fold pleats in front trouser pieces in direction of arrows and baste. Two pleats lie over each other next to each pocket opening.

---

### **Step 6 — Hip yoke pockets:**

Stitch pocket pieces right sides together with pocket opening edges of front trouser pieces. Turn pocket pieces up and stitch to seam allowances, close to seams. Turn pocket pieces to inside. Pin pocket opening edges to side hip yokes, at abutting lines. Stitch pocket pieces together. Baste pocket pieces to wrong side of front trouser pieces, first trimming away allowance of right pocket piece along centre front.

---

### **Step 7 — Side seams**

Stitch side seams and inside leg seams. Stitch centre front seam from slit mark to inside leg seam.

---

### **Step 8 — Zip opening**

Press self-facings on slit edges to inside. Stitch along centre front on the right and 5 mm (3/16 in) before centre front on the left. Stitch zip under left slit edge of (underlap), close to teeth of zip. Pin slit closed, matching centre fronts. Stitch loose zip tape to right facing, not catching trouser piece. Baste facing in place. Topstitch opening from top to 3 cm (1 1/4 ins) before the end, as marked. Fold underlap piece lengthwise and stitch across bottom end. Turn right side out. Lay underlap under left edge of slit and pin to facing. Stitch facing to underlap, close to zip joining seam. Lay opening closed again and topstitch to the end, catching underlap.

---

## Step 9 — Waistband

Stitch side seams on waistband pieces. Stitch outer waistband unit to upper edge of trousers, leaving right end of waistband extending from centre front and stitching left end of waistband to underlap. Press allowances onto waistband. Lay inside waistband unit right sides together with attached waistband. Lay seam allowances on lower edge of overlap down again. Stitch along lower edge of overlap, across front ends of waistband, and along upper edge of waistband. Trim seam allowances, trimming corners diagonally. Turn waistband right side out. Turn in inside edge of waistband as far as zip and lay remaining edge over joining seam, without turning in. Baste inside edge in place. Work from right side to stitch along line of joining seam, catching inside edge of waistband. Work buttonholes in right end of waistband as marked. Work buttonhole for inside button in left end of waistband.

---

## Step 10 — Hem allowance

Press hem allowances to inside and sew in place by hand.

---

## Step 11 — View B

Sew as for view A. Stitch pocket  $\hat{A}$ -lining pieces to allowances of welt joining seams.

---

**BurdaStyle**

11/2010 Trousers with front pleats