

11/2010 Wrap blouse

By: burda style magazine

<http://www.burdastyle.com/projects/112010-wrap-blouse>



Wrap blouse burda style magazine patterns FAQ

Materials

georgette

Step 1 — Preparation

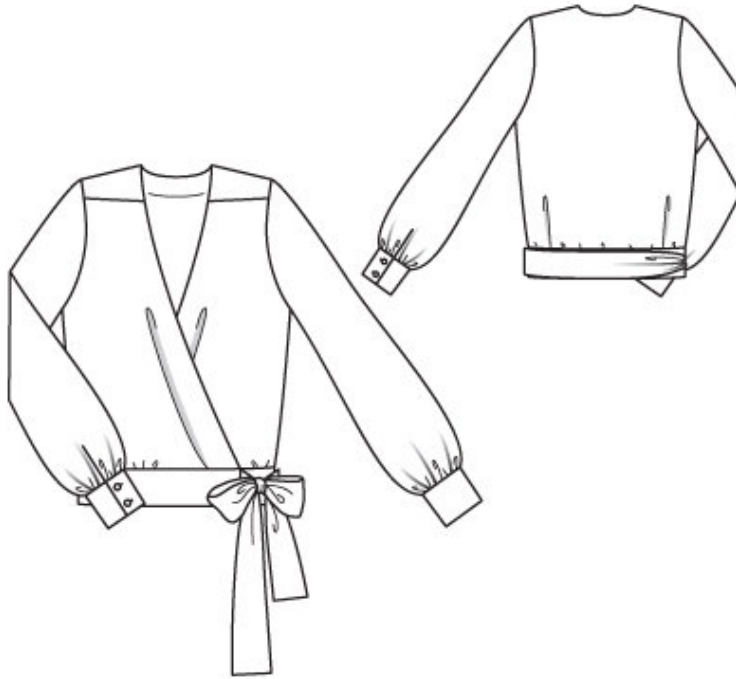
Größen, Tailles, Sizes						2		3		4		
1	N		L		K		Oberweite Tour de poitrine Bust		Tailleweite Tour des taille Waist		Hüftweite Tour des hanches Hip	
	5'6" 168 cm		5'9" 176 cm		5'3" 160 cm		ins	cm	ins	cm	ins	cm
	US	Eur.	US	Eur.	US	Eur.						
	6	32	6	64	6	16	30	76	23	58	32 ½	82
	8	34	8	68	8	17	31 ½	80	24 ½	62	34	86
	10	36	10	72	10	18	33	84	26	66	35 ½	90
	12	38	12	76	12	19	34 ½	88	27 ½	70	37	94
	14	40	14	80	14	20	36 ½	92	29 ½	74	38 ½	98
	16	42	16	84	16	21	37 ½	96	30 ½	78	40 ½	102
	18	44	18	88	18	22	39 ½	100	32 ½	82	41 ½	106
	20	46	20	92	20	23	41	104	34	86	43 ½	110
	22	48	22	96	22	24	43 ½	110	36 ½	92	45 ½	116
	24	50	24	100	24	25	45 ½	116	38 ½	98	48	122
	26	52	26	104	26	26	48	122	41	104	50 ½	128
	28	54	28	108	28	27	50 ½	128	43 ½	110	52 ½	134
	30	56	30	112	30	28	52 ½	134	45 ½	116	55 ½	140
	32	58	32	116	32	29	55 ½	140	48	122	57 ½	146
	34	60	34	120	34	30	57 ½	146	50 ½	128	60	152

Trace the pattern pieces from the pattern sheet. Trace the facing from piece 1 as a separate pattern piece. The pleat arrows on pieces 1 and 2 are marked for size 36. Remark the pleat arrows for the other sizes according to the table.

Seam and hem allowances:

Seams and edges 1.5 cm (5/8 in).

Step 2 — Cutting out



1 front 2x

â— front facing 2x

2 back with integrated front yoke,

â— on a fold 1x

3 sleeve 2x

4 back facing, on a fold 1x

a) 2 front waistband pieces, 37 â— 39 â— 41 â— 43 â— 45 cm (14 1/2 â— 15 1/2 â— 16 1/4 â— 17 â— 17 3/4 ins) long, 14 cm (5 1/2 ins) wide, finished width 7 cm (2 3/4 ins),

b) back waistband piece, 47.5 â— 49.5 â— 51.5 â— 53.5 â— 55.5 cm (18 3/4 â— 19 1/2 â— 20 3/8 â— 21 1/8 â— 22 ins) long, 14 cm (5 1/2 ins) wide,

c) right tie band, 60 cm (24 ins) long, 14 cm (5 1/2 ins) wide, finished width 7 cm (2 3/4 ins),

d) left tie band, 118 â— 120 â— 122 â— 124 â— 126 cm (46 â— 47 â— 48 â— 49 â— 50 ins) long, 14 cm (5 1/2 ins) wide, finished width 7 cm (2 3/4 ins),

e) 2 cuffs, 24.5 â— 25 â— 25.5 â— 26 â— 26.5 cm (9 3/4 â— 9 7/8 â— 10 â— 10 1/4 â— 10 1/2 ins) long, 16 cm (6 1/2 ins) wide, finished width 8 cm (3 1/4 ins),

f) 2 binding strips for sleeve vents, 20 cm (8 ins) long, 4 cm (1 5/8 ins) wide (incl. allowances).

Interfacing: See pattern layout.

Vilene Bias Tape/ stay tape: Iron to slanted front edges of front pieces and to back neck edge.

Step 3 — Yokes

Stitch integrated yokes of back piece to upper edges of fronts. Stitch side seams. Neaten seam allowances together and press up and onto back. Stitch front facings to back facing.

Step 4 — Front and neck edges

Pin facing right sides together with blouse. Stitch along front and neck edges. Lay facing forward and up and stitch to seam allowances, close to joining seam. Turn facing to inside. Press edge. Baste lower edges of facing in place.

Step 5 — Tie band

Fold each tie band lengthwise, right side facing in. Stitch along long edge and across one end. Trim allowances. Turn tie bands right side out. Press.

Step 6 — Waistband

Fold pleats in lower edge of front and back pieces in direction of arrows and baste. Gather lower edge of blouse slightly between asterisks. Stitch side seams of waistband pieces, at right side seam leaving 4 cm (15/8 in) long slits open on both outer and inner halves of waistband. Press seam allowances open. Stitch waistband to lower edge of blouse. Press seam allowances of joining seam and of other long edge onto waistband. Baste tie bands to outer half of waistband. Fold waistband lengthwise, right side facing in. Stitch across ends. Turn waistband right side out. Baste inside edge in place. Work from right side of garment to stitch in line of joining seam or sew by hand. Sew slit edges closed by hand.

Step 7 — Sleeve vents

Slash sleeve vents as marked. Spread slash edges apart to a straight line and stitch to one lengthwise edge of each binding strip, as narrowly as possible. Press binding strip over joining seam into vent, then turn in to a width of 7 mm (1/4 in). On inside, stitch fold edge of binding along joining seam. Mitre binding at top of vent, from inside. Lay binding at front edge of each vent to inside and baste at lower edge. Stitch sleeve seams. Gather lower edges of sleeves.

Step 8 — Cuff

Stitch each cuff to lower edge of sleeve. Press seam allowances of joining seam and of other long edge of cuff onto cuff. Fold cuffs lengthwise, right side facing in. Stitch across ends. Turn right side out. Sew inside edges in place. Work 2 buttonholes in front end of each cuff — 2.5 cm and 5.5 cm (1 in and 2 1/4 ins) below joining seam.

Step 9 — Sleeves

Set in sleeves, easing sleeve caps.

BurdaStyle

11/2010 Wrap blouse