

3/2011 Drop-waisted Dress with Embellished Border

By: burda style magazine

<http://www.burdastyle.com/projects/32011-drop-waisted-dress-with>



Drop-waisted Dress with Embellished Border Please Note – The pattern layout associated with this pattern is identical to the layout for 3/2011 Sleeveless Column Wedding Dress. burda style magazine patterns FAQ

Materials

Chiffon

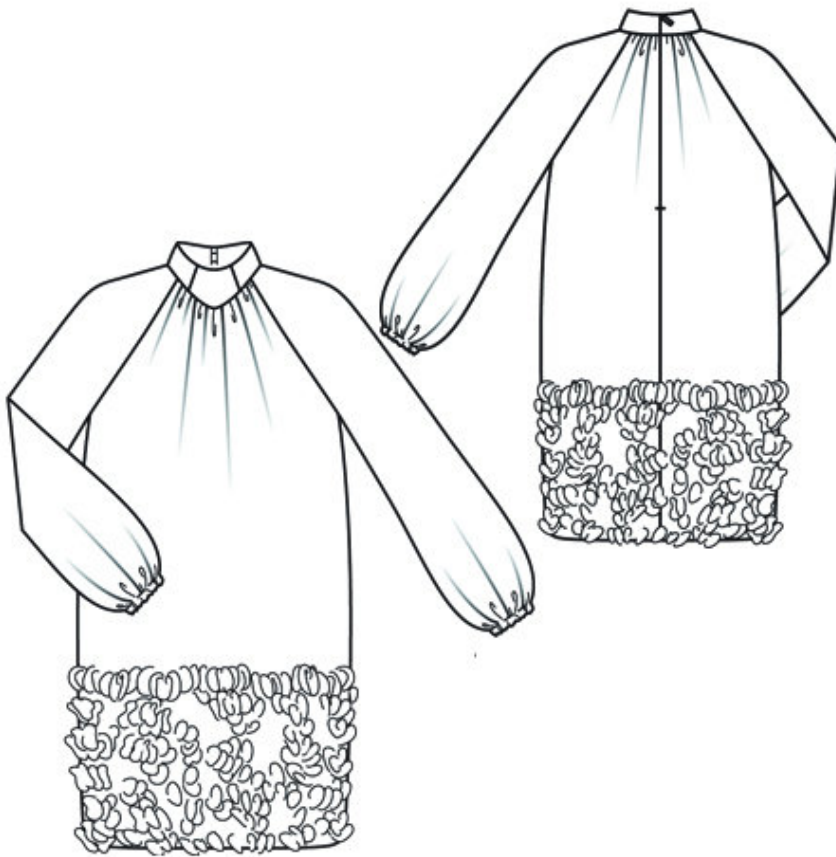
Step 1 — Preparation

Trace the pattern pieces from the pattern sheet. Cut piece 4 apart on the marked seam line = front and back collar pieces.

Seam and hem allowances:

Seams and edges 1.5 cm (5/8 in).

Step 2 — Cutting Out



Top fabric:

1 front, on a fold 1x

2 back 2x

3 sleeve 2x

4 front collar piece, on a fold 3x

â– back collar piece 6x

a) 2 fabric strips for sleeve bands, each 36 cm (14 1/4 ins) long, 9 cm (3 1/2 ins) -wide (incl. allowances).

Lining: pieces 1 and 2 to lining line. Cut lining pieces on lengthwise grain.

Interfacing: See pattern layout.

Step 3 — Stitch side seams and sleeve seams

Stitch side seams and sleeve seams. Trim seam allowances to 7 mm (1/4 in) wide, neaten together, and press onto back. Stitch darts in sleeves. Press darts toward back.

Step 4 — Stitch side seams of lining

Stitch side seams of lining, leaving an opening, approx. 20 cm (8 ins) long, in centre of one seam. Lay lining wrong sides together with corresponding pieces of outer fabric. Baste to back opening edges and to neck and armhole edges.

Step 5 — Sleeves

Stitch sleeves to armhole edges. Trim seam allowances to 7 mm (1/4 in) wide and press away from sleeves.

Step 6 — Outer collar pieces

Gather neck edges on front and back pieces. For each outer collar piece, baste one interfaced piece to piece with no interfacing, with wrong side facing right side. Treat each as one layer of fabric from now on. Remaining interfaced pieces are inside collar pieces. Stitch back collar pieces to respective front collar -piece. Stitch outer collar piece to neck edge. Press seam allowances onto collar.

Step 7 — Zipper

Sew invisible zip to back slit edges, from marked upper edge of collar. Clip seam -allowances of outer fabric at end of slit. Stitch centre back -seams on outer fabric and lining each -separately, -stitching each from lower edge to zip slit.

Step 8 — Face the collar

Lay inside collar -piece right sides together with attached outer collar piece and pin. At zip slit, turn inside collar piece back, 5 mm (3/16 in) before marked seam line, and pin to upper edge. Lay allowances on slit edges of dress to outside and pin in place, over inside collar piece. Stitch along upper edge of collar. Turn inside collar piece and allowances on slit edges to inside. Turn in inside collar piece and sew to zip tapes and to joining seam.

Step 9 — Stitch outer fabric and lining right sides together

Turn under lower edges of outer fabric and lining at one side seam and pin together with a single straight pin. Reach through opening in side seam of lining, between outer fabric and lining, to pull out lower edge of dress. Remove the pin but keep hold of the edges. Stitch outer fabric and lining right sides together. Push lower edge in place again. Sew opening in lining seam closed.

Step 10 — Elastics for sleeves

Gather lower sleeve edges to 33 cm (13 ins) long. Stitch fabric strips for sleeve bands together to match -sleeves. Fold strips in half lengthwise, right side facing out, and press. -Stitch folded strips to lower edges of

sleeves. Fold each strip over lower edge of sleeve, to inside, and baste to joining seam. Stitch from right side, close to seam, leaving 2 cm (3/4 in) open on each sleeve for elastic. Cut elastic into two pieces. Pull elastic into lower edge of each sleeve. Sew ends of elastic together for a circumference of 21 1/8 – 21 1/4 – 22 1/8 – 22 1/4 cm (8 3/8 – 8 3/4 – 8 3/4 – 9 1/8 ins). Sew seam openings closed.

BurdaStyle

3/2011 Drop-waisted Dress with Embellished Border