

01/2011 Sweatshirt top

By: burda style magazine

<http://www.burdastyle.com/projects/012011-sweatshirt-top>



Sweatshirt top burda style magazine patterns FAQ

Materials

sweatshirting

Step 1 — Preparation

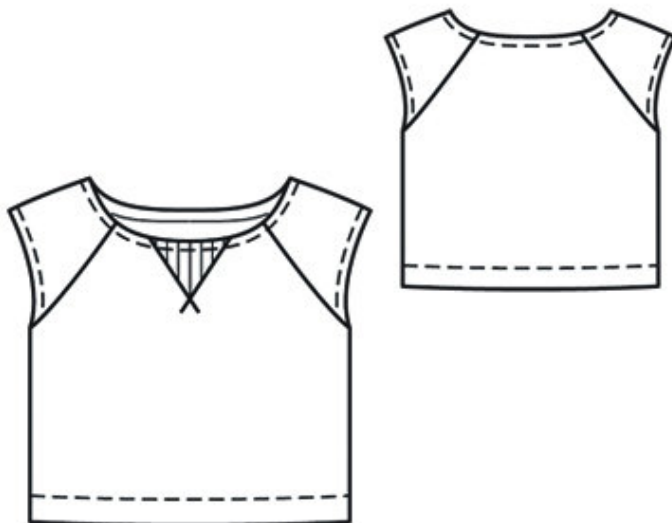
Größen, Tailles, Sizes						2		3		4		
1	N		L		K		Oberweite Tour de poitrine Bust		Tailleweite Tour des taille Waist		Hüftweite Tour des hanches Hip	
	5'6" 168 cm		5'9" 176 cm		5'3" 160 cm		ins	cm	ins	cm	ins	cm
	US	Eur.	US	Eur.	US	Eur.						
	6	32	6	64	6	16	30	76	23	58	32 ½	82
	8	34	8	68	8	17	31 ½	80	24 ½	62	34	86
	10	36	10	72	10	18	33	84	26	66	35 ½	90
	12	38	12	76	12	19	34 ¾	88	27 ¾	70	37	94
	14	40	14	80	14	20	36 ¾	92	29 ¾	74	38 ¾	98
	16	42	16	84	16	21	37 ¾	96	30 ¾	78	40 ¾	102
	18	44	18	88	18	22	39 ½	100	32 ½	82	41 ¾	106
	20	46	20	92	20	23	41	104	34	86	43 ½	110
	22	48	22	96	22	24	43 ½	110	36 ¾	92	45 ¾	116
	24	50	24	100	24	25	45 ¾	116	38 ¾	98	48	122
	26	52	26	104	26	26	48	122	41	104	50 ¾	128
	28	54	28	108	28	27	50 ½	128	43 ½	110	52 ¾	134
	30	56	30	112	30	28	52 ¾	134	45 ¾	116	55 ¾	140
	32	58	32	116	32	29	55 ¾	140	48	122	57 ¾	146
	34	60	34	120	34	30	57 ¾	146	50 ¾	128	60	152

Trace the pattern pieces from the pattern sheet. Follow lines and details for style 120. Trace patch from piece 21 as a separate pattern piece.

Seam and hem allowances:

Seams and edges 1.5 cm (5/8 in), hem 4 cm (15/8 ins), sleeve hems 2 cm (3/4 in).

Step 2 — Cutting out



Sweatshirting:

21front, on a fold 1x

22back, on a fold 1x

23sleeve 2x

a) facing strip for neck edge, 78 — 80 — 82 — 84 — 86 cm (30³/₄ — 31¹/₂ — 32¹/₂ — 33 — 34 ins) long, 4 cm (1⁵/₈ ins) wide (incl. allowance).

Rib knit:

21patch, on a fold 1x

Step 3 — Triangular patch

Trim away allowances on angled edges of patch. Lay patch on front as marked and baste in place. Beginning at upper edge, stitch along angled edges of patch with a coverlock stitch or other decorative stitch, then continue stitching, 2 cm (3/4 in) past bottom point, as marked

Step 4 — Hem allowances

Turn sleeve hem allowances to inside, turn half in, and stitch. Stitch sleeves to front and back (seam numbers 2 and 3), leaving side seam allowances extending. Trim allowances to 7 mm (1/4 in) wide, neaten together, and press away from sleeves.

Step 5 — Seam allowances

Stitch side seams. Press seam allowances open. Sew top ends of seam allowances in place by hand.

Step 6 — Neck edge

Stitch narrow edges of facing strip together. Fold facing strip lengthwise, right side facing out, and press. Pin folded facing strip to neck edge so that fold edge of strip lies on garment piece, 1.2 cm (1/2 in) past seam line. Stitch strip to neck edge. Trim seam allowances. Turn facing strip to inside and press edge. Topstitch 1 cm (3/8 in) from neck edge.

Step 7 — Hem

Press hem allowance to inside. Working from right side, stitch hem in place with twin needle, stitching 3.5 cm (1 1/2 ins) from lower edge.

BurdaStyle

01/2011 Sweatshirt top