

07/2011 Sheer top

By: burda style magazine

<http://www.burdastyle.com/projects/072011-sheer-top>



Sheer top burda style magazine patterns FAQ</a

Materials

Knit tulle

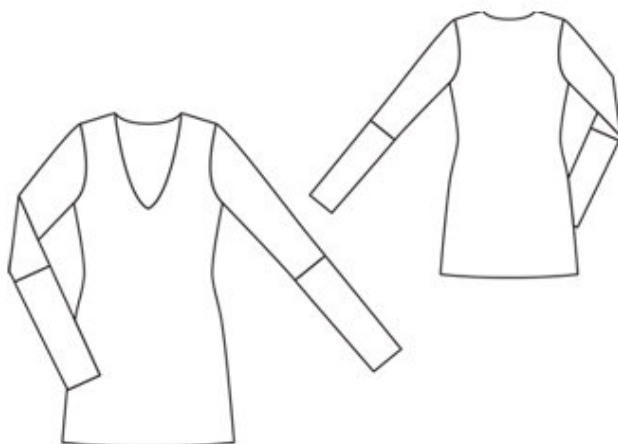
Step 1 — Preparation

Trace the pattern pieces from the pattern sheet. Follow lines and details for views A and B. For view B, lengthen pieces 1 and 2 as indicated. Cut piece 3 apart on the marked seam line = upper sleeve and lower sleeve pieces.

Seam and hem allowances:

Seams and edges 1 cm (3/8 in), no allowances for hem and sleeve hem.

Step 2 — Cutting out



1 front, on a fold 1x

2 back, on a fold 1x

3 upper sleeve piece 2x

3 lower sleeve piece 4x

Step 3 — Side seams

Stitch side seams and shoulder seams. Neaten seam allowances together and press onto back.

Step 4 — Neck

Neaten neck edge with an overlock machine (serger) thereby also trimming away the allowance. Or use an overlock stitch setting of your sewing machine to stitch along marked neck edge. Then trim away allowance close to stitching.

Step 5 — Sleeves

Stitch seams on upper sleeve pieces. Fold lower sleeve pieces lengthwise and pin seam edges together, right side facing in. Lay pairs of lower sleeve pieces together and stitch together along sleeve seam edges. Reach into one piece from upper edge, grasp lower edges of both pieces, and pull them out to turn the sleeve right side out. Stitch doubled lower sleeve pieces together to upper sleeve pieces. Press seam allowances up.

Step 6 — Sleeve caps

Set in sleeves, easing sleeve caps.

BurdaStyle

07/2011 Sheer top