

# 07/2011 Animal print trousers

By: burda style magazine

<http://www.burdastyle.com/projects/072011-animal-print-trousers>

---



Animal print trousers burda style magazine patterns FAQ</a

## Materials

Batiste

---

## Step 1 — Preparation

Lay the tissue paper on the pattern piece and pin it in place. Trace each pattern piece in the desired size, also tracing all pattern lines and markings. Trace the pocket as a separate pattern piece. Cut out all paper pattern pieces. Lay them on the fabric as shown in the cutting layout, right.

Extra tip: To find the correct size, measure your hips.

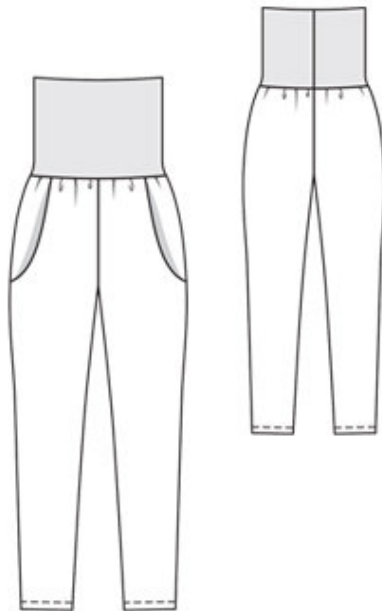
Hip measurement for size 34 = 86 cm; size 36 = 90 cm;

size 38 = 94 cm; size 40 = 98 cm; size 42 = 102 cm;

size 44 = 106 cm.

---

## Step 2 — Cutting out



pattern pieces should be laid on the folded batiste:

front pants piece and pocket piece (1)

hip yoke piece (2)

back pants piece (3)

Please note: No cutting layout is given for the waistband. Just draw the waistband piece on a single layer of jersey fabric, as follows:

Width, for size 34: 78 cm; size 36: 82 cm; size 38: 86 cm; size 40: 90 cm; size 42: 94 cm; size 44: 98 cm.

Height for all sizes: 53 cm.

All measurements include seam allowances.

---

### **Step 3 — Seam allowances**

Pin pattern pieces to folded fabric, noting straight grain arrows. Mark seam allowances along edges of pattern pieces: 4 cm (15/8 ins) for hem and 1.5 cm (5/8 in) on all other edges. Cut out fabric pieces along these marked lines. Make small clips in the seam allowances to mark placement lines (hip yoke, side and upper edges) and seam marks on pants pieces (knee level).

---

### **Step 4 — Pockets**

Pin each pocket piece to pocket opening edge of pants front piece, right sides facing. Stitch 1.5 cm (= seam allowance width) from fabric edges. To do this, set your machine for this seam allowance width (see machine's manual) or mark the seam allowance on your machine's needle plate, with adhesive tape (see *Extra tip* in our 6/2011 issue, page 29).

---

### **Step 5 — Trim allowances**

Trim the seam allowances on the pocket opening edges to 5 mm (3/16 in) wide. Press the seams open. Now fold each pocket piece to the inner side of the pants and press the pocket opening edge — the seam lies exactly along the fold edge.

---

### **Step 6 — Pant pieces**

Now lay each pants front piece on a hip yoke piece so that the pocket opening edge meets the placement lines on the upper and side edges of the hip yoke piece (for this reason, you made the small clips as described in step 1). Pin the upper and lower sections of the pocket opening edge to the hip yoke piece (see illustration).

---

### **Step 7 — Pockets**

Fold the pants front piece back out of the way. Pin the pocket piece to the hip yoke piece, then stitch. Finish the edges of the pocket piece and hip yoke piece together (with zigzag stitching or overlock stitching). Fold the pants piece down again. Baste the stitched pocket to the side and upper edges of the pants piece.

---

### **Step 8 — Edges**

Lay each pants front piece on a pants back piece, right sides facing. Pin the side edges together, matching the seam marks (clips) at knee level. Stitch 1.5 cm from fabric edges. Finish the edges of the seam allowances together and press the allowances toward the pants back.

---

### **Step 9 — Legs**

Now lay the inner leg seam edges exactly together, right side facing in, again matching the seam marks (clips) at knee level. Stitch 1.5 cm from fabric edges. Finish the edges of the seam allowances together and press the allowances toward the pants back.

---

## Step 10 — Crotch curve

On each pant leg, finish the edge of the allowance on centre seam edge. Turn one pant leg right side out. Pull this pant leg into the other pant leg, right sides facing. Pin the pant legs together along the centre seam edges and stitch these edges together. Pull the pant legs apart again. Press the seam open, from each upper edge to the beginning of the crotch curve.

---

## Step 11 — Waistband

Fold the waistband piece so that the 53 cm long edges meet and the right fabric side is facing in. Stitch the 53 cm long edges together, 1 cm (3/8 in) from the fabric edge (= centre back seam). Mark the centre front of the waistband directly opposite this seam (i.e. make small clips in the upper and lower fabric edges).

---

## Step 12 — Waistband

Press the seam open. Fold the waistband in half as shown (= 26.5 cm wide), with the right fabric side facing out, and pin the open edges together.

---

## Step 13 — Waistband to pants

Pull the waistband over the pants. The marked centre front of the waistband meets the centre front seam of the pants and the waistband seam meets the centre back seam. Now stretch the waistband to match the upper edge of the pants and pin it to the pants. Stitch the waistband to the pants. Finish allowances together and press toward the pants.

---

## Step 14 — Pant legs

On each pant leg, fold the 4 cm wide hem allowance (as mentioned in step 1) to the inside (wrong side of fabric) and press the fold. On the edge of the 4 cm wide hem allowance, fold 1.5 cm under then stitch the hem in place, stitching 2 cm (3/4 in) from the lower edge of the pant leg.

---

**BurdaStyle**

07/2011 Animal print trousers