

Pleated Coat 04/2012

By: burda style magazine

<http://www.burdastyle.com/projects/pleated-coat-042012>



This pretty coat is a girl's best friend on a chilly day. It features waist pleats and oversized pockets perfect for gathering findings on an afternoon adventure. We made it in linen for a soft spring time jacket, but try making it in wool for a warmer feel.

Materials

Linen, width: 150 cm (59 ins) length: 1.30 1.35 1.40 1.45 1.50 m (1 1/2 15/8 1 5/8 1 3/4 1 3/4 yds) (plain)
length: 0.55 m (3/4 yd) (lengthwise stripes). 1 flat inside button.

Step 1 — Preparations



This pattern is printed on 8.5 × 11 sheets of plain paper. Do not scale or center pages before printing. Wait until all sheets are printed out before beginning to tape them together. **Do not cut out pattern pieces yet**— Arrange the sheets on a large, hard, flat surface so that they fit together, matching up like numbers and letters (i.e. 6A to 6A). To tape pattern together, fold under the margin of one piece (6A) and tape right against the line of it's matching number/letter (6A).

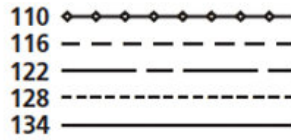
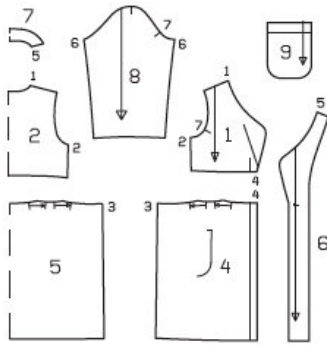
Trace the pattern pieces from the pattern sheet following the lines and markings for the correct size and the correct style (143). (This pattern also includes pattern pieces, lines and markings for style 142 that should be ignored.)

burda style magazine pattern do not have seam allowance included.

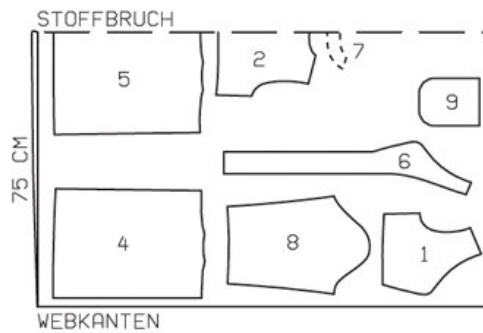
Seam and hem allowances to be added: Seams and edges 1.5 cm (5/8 in), hem and sleeve hems 4 cm (15/8 ins).

Step 2 — Cutting Out

Pattern pieces 1 to 9



Cut the pieces as in this diagram with a fabric width of 150 cm



Stoffbruch = Fabric Fold
Webkanten = Selvage

Plain fabric:

- 1 upper front 2x
- 2 upper back, on a fold 1x
- 4 lower front 2x
- 5 lower back, on a fold 1x
- 6 front facing 2x
- 7 back facing, on a fold 1x
- 8 sleeve 2x
- 9 pocket 2x

Striped fabric:

bias strip to bind inside edges, a total of 3.70 3.75 3.80 4.00 4.10 m (4 1/8 4 1/4 4 1/4 4 3/8 4 1/2 yds) long, 4 cm (15/8 ins) wide (incl. allowances).

Step 3 — Sewing



Stitch shoulder seams. Stitch side seams on upper and lower pieces. Press seam allowances open. Fold pleats in lower piece in direction of arrows and baste. Stitch upper unit to lower unit. Press seam allowances toward upper unit.

Work buttonhole in right front facing. Stitch shoulder seams of facing.

Bind inside facing edge with bias strip: Trim away seam allowance on inside facing edge. Pin bias strip to facing edge and stitch 1 cm (3/8 in) from edge. Fold strip over edge to inside and baste. Work from right side to topstitch close to binding edge.

Pin facing right sides together with coat. Stitch along front and neck edges. Trim seam allowances. Turn facing to inside. Press edges.

Unfold facings at hem. Bind edges of hem allowance. Press hem allowance to inside and sew in place by hand. Turn facings to inside again. Sew to hem allowance and to seams. Topstitch 1 cm (3/8 in) from front and neck edges.

Bind edges of hem allowances on sleeves. Stitch sleeve seams. Press sleeve hem allowances to inside and sew in place by hand.

Set in sleeves matching up underarm point and top sleeve to shoulder seam.

Bind inside edge of pocket self- facings with bias strips, then press facings to inside. Press allowances on side and lower pocket edges to inside. Pin pockets to fronts, at abutting lines. Sew side and lower pocket edges in place, with invisible stitches, by hand.

Fold lapels to outside, on fold lines, and hold each in place with one cross stitch, approx. 1 cm (3/8 in) in size.

BurdaStyle

Pleated Coat 04/2012