

Nichola

By: burdastyle

<http://www.burdastyle.com/projects/nichola>



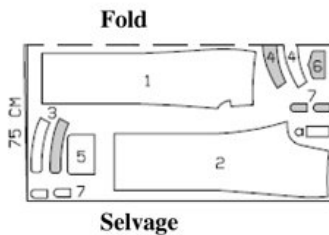
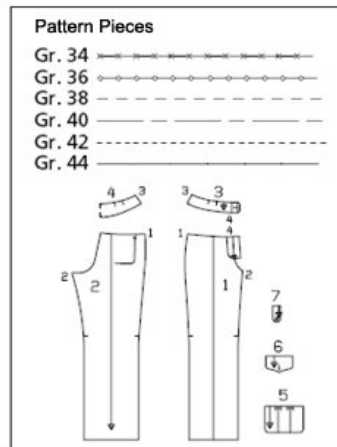
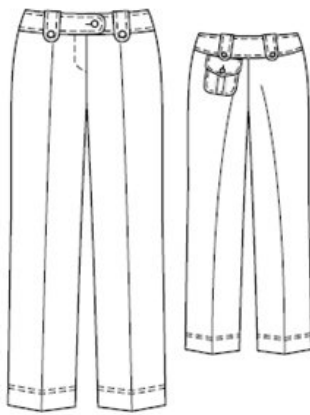
Cold winds stop right here at these straight and strong pant legs, and yes Australia – the sun can stay away as well – we used wool but feel free to use linen or denim to make these straight leg pants your perfect all weather suitable friend. Easy to sew and figure flattering!

Materials

Wool

Step 1

Burda Download Pattern Easy Fashion Pants 9175- Instructions



Sewing



PATTERN

- 1 Front Pant Piece 2x
- 2 Back Pant Piece 2x
- 3 Front Seam 4x
- 4 Back Seam at Fold 2x
- 5 Pocket 1x
- 6 Flap 2x
- 7 Latch 8x

Sizes 2 (EU 34), 4 (EU 36), 6 (EU 38), 8 (EU 40), 10 (EU 42), 12 (EU 44):

Pant Length: 43 inches (107cm)

The waistband sits about 1.5 inches (3.8 cm) below the waist. Seam width: about 21 inches (52cm)

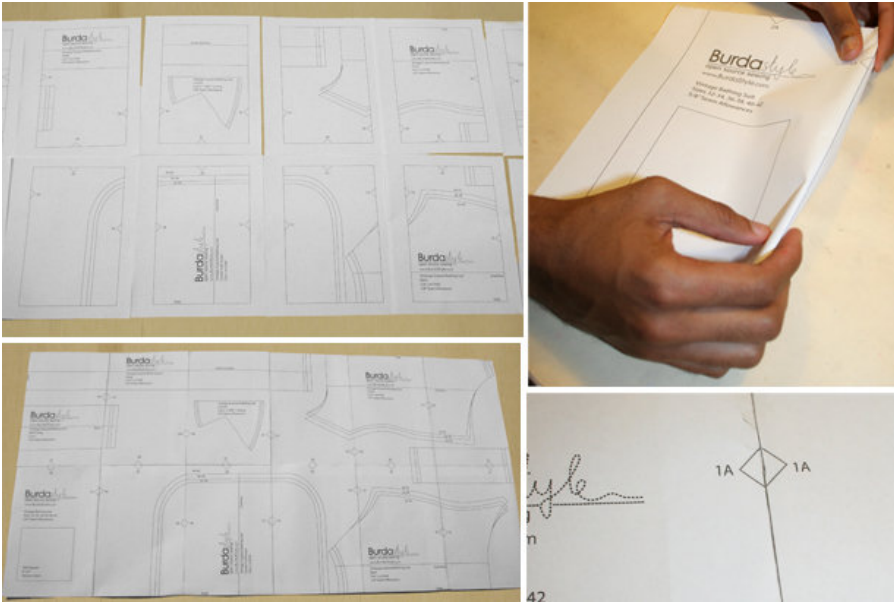
Left slit underlap is 4.5 inches (11cm) long, 2 inches (5cm) wide, finished width is 1 inch (2.5cm).

You need:

FABRIC, 60 inches (150 cm) wide for all sizes, 0.35 fusible bias tape, 36 inches (90cm) wide.

1 Zipper, 4 inches (10 cm) long. Six buttons.

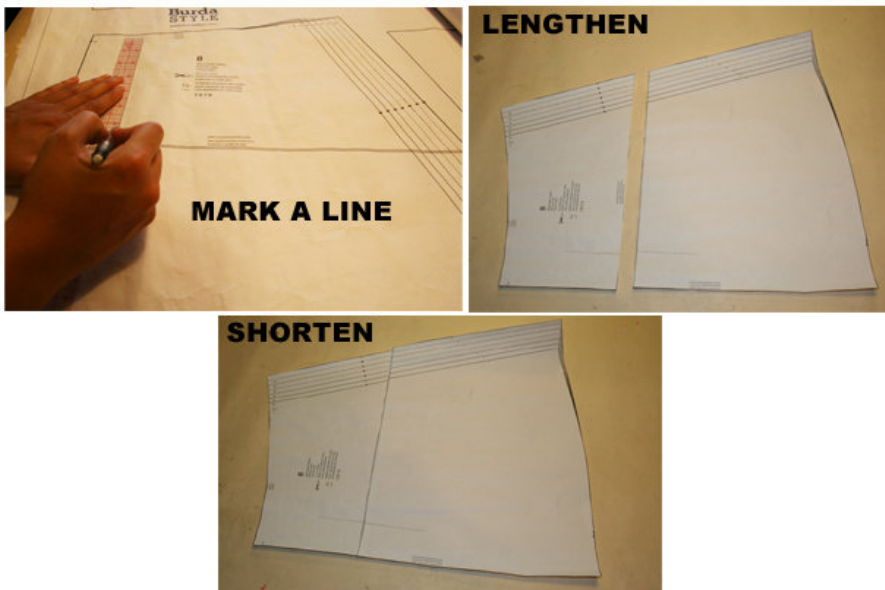
Step 2



The patterns can be printed out at the copy shop. If you decide to print them at home, follow the instructions: Paper cut for ANSI A (German DIN A4) prints:

The patterns are printed out on 28 sheets with a thin frame. Wait until all sheets are printed out. Arrange the sheets so that they fit together (see additional page with the overview of the prints). Fold the single sheets on the upper and right edge along the thin frame lines. Begin with the left lower sheet and then tape the frame lines together precisely.

Step 3



ADJUST PATTERN SIZES

Select your size according to the Burda-dimension table: dresses, blouses, jackets and coats according to the bust size, trousers and skirts according to the hip width. Change the pattern to fit your measurements if they

deviate from the Burda-size chart. Cut out the pattern according to your size.
Refer to our *Adjust patterns for mixed sizes* technique

LENGTHENING OR SHORTENING THE PATTERN PIECES

Our pattern is calculated for a height of 5'6" (168 cm). If you are taller or shorter, you can adjust the pattern pieces along the lines marked "lengthen or shorten here". This way the proper fit is maintained. Always adjust all pattern pieces along the same line to the same degree.

How to lengthen and shorten pattern pieces:

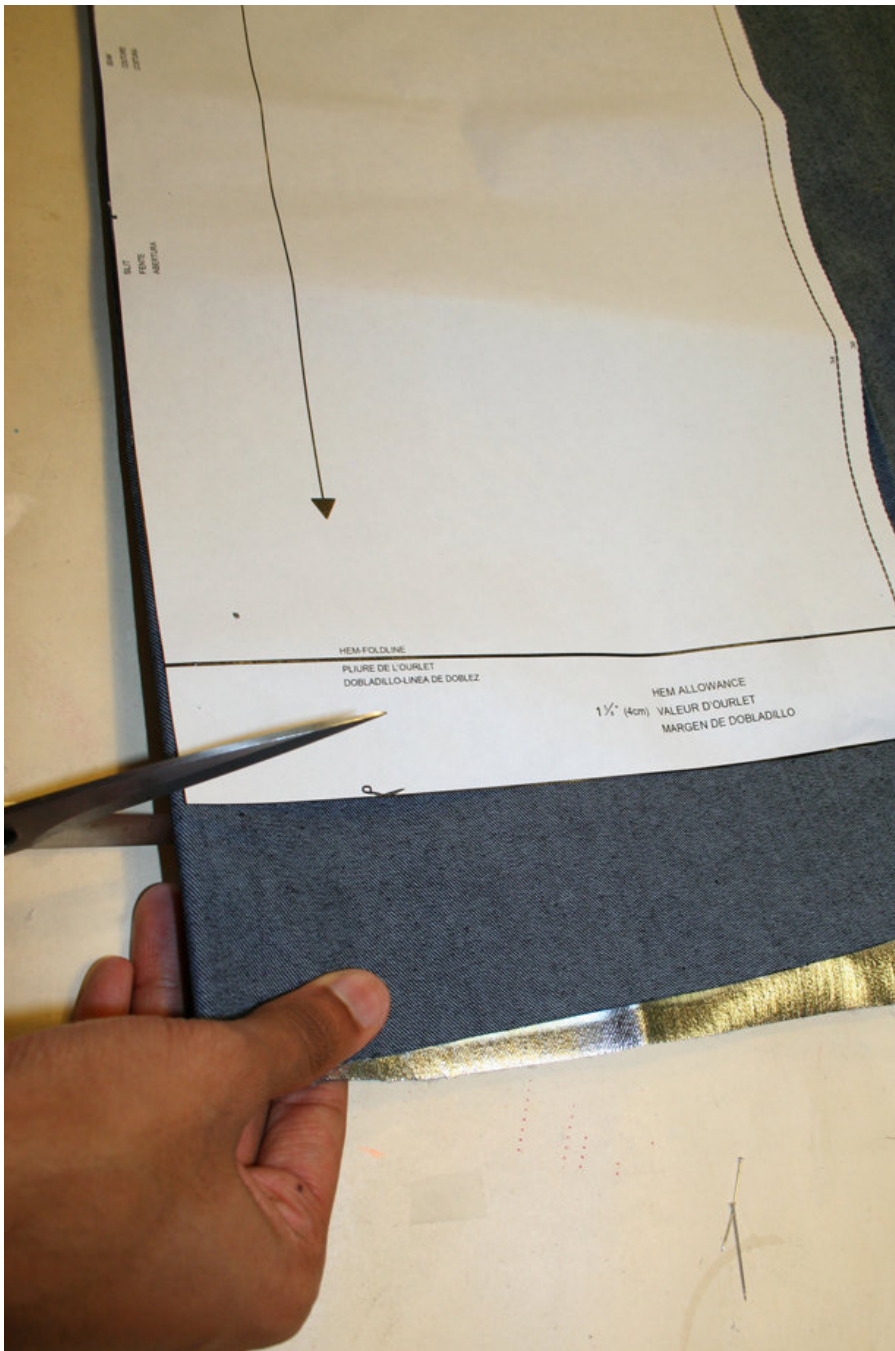
Cut the pattern pieces along the marked lines

To lengthen, slide the two halves of the pattern piece as far apart as necessary.

To shorten, overlap the two halves of the pattern piece as far as necessary. Blend the side edges.

The dotted line for the zipper in part 1 is only depicted for a size 2 (EU 34). For all other sizes, draw the dotted line at the same distance from the front middle as in a size 2. Pay attention to the length of the slit.

Step 4



CUTTING OUT

FOLD () means: Cut on the fold, the fold being the center of the pattern piece, but never a cut edge or seam. The piece should be cut double, with the fold line forming the center line. Pattern pieces that are outlined with a broken line in the cutting diagrams are to be placed face down on the fabric. The cutting diagrams on the pattern sheet show how the pattern pieces should be placed on the fabric.

The cutting diagrams show the placement of the pattern on the fabric.

For a single layer of fabric, the pattern pieces are pinned to the right side. For double layers of fabric, the right sides are facing and the pattern pieces are pinned to the wrong side. The pattern pieces that are shown extending over the fold of the fabric in the cutting diagram should be cut last from a single layer of fabric.

Step 5

SEAM AND HEMLINE ALLOWANCES are included on an average:

5/8" (1.5 cm) for all edges and stitches. Using BURDA copying paper, transfer the lines and signs of the pattern onto the wrong side of the fabric. Instructions can be found in the packaging.

Sewing

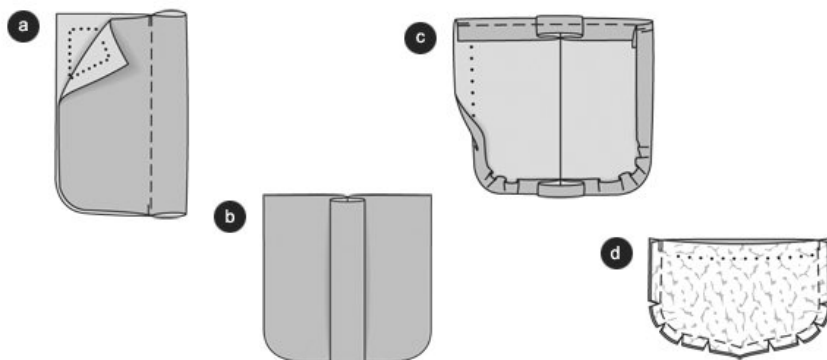
While sewing, the right sides of the fabric are facing.

Transfer all lines of the pattern onto the right side of the fabric using basting stitches.

Interfacing

All parts that are depicted as grey areas in the pattern layout should be cut from lining with the same grain as the fabric parts. Iron the interfacing onto the wrong side of the outer waistband pieces and the outer flap pieces.

Step 6



Pocket

For the creases, fold the pocket so that the marked stitching lines meet, left side inside. Stitch along the marked stitching lines (a). Fold apart the pockets and iron the crease, so that the crease middle meets the stitching lines (b). Baste pocket all around. Fold over the seam allowance of the upper pocket edge to the inside and stitch neatly

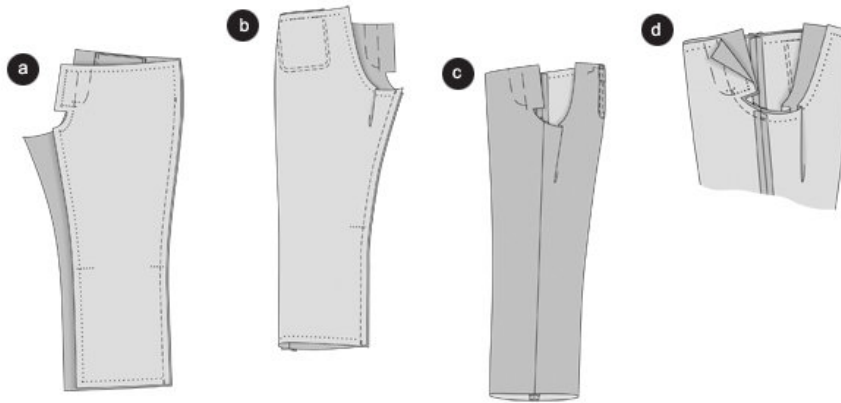
Fold the seam allowances of the remaining pocket edges over to the inside ©

Pin the pocket onto the back left pant piece so that it meets the base lines, stitch neatly, 7mm (about 1/4") wide.

Flap

Pin flap pieces on top of each other, right sides facing. Stitch, leave the base seam open, trim seam allowances, cut in at the rounded edges (d). The remaining side seams won't be sewed until the waistband has been attached. Fold apart, iron and baste seam allowances.

Step 7



Crease at the front pant pieces

Fold the front pant pieces at the line CREASE, left side inside. Iron crease.

Side Seams

Place the front pant pieces onto the back pant pieces, right sides facing, pin side seams. Stitch, starting at about 2â– (5 cm) below the upper pant edge. Secure the seam beginning and end (a).

Inner Leg Seams

Fold the pant pieces lengthwise, right side inside. Pin inner leg seams. Stitch (b). Fold apart and iron seam allowances, baste. Turn over the pant legs, right side outside.

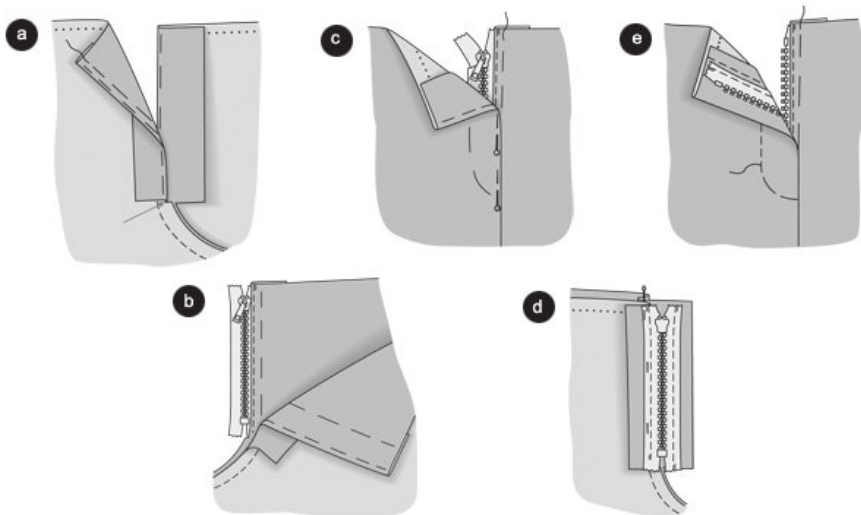
Crease, back pant pieces

Place the pant pieces onto the ironing board, so that the inner leg seam meets the side seam and the front crease is completely straight. Iron crease into the back pant piece. ©

Front Middle Seam

Baste the seam allowances of the front facings, the front middle and the back middle seams, consecutively. Turn one pant leg, left side outside. Push pant legs into each other, right fabric sides and inner leg seams meet. Pin the front middle seam coming from the arrow mark until you reach the inner leg seam. Stitch. Secure seam end and beginning (d). Pull the pant legs apart again. Turn flap. Pin edge, iron and stitch neatly, 7 mm (about 1/4") wide. Sew in button hole. Pin the flap in between the vertical lines of the seam allowances on the left back pant piece.

Step 8



Zipper Slit

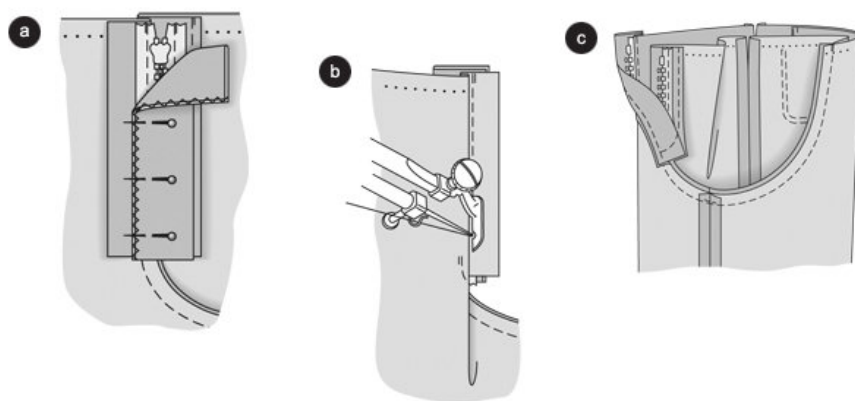
Women's pants close from right to left. That means that you have to pin the facing at the Marked front middle over to the inside. Pin the facing over to the inside at the left slit edge, 5 mm (1/5 ") next to the front middle, so that the zipper won't show. Make sure to cut the seam allowances at the end of the slit (arrow) until you are at about 5mm (1/5") from the seam. Iron edges (a).

Pin the left slit marking close to the zipper teeth onto the zipper band and stitch neatly with the zipper foot of your sewing machine (b).

Pin slit closed middle on middle ©. Pin the facing of the right pant piece to the second zipper band, do not take in the pants when doing this.

Stitch the Zipper onto the facing (d). Coming from the right side of the pants, stitch the right closing edge at the marked stitching line going from the top until you reach the beginning of the rounded edge, taking in the facing (e).

Step 9



Fold the under lap in half lengthwise, right side inside. Stitch the lower edges onto another. Trim seam allowances. Fold over the under lap, pin and iron edges. Baste the open long edges that are held together. Pin the under lap onto the seam allowance of the left slit edge from the inside so that the basted edge is lying

on the zipper band and the selvage is lying 3 cm (1 1/5 inches) away from the front middle (a). Stitch the facing of the left slit edge onto the under lap close to stitching line (b). Close zipper.

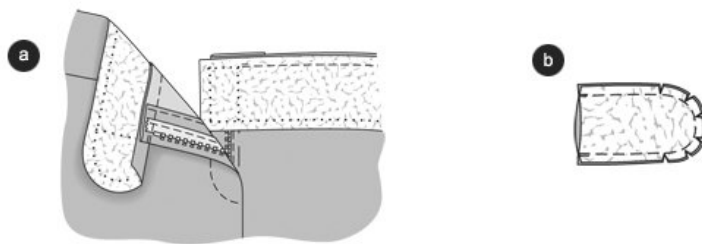
Pin the slit closed middle on middle once again and stitch the remaining zipper closure stitching line, taking in the under lap, too. Pull thread to the inside and tie.

Back Middle Seam:

Push the pant legs into each other, right sides facing. Pin the back middle seam, seam lines meet. Stitch ©. Secure seam ends.

Tip: Since the middle seam will be strained, stitch the seam twice with the stretch or triple stitch (see instructions of your sewing machine). Fold apart and iron the seam allowances starting at the top until you reach the beginning of the crotch.

Step 10



Attaching the Waistband

Pin the front waistbands with interfacing right sides facing onto the front pant pieces, allowing the front right waistband end to overlap. Pin the left front waistband end onto the under lap. Stitch. Cut the left front waistband 5/8 inch (1.5 cm) next to the line that says “left edge” (a).

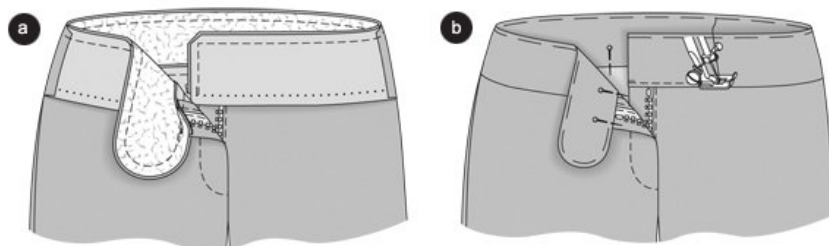
Pin the reinforced back left waistband onto the back pant piece. Stitch. Trim seam allowances back to 5mm (1/5 “), iron into the waistband pieces. Place the front pant pieces right sides facing onto the back pant pieces, pin the remaining side seams and consecutively the side seams of the waistband. Stitch. Fold apart and iron seam allowances.

Latch

Pin the latch pieces with interfacing onto the latch pieces without interfacing right sides facing. Stitch, leaving the base edges open. Trim seam allowances, cut in several times at the rounded edge (b).

Turn latch. Pin edges, iron, stitch neatly, allowing 7 mm (about 1/4”). Pin the open latch ends in between the vertical line on the seam allowance of the upper waist band edge.

Step 11



Doubling the Waistband

Stitch the side seams at the waistband pieces that are not reinforced with interfacing. Fold apart and iron seam allowances. Place the waistband that is not reinforced right sides facing onto the waistband that is reinforced, pin the upper edges and front edges onto each other. When doing this, place the seam allowance of the base seam downward at the right front end of the waistband. Stitch coming from the reinforced waistband (a).

Trim seam allowances, cut in at the rounded edges, cut diagonally at the edges. Turn the waistband that is not reinforced over to the Inside. Pin edges. Pin the upper waistband folded in onto the base seam. Stitch the around the waistband, allowing 7 mm (about 1/4"), coming from the right pant piece and stitching the inner half at the base seam (b). Add in the button hole into the right front edge of the waistband (see instructions of your sewing machine). Attach the button at the left front edge waistband. Place the latch downward. Sew the small buttons onto the latch ends, taking in the pants.

Hem

Baste seam allowances, fold over to the inside and pin, then iron. Stitch the lower pant leg allowing 2.5 inches (6.35cm), stitching the seam allowances. Iron the creases at the lower pant legs again.

BurdaStyle

Nichola