

01/2012 Fur waistcoat

By: burda style magazine

<http://www.burdastyle.com/projects/012012-fur-waistcoat>



Fur waistcoat burda style magazine patterns FAQ

Materials

Fake fur

Step 1 — Preparation



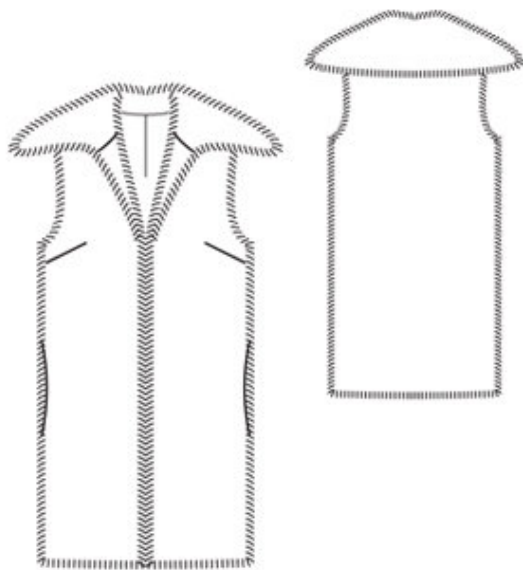
Paper cut for ANSI A (German DIN A4) prints:

This pattern is printed on 8.5 × 11 sheets of plain paper. Do not scale or center pages before printing. Wait until all sheets are printed out before beginning to tape them together. **Do not cut out pattern pieces yet**— Arrange the sheets on a large, hard, flat surface so that they fit together, matching up like numbers and letters (i.e. 6A to 6A). To tape pattern together, fold under the margin of one piece (6A) and tape right against the line of it's matching number/letter (6A).

burda style magazine pattern do not have seam allowance included.

Seam and hem allowances to be added: Seams and edges 1.5 cm (5/8 in).

Step 2 — Cutting out



Fake fur:

1 front 2x

2 back, on a fold 1x

3 collar, on a fold 2x

Lining:

piece 1 minus width of facing; piece 2; and pocket piece (from piece 1) 4x.

Step 3 — Note

When stitching, push the hairs of the fur onto the garment piece, away from the seam. Press carefully. Test-iron a scrap of fabric first. Or smooth the seam allowances open by hand and sew in place with a few long hand stitches, if necessary.

Step 4 — Bust darts

Stitch bust darts. Press down. Stitch shoulder seams. Press seam allowances open.

Step 5 — Lining

Stitch darts of lining. Stitch front lining pieces to front facings, leaving approx. 8 cm (3 1/4 ins) open at bottom. Stitch back lining piece to front lining pieces and front facings (shoulder seams).

Step 6 — Facings

Lay facings with lining right sides together with waistcoat. Stitch lining to armhole edges. Trim seam allowances. Leave facings and lining lying right sides together with waistcoat for the time being.

Step 7 — Collar

Stitch collar pieces together along outer edges, right sides facing, beginning at seam number 2. Trim allowances. Turn collar right side out and press. Lay collar between waistcoat and facing / lining. Stitch under collar to neck edge and stitch top collar piece to facing and lining. Press seams open.

Step 8 — Collar

Turn waistcoat right side out by pulling fronts into back through shoulder tunnel. Pin collar joining seams together. Reach between main fabric and lining to pull out pinned-together collar joining seams. Stitch seam allowances together, close to collar joining seam. Push edges in again.

Step 9 — Armhole

Press armhole edges.

Step 10 — Front

Lay fronts right sides together with back, turning lining up. Stitch side seams on main fabric and lining as continuous seams. On main fabric, do not stitch across pocket opening edges.

Step 11 — Inseam pockets

Pin pocket pieces right sides together with seam allowances of pocket opening edges. Stitch back pocket pieces along seam line and stitch front pocket pieces 7 mm (1/4 in) from seam line. Press pocket pieces onto front, trim even, and stitch together.

Step 12 — Hem

Turn hem allowance to inside and sew in place by hand. Sew inside facing edges in place loosely by hand. Pin a fold, approx. 1 cm (3/8 in) deep, in lining, above hem. Turn in lining and sew to hem allowance by hand. Lay extra length of lining down and press. Sew remaining front edges of lining in place.

BurdaStyle

01/2012 Fur waistcoat