

# Linda

By: burdastyle

<http://www.burdastyle.com/projects/linda>

---



Get swingin' with our full and flow-y Linda circle skirt sewing pattern. This beginner-friendly project has a ton of fashion potential. Combine it with some cool boots and a cowboy shirt for a dress-down look, or pair it with heels and a silk blouse for a secretarial feel.

# Materials

Wool

## Step 1


**burda Download-Pattern  
Skirt 8164- Instructions**

●●□ easy


		45 ins / 114 cm					55 ins / 140 cm					59 ins / 150 cm										
Sizes	US	6	8	10	12	14	16	18	6	8	10	12	14	16	18	6	8	10	12	14	16	18
	Eur.	32	34	36	38	40	42	44	32	34	36	38	40	42	44	32	34	36	38	40	42	44
	yds	-					-					1 1/2										
	m	-					-					1.85										
		-					-					-										
Lining	yds	2 1/2					1 1/2					-										
	m	2.15					1.55					-										

→ with nap **IMPORTANT!** extra fabric required to match plaids

lightweight  
wools, tweed,  
boucle



Interfacing  
36" x 55"  
(90 cm x 140 cm)



1x

7" (18 cm)

right side

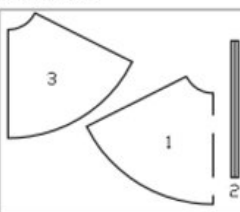
wrong side


interfacing

lining

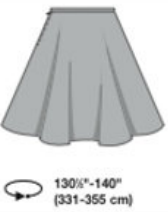
batting

**Pattern pieces:**





24" (61 cm)



130 1/2"-140"  
(331-355 cm)

### Pattern Pieces

- 1 Front and Back Skirt Piece 2x
- 2 Waistband 1x
- 3 Front and Back Lining 4x

## Step 2

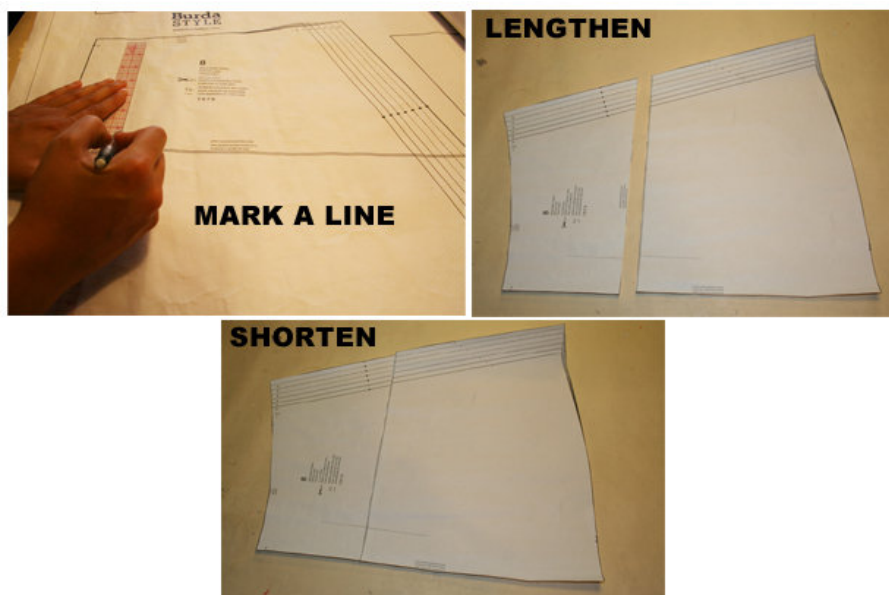


The patterns can be printed out at the copy shop. If you decide to print them at home, follow the instructions:  
Paper cut for ANSI A (German DIN A4) prints:

The patterns are printed out on 27 sheets with a thin frame. Wait until all sheets are printed out. Arrange the sheets so that they fit together (see additional page with the overview of the prints). Fold the single sheets on the upper and right edge along the thin frame lines. Begin with the left lower sheet and then tape the frame lines together precisely.

---

### Step 3



#### ADJUST PATTERN SIZES

Select your size according to the Burda-dimension table: dresses, blouses, jackets and coats according to the bust size, trousers and skirts according to the hip width. Change the pattern to fit your measurements if they deviate from the Burda-size chart. Cut out the pattern according to your size.

Refer to our 'Adjust patterns for mixed sizes' technique

#### LENGTHENING OR SHORTENING THE PATTERN PIECES

Our pattern is calculated for a height of 5' 6" (168 cm). If you are taller or shorter, you can adjust the pattern pieces along the lines marked "lengthen or shorten here". This way the proper fit is maintained. Always adjust all pattern pieces along the same line to the same degree.

How to lengthen and shorten pattern pieces:

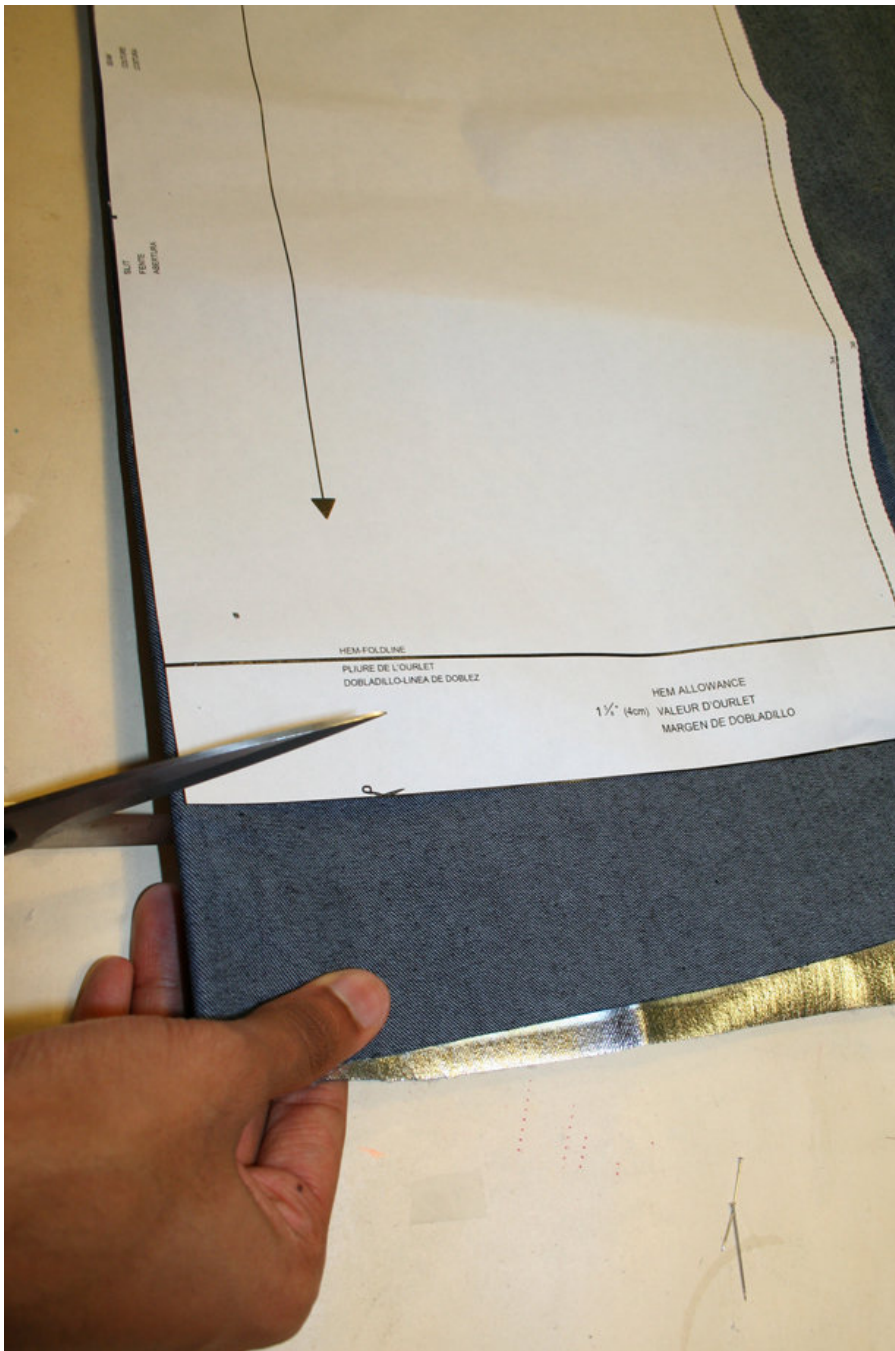
Cut the pattern pieces along the marked lines

To lengthen, slide the two halves of the pattern piece as far apart as necessary.

To shorten, overlap the two halves of the pattern piece as far as necessary. Blend the side edges.

---

### Step 4



## CUTTING OUT

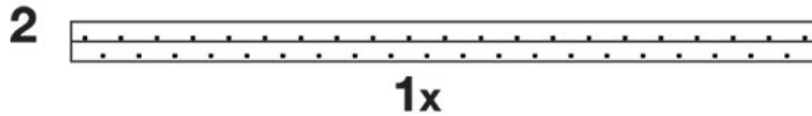
FOLD ( ) means: Cut on the fold, the fold being the center of the pattern piece, but never a cut edge or seam. The piece should be cut double, with the fold line forming the center line. Pattern pieces that are outlined with a broken line in the cutting diagrams are to be placed face down on the fabric. The cutting diagrams on the pattern sheet show how the pattern pieces should be placed on the fabric.

The cutting diagrams show the placement of the pattern on the fabric.

For a single layer of fabric, the pattern pieces are pinned to the right side. For double layers of fabric, the right sides are facing and the pattern pieces are pinned to the wrong side. The pattern pieces that are shown extending over the fold of the fabric in the cutting diagram should be cut last from a single layer of fabric .

## Step 5

### INTERFACING



SEAM AND HEMLINE ALLOWANCES are included on an average:

1 5/8" (4 cm) for hem, 5/8" (1.5 cm) for all edges and stitches. Using BURDA copying paper, transfer the lines and signs of the pattern onto the wrong side of the fabric. Instructions can be found in the packaging.

### Sewing

While sewing, the right sides of the fabric are facing.

Transfer all lines of the pattern onto the right side of the fabric using basting stitches.

### LINING

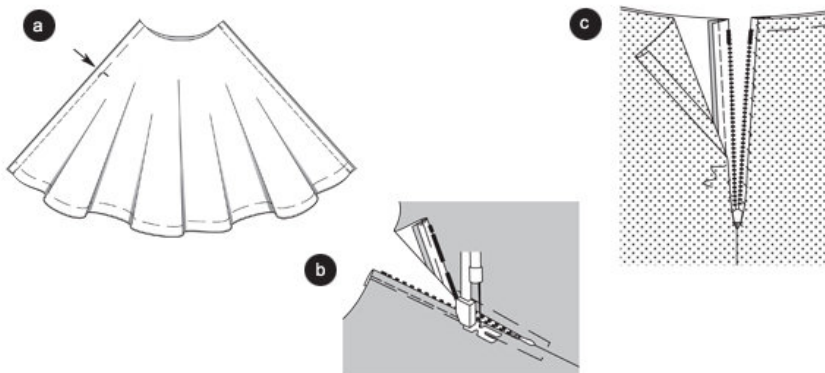
Cut lining according to piece 3.

### INTERFACING

Cut interfacing according to the drawing and iron onto wrong side of fabric.

---

## Step 6



## SKIRT

### Side seams/Slit on left

Place skirt pieces onto each other, right sides facing. Pin side seams. Stitch right side seam. Stitch left side seams from the slit marking downward. Secure seam ends. Leave slits pinned. De-baste seam allowances, finish. Tear basting stitches at slit. (a)

### Zip

Pin zip underneath the slit edges so that the teeth are covered. Stitch zip using zipper foot. (b)

## LINING

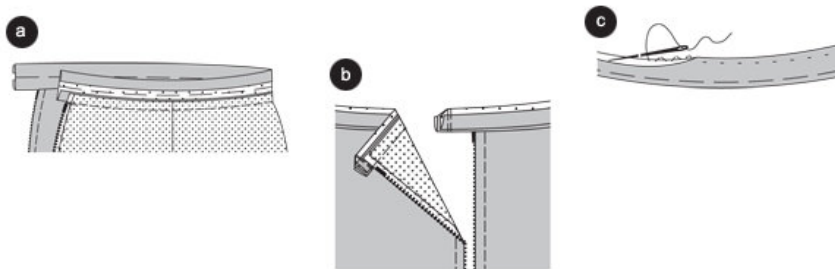
Stitch front and back middle seam. Trim seam allowances; de-baste them held together and iron to side. Stitch side seams as with the skirt pieces.

### Lining the skirt

Pull lining onto the skirt, wrong sides facing. Fold apart and pin upper edges, side seams lying atop each other. Sew lining to skirt at the zipper bands. ©

---

## Step 7



### Waistband

Pin waistband onto the upper skirt edge, letting the underlap overlap at the back skirt piece. Stitch. Secure seam ends. Iron seam allowances into the waistband. Finish the seam allowance of the other long edge. (a)

Fold over waistband at the wrap line, right side inside. Stitch narrow ends onto each other. Trim seam allowances, cut diagonally at edges. Fold over and pin the waistband to the inside at the wrap line, pin to the base seam. Iron. Coming from the right skirt end, stitch all waistband lines neatly, stitching the inner half to the base seam. Add buttonhole to the front waistband edge. Sew button to underlap (b)

### Seam

De-baste seam, fold to the inside and pin. Iron. Stitch seam loosely by hand. ©

Fold and iron the lining seam to the inside. Fold in and stitch neatly, the lining skirt should be 1.5 cm (1/2 inch) shorter than the skirt.

---

**BurdaStyle**

Linda