

Vanessa

By: burdastyle

<http://www.burdastyle.com/projects/vanessa>



Can't decide between fun and playful or a simple straight line? This skirt introduces both: fun pleats on one side with a great pencil shape on the other. Add your personal note with a cool contrasting fabric for the back pleats or a fun trim for the belt.

Materials

Linen, printed twill, crocheted trim, charmeuse for lining

Step 1

burda Download-Pattern
Skirt 6002 - Instructions
 mittel
 semi fitted

burda sizes		55 ins / 140 cm						
		34	36	38	40	42	44	46
	yds	1 1/2	1 1/2	1 1/2	1 1/2	1 1/2	1 1/2	1 1/2
	m	1.25	1.25	1.25	1.25	1.25	1.25	1.25
Contrasting fabric	yds	1/2	1/2	1/2	1/2	1/2	1/2	1/2
	m	0.25	0.25	0.25	0.25	0.25	0.25	0.25
Lining	yds	1/2	1/2	1/2	1/2	1/2	1/2	1/2
	m	0.60	0.60	0.60	0.60	0.60	0.60	0.60

→ with nap

Interfacing
 24" x 16"
 (60 cm x 40 cm)

8" (20 cm)

22 1/2"
 (57 cm)

Baumwollstoffe,
 leichte Jeans-
 stoffe
 Garniturstoff:
 dünne Stoffe

Patternpieces:

- 1 Right front skirt panel 1x
- 2 Left front skirt panel 1x
- 3 Back center skirt panel 1x
- 4 Right back side skirt panel 1x
- 5 Left back side skirt panel 1x
- 6 Pleated skirt panel 2x
- 7 Belt 1x
- 8 Front trimming 1x
- 9 Back trimming 1x
- 10 Front lining skirt panel 1x
- 11 Back lining skirt panel 1x

Fabrics: Cotton, light jeans fabric,
 Combo fabric: light fabric

Step 2



The patterns can be printed out at the copy shop. If you decide to print them at home, follow the instructions: Paper cut for ANSI A (German DIN A4) prints: The patterns are printed out on 28 sheets with a thin frame. Wait until all sheets are printed out. Arrange the sheets so that they fit together (see additional page with the overview of the prints). Fold the single sheets on the upper and right edge along the thin frame lines. Begin with the left lower sheet and then tape the frame lines together precisely.

Step 3



ADJUST PATTERN SIZES

Select your size according to the Burda-dimension table: dresses, blouses, jackets and coats according to the bust size, trousers and skirts according to the hip width. Change the pattern to fit your measurements if they deviate from the Burda-size chart. Cut out the pattern according to your size (a). Refer to our 'Adjust patterns for mixed sizes' technique

LENGTHENING OR SHORTENING THE PATTERN PIECES

Our pattern is calculated for a height of 5â€™ 6â€™ (168 cm). If you are taller or shorter, you can adjust the pattern pieces along the lines marked “lengthen or shorten here”. This way the proper fit is maintained. Always adjust all pattern pieces along the same line to the same degree (b).

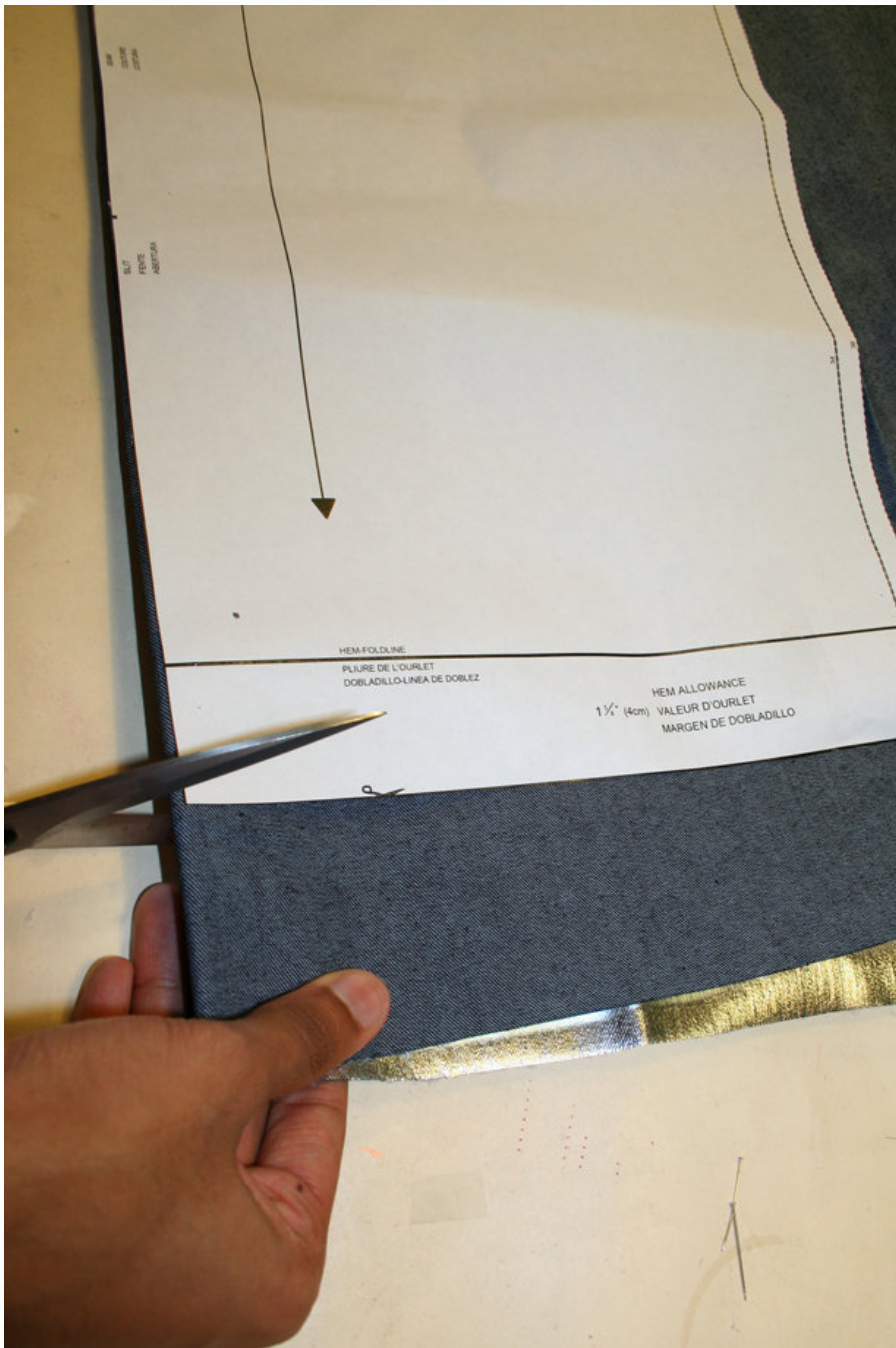
How to lengthen and shorten pattern pieces:

Cut the pattern pieces along the marked lines

To lengthen, slide the two halves of the pattern piece as far apart as necessary.

To shorten, overlap the two halves of the pattern piece as far as necessary. Blend the side edges ©.

Step 4



CUTTING OUT

FOLD () means: Cut on the fold, the fold being the center of the pattern piece, but never a cut edge or seam. The piece should be cut double, with the fold line forming the center line. Pattern pieces that are outlined with a broken line in the cutting diagrams are to be placed face down on the fabric. The cutting diagrams on the pattern sheet show how the pattern pieces should be placed on the fabric (a).

The cutting diagrams show the placement of the pattern on the fabric.

For a single layer of fabric, the pattern pieces are pinned to the right side. For double layers of fabric, the right sides are facing and the pattern pieces are pinned to the wrong side. The pattern pieces that are shown extending over the fold of the fabric in the cutting diagram should be cut last from a single layer of fabric (b).

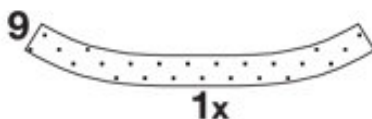
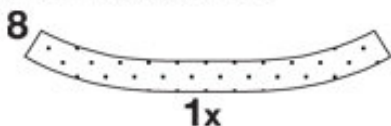
Important: Trim the skirt pattern pieces from the single layer of fabric, the pattern pieces are pinned to the right side of the fabric, the labeled pattern side on top = see cutting diagram

COMBO FABRIC

Pleated pattern piece (Piece 6) needs to be cut twice from the combo fabric. = See cutting diagram

Step 5

INTERFACING



SEAM AND HEMLINE ALLOWANCES are included on an average:

5/8" (1.5 cm) for all edges and stitches. Using BURDA copying paper, transfer the lines and signs of the pattern onto the wrong side of the fabric. Instructions can be found in the packaging.

LINING: Cut lining according to pattern pieces 10 and 11 = see cutting diagram

Interfacing

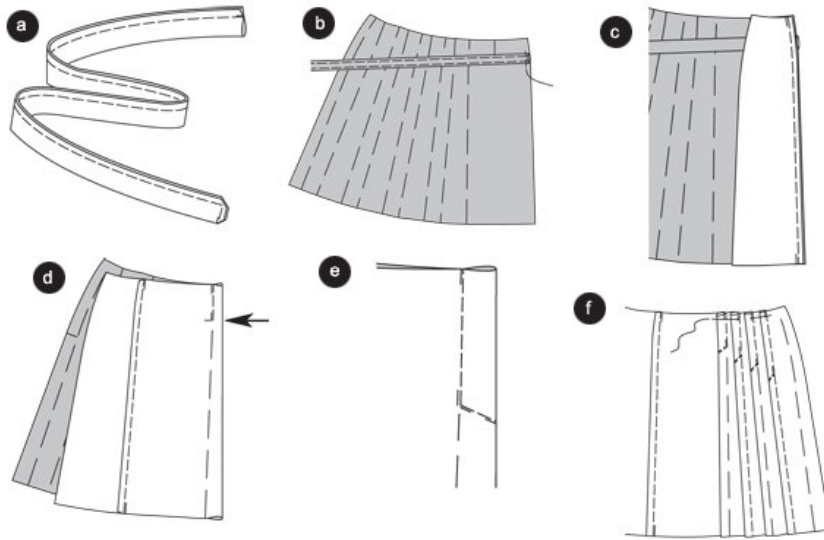
Cut interfacing according to the drawing and press onto the left fabric side

Sewing

While sewing, the right sides of the fabric are facing.

Transfer all lines of the pattern onto the right side of the fabric using basting stitches.

Step 6



Belt

Fold the belt along the FOLD LINE, belt fabric inside out. Pin and stitch edges on top of each other according to drawing. Trim allowances, cut corners diagonally. Turn belt. Baste edges, press and stitch narrowly. Baste

open belt end between the cross lines of the right front skirt panel (1a). At the other belt end, approximately 3/4" (1.5 cm) next to the edge; incorporate a button hole. (a)

Front dividing seam

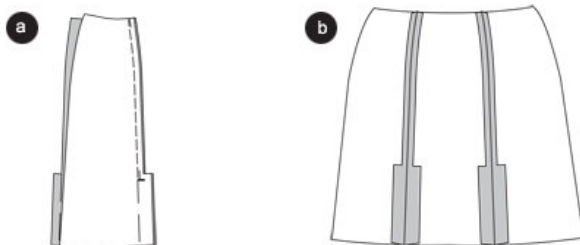
Position front skirt panels facing right to the right, baste dividing seam (seam 1) and stitch, doing so enclose the belt between the panels. Trim allowances, neaten altogether and press inwards into the left front panel.

(b)

Front skirt panel / pleats

Fold the right front skirt panel in such a way as to make the lines indicated by an arrow in the drawing meet, the right fabrics sides inside. Baste lines from the top to bottom one on top of the other. ©

Step 7



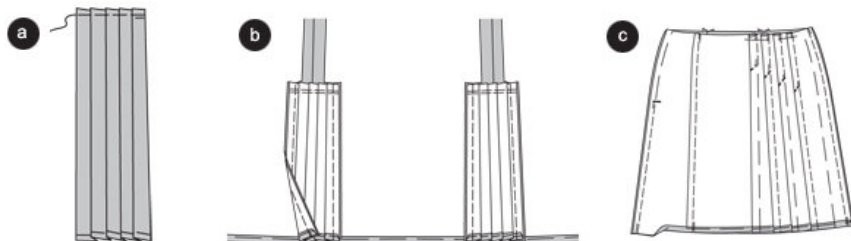
Back princess seams

Position back side skirt panels onto the back center skirt panel facing right to the right, baste dividing seams from the top to bottom (seam 2), stitch from the top downwards to the slit mark. Secure seam ends. (a)

Neaten allowances and trimmings, Fold and press apart (b). Open basting stitches from the pleats and slit.

Fold inwards and baste the seam of the back skirt panels and the pleated piece, press. Stitch seam of the pleated piece 3/8" (1 cm) from the edge.

Step 8



Pleated pieces

Neaten edges. Paste pleat lines using basting stitches to the right fabric side.

Pin the lines connected through an arrow and drawn on the right side of the fabric, one on top of the other, Press. Stitch pleats at the top edge. (a)

Pin pleated piece onto facing of the slit right to the right. Stitch side edges on top of the other. Stitch top edges one on top of the other, beginning in the center of the edges. (b)

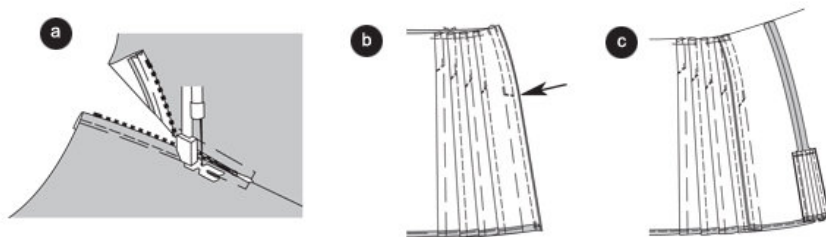
Side seams / left slit

Fold the seam of the left back skirt panel back to the outside. Neaten seam of the right front skirt panel, turn inwards, baste.

Position the front skirt panel onto the back skirt panel facing right to the right. Baste side seams. Stitch right side seam (seam 3). Stitch left side seam from the slit mark downwards to the bottom (seam 4). Secure seam ends.

Leave slit basted. Trim the allowances of the right side seam and neaten altogether. Neaten the allowances along the left side seams and press apart. ©

Step 9



Zipper

Open Basting stitches from the slit.

Baste the zipper under the slit edges in such a way as to assure that the little teeth are covered. Stitch zipper using the zipper tootsies. (a)

Neaten remaining seam, baste inwards, press. Stitch seam. Stitch seam 1/2" wide from the edge.

Pleat / right side seam

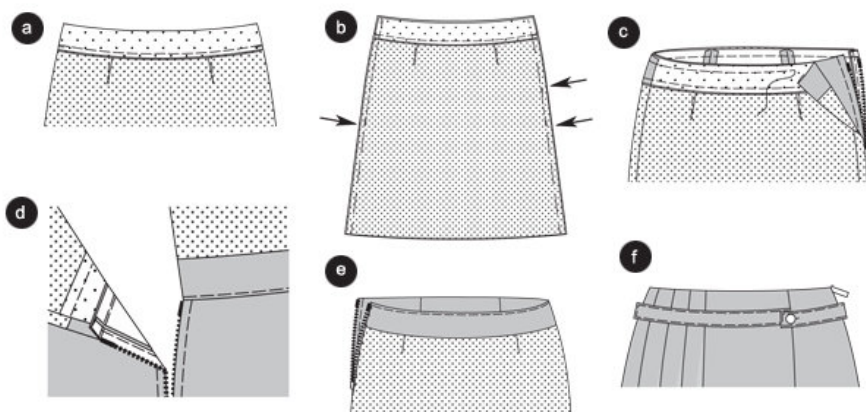
Position front skirt panel onto the back skirt panel facing right to the right, baste pleat lines from the top to the bottom one on top of the other, and stitch from the top to the arrow in the drawing. Secure seam ends.

Stitch pleat depth diagonally one on top of the other (b). Apply and press pleat depth to the front skirt panel, baste the top ©

Lining skirt

Baste darts of the front and back skirt panel and stitch peaked. Press darts towards the front and back center.

Step 10



Waistband

Baste waistband onto the front lining skirt panel (seam 5) facing right to the right. Trim allowances, neaten altogether and press inwards into the lining. Then stitch waistband onto the back lining skirt panel. (a)

Side seams / slits

Position front skirt panel onto the back skirt panel facing right to the right, baste side seams (seam 6). Stitch seams, at the same time leaving the slit open and do the same with the left side seam (like the skirt) the slit for the zipper (arrows). Secure the seam ends. Trim the seam ends. Neaten the allowances and press apart. Open the basting stitches from the slit. (b)

Lining the skirt

Pin the waistband of the onto the top skirt edge facing right to the right; Side seams meet. Stitch. Trim allowances and press inwards into the waistband ©. Stitch the waistband narrowly along the seam, also stitch the allowances (d). Baste the waistband and in the same step the lining inwards, press. Stitch slit edges onto the zipper bands (e)

Apply BUTTON onto the dividing seam. Button up the belt. (f)

BurdaStyle

Vanessa