

07/2010 Three quarter sleeve blouse

By: burda style magazine

<http://www.burdastyle.com/projects/072010-three-quarter-sleeve-blouse>

Three quarter sleeve blouse burda style magazine patterns FAQ

Materials

linen

Step 1 — Preparation

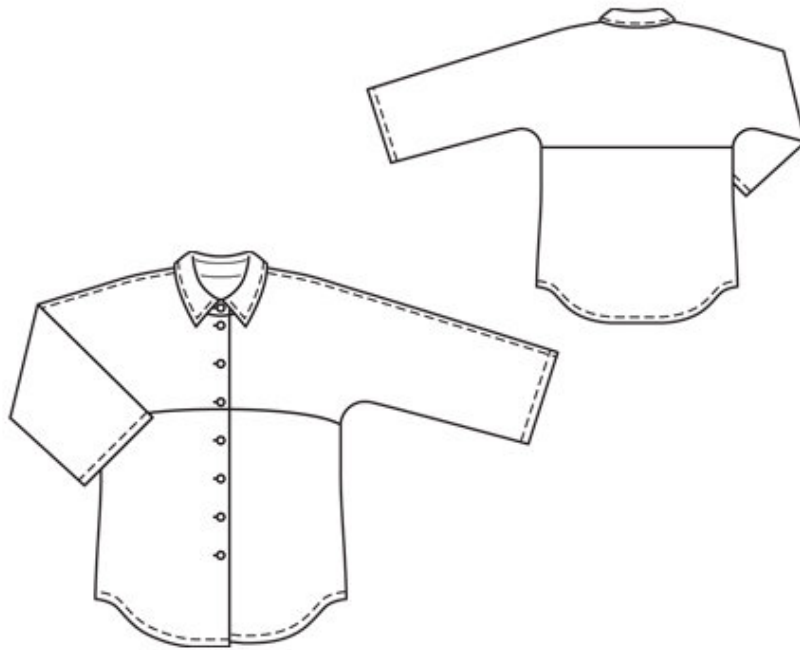
Trace the pattern pieces from the pattern sheet.

The buttonholes on pieces 3 and 5 are marked for size 36. For sizes 38 — 44, mark the top buttonhole on piece 3 the same distance from neck edge as for size 36. The bottom buttonhole is in the same place for all sizes. Centre the other buttonhole in between. Lay pieces 3 and 5 together. Measure spacing between buttonholes on piece 3 and mark buttonholes on piece 5 with the same spacing.

Seam and hem allowances:

Seams and edges 1.5 cm (5/8 in), hem and sleeve hems 2 cm (3/4 in).

Step 2 — Cutting out



3 upper front with integrated sleeve 2x
4 upper back with integrated sleeve, on a fold 1x
5 lower front 2x
6 lower back, on a fold 1x
7 collar, on a fold 2x
8 collar band, on a fold 2x
Interfacing: See pattern layout.

Step 3 — Front and back

Stitch horizontal section seams on front and back pieces. Press allowances up. Topstitch close to seams.

Step 4 — Shoulder and sleeves

Sew shoulder seams and top sleeve seams as flat-felled seams: Stitch seam. Press allowances forward. Trim lower allowance to 5 mm (3/16 in) wide. Turn in upper allowance and baste. Stitch from right side of fabric, 7 mm (1/4 in) from seam.

Step 5 — Side seams

Stitch side seams and underneath sleeve seams as continuous seams. Trim allowances to 7 mm (1/4 in) wide, neaten together, and press onto back.

Step 6 — Hem allowance

Lay hem allowances and sleeve hem allowances to inside, turn half in, press, and stitch.

Step 7 — Self-facings

Press front self-facings to inside and sew to hem edge.

Step 8 — Collar with collar band

Stitch collar pieces right sides together along outer edges. Turn collar right side out and press. Topstitch edges of collar. Lay collar band pieces right sides together, catching collar in between. Stitch along front and upper edge of collar band, beginning and ending in front, exactly on seam line of joining edge. Turn collar band right side out. Stitch outer collar band piece to neck edge. Press seam allowances onto collar band. Turn in inside collar band piece and baste over joining seam. Topstitch collar band close to all edges.

Step 9 — Buttonholes

Work buttonholes in right front and in right end of collar.

BurdaStyle

07/2010 Three quarter sleeve blouse