

6/2010 Tunic top with bat sleeves

By: burda style magazine

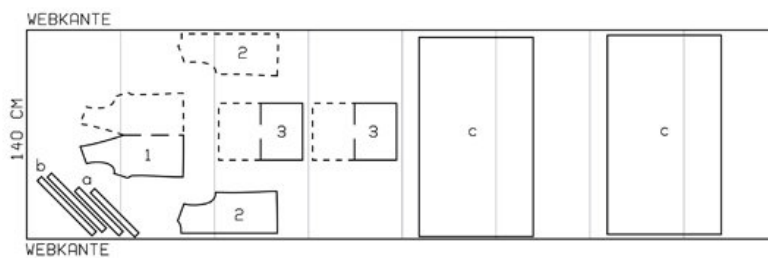
<http://www.burdastyle.com/projects/62010-tunic-top-with-bat-sleeve>

Tunic top with bat sleeves burda style magazine patterns FAQ

Materials

Batiste with a pattern repeat of 63 cm (23 3/4 ins)

Step 1 — Preparation



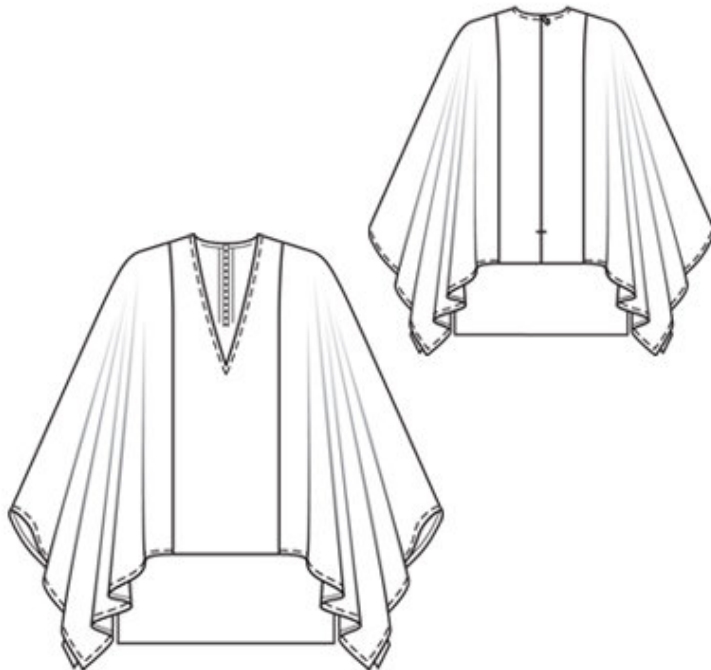
110 72-88

Trace the pattern pieces from the pattern sheet.

Seam and hem allowances:

Seams and edges 1.5 cm (5/8 in).

Step 2 — Cutting Out



1 front, on a fold 1x

2 back 2x

3 hem band, on a fold 2x

a) 2 bias strips for neck edge, 40 — 40 — 41 — 42 — 42 cm (15 3/4 — 15 3/4 — 16 1/4 — 16 1/2 — 16 1/2 ins) long, 4 cm (1 5/8 ins) wide (incl. allowance),

b) 2 bias strips for armholes, 46 — 48 — 49 — 51 — 52 cm (18 1/8 — 19 — 19 1/4 — 20 1/4 — 20 1/2 ins) long, 4 cm (1 5/8 ins) wide (incl. allowance),

c) 2 sleeves. 127 — 128.5 — 130 — 132 — 133.5 cm (50 — 50 5/8 — 51 1/4 — 52 — 52 5/8 ins) wide and 74 — 75 — 76 — 76 — 77 cm (29 1/4 — 29 3/4 — 30 — 30 — 30 1/2 ins) long.

Vilene Bias Tape: Iron onto neck and armhole edges.

Step 3 — Bust Darts and Shoulder Seams

Stitch bust darts. Press darts down. Stitch shoulder seams. Trim seam allowances to 7 mm (1/4 in) wide, neaten together and press onto back.

Step 4 — Neck edge

Fold bias strips in half lengthwise and press, right side facing out. Pin doubled bias strips to neck edge so that that fold edge of strip lies on garment piece, 1 cm (3/8 in) past seam line — begin at point of V-neck and leave end of each bias strip extending by about 2 cm (3/4 in). Pin extending ends together diagonally and stitch (just to marked neck edge). Press seam allowances open and trim to 3 mm (1/8 in) wide. Stitch strips to

neck edge. Trim seam allowances and clip into point of neck edge. Turn strips to inside and press edge. Topstitch 7 mm (1/4 in) from neck edge.

Step 5 — Zipper

Sew invisible zip to back opening edges. Leave ends of zip tapes extending at the top. Stitch centre back seam from lower edge to zip. Turn in top ends of zip tapes and sew in place.

Step 6 — Armholes and side seams

Fold bias strips in half lengthwise and press, right side facing out. Stitch doubled bias strips to armhole edges so that fold edge of each strip lies on garment piece, 1 cm (3/8 in) past seam line. Trim seam allowances. Turn bias strips to inside and press edges. Stitch side seams, laying bias strips up and stitching ends of bias strips together. Press seam allowances open. Lay bias strips to inside again. Topstitch close to armhole edges.

Step 7 — Hem Band

Stitch side seams of hem band. Stitch band to lower front and back edge. Press seam allowances onto hem band. Fold band on fold line, wrong side facing in, and press. Lay inside edge of hem band flat over joining seam. Stitch from right side of garment, along line of seam, thereby catching inside edge of hem band.

BurdaStyle

6/2010 Tunic top with bat sleeves