

# 5/2011 Drawstring Pants

By: burda style magazine

<http://www.burdastyle.com/projects/52011-drawstring-pants>

---



Drawstring Pants burda style magazine patterns FAQ

## Materials

Lengthwise striped seersucker with widthwise stretch

---

## Step 1 — Preparation

Trace pattern pieces from the pattern sheet. Trace the pocket piece from piece 2, to the abutting line.

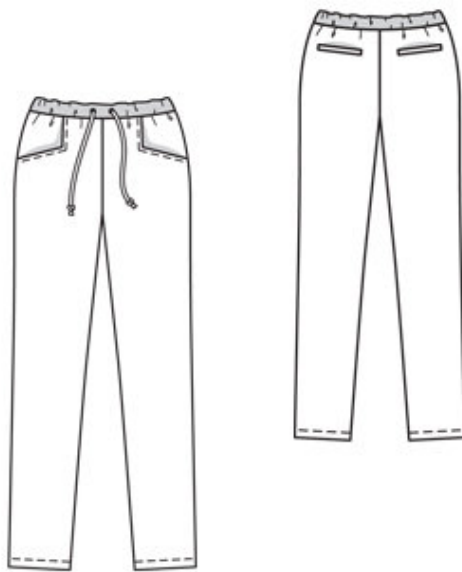
Lengthen piece 3 as indicated.

Seam and hem allowances:

Seams and edges 1.5 cm (5/8 in), hem 3 cm (1 1/4 ins).

---

## Step 2 — Cutting Out



Seersucker:

1 front trouser piece 2x

2 side hip yoke with

â— integrated pocket piece 2x

â— pocket piece 2x

3 back trouser piece 2x

a) 2 welt strips (back pockets), 15 cm (6 ins) long, 4 cm (1 5/8 ins) wide (incl. allowances),

b) 4 pocket pieces (back pockets), 15 cm (6 ins) wide, 13 cm (5 1/4 ins) long (incl. allowances).

Rib knit:

2 waistband pieces, 35 â— 37 â— 39 â— 41 â— 43 â— 45 cm (13 3/4 â— 14 1/2 â— 15 1/2 â— 16 1/4 â— 17 â— 17 3/4 ins) long, 5 cm (2 ins) wide, finished width 2.5 cm (1 in).

Interfacing: Iron to welt strips. Iron strips of interfacing, approx. 3 cm (1 1/4 ins) wide, to wrong side of back trouser pieces, over pocket markings.

---

### **Step 3 — Construct single welt pockets on back trouser pieces**

Mark an abutting line for welt, 1.2 cm (1/2 in) from welt joining line (= finished width of welt). Fold welt strips lengthwise, right side facing out, and press. Baste each folded welt along join-ing line so that fold edge of welt meets abutting line and open lengthwise edges lie between pocket lines. Stitch welts in place along welt joining lines. Stitch one pocket piece to each pocket piece joining line. Slash between lines of stitching and clip diagonally toward ends of seams, not cutting welts or pocket pieces. Turn welts toward pocket openings and pull pocket pieces to inside. Stitch remaining pocket pieces to seam allowances of welt joining seams. Fold small fabric triangles at pocket opening ends to inside and stitch to welt and pocket pieces, from seam end to seam end. Trim pocket pieces even and stitch together.

---

### **Step 4 — Hip yoke pockets**

Stitch pocket pieces right sides together with pocket opening edges of front trouser pieces. Clip seam allowances diagonally into corners. Turn pocket pieces to inside. Press edges. Topstitch 7 mm (1/4 in) from pocket opening edges. Pin pocket opening edges to side hip yokes at abutting lines. Stitch pocket pieces together. Baste pocket pieces to wrong side of front trouser pieces.

---

### **Step 5 — Stitch side seams and inside leg seams**

Stitch side seams and inside leg seams. Pull one trouser leg over the other, with right sides facing. Stitch centre front and back seam as continuous seam. Press seam open, from upper edge to beginning of curve. Do not press seam allowances flat on curve.

---

### **Step 6 — Stitch side seams of waistband**

Stitch side seams of waistband, leaving one seam open on inner half of waistband, to insert elastic. Fold waistband in half lengthwise, right side facing out, and press fold edge. Unfold waistband again. Mark centre front of waistband. Insert eyelets in outer half of waistband, 1.5 cm (5/8 in) to each side of centre front, catching small pieces of interfaced fabric on the inside, for reinforcement. Fold waistband in half again. Fold petersham ribbon in half lengthwise and edgestitch edges together. Lay ribbon inside waistband and pass ends out through eyelets. Knot ends of ribbon. Stitch edges of waistband together to upper edge of trousers, stretched to fit. Neaten seam allowances. Press allowances down. Topstitch trousers close to waistband join-ing seam. Pull elastic into waistband and sew ends together to a circumference of 70 — 74 — 78 — 82 — 86 — 90 cm (273/4 — 291/4 — 303/4 — 321/2 — 34 — 351/2 ins).

---

### **Step 7 — Hem**

Press hem allowances to inside, turn in to 1.5 cm (5/8 in) wide, and stitch in place.

---

**BurdaStyle**

5/2011 Drawstring Pants