

10/2011 Knee-length A-line skirt

By: burda style magazine

<http://www.burdastyle.com/projects/102011-knee-length-a-line-skirt>



10/2011 Knee-length A-line skirt burda style magazine patterns FAQ

Materials

Gabardine

Step 1 — Preparation



Paper cut for ANSI A (German DIN A4) prints:

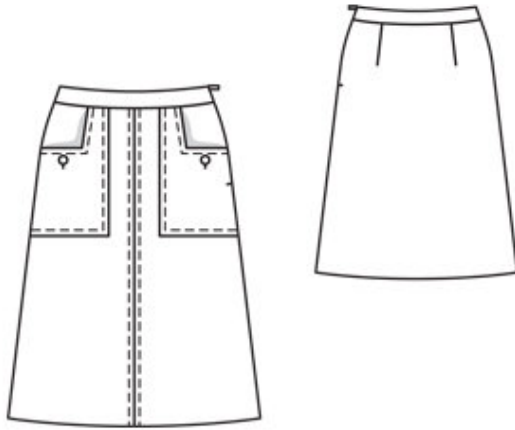
This pattern is printed on 8.5 × 11 sheets of plain paper. Do not scale or center pages before printing. Wait until all sheets are printed out before beginning to tape them together. **Do not cut out pattern pieces yet**— Arrange the sheets on a large, hard, flat surface so that they fit together, matching up like numbers and letters (i.e. 6A to 6A). To tape pattern together, fold under the margin of one piece (6A) and tape right against the line of it's matching number/letter (6A).

burda style magazine pattern do not have seam allowance included.

Seam and hem allowances to be added: Seams and edges 1.5 cm (5/8 in).

see example here: <http://www.burdastyle.com/projects/072011-jumpsuit/instructions/1>

Step 2 — Cutting out



21front skirt panel 2x

22pocket 4x

23back skirt panel, on a fold 1x

24front waistband, on a fold 2x

25back waistband, on a fold 2x

Interfacing: Iron to wrong side of outer waistband pieces.

Step 3 — Seam allowances

Stitch centre front seam. Press seam allowances open. Topstitch 1 cm (3/8 in) to each side of seam. Stitch front and back darts. Press toward centres.

Step 4 — Patch pockets

For each pocket, stitch two pieces together, right sides facing, leaving side and upper edges open. Trim seam allowances and clip into corners. Turn pockets right side out and press. Topstitch 1 cm (3/8 in) from pocket opening edges. Work buttonhole as marked. Pin pockets to front skirt panel at abutting lines. Stitch 1 cm (3/8 in) from front and lower pocket edges to attach. Baste upper and side edges in place.

Step 5 — Waistband

Stitch right side seam. Stitch right side seam on each waistband unit, stitching inside waistband as mirror image. Press seam allowances open.

Step 6 — Waistband

Stitch outer waistband to upper skirt edge. Press seam allowances of joining seam onto waistband.

Step 7 — Zip

Sew invisible zip to edges of outer waistband and to left slit edges. Stitch left side seam from lower edge to zip opening.

Step 8 — Waistband

Lay inside waistband unit right sides together with attached outer waistband unit. Pin upper edges together. At zip opening, turn ends of inside waistband piece back, 5 mm (3/16 in) before edge of opening, and pin to upper edge. Turn allowances on opening edges of outer waistband to outside and pin to upper edge, over inside waistband pieces. Stitch along upper edge. Turn allowances on opening edges to inside. Turn inside waistband piece up and stitch to seam allowances, as far as possible, close to seam. Turn inside waistband piece to inside, baste over joining seam, and sew to zip tapes. Work from outside of skirt to stitch along line of joining seam, catching inside edge of waistband.

Step 9 — Hem

Press hem allowance to inside and sew in place by hand.

BurdaStyle

10/2011 Knee-length A-line skirt