

## 02/2012 Tunic Dress

By: burda style magazine

<http://www.burdastyle.com/projects/022012-tunic-dress>

---



Tunic Dress Pattern also contains lines and markings for a tunic top. burda style magazine patterns FAQ

### Materials

Silk crepe, 135 cm (53 ins) wide: 1.70 m (1 7/8 yds). 1 invisible zip, 22 cm (9 ins) long, and a special presser foot. Recommended fabrics: Softly draping fabrics with some body, with or without elastane.

---

## Step 1 — Preparations



Paper cut for ANSI A (German DIN A4) prints:

This pattern is printed on 8.5 × 11 sheets of plain paper. Do not scale or center pages before printing. Wait until all sheets are printed out before beginning to tape them together. **Do not cut out pattern pieces yet**— Arrange the sheets on a large, hard, flat surface so that they fit together, matching up like numbers and letters (i.e. 6A to 6A). To tape pattern together, fold under the margin of one piece (6A) and tape right against the line of it's matching number/letter (6A).

Trace the pattern pieces from the pattern sheet. Follow lines and details for views B (This pattern also includes pieces, lines and markings for style A and C)

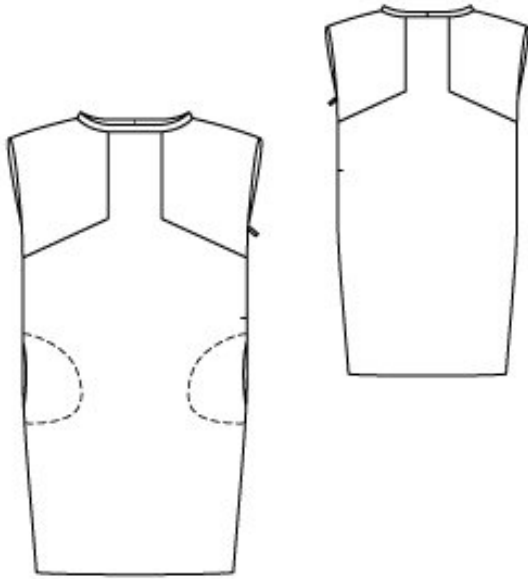
Trace the pocket piece from piece 21 as a separate pattern piece it is the same for all sizes.

**burda style magazine pattern do not have seam allowance included.**

Seam and hem allowances to be added: Seams and edges 1.5 cm (5/8 in), armhole edges 2 cm (3/4 in), hem 4 cm (1 5/8 ins).

---

## Step 2 — Cutting out



21 front piece, cut on a fold 1x  
pocket piece, cut 4x  
22 side front, cut 2x  
23 back, on a fold, cut 1x  
24 side back 2x

Also draft and cut the following pieces, not on the pattern sheet:

a) neck band, cut on bias:

Size 38: 61.5 × 3 cm (24 1/4 × 1 1/4 ins)

Size 40: 63 × 3 cm (24 3/4 × 1 1/4 ins)

Size 42: 64.5 × 3 cm (25 1/2 × 1 1/4 ins)

Size 44: 66 × 3 cm (26 × 1 1/4 ins)

Size 46: 68 × 3 cm (26 3/4 in x 1 1/4 ins)

(finished width 1.5 cm (5/8 in))

---

### Step 3 — Sewing

Front and back section and shoulder seams:

Lay the side front pieces right sides together with the front piece. Line up, pin and sew the sections seams, side front pieces to front piece, from upper edge to the corner. Clip allowances of front into the corner. Then stitch the side fronts to the front piece, from the corner to side seam edge. Press the seam allowances open. Stitch side back pieces to back, clipping allowances of back into corners. Press seam allowances open

Stitch shoulder seams, beginning and ending each exactly on marked neck edge.

Neck band:

Stitch ends of neck band together (= centre back seam). Stitch outer half of band to the neck edge of garment. Fold band in half to inside, fold the inside edge under, and tack in place. Work from the right side of the garment to stitch along the line of joining seam, catching the edge of band on the back side.

Side seams and zipper:

Lay the front piece right sides together with back piece. Stitch right side seam below seam mark (seam number 4), not stitching across pocket opening.

Sew invisible zip to left side slit edges, from armhole, see the Helpful Hint on page 10. Turn in top ends of zip tapes and sew in place. Stitch left side seam below zip, not stitching pocket opening closed.

Inseam pockets:

Stitch pocket pieces right sides together with seam allowances of pocket opening edges. On pocket opening edge, stitch along seam line and above and below pocket, stitch close to side seam. Press pocket pieces forward. Baste pockets to wrong side of front. To stitch pockets in place, pin the paper pattern piece to the front and stitch along its edge.

Press the seam allowances on armhole edges to inside and sew in place by hand. Press the hem allowance to inside and sew in place by hand.

---

**BurdaStyle**

02/2012 Tunic Dress