

burda style magazine 01/2010 Mao Collar Blouse

By: burda style magazine

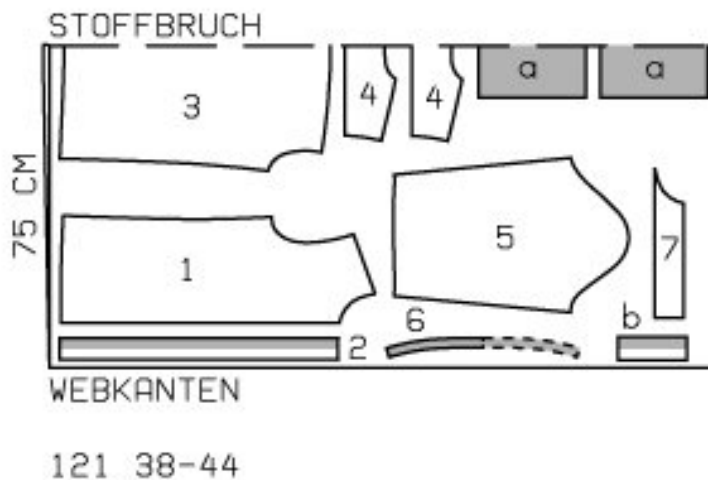
<http://www.burdastyle.com/projects/burda-style-magazine-012010-1>

Mao Collar Blouse For more information on this and other burda style magazine patterns, please see this dedicated blog post.

Materials

poplin shirting with lengthwise stripes

Step 1 — Preparation



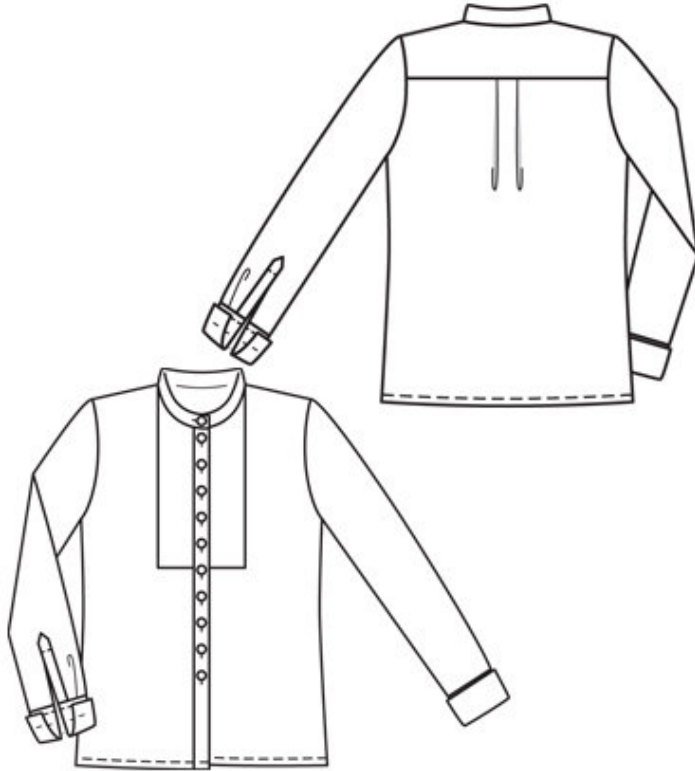
Trace the pattern pieces from the pattern sheet. Follow lines and details for style 121.

The buttonholes marked on piece 2 are for size 38. For sizes 40 — 44, mark the top buttonhole the same distance from upper edge as for size 38. The bottom buttonhole is in the same place for all sizes. Space the other buttonholes evenly in between.

Seam and hem allowances:

Seams and edges 1.5 cm (5/8 in), hem 2 cm (3/4 in).

Step 2 — Cutting out



- 1 front x2
- 2 front button band x2
- 3 back, on a fold x1
- 4 back yoke, on a fold x2
- 5 sleeve x2
- 6 standing collar, on a fold x2
- 7 front â— dickeyâ— x2

a) 2 cuffs, 25 â— 25.5 â— 26 â— 26.5 cm (10 â— 10¹/₈ â— 10¹/₄ â— 10¹/₂ ins) long, 24 cm (9¹/₂ ins) wide, finished width 12 cm (4³/₄ ins), turned up 6 cm (2³/₈ ins),

b) 2 sleeve vent bands, 16 cm (6³/₈ ins) long, 5.5 cm (2¹/₄ ins) wide, finished width 2.7 cm (1¹/₈ ins).

Interfacing: See pattern layout. Interface only the outer halves of the cuffs.

Step 3 — "Dickey"

On each front â— dickeyâ— (piece 7), press allowances on side and lower edges to inside. Lay each â— dickeyâ— on front at placement lines. Edgestitch pressed edges in place and baste remaining edges in place.

Step 4 — Bands

Stitch front button bands to vertical edges of fronts. Press allowances of band joining seams and of other long edges of button bands onto bands.

Step 5 — Pleats

Fold pleats in upper back edge in arrow direction and baste.

Step 6 — Yoke

Pin one yoke piece to right side of upper edge of back piece and pin second yoke to wrong side (right sides of yoke pieces are facing). Stitch yoke pieces in place and press up. Topstitch yoke close to seam. Stitch outer yoke to upper edges of fronts. Press seam allowances onto yoke. Turn in inside yoke and baste to joining seam. Work from right side to edge, stitch yoke in place. Baste open edges of yoke together.

Step 7 — Side Seams

Stitch side seams. Lay hem allowance to inside and turn half in. Press hem and stitch.

Step 8 — Bands

Fold button bands to inside on fold line. Baste inside edges of bands in place. Topstitch bands close to joining seam.

Step 9 — Standing collar

Lay collar pieces right sides together. Stitch together along front and upper edges, beginning and ending stitching in front, exactly at seam line on joining edge. Trim seam allowances. Turn collar right side out and press. Stitch outer collar piece to neck edge. Turn in inside collar piece and baste to joining seam. Topstitch collar close to all edges.

Step 10 — Sleeve Vents

Construct sleeve vents on right and left sleeves as mirror images: Slash vent open. The cut edge closest to sleeve seam line will become the underlap. Clip about 5 mm (3/16 in) diagonally upward into underlap edge, above top of sleeve vent. Turn underlap edge twice under as narrowly as possible and stitch in place. Fold sleeve vent band lengthwise, right side facing in. Stitch edges at top end as marked on sleeve, then stitch lengthwise edges together a further 2.3 cm (7/8 in) long (marking on sleeve). Trim seam allowances and clip at end of seam. Turn band right side out. Stitch outer half of band right sides together with sleeve, along joining line. Clip sleeve toward end of seam. Fold small triangle of fabric at end of clip to right fabric side. Lay band over vent. Turn in inside half of band, lay over joining seam, and baste. Topstitch band close to fold edge and close to joining seam. Edgestitch top end of sleeve vent band in place and stitch across band at end of vent.

Step 11 — Sleeve pleats

Fold pleats in lower edges of sleeves and baste. Stitch sleeve seams.

Step 12 — Cuffs

Topstitch cuffs close to joining seam and 1.5 cm (5/8 in) from seam. Work 2 buttonholes each in both ends of cuffs — 3 cm (1 1/4 ins) and 9 cm (3 5/8 ins) below joining seam. Fold lower edges of cuffs up, 6 cm (2 3/8 ins) wide, and press. To fasten cuffs, join 2 buttons each with a thread bar and button into buttonholes.

Step 13 — Sleeves

Set in sleeves.

Step 14 — Buttonholes

Work buttonholes in right front band and in right end of collar.

BurdaStyle

burda style magazine 01/2010 Mao Collar Blouse