

Bolero Jacket 04/2012

By: burda style magazine

<http://www.burdastyle.com/projects/bolero-jacket-042012>

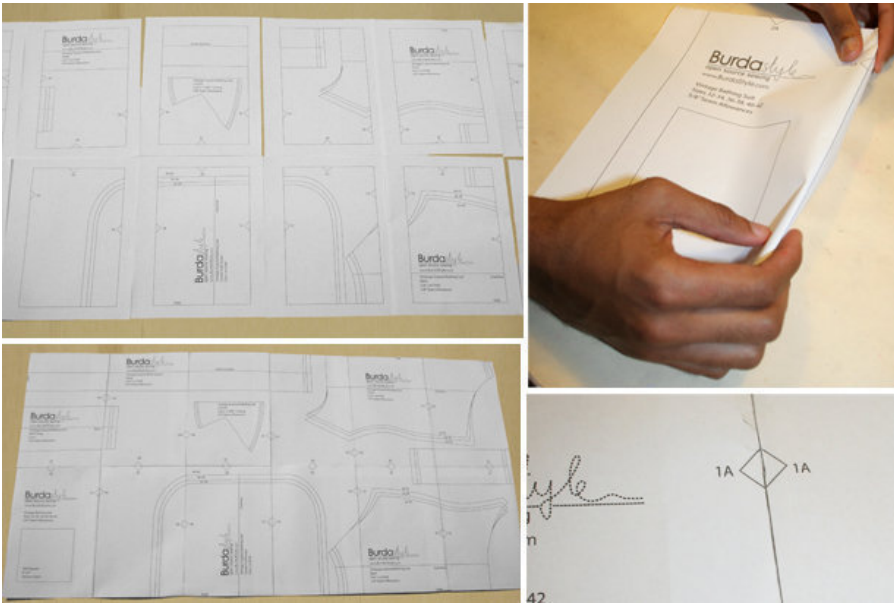


Bolero jacket sewing pattern.

Materials

Fine gabardine, width: 150 cm (59 ins) length: 1.30 m (1 1/2 yds). Lining, width: 140 cm (55 ins) length:
Size 17 – 19: 0.90 (1yd) Size 20, 21: 1.10 m (1 1/4 yds). Vilene/Pellon G 785. Vilene Bias Tape/stay tape.

Step 1 — Preparations



Paper cut for ANSI A (German DIN A4) prints:

This pattern is printed on 8.5 × 11 sheets of plain paper. Do not scale or center pages before printing. Wait until all sheets are printed out before beginning to tape them together. **Do not cut out pattern pieces yet**— Arrange the sheets on a large, hard, flat surface so that they fit together, matching up like numbers and letters (i.e. 6A to 6A). To tape pattern together, fold under the margin of one piece (6A) and tape right against the line of it's matching number/letter (6A).

Trace the pattern pieces from the pattern sheet following the lines and markings for the correct size and style (124). This pattern can also be used to make 124, a sleeveless bolero.

Trace the back hem facing from piece 3 as a separate pattern piece.

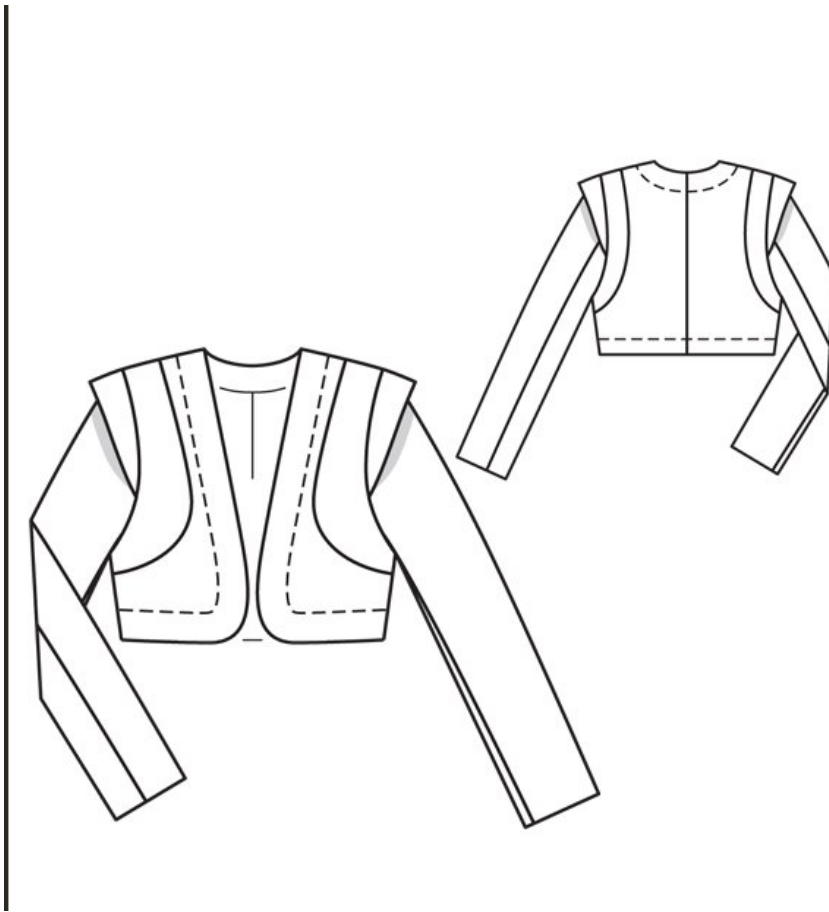
For the back lining, tape pieces 3 and 4 together as far as possible, beginning at lower edge. This creates a small shoulder dart at the top. See pattern layout. Lay back facing (piece 6) on back lining piece and mark the lining line along inside edge of facing. Trim the paper pattern piece to the lining line.

burda style magazine pattern do not have seam allowance included.

Seams and edges 1.5 cm (5/8 in), curved seams 1 cm (3/8 in), sleeve hems 4 cm (1 5/8 ins). Cut lining pieces with 1.5 cm (5/8 in) seam and hem allowances.

Step 2 — Cutting out

Step 3 — Sewing



Stitch the centre back seam. Press the seam allowances open. Stitch the side front pieces to the front pieces and the side back pieces to the back pieces. Press the seam allowances onto the side pieces. Stitch shoulder seams on jacket and facing. Press seam allowances open.

Outer edges, Pin the facing right sides together with the fronts and back. Stitch along the front hem edges, front edges, and neck edge. Trim the seam allowances. Lay facing on seam allowance and stitch to seam allowance, close to seam. Turn facing to inside, press edges. Stitch the back hem facing right sides together with the back hem edge. Turn the facing down and stitch to seam allowances, close to seam. Turn facing to inside and press edge.

Armhole bands: Lay each interfaced band piece on band piece with no interfacing, right sides together. Stitch together on the (shorter) outer edge. Trim seam allowances. Turn bands right side out and press edges. Baste band edges together to armhole edges, from seam number 6 to seam number 7. Stitch bands in place.

Stitch side seams, turning facings down again. Turn facings to inside.

Stitch sleeve seams. Press sleeve hem allowances to inside and sew in place by hand.

Set in sleeves, easing sleeve caps and catching in armhole bands.

Sew the lining: On lining backs, stitch the seam allowances of the centre seam together, 1 cm (3/8 in) from the edge. For the ease pleat, stitch along centre back at top and bottom, each approx. 5 cm (2 ins) long, and

baste in between. Press the pleat to one side. Stitch darts and seams of lining. Set in sleeve linings.

Stitch lining to inside facing edge, above marking. Lay lining inside jacket, with wrong sides facing, pulling linings into sleeves.

Topstitch 3 cm (1 1/4 ins) from all jacket edges, not catching the lining.

Above hem facing, pin a fold, approx. 1 cm (3/8 in) deep, in lining. Turn lining edge under and sew to hem facing by hand. Remove pins, lay extra length of lining down, and press. Sew remaining front lining edges to facing. Above each sleeve hem, pin a fold, approx. 1 cm (3/8 in) deep, in lining. Turn edge of sleeve lining under and sew to hem allowance. Turn extra length of lining down and press lightly.

BurdaStyle

Bolero Jacket 04/2012