

Ruched Sheath Dress 05/2012

By: burda style magazine

<http://www.burdastyle.com/projects/ruched-sheath-dress-052012>



Ruched sheath dress sewing pattern. This form fitting dress is both stylish and comfortable, made in a soft stretch jersey for best flexibility.

Materials

Fine stretch jersey, 150 cm (59 ins) wide: 3.20 m (3 1/2 yds) for all sizes. Vilene/Pellon G 785. Vilene Bias Tape/stay tape. A twin sewing machine needle.

Step 1 — Preparations



Paper cut for ANSI A (German DIN A4) prints:

This pattern is printed on 8.5 × 11 sheets of plain paper. Do not scale or center pages before printing. Wait until all sheets are printed out before beginning to tape them together. **Do not cut out pattern pieces yet**— Arrange the sheets on a large, hard, flat surface so that they fit together, matching up like numbers and letters (i.e. 6A to 6A). To tape pattern together, fold under the margin of one piece (6A) and tape right against the line of it's matching number/letter (6A).

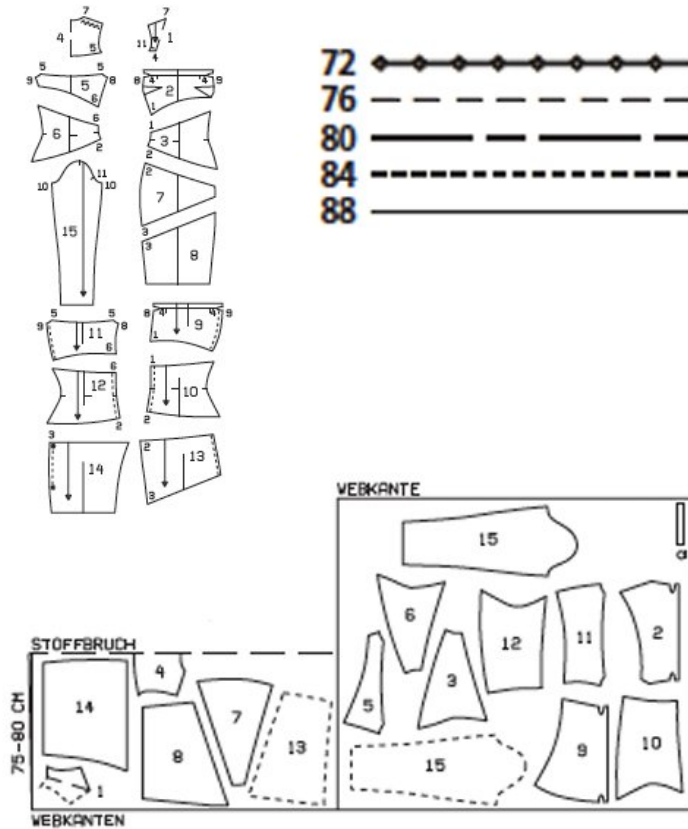
Trace the pattern pieces from the pattern sheet following the lines and markings for the correct size.

burda style magazine pattern do not have seam allowance included.

Seam and hem allowances to be added: Seams and edges 1.5 cm (5/8 in), hem and sleeve hems 4 cm (1 5/8 ins).

Step 2 — Cutting out

Pattern pieces 1 - 15



Fabric width 150-160cm

webbkanten = selvage
stoffbruch = fabric fold

- 1 front yoke, on a fold 2x
- 2 upper front 1x
- 3 lower front 1x
- 4 upper back, on a fold 1x
- 5 middle back 1x
- 6 lower back 1x
- 7 upper skirt panel 2x
- 8 lower skirt panel 2x
- 9 draping piece for upper front 1x
- 10 draping piece for lower front 1x
- 11 draping piece for middle back 1x
- 12 draping piece for lower back 1x
- 13 draping piece
for upper skirt panel 2x
- 14 draping piece
for lower skirt panel 2x
- 15 sleeve 2x

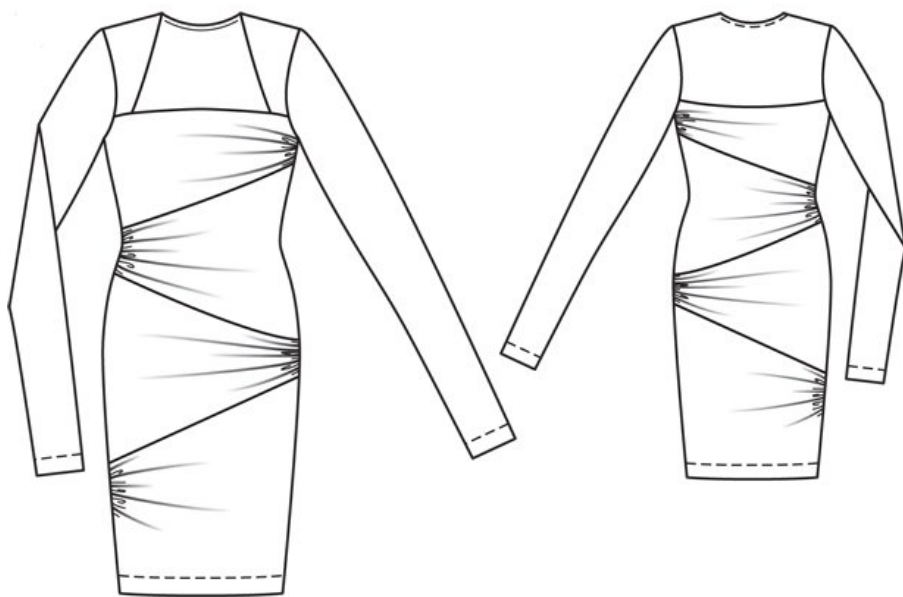
Also draft and cut the following piece, not included in the pattern sheet:

a) facing strip for back neck edge, 19, 19, 20, 20, 21 cm (7 1/2, 7 1/2, 8, 8, 8 3/8 ins) long, 4 cm (1 5/8 ins) wide (incl. allowances).

Important: The paper pattern pieces for the asymmetric skirt panels 7 and 8 and the corresponding draping pieces 13 and 14 are for the front pieces. These paper pattern pieces must be turned over (i.e. face down) to cut the back pieces. Cutting from a double layer of fabric, will automatically give you both pieces.

Vilene Bias Tape/stay tape: Iron to wrong side of armhole edges and back neck edge. Iron the Bias Tape/stay tape to the neck edge of the front yoke and upper front so that the line of chain stitch lies on the inside half of the yoke, next to the marked fabric fold line, and on the facing of upper front, next to the facing fold line. If you are working with a delicate fabric such as for view A, also interface the outer yoke halves with Vilene/Pellon.

Step 3 — Sewing



Note: Stitch seams on stretch fabrics with a special stretch stitch or at a narrow zigzag setting. Stitch hems with a twin sewing machine needle to keep them elastic.

Stitch bust darts. Press darts up.

On draping piece for upper front, gather left side edge to 5.5 cm (2 1/4 ins). Lay draping piece on upper front, with wrong side facing right side. On side and lower edges, stitch seam allowances together, next to seam line. On upper edge, stitch self-facings together on inside edge and next to fold line.

On draping piece for lower front, gather right side edge to 8 cm (3 1/4 ins). Lay draping piece on lower front, with wrong side facing right side, and stitch seam allowances together next to seam line.

On draping piece for upper front skirt panel, gather left side edge to 6 cm (2 3/8 ins). On draping piece for lower front skirt panel, gather right side edge between asterisks to 8 cm (3 1/4 ins). Lay draping pieces on corresponding front skirt panel pieces and stitch seam allowances together.

Stitch upper front to lower front (seam number 1). Stitch upper front skirt panel to lower front skirt panel (seam number 3). Stitch front to front skirt panel (seam number 2). Press seam allowances open.

Fold front yokes on fabric fold lines, wrong side facing in, and press. Baste open yoke edges together. Stitch lower yoke edges to upper front edge, along facing fold line, from seam number 4 yokes point down. Stitch seam allowances of yoke joining seams to facing. Turn yokes up, turn facing down, and press. Baste side facing edges in place.

Gather back draping pieces and stitch to corresponding back pieces. Stitch upper back to middle back (seam number 5). Press seam allowances up. Stitch middle back to lower back (seam number 6). Press seam allowances open. Stitch back skirt panel pieces together (seam number 3). Stitch back to back skirt panel (seam number 2). Press seam allowances open.

Stitch side seams. Stitch shoulder seams allowances of back extend at neck edge Press shoulder seam allowances onto back.

Fold facing strip for back neck edge lengthwise, right side facing out, and press. Pin folded facing strip to back neck edge so that fold edge of strip lies on garment piece, 1 cm (3/8 in) past seam line. Stitch along seam line. Turn facing strip up and turn ends under. Turn facing strip to inside and press edge. Topstitch 7 mm (1/4 in) from back neck edge.

Stitch sleeve seams. Press sleeve hem allowances to inside. Work from right side of sleeves and use twin needle to stitch hems 3.5 cm (1 1/2 ins) from lower sleeve edges.

Set in sleeves.

Turn hem allowance to inside. Work from right side of dress and use twin needle to stitch the hem in place.

BurdaStyle

Ruched Sheath Dress 05/2012