

burda style magazine 02/2010 Long Sleeve Top

By: burda style magazine

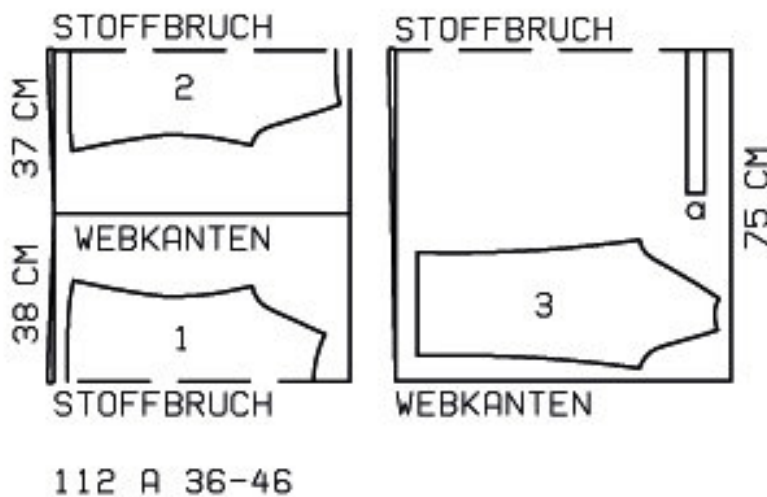
<http://www.burdastyle.com/projects/burda-style-magazine-022010-1>

Striped, Long Sleeve Top For more information on this and other burda style magazine patterns, please see this dedicated blog post.

Materials

Hoop-striped jersey

Step 1 — Preparation

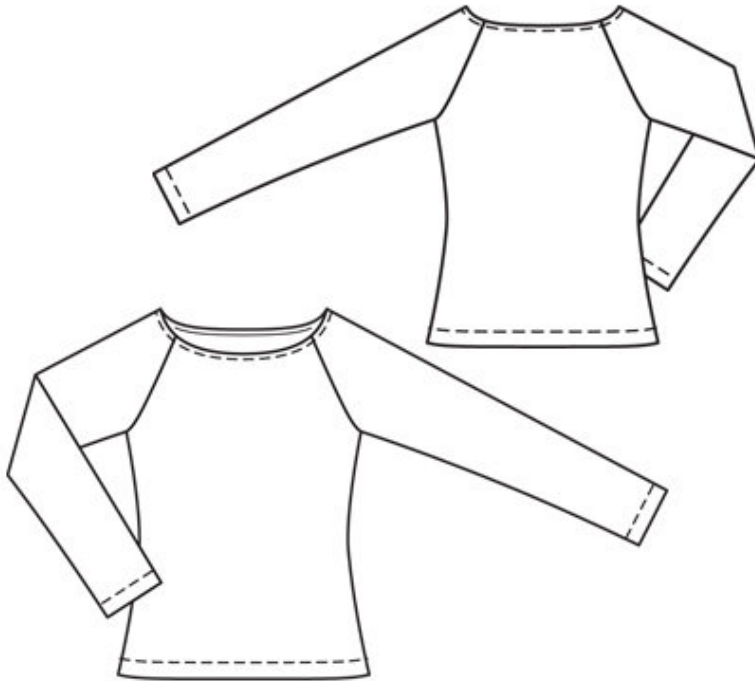


Trace the pattern pieces from the pattern sheet.

Seam and hem allowances:

Seams and edges 1.5 cm (5/8 in), hem and sleeve hems 3 cm (1 1/4 ins).

Step 2 — Cutting Out



1 front, on a fold 1x

2 back, on a fold 1x

3 sleeve 2x

a) facing strip for neckline, 65 — 67 — 68 — 69 — 71 — 72 cm (25³/₄ — 26¹/₂ — 26³/₄ — 27¹/₄ — 28 — 28¹/₂ ins) long, 4 cm (1⁵/₈ ins) wide (incl. allowance).

Vilene Bias Tape: Iron onto edges of neckline and armholes.

Step 3 — Note

Stitch seams on stretch fabrics with a special stretch stitch or at a narrow zigzag setting. Stitch hems with a twin machine needle to keep them elastic.

Step 4 — Seams

Stitch side seams and sleeve seams. Neaten seam allowances together and press to one side.

Step 5 — Sleeves

Stitch sleeves to edges of armholes.

Step 6 — Neckline

Fold facing strip for neckline lengthwise, right side facing out, and press. Pin doubled facing strip to edge of neckline so that fold edge of strip lies on garment piece, 1 cm (3/8 in) past seam line. Turn in end of facing strip which lies beneath. Stitch along edge of neckline. Trim seam allowances. Turn facing to inside and press edge. Use the twin needle to topstitch neckline 7 mm (1/4 in) wide.

Step 7 — Hems

Lay hem allowances of shirt and sleeves to inside. Stitch hems from right side, 2.5 cm (1 in) wide, with the twin machine needle.

BurdaStyle

burda style magazine 02/2010 Long Sleeve Top