

Long-sleeve maxi dress 03/2010

By: burda style magazine

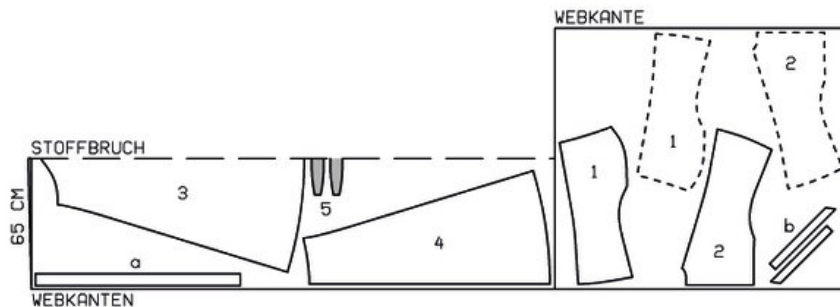
<http://www.burdastyle.com/projects/long-sleeve-maxi-dress-032010>

Long-sleeve Maxi Dress.

Materials

Chiffon

Step 1 — Preparation



110 36-44

Trace the pattern pieces from the pattern sheet. Follow lines and details for style 110. Lengthen pieces 3 and 4 as indicated.

To cut the lining, trace pieces 1 and 2 as separate pattern pieces, each to the marked lining line.

Seam and hem allowances:

Seams, edges and hem 1.5 cm (5/8 in).

Step 2 — Cutting Out



Print chiffon:

- 1 front with attached sleeve 2x
- 2 back with attached sleeve 2x
- 3 front skirt panel, on a fold 1x
- 4 back skirt panel 2x
- 5 belt piece, on a fold 2x

a) 2 tie bands, 100 — 100 — 105 — 105 — 110 cm (39 1/2 — 39 1/2 — 41 1/2 — 41 1/2 — 43 1/2 ins) long, 6 cm (2 1/2 ins) wide, finished width 3 cm (1 1/4 ins),

b) bias binding strip for neck, a total of 73 — 75 — 76 — 78 — 79 cm (28 3/4 — 29 3/4 — 30 — 30 3/4 — 31 1/4 ins) long, 4.5 cm (1 3/4 ins) wide (incl. allowance).

Plain chiffon for lining:

- 1 front 2x
- 2 back, on a fold 1x
- 3 front skirt panel, on a fold 1x
- 4 back skirt panel, on a fold 1x

Interfacing: See pattern layout.

Step 3 — Centre Back Seam, Shoulder Seams, Sleeve Seams

Stitch centre back seam on back pieces. Trim seam allowances to 7 mm (1/4 in) wide, neaten together, and press to one side. Stitch shoulder seams and top sleeve seams as continuous seams. Trim seam allowances, neaten together, and press onto back. Stitch underneath sleeve seams, beginning and ending exactly at corner (seam number 2). Trim seam allowances, neaten about 10 cm (4 ins) long along underarm curve, and press open. Neaten remaining seam allowances together and press onto back.

Step 4 — Lining

Stitch shoulder seams on lining pieces. Press allowance on side edges (armholes) of lining pieces to wrong side of fabric, turn in, and stitch. Lay lining pieces on pieces of outer fabric, with right side facing wrong side. Baste to neck edge, next to seam allowance, and to lower edges.

Step 5 — Binding Strip

Trim away seam allowance at neck edge. Fold binding strip in half lengthwise and press, right fabric side facing out. Work from inside to pin doubled binding strip to neck edge and stitch 7 mm (1/4 in) from edge. Lay binding over edge and baste over joining seam. Edgestitch binding in place.

Step 6 — Gathering lower edges of fronts

Gather lower edge of each front, between asterisks, to a width of 6.5 cm (23/8 ins).

Step 7 — Skirt Lining, Basting Upper Edges, Stitching Skirt to Bodice

Stitch centre back seam and side seams on skirt. Stitch side seams of skirt lining pieces. Lay skirt lining on skirt, with right side facing wrong side. Baste upper edges together. Fold allowance at top point of skirt front down horizontally and press. Stitch skirt to dress bodice. Press seam allowances down.

Step 8 — Neatening hem edges of dress, lining and sleeves

Neaten hem edges of dress, lining and sleeves with closely spaced zigzag stitching as follows: Press allowance to wrong side of fabric. Working from right side, stitch short, -closely spaced zigzag stitching along fold edge. Carefully trim allowance close to stitching.

Step 9 — Belt and Belt Loops

Press seam allowances at ends of one belt piece (underside) to wrong side. Lay belt pieces right sides facing. Stitch upper and lower edges together. Turn belt right side out and press edges. Fold tie bands lengthwise, right side facing in. Stitch along lengthwise edge and across one end of each. Trim seam allowances. Turn tie bands right side out and press. Stitch tie bands to ends of top side of belt. Lay seam allowances onto belt piece and press. Sew narrow edges of lower belt piece in place, by hand. Make thread loops, 4.5 cm (17/8 ins) long, over side seams of dress, as marked. For each loop, stretch 3— 4 threads, then cover them closely with buttonhole stitch, by hand.

Long-sleeve maxi dress 03/2010